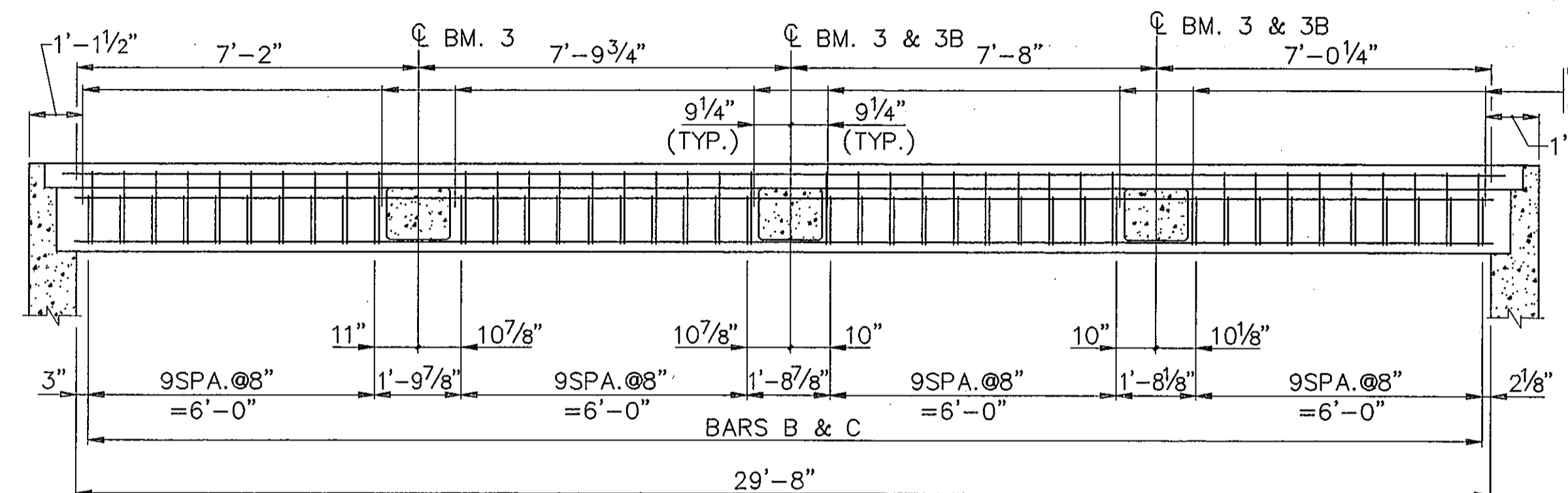
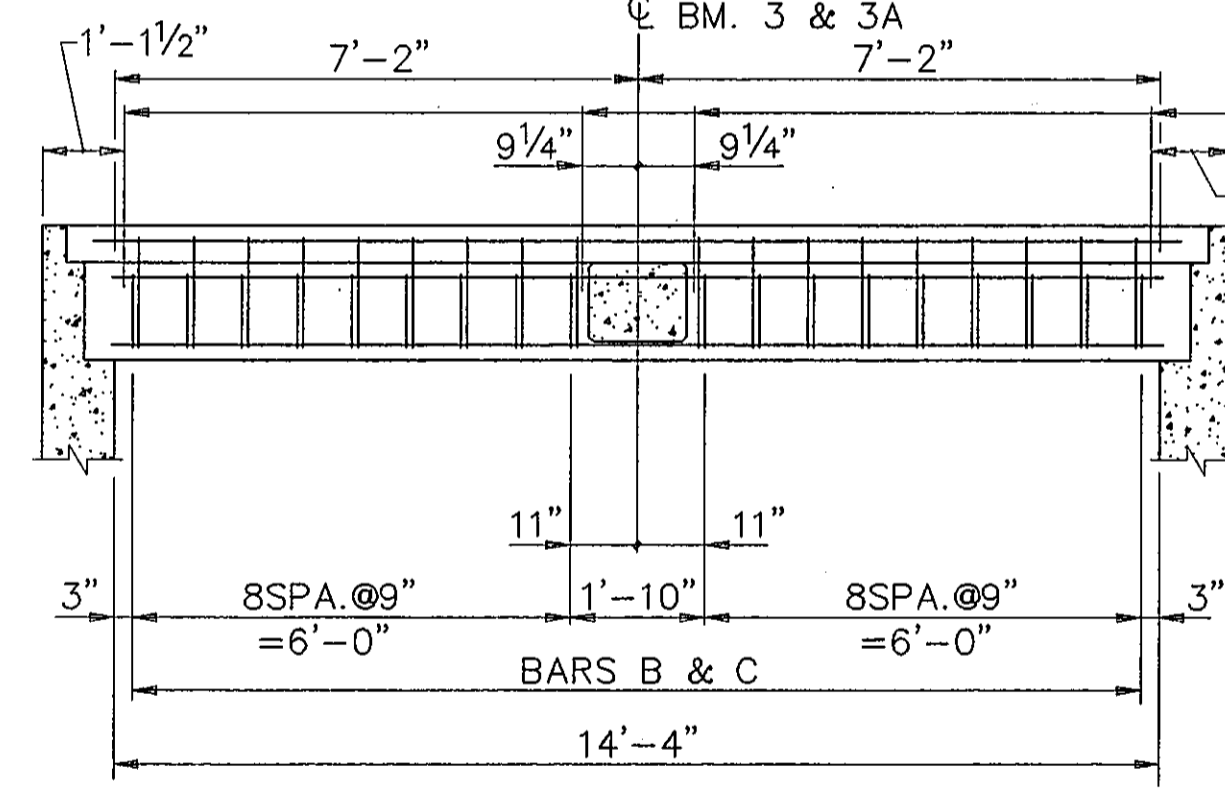


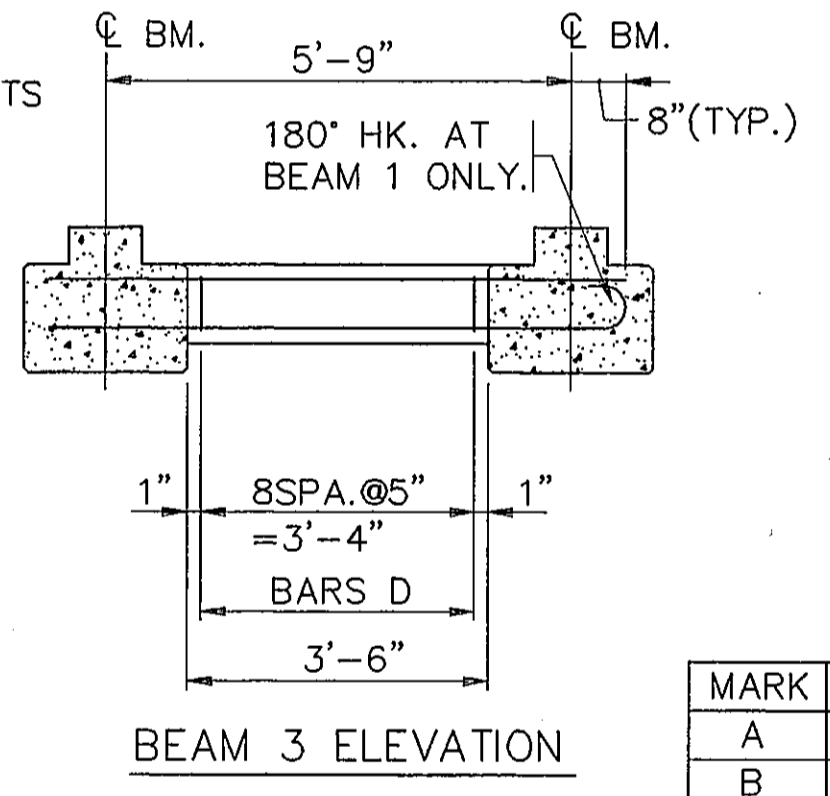
BEAM 1 ELEVATION



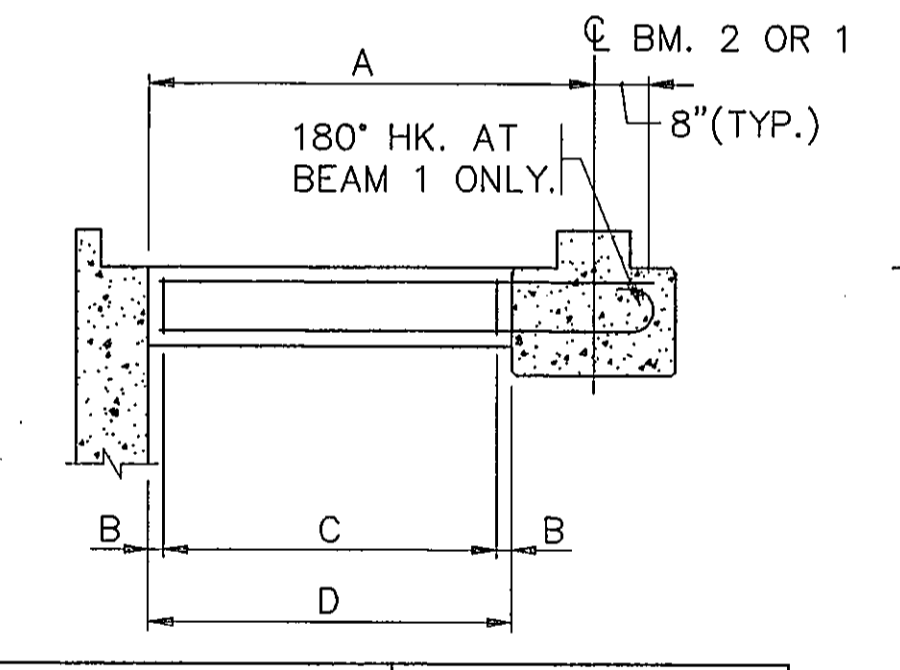
BEAM 1A ELEVATION



BEAM 2 ELEVATION



BEAM 3 ELEVATION

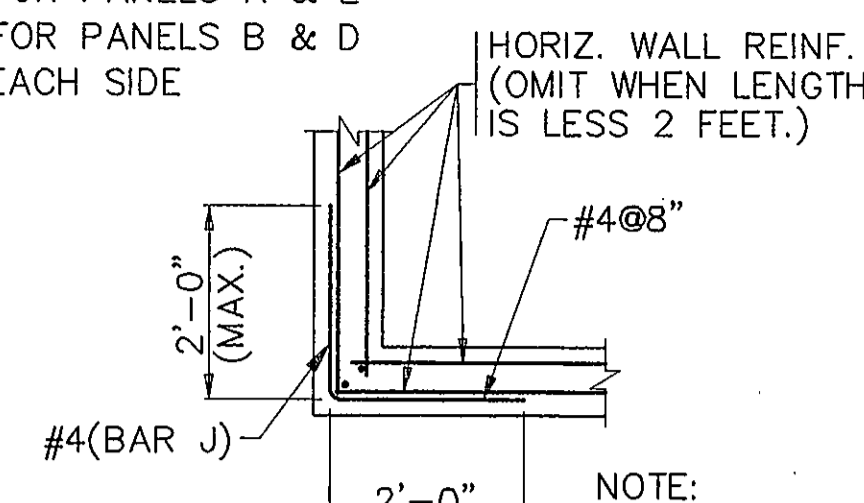


BEAM 3A & 3B ELEVATION

MARK	BEAM 3A	BEAM 3B
A	6'-1 1/2"	5'-3"
B	0"	2 1/4"
C	12SPA. @ 5" = 5'-0"	9SPA. @ 5" = 3'-9"
D	5'-0"	4'-1 1/2"

ANCHOR BOLTS

- ① LOCATION FOR PANELS A & E
- ② LOCATION FOR PANELS B & D
- ③ TYP. FOR EACH SIDE

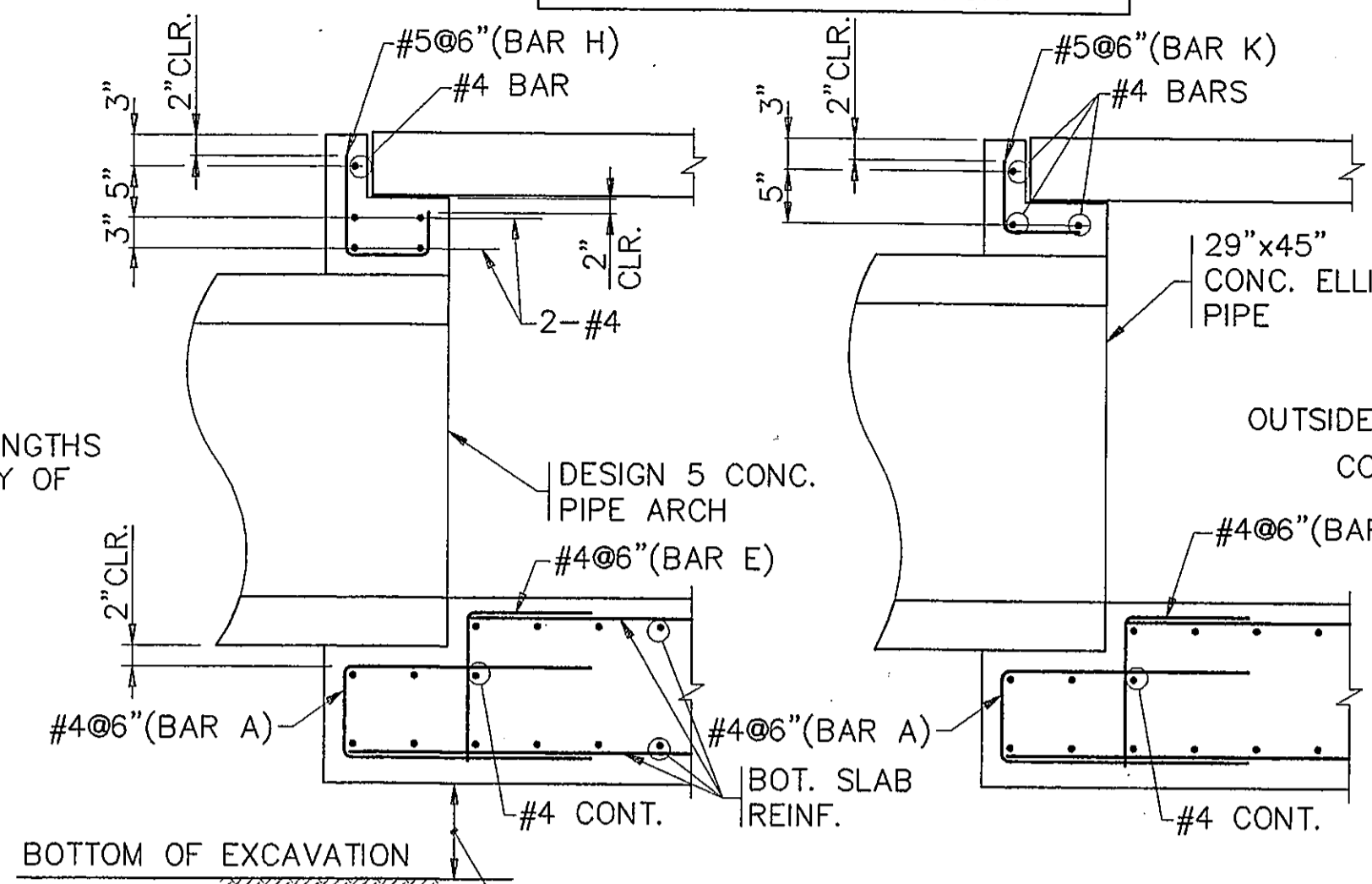


DETAIL B
(PLAN SECTION AT CORNER)

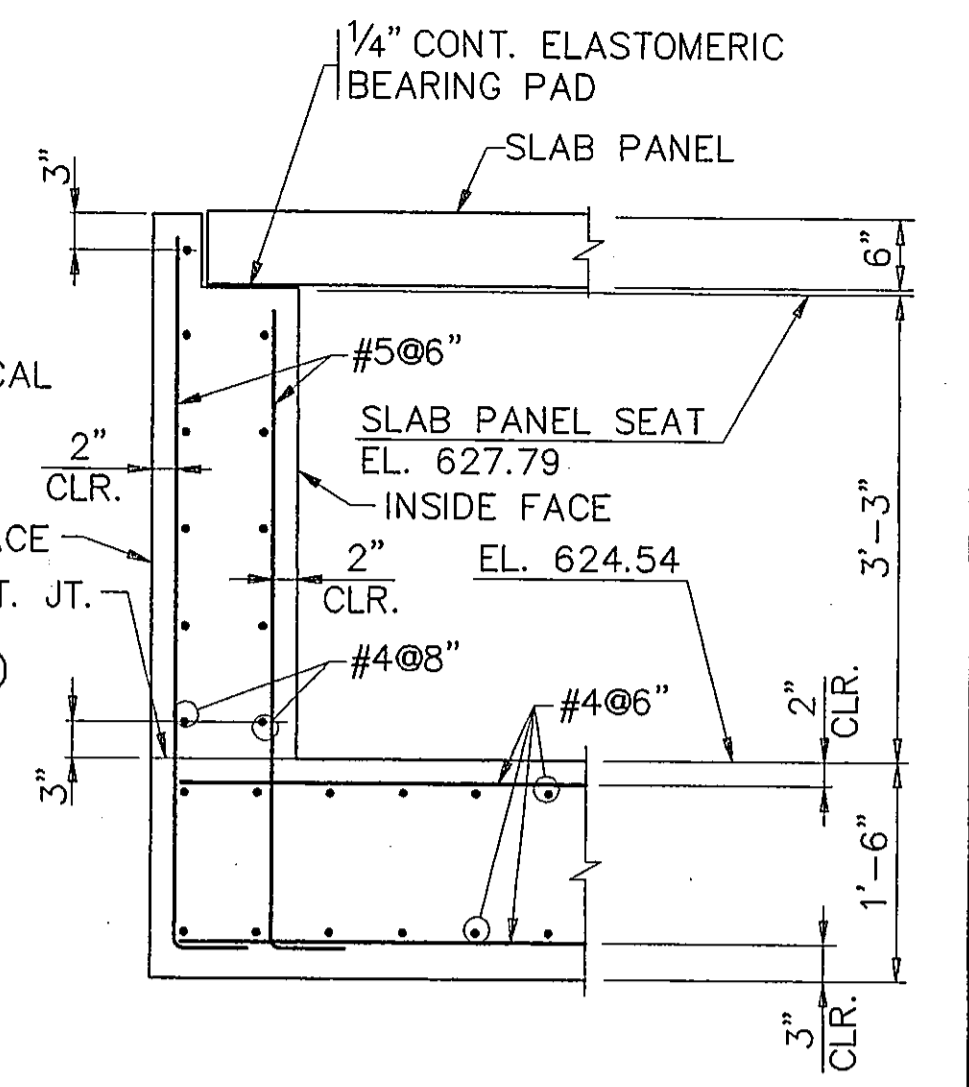
THE TYPE AND QUANTITY OF FOUNDATION CONDITIONING MATERIAL USED AND THE PLACEMENT OF THIS MATERIAL SHALL BE APPROVED BY THE ENGINEER PRIOR TO PLACEMENT. THE REMOVAL OF UNSUITABLE MATERIAL SHALL BE AS DIRECTED BY THE ENGINEER. THE LIMITS OF THE EXCAVATION SHALL BE AT LEAST THE LIMITS OF THE BOX.

NOTE: REGARDING ANCHOR BOLTS STIRRUPS MAY BE SHIFTED SLIGHTLY FOR ANCHOR BOLT PLACEMENT.

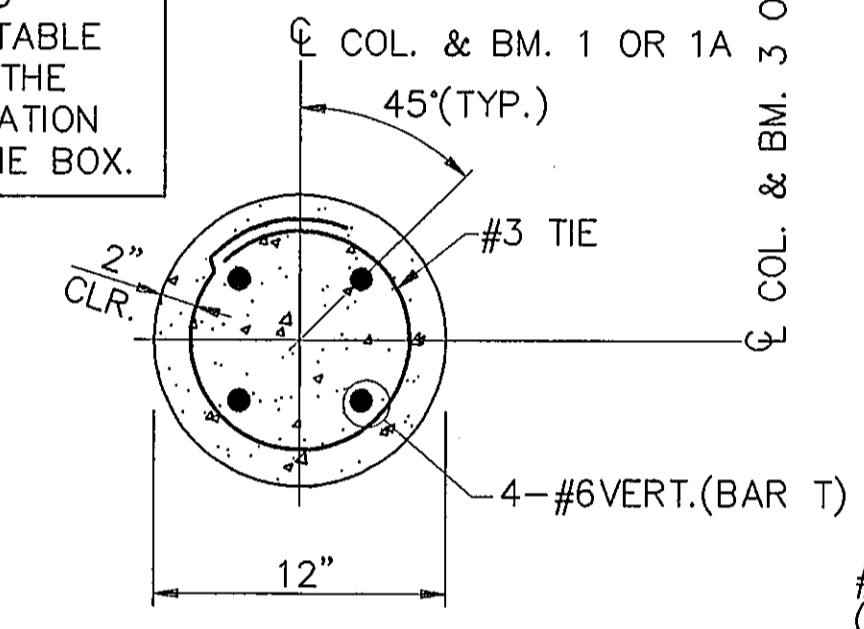
FOR INFORMATION NOT SHOWN SEE WALL & BOT. SLAB SECTION.



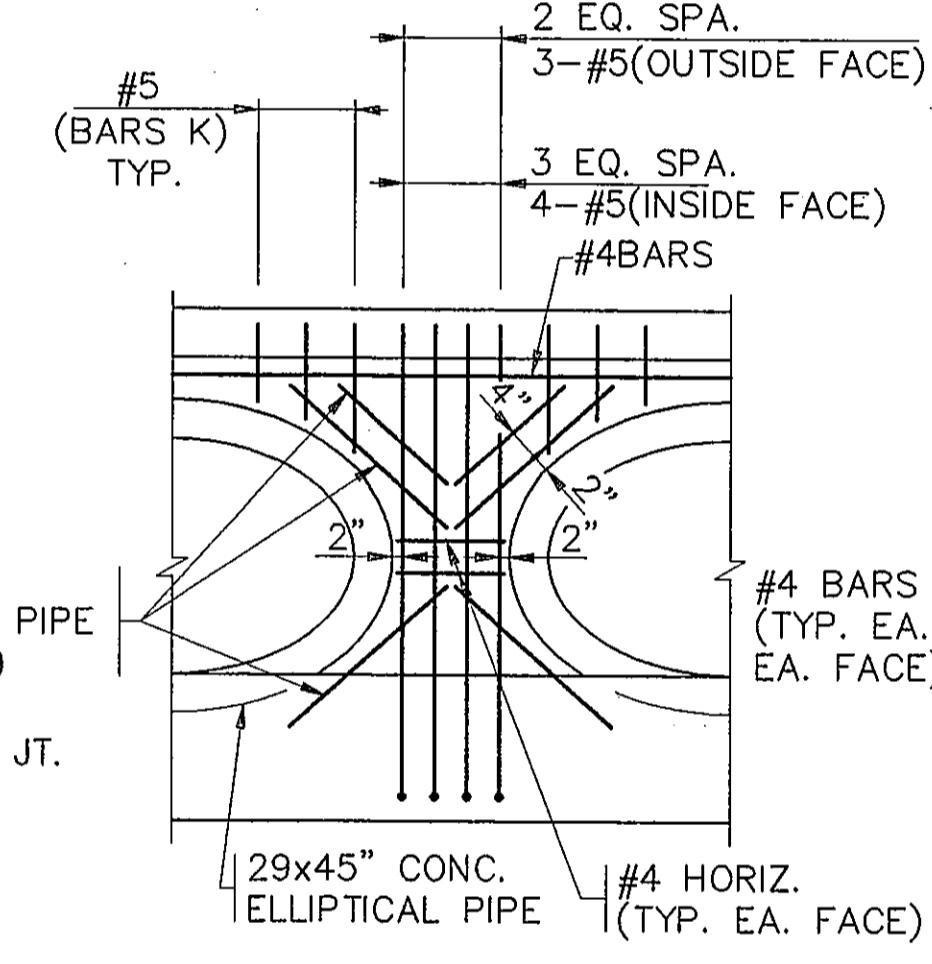
WALL SECTIONS AT PIPES



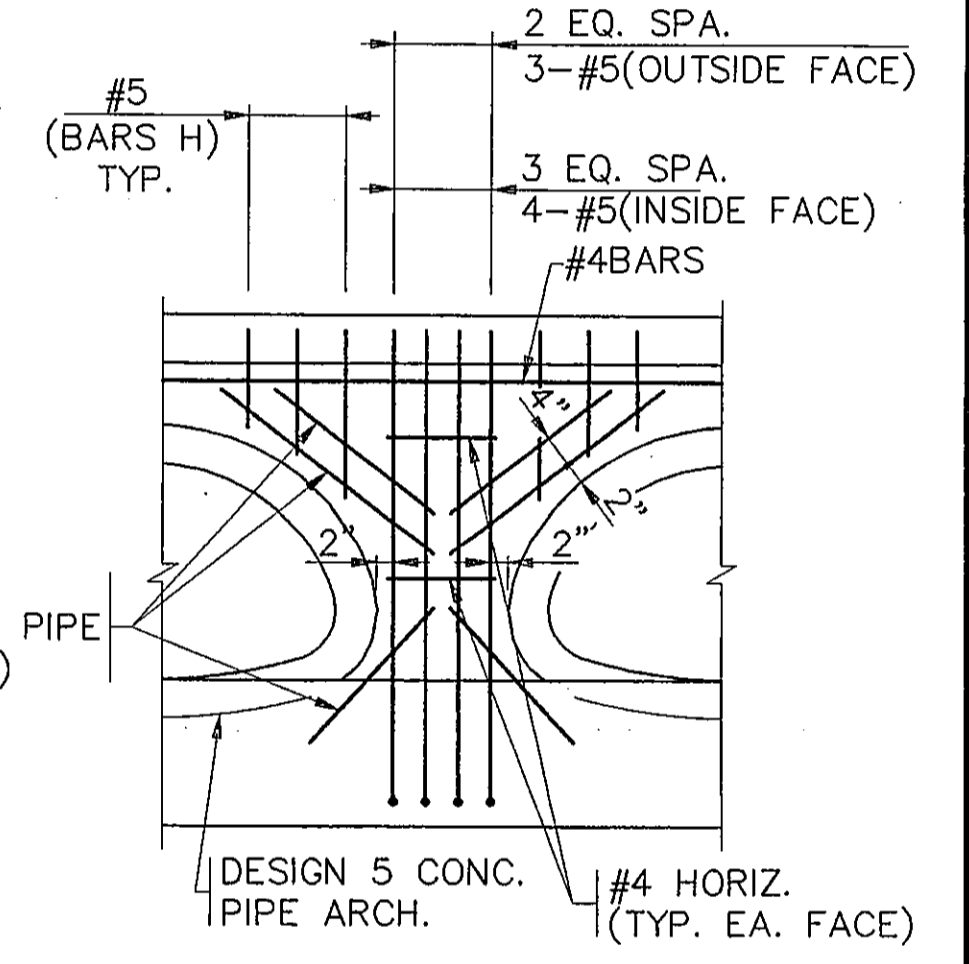
WALL & BOTTOM SLAB SECTION



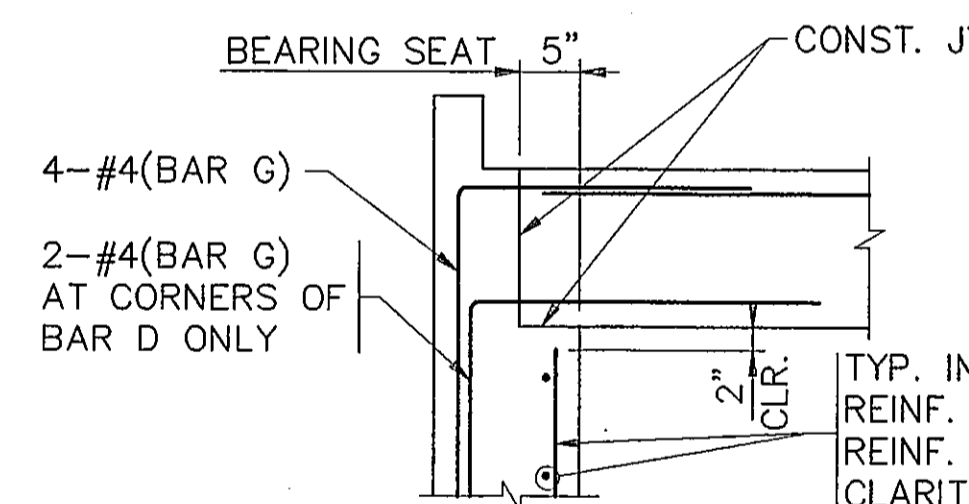
SECTION THRU COLUMN



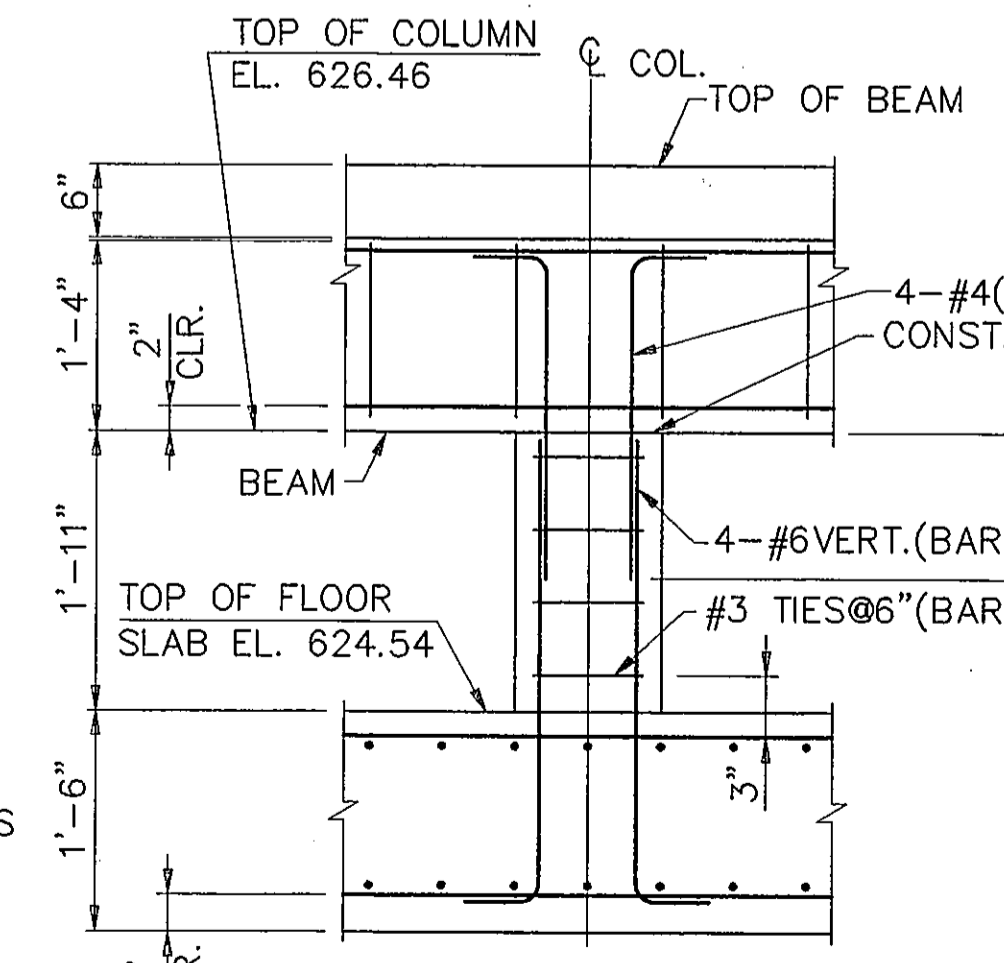
ADDITIONAL REINF. AROUND PIPES
SCALE: 1/2"=1'-0"



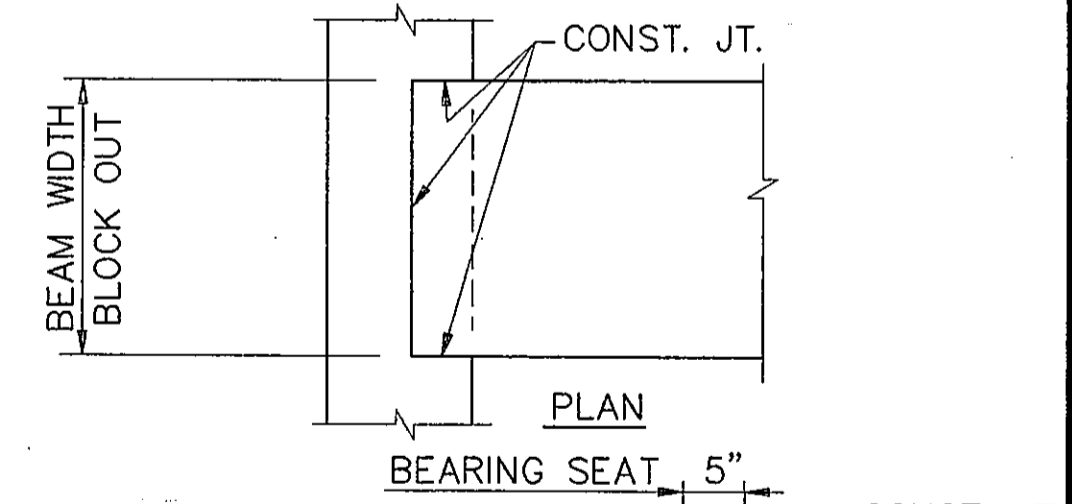
BLOCK OUT AT BEAMS 3A & 3B



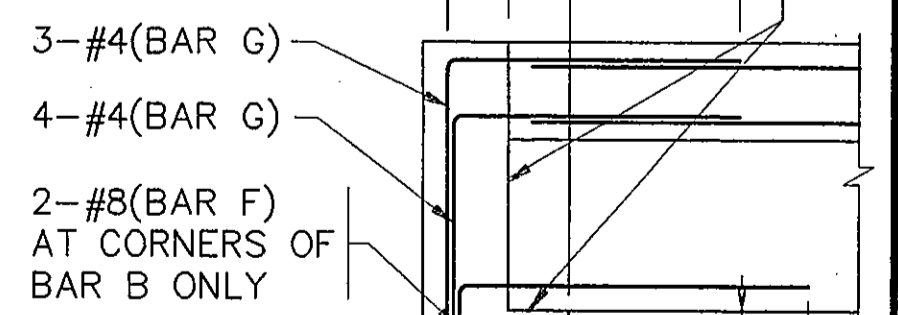
BEARING SEAT



COLUMN ELEVATION

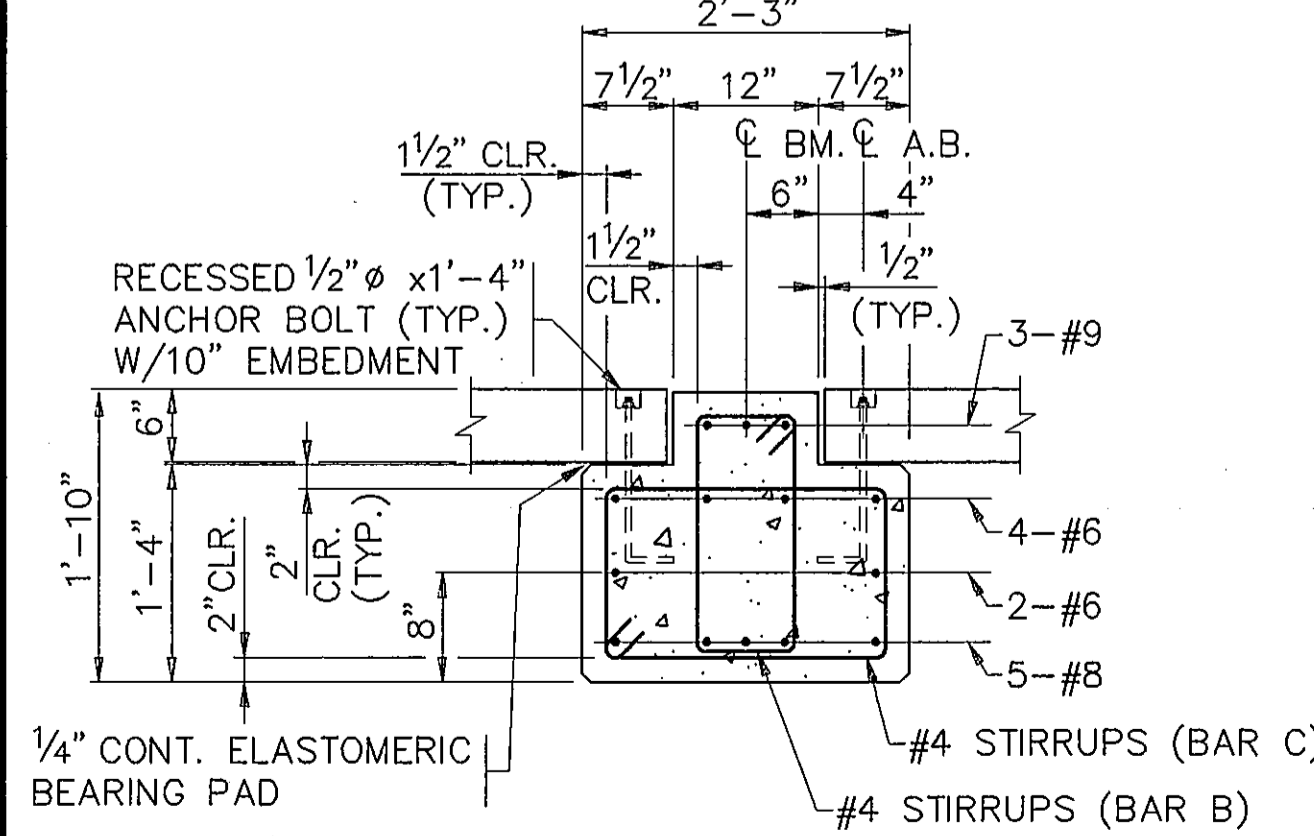


BEARING SEAT

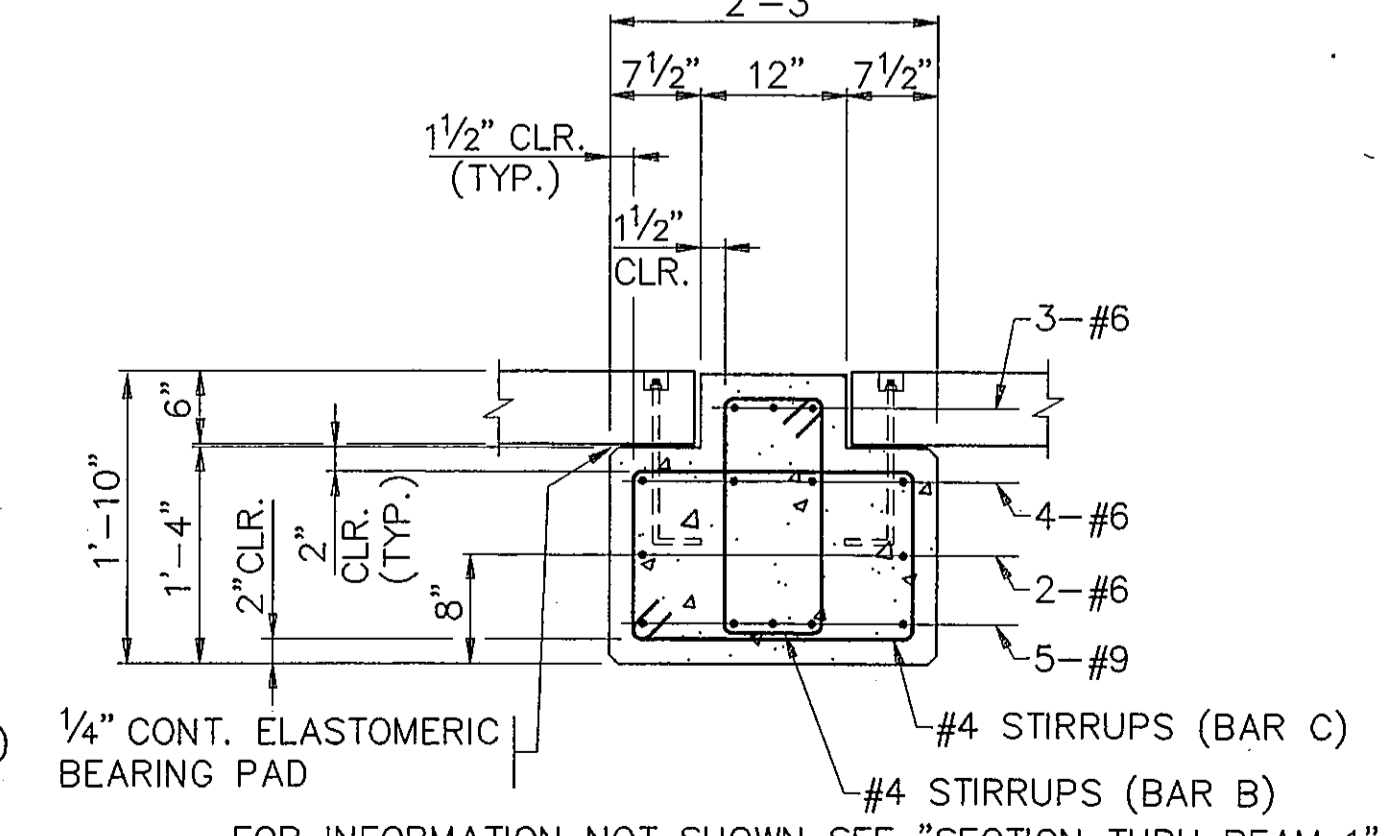


BLOCK OUT AT BEAM (TYP. BEAMS 1, 1A & 2)

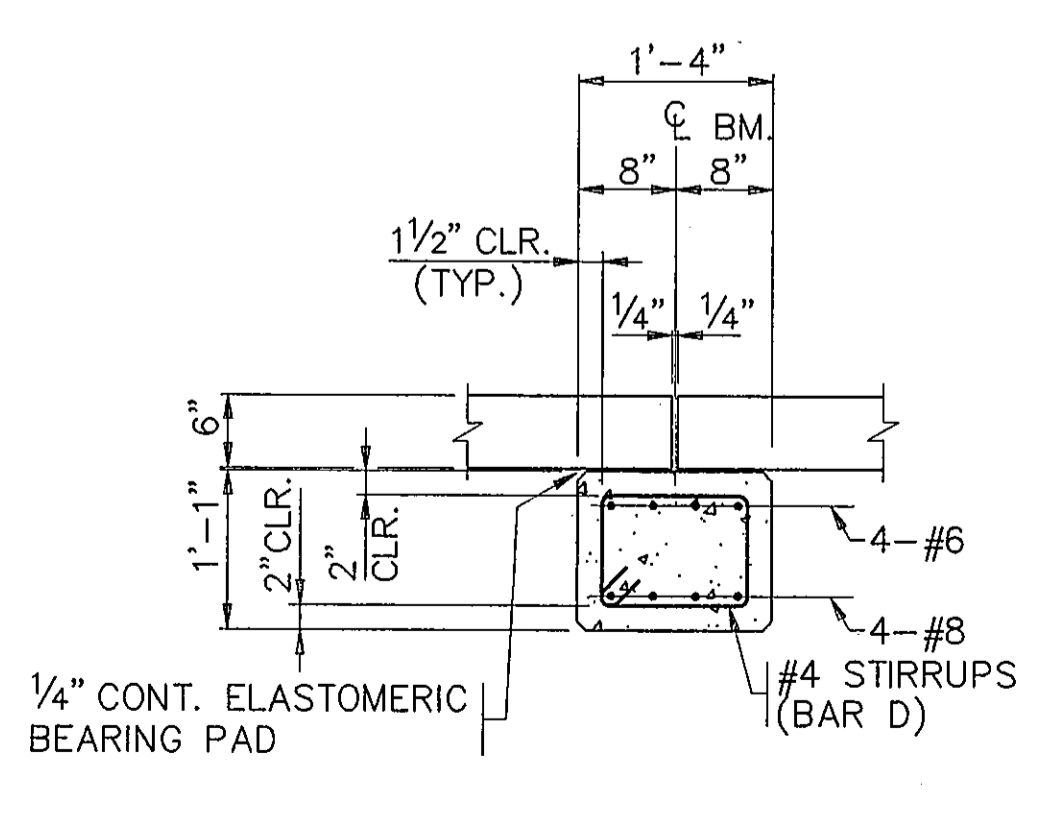
INVERT ALTERNATE STIRRUPS. ALL BEAMS.



SECTION THRU BEAM 1



SECTION THRU BEAM 2



SECTION THRU BEAM 3, 3A & 3B

AS BUILT
OCT 20 1995



THE SEAL APPEARING ON THIS DOCUMENT WAS AUTHORIZED BY TRACY L. TERRILL, P.E. 70974, IN MAY, 1994.

DESIGN: T.L.T.	A.I.P. NO. 3-48-0063-06	Date	Revisions	By
DRAWN: M.J.G.	BID NO. 94-33			
CHECKED: L.D.T.	JOB NO. Y8024.60			
SCALE: NOT TO SCALE				

Greiner, Inc.
Engineers, Architects and Planners



ADDISON AIRPORT

JUNCTION BOX DETAILS