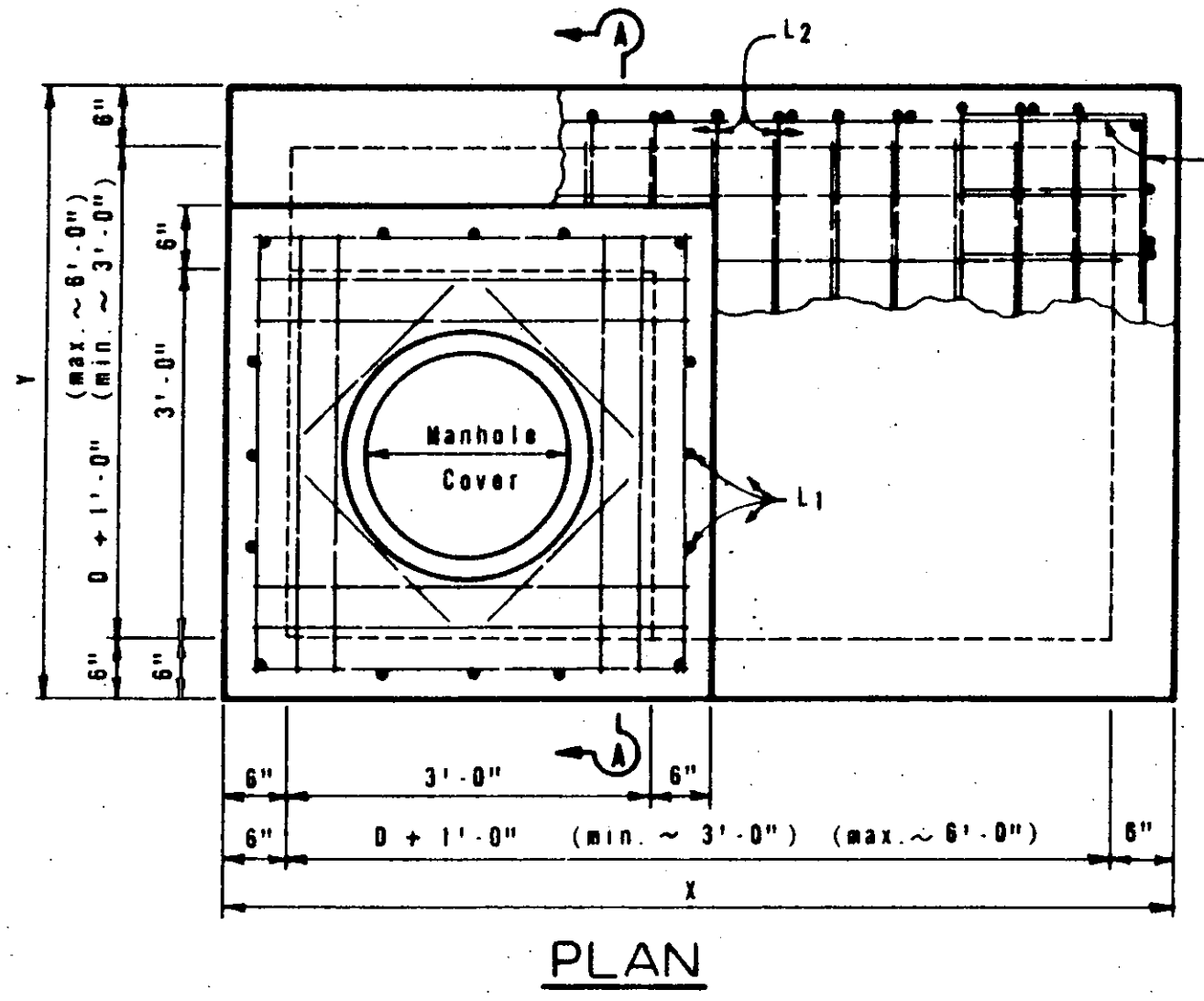
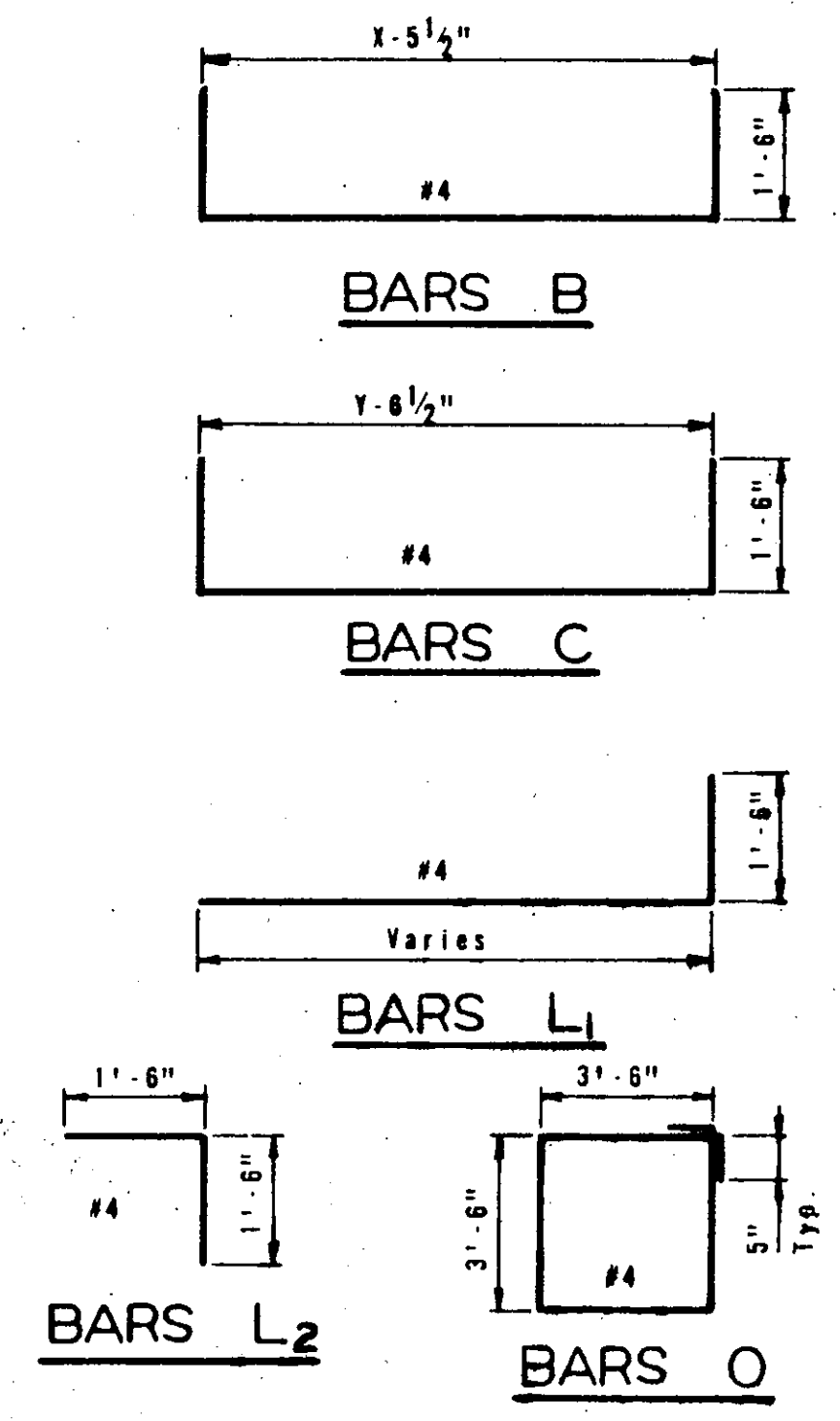


Note: Riser, either cast-in-place or concrete pipe, may be located in any corner.



PLAN



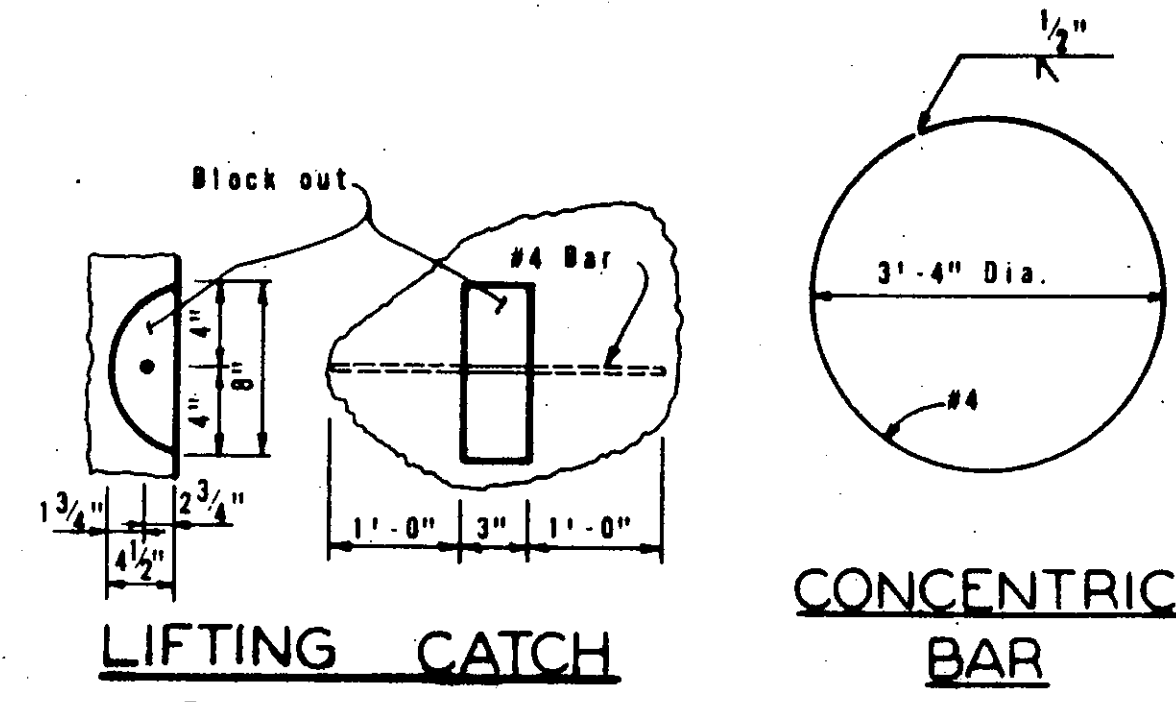
BARS B

BARS C

BARS L1

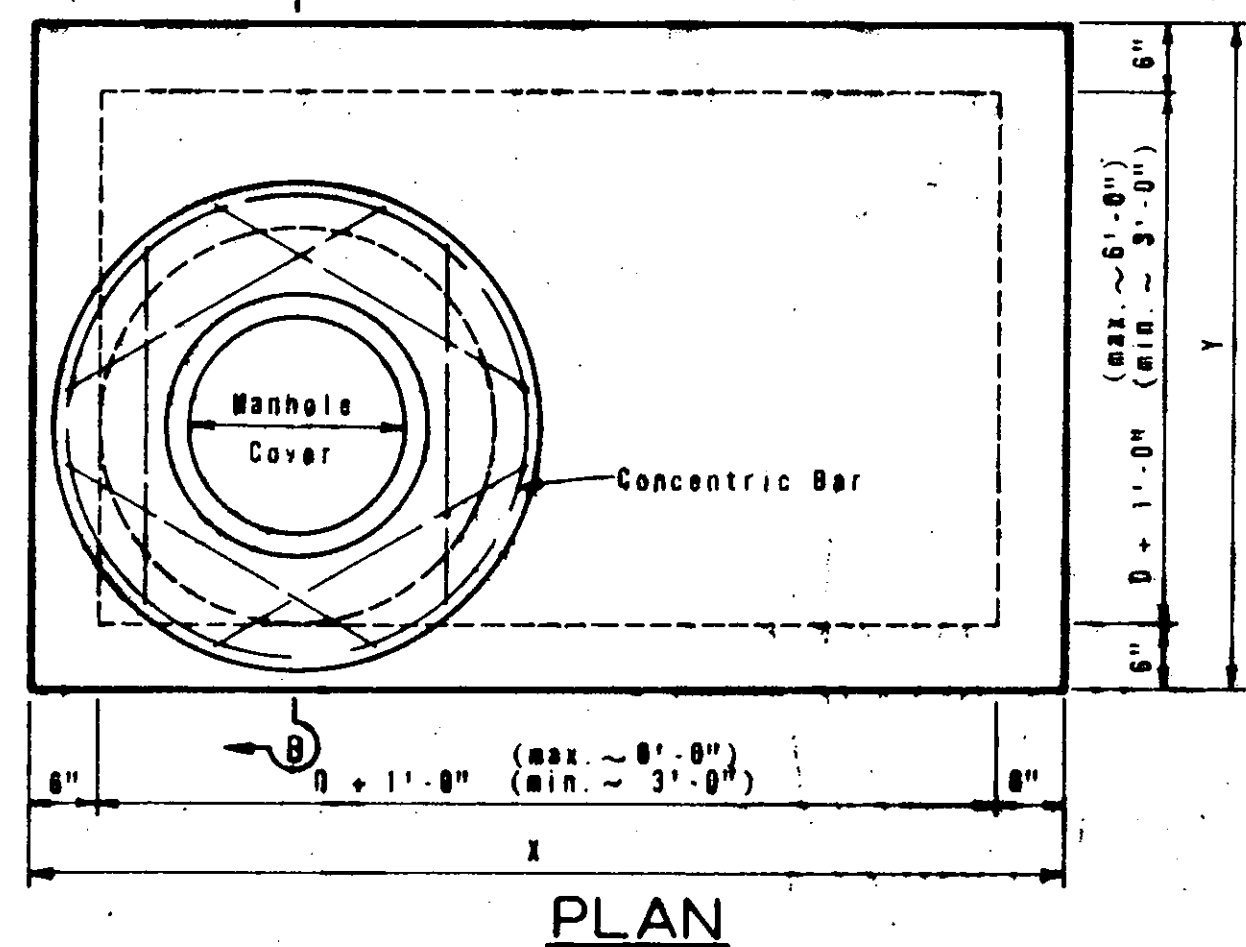
BARS L2

BARS O

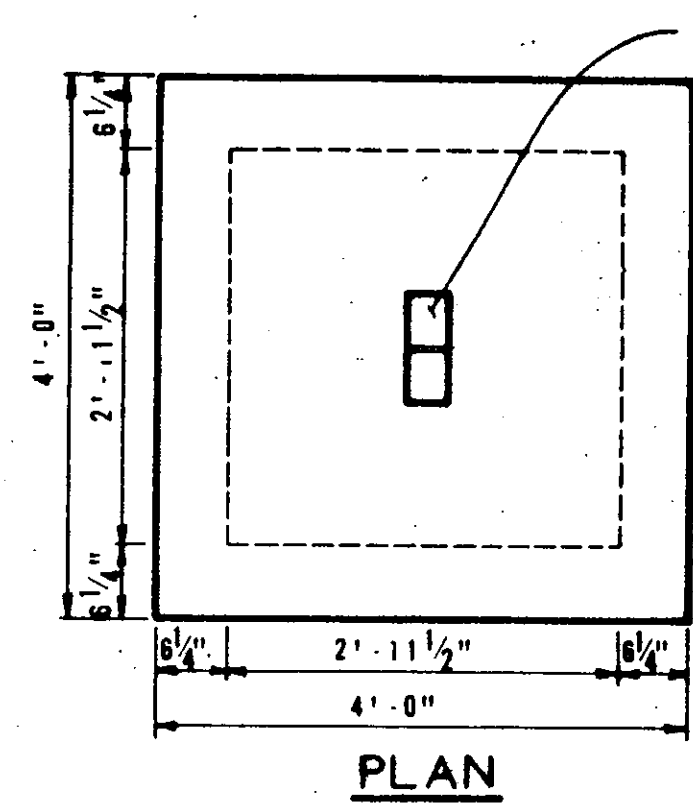


LIFTING CATCH

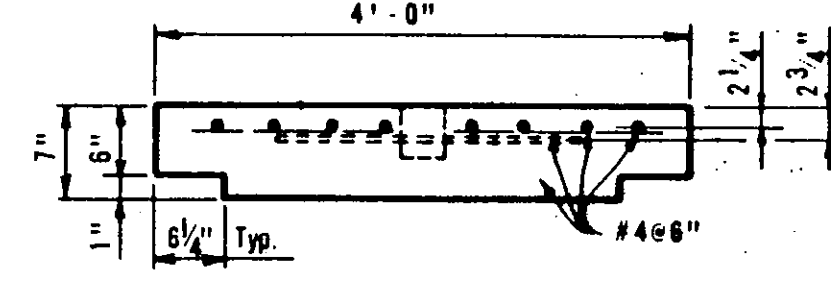
CONCENTRIC BAR



PLAN

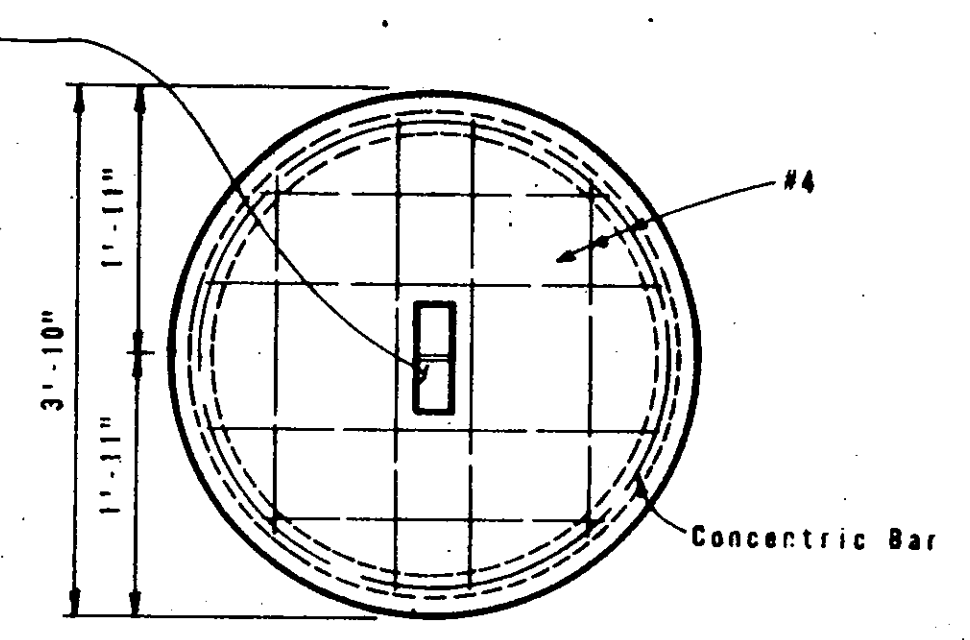


PLAN

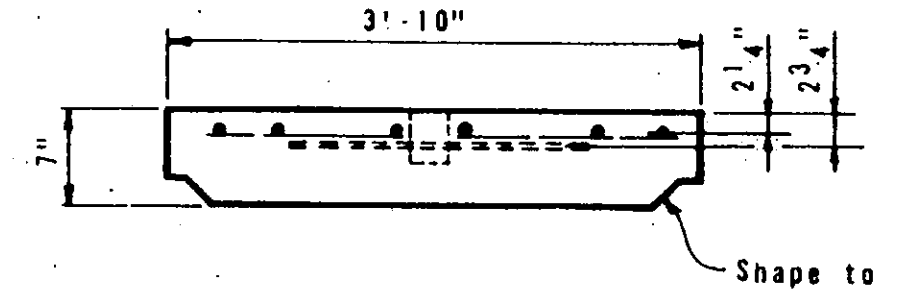


ELEVATION

CAST-IN-PLACE RISER COVER



PLAN



ELEVATION

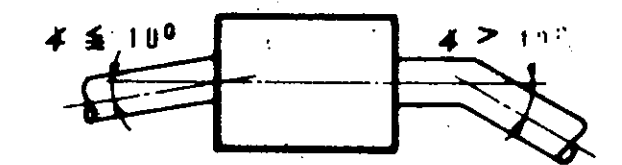
CONCRETE PIPE RISER COVER

OPTIONAL PRECAST CONCRETE LIFT-OFF COVERS

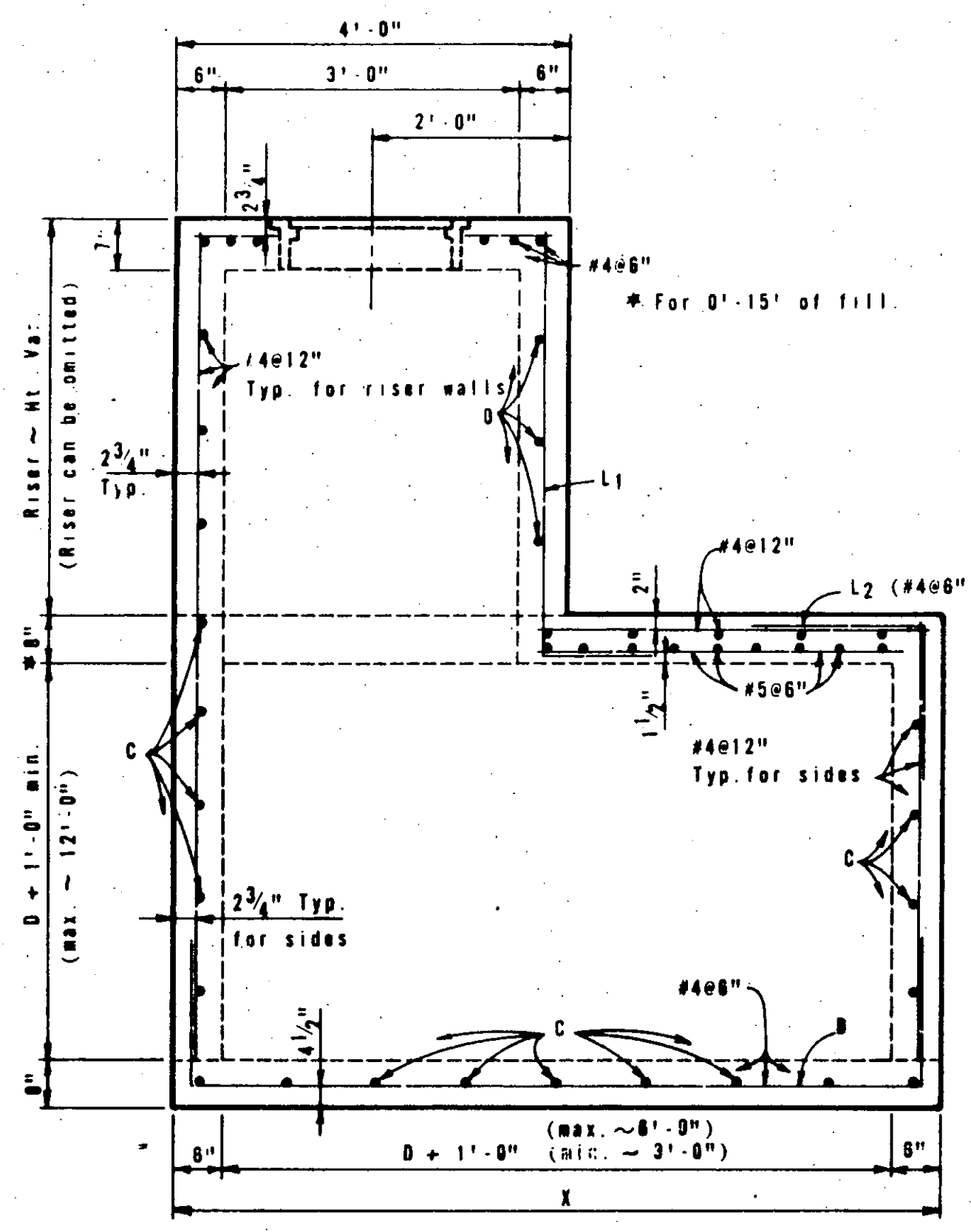


GENERAL NOTES

Unless otherwise shown in the plans, payment will be made for each Manhole of the Type M.  
Exposed edges shall be chamfered 3/4".  
Alternate design drawings bearing the seal of a registered professional engineer will be acceptable for precast construction of manholes.  
Shop drawings will not be required.  
The contractor may with the approval of the Engineer furnish manholes of equivalent structural design.  
In areas of conflict between reinforcing steel, block-outs, pipes, anchor bolts or other reinforcing steel, the reinforcement shall be bent or adjusted to clear as directed by the Engineer.  
The riser may be constructed of reinforced concrete as shown or of Reinforced Concrete Pipe, Class III, in accordance with ASTM Designation C-76 if pipe is used, joints shall conform to the Item "Reinforced Concrete Pipe Joints". Precast Concrete Lift Off Cover may be substituted for "Ring and Cover".  
Connecting pipes should enter within 15° of normal to inlet wall. If necessary, pipe above or curved approach segments should be used to stay within this limit.

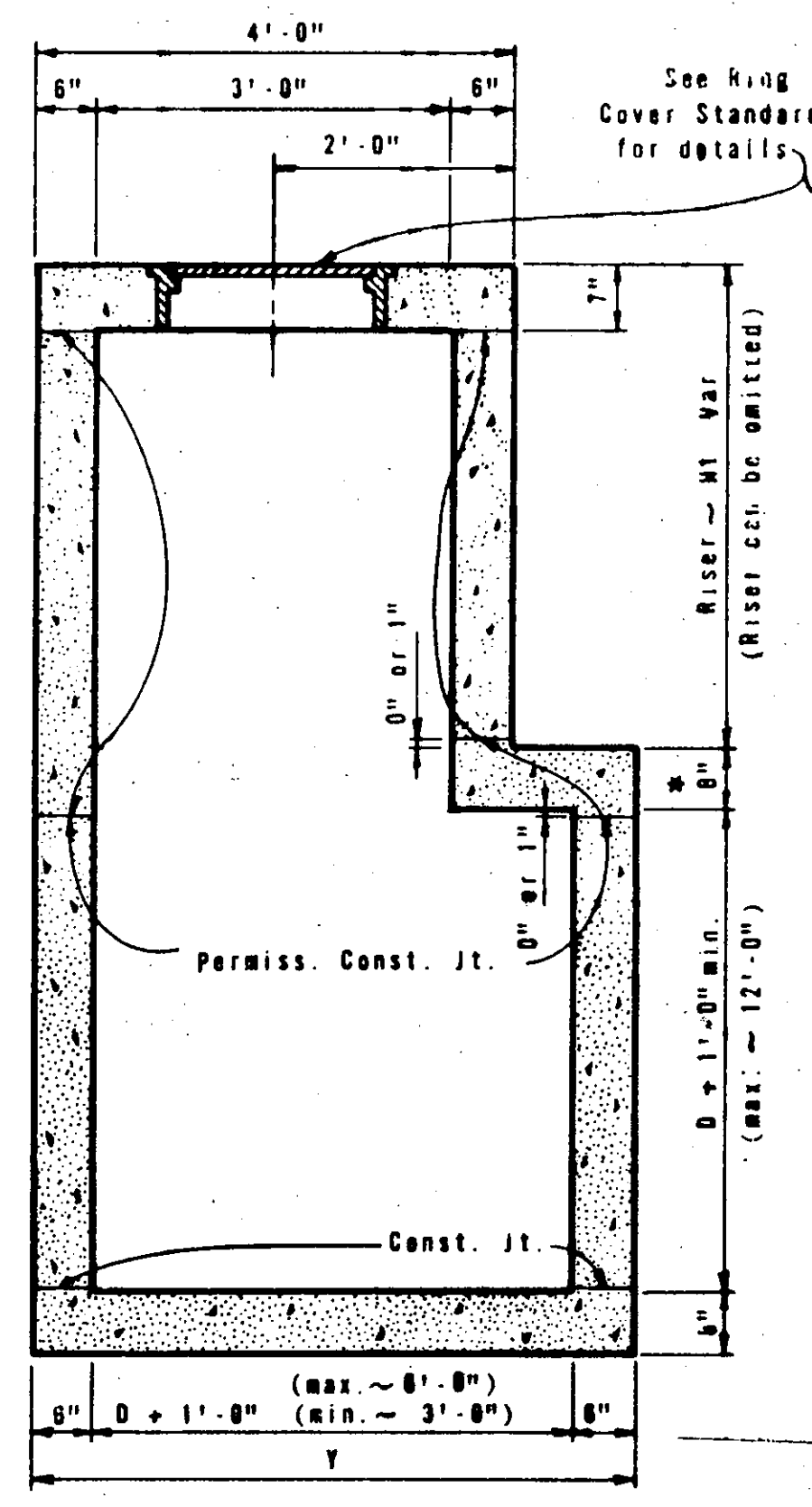


Pipes may enter any or all walls. The maximum size of pipe that can be accommodated is 60". More than one pipe may enter a side, subject to the maximum box dimensions shown. The clear distance between adjacent pipes should be 9" minimum.

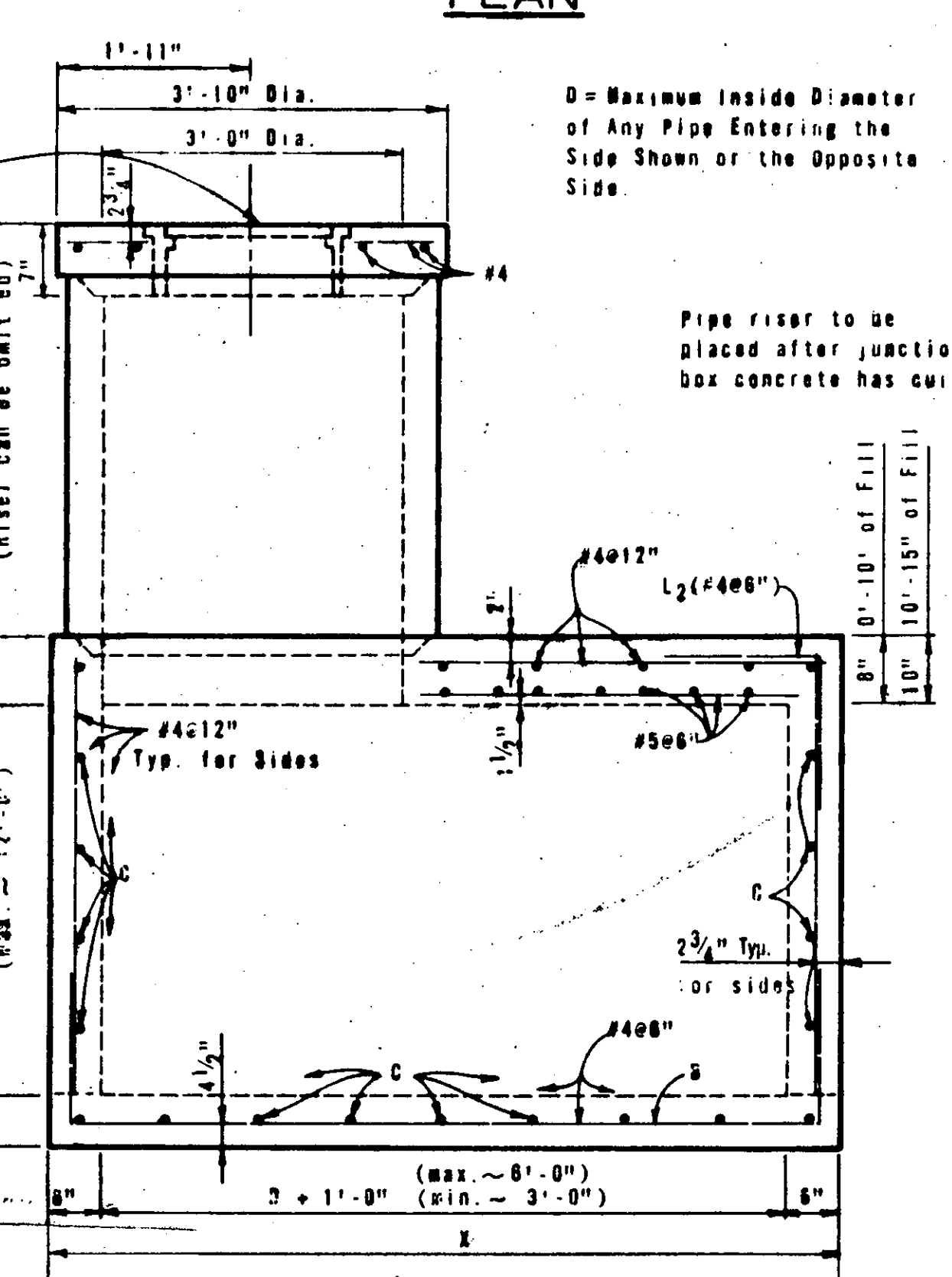


ELEVATION

MANHOLE WITH CAST-IN-PLACE RISER

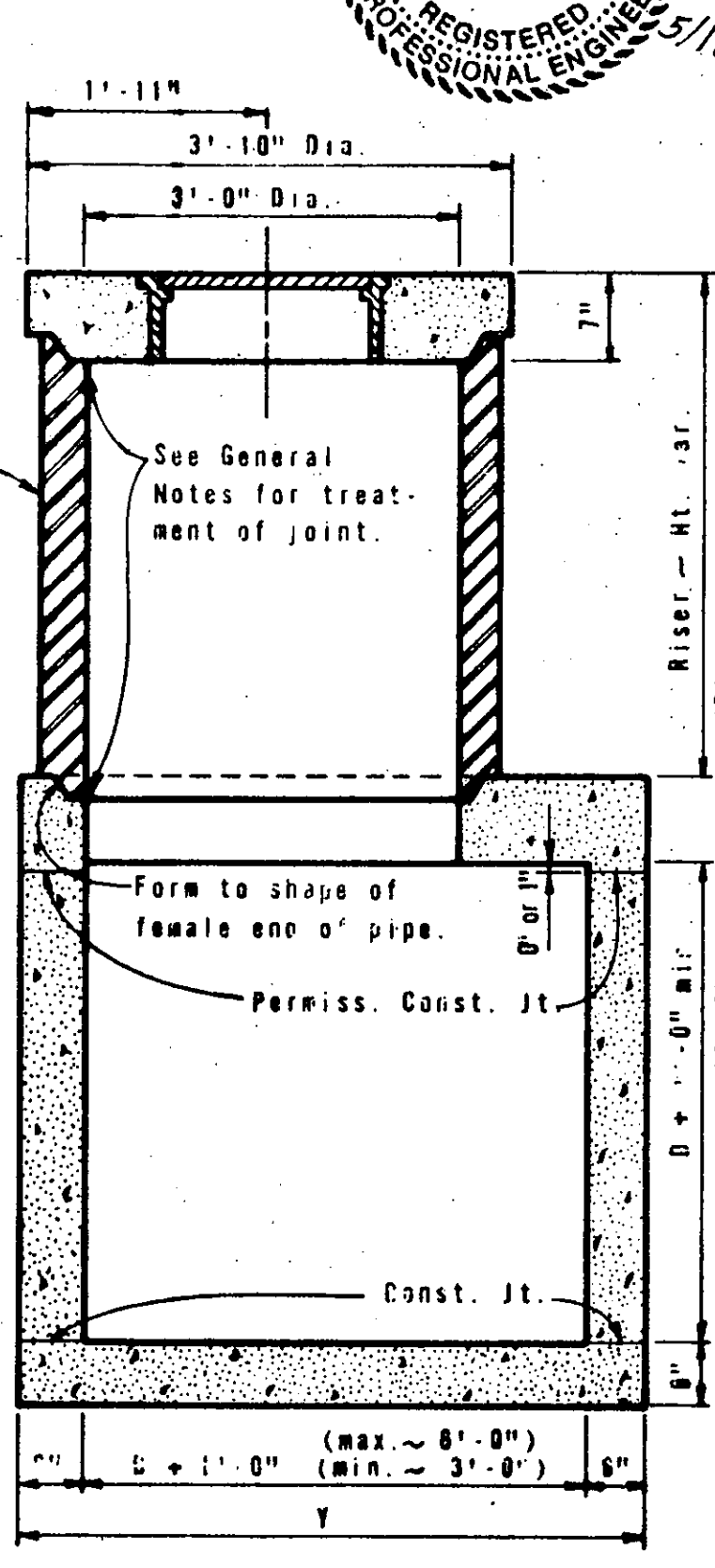


SECTION A-A



ELEVATION

OPTIONAL MANHOLE WITH PIPE RISER



SECTION B-B

AS BUILT OCT 20 1995

STATE DEPARTMENT OF HIGHWAYS AND PUBLIC TRANSPORTATION  
MANHOLE TYPE M  
(JUNCTION BOX WITH ACCESS)  
MH-M

ORIGINAL DRAWING DATE DEC. 1977	STATE	FEDERAL	FEDERAL AID PROJECT	SHEET
DR: ADC	TX	6		25
CR: THD	REV. 8-88 GEN. NOTES			
DR: MCB				
CR: THD				