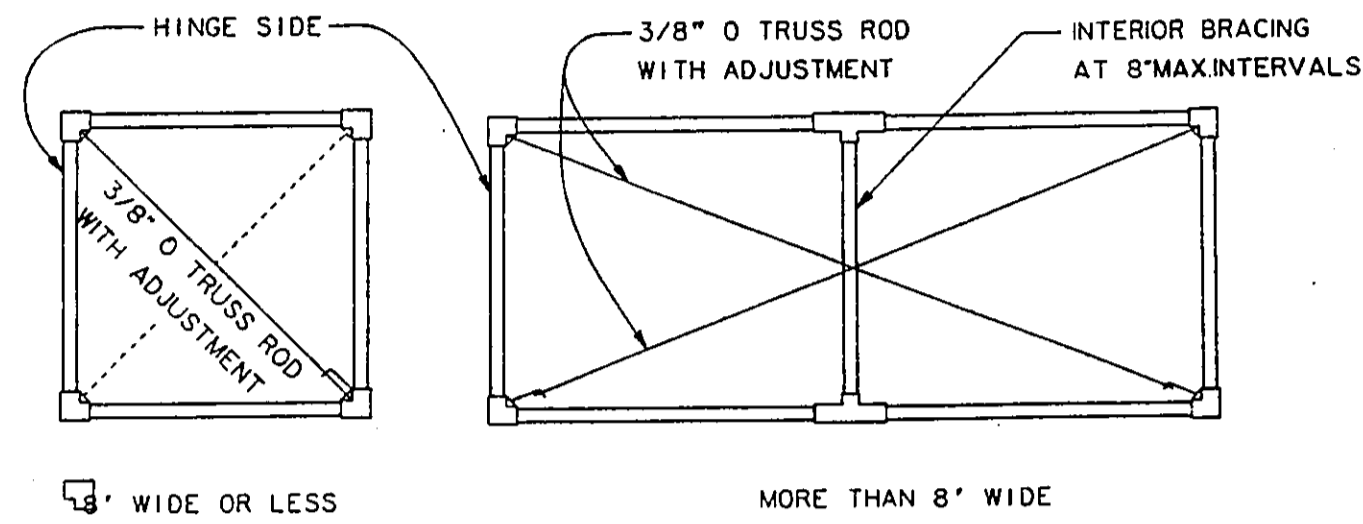


GATE FRAME DIMENSIONS & WEIGHTS (FED. SPEC. RR-F-191)					
DESCRIPTION	SECTION	STEEL FRAME		ALUMINUM FRAME #	
		OUTER DIMENSION (INCHES)	WEIGHT (LBS./FT.)	OUTER DIMENSION (INCHES)	WEIGHT
FABRIC HEIGHT 6' & LESS & LEAF WIDTH 8' OR LESS	○	1.66	2.27	1.90	0.94
	□	1.50	1.90	2.00	0.94
FABRIC HEIGHT OVER 6' & OR ALL LEAF WIDTHS OVER 8'	○	1.90	2.72	1.90	0.94
	□	2.00	2.60	2.00	0.94
INTERIOR BRACING	○	1.66	2.27	1.90	0.94
	□	1.50	1.90	2.00	0.94

\* SEE FAA SPEC. F-162 FOR DETAILS TO BE USED ONLY WITH ALUMINUM FENCE

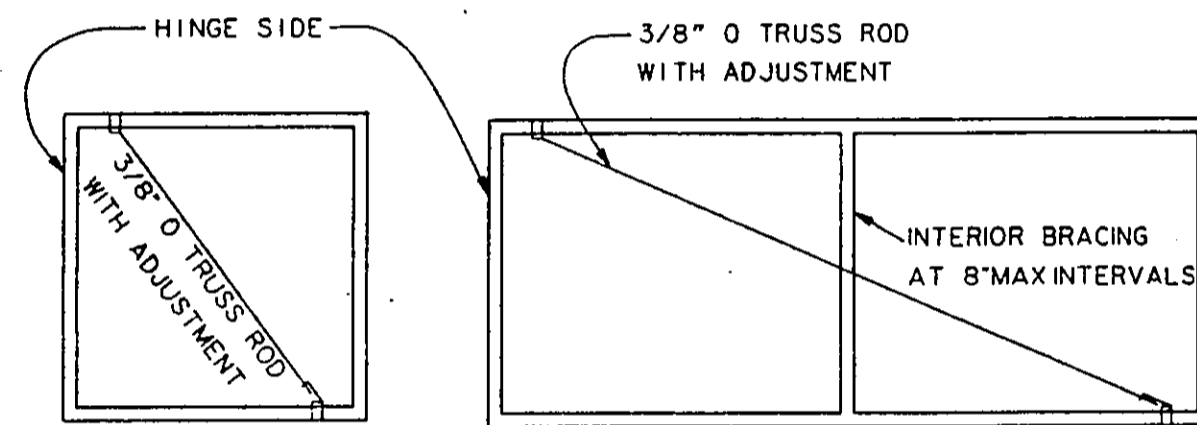
WHEN BARBED WIRE TOP IS SPECIFIED, THE GATE FRAME END MEMBERS SHALL BE EXTENDED 12" MINIMUM ABOVE TOP HORIZONTAL MEMBER TO ATTACH THREE UNIFORMLY SPACED WIRES. SPACE ADDITIONAL SUPPORTS AT 8" MAXIMUM.



8' WIDE OR LESS

MORE THAN 8' WIDE

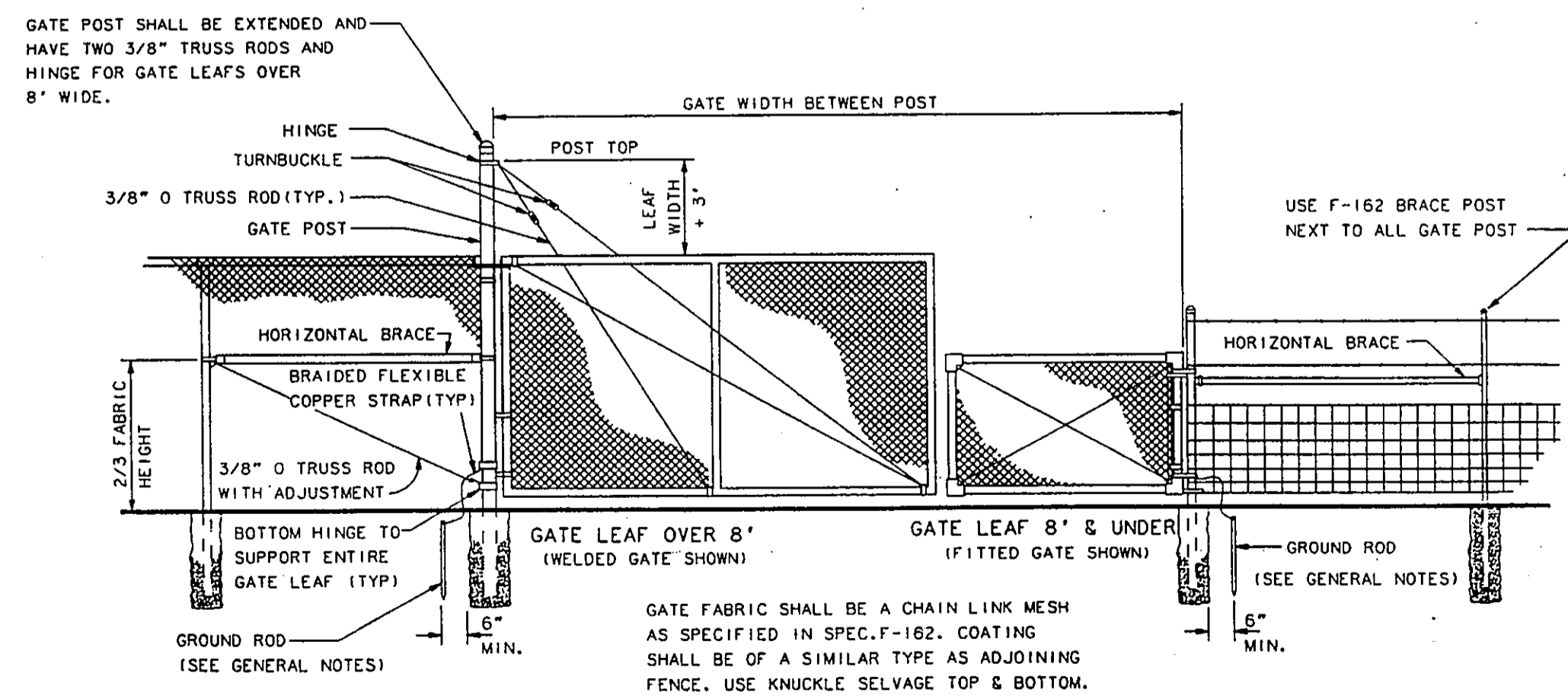
**FITTED CONNECTIONS**



8' WIDE OR LESS  
(TRUSS ROD NOT REQUIRED FOR LEAF 5' AND UNDER)

MORE THAN 8' WIDE

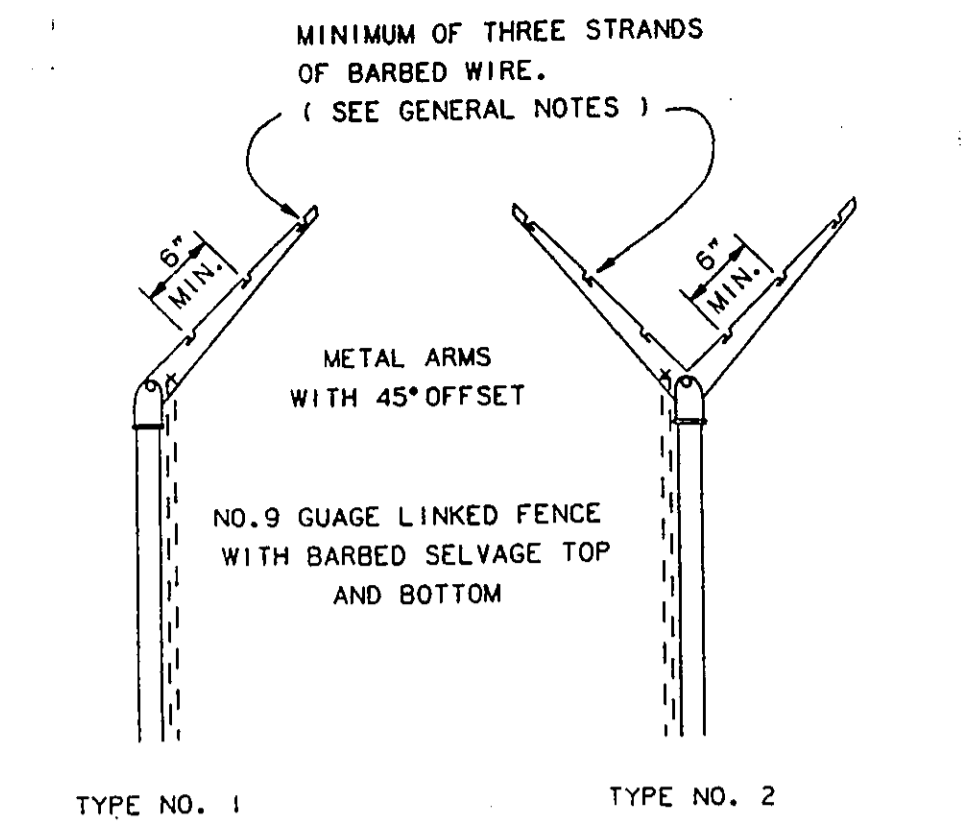
**WELDED CONNECTIONS  
GATE FRAMES**



GATE FABRIC SHALL BE A CHAIN LINK MESH AS SPECIFIED IN SPEC. F-162. COATING SHALL BE OF A SIMILAR TYPE AS ADJOINING FENCE. USE KNUCKLE SELVAGE TOP & BOTTOM.

DIMENSIONS	GATE WIDTH (ONE LEAF)			
	6' AND LESS	OVER 6' THROUGH 10'	OVER 10' THROUGH 15'	OVER 15' THROUGH 18'
A	12"	16"	20"	24"
B	48"	56"	62"	68"
C.Y. CONC.	0.13	0.26	0.45	0.70

NOTE: NO SEPARATE PAYMENT FOR CONC. USED FOR FENCE POST ANCHORS.



FENCE POST SHALL BE SET BACK SO BARBED WIRE DOES NOT EXTEND OVER PROPERTY LINES. TYPE NO. 1 ARMS SHALL BE INSTALLED ON SIDE AWAY FROM AIRPORT PROPERTY OR AIRCRAFT OPERATIONS AREA.

**BARBED WIRE EXTENSION ARMS**

CHAIN LINK FENCE MEMBERS DIMENSIONS & WEIGHTS (FED. SPEC. RR-F-00191)					
DESCRIPTION	SECTION	STEEL FRAME		ALUMINUM FRAME #	
		OUTSIDE DIMENSIONS (INCHES)	WEIGHT (LBS./FT.)	OUTSIDE DIMENSIONS (INCHES)	WEIGHT (LBS./FT.)
CORNER, BRACE, END, & PULL POSTS	○	2.375	3.65	2.375	1.253
	□	2.00	3.65	2.50	1.253
	○	2.875	5.79	2.875	2.00
	□	2.50	5.79	3.00	2.00
	ROLL FORM	3.5 x 3.5	5.10		
GATE POSTS	○	2.875	5.79	2.875	2.00
	□	2.50	5.79	3.00	2.00
	ROLL FORM	3.5 x 3.5	5.10		
GATE LEAF WIDTH OVER 6' THRU 13'	○	4.00	9.10	4.00	3.00
	○	6.625	18.97	6.625	7.00
	○	8.625	24.70	8.625	10.50
	○	1.90	2.72	1.90	0.94
LINE POSTS	○	2.375	3.65	2.375	1.25
	○	1.90	2.72	1.90	0.94
FABRIC HEIGHTS OVER 6'	○	1.875x1.625	2.70	1.875x1.625	0.91
	○	x0.113		x0.113	
FABRIC HEIGHTS OVER 8'	○	2.25x1.95	4.10	2.25x1.95	1.25
	○	x0.143		x0.143	
RAIL & BRACES	○	1.660	1.806	1.660	0.786
	○	1.625x1.250	1.35		

NOTES: CLASS E FENCE

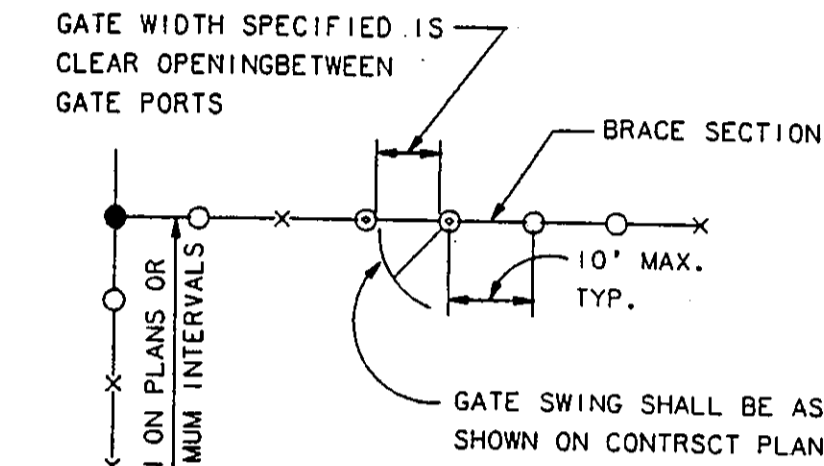
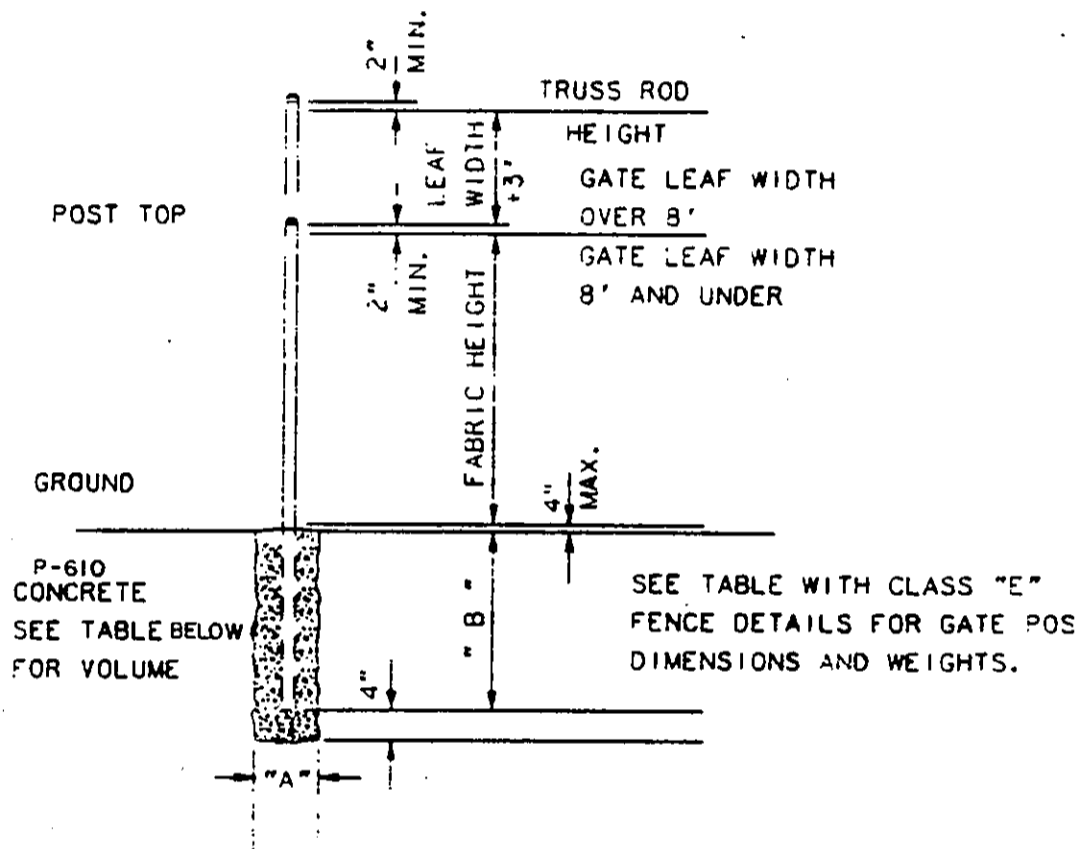
- FABRIC: 2"x2" NO. 9 GAUGE WIRE MESH PER ASTM A992-CLASS 11 (GALVANIZED) ASTM A401 (ALUMINUM COATED) ASTM B112-ALLOY 6061-T94 (ALUMINUM COATED) FED. SPEC. RR-F-191 (POLYETHYLENE-CHLORIDE COATED) UNLESS OTHERWISE SPECIFIED ON CONTRACT PLANS.
- SELVAGE, RAILS & TENSION WIRES: FENCES 60" AND UNDER IN TERMINAL AREAS SHALL HAVE KNUCKLE SELVAGE AND RAILS TOP AND BOTTOM. HAZARDOUS AND SECURITY AREAS TO BE FENCED SHALL HAVE BARBED SELVAGE TOP AND BOTTOM WITHOUT RAILS. WHEN RAILS ARE OMITTED, NO. 7 GAUGE STEEL OR NO. 8 GAUGE ALUMINUM TENSION WIRES SHALL BE PROVIDED. IF RAILS AND BARBED SELVAGE ARE SPECIFIED THE BARBS SHALL EXTEND 1" ABOVE THE TOP RAIL.
- POSTS: SEE TABLE AT LEFT.
- FABRIC FASTENERS: MINIMUM 3/16"x3/4" STRETCHER BAR BENDED TO TERMINAL POSTS, OR INTEGRAL FABRIC FITTINGS ON TERMINAL POSTS. USE NO. 6 WIRE CLIPS FOR LINE POSTS AND NO. 9 WIRE CLIPS FOR BRACES, RAILS, AND TENSION WIRES. ALL FASTENERS SPACED 14" MAX. VERTICALLY, 24" MAX. HORIZONTALLY.
- COATINGS: ZINC COATINGS ON POSTS, RAILS, GATE FRAMES AND STEEL FITTINGS SHALL AVERAGE 2.0 OZ./SQ. FT. PER ASTM A123. NO INDIVIDUAL SPECIMEN SHALL HAVE LESS THAN 1.6 OZ./SQ. FT. IF OTHER TYPES OF COATINGS ARE FURNISHED, THEY SHALL MEET THE APPROPRIATE ASTM OR FEDERAL SPECIFICATION IN NOTE 1.
- FENCE HEIGHT: THE FABRIC HEIGHT IS THE NORMAL FENCE HEIGHT.

GENERAL NOTES

- DIMENSIONS:**  
ALL DIMENSIONS, SIZES, GAUGES, WEIGHTS OR THICKNESSES SHOWN ARE THE MINIMUM ACCEPTABLE. UNLESS OTHERWISE INDICATED.
- SPECIFICATIONS:**  
THE FEDERAL SPECIFICATIONS SHOWN SHALL BE INTERPRETED TO MEAN THE LATEST ISSUE OR AMENDMENT OF SUCH SPECIFICATION IN EFFECT OF THE DATE OF PLAN APPROVAL.  
FAA SPECIFICATIONS SHOWN ARE FROM THE FEDERAL AVIATION ADMINISTRATION STANDARD SPECIFICATIONS FOR CONSTRUCTION OF AIRPORTS.  
MATERIALS AND CONSTRUCTION METHODS NOT DETAILED HEREON, SHALL BE IN ACCORDANCE WITH THE FAA SPECIFICATIONS LIST UNLESS OTHERWISE NOTED ON THE CONTRACT PLANS.
- MEASUREMENTS:**  
FENCES ARE MEASURED IN PLACE, FROM OUTSIDE TO OUTSIDE OF END CORNER OR GATE POST. MEASUREMENT DOES NOT INCLUDE GATE OPENINGS.  
GATES ARE MEASURED IN UNITS FOR EACH TYPE AND SIZE INSTALLED.

**CHAIN LINK FENCE, CLASS E, FAA SPEC. F-162**

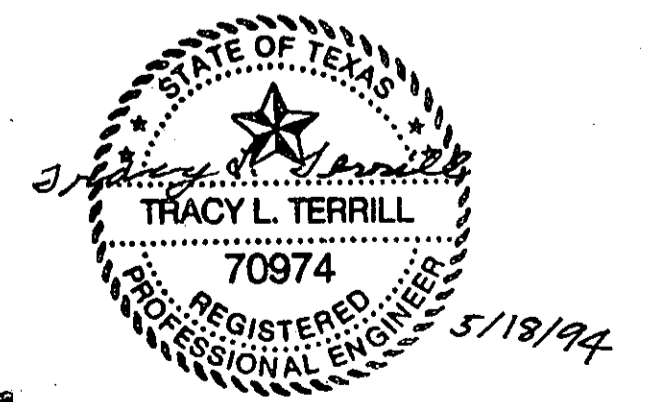
OVERALL POST HEIGHTS VARY WITH POST TOP DESIGN OF MANUFACTURER



**LEGEND**

- × LINE POST
- GATE POST
- TERMINAL POST, END CORNER, PULL (ANCHOR)
- BRACE POST

**TYPICAL FENCE LAYOUT ALL CLASSES**



**AS BUILT**  
OCT 20 1995

DESIGN: T.L.T.	A.P. NO. 9-48-0063-06		
DRAWN: M.J.C.	BID NO. 94-33		
CHECKED: L.D.T.	JOB NO. Y8024.60	Date	Revisions
SCALE: NOT TO SCALE			By

**Greiner, Inc.**  
Greiner, Inc.  
Fort Worth, Texas  
Engineers, Architects  
and Planners

**ADDISON AIRPORT**

**FENCING DETAILS**

SHEET 28  
DATE: MAY, 1994