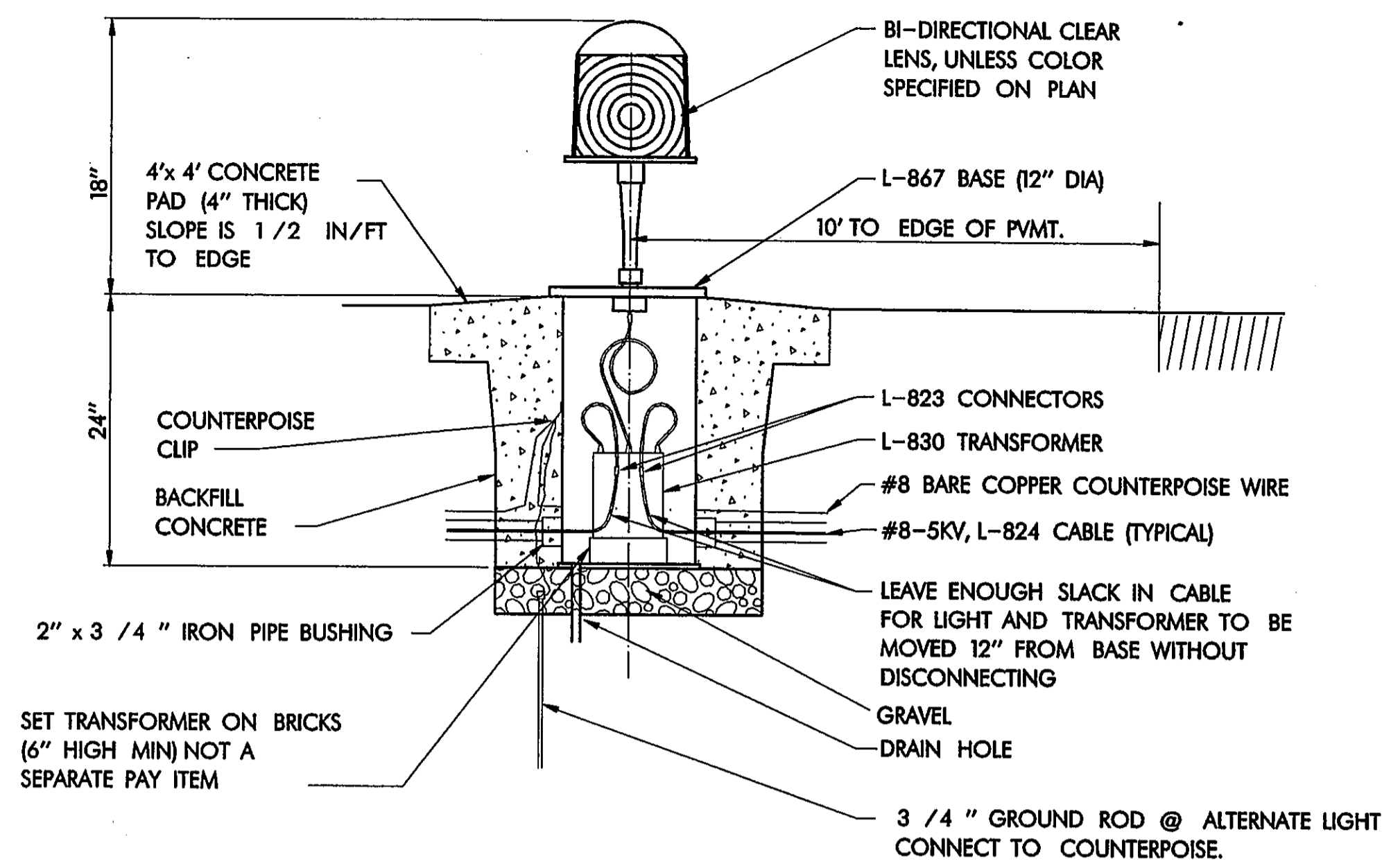


CAUTION:
EXISTING BURIED CABLE FOR RUNWAY
CIRCUIT LOCATED APPROX. 8' TO 12'
FROM EDGE OF RUNWAY PAVEMENT.

ELEVATED T/W LIGHTING INSTALLATION

NOT TO SCALE



CAUTION:
EXISTING BURIED CABLE FOR RUNWAY
CIRCUIT LOCATED APPROX. 8' TO 12'
FROM EDGE OF RUNWAY PAVEMENT.

ELEVATED R/W LIGHTING INSTALLATION

NOT TO SCALE

GENERAL NOTES:

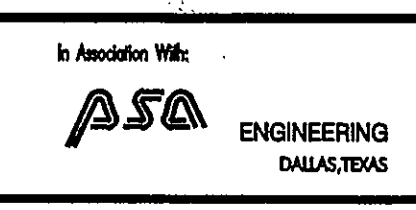
1. CONTRACTOR TO VERIFY EXISTING CONDITIONS TO HIS OWN SATISFACTION PRIOR TO ANY EXCAVATION. ANY DAMAGE TO EXISTING SYSTEMS SHALL BE REPAIRED IMMEDIATELY AT CONTRACTOR'S EXPENSE.
2. EXISTING UNDERGROUND CABLES ARE LOCATED BASED ON AVAILABLE INFORMATION.
3. ALL EXCAVATION WITHIN 5' OF ALL KNOWN UNDERGROUND CABLES SHALL BE DUG BY HAND. F.A.A. CABLES ARE APPROXIMATELY 26" BELOW GRADE.
4. ALL FIELD SPLICE ON PROPOSED CIRCUIT TO BE PERFORMED USING MANUFACTURED KIT APPROVED BY F.A.A.
5. CONTRACTOR SHALL MAINTAIN RUNWAY LIGHTING SYSTEM FOR NEXT DAY OPERATION.
6. ALL EXIST R/W LIGHTING CIRCUITS TO REMAIN OPERATIONAL.
7. ALL F.A.A. CABLES TO BE SPLICED BY F.A.A. PERSONNEL ONLY, CONTACT F.A.A. AT LEAST ONE WEEK IN ADVANCE.
8. INSPECTION OF LIGHTING SYSTEM BY AIRPORT OPERATION STAFF IS REQUIRED PRIOR TO RUNWAY REACTIVATION.
9. ALL DETAILS SHOWN ON THIS SHEET ARE INCIDENTAL TO BID ITEM, UNLESS NOTED OTHERWISE.

AS BUILT
OCT 20 1995



DESIGN: P. SRIBHEN, P.E.	A.I.P. NO. 3-46-0063-06			
DRAWN: PSA ENGINEERING	BID NO.: 94-33			
CHECKED: P. SRIBHEN, P.E.	JOB NO.: PSA 9402	Date	Revisions	By
SCALE:				

Greiner Fort Worth, Texas
Engineers, Architects
and Planners



ADDISON AIRPORT

AIRFIELD LIGHTING INSTALLATION DETAILS