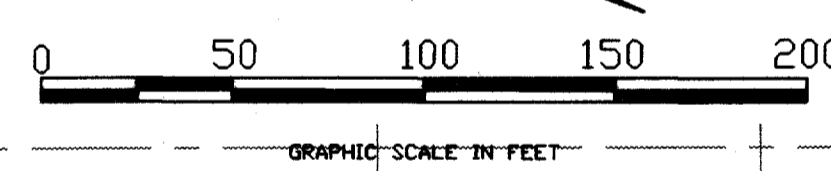
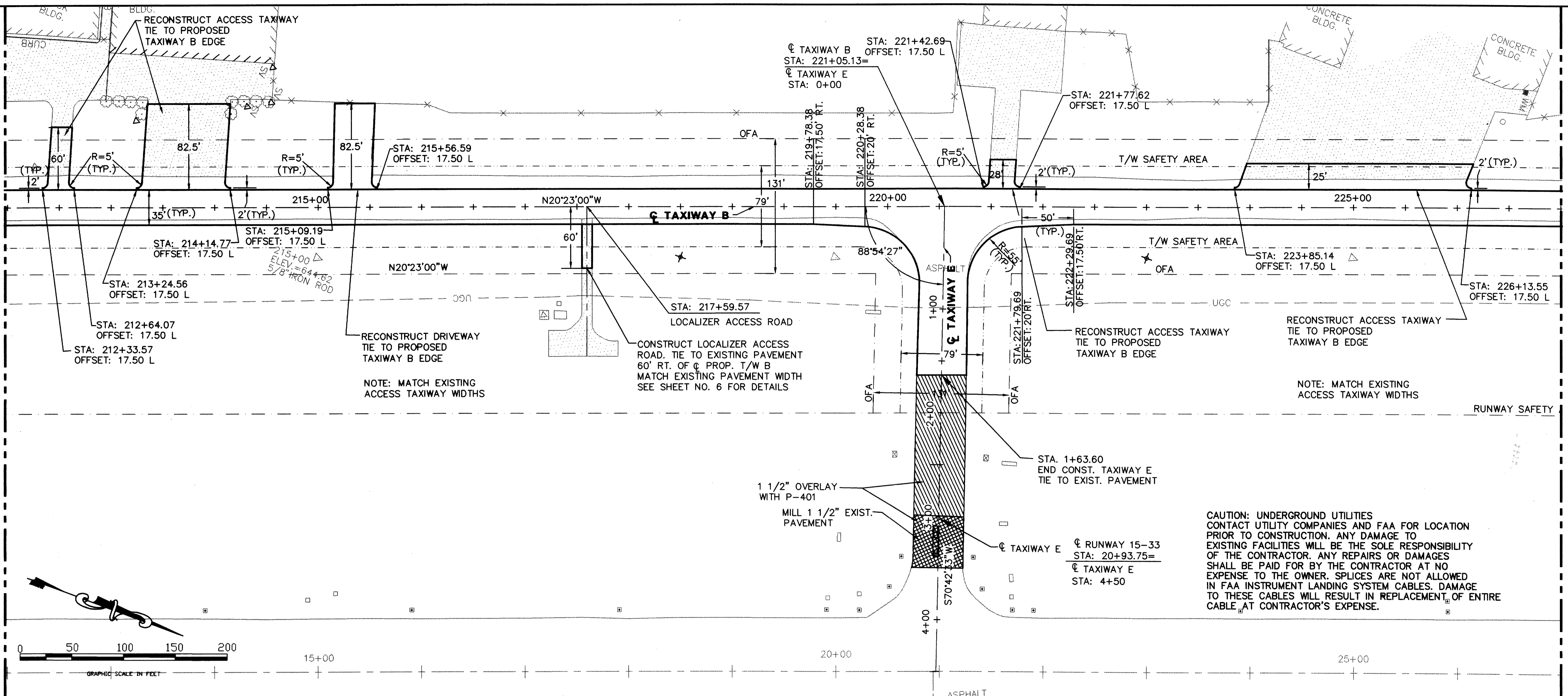


MATCH LINE STA. 212+00 SEE SHEET NO. 11

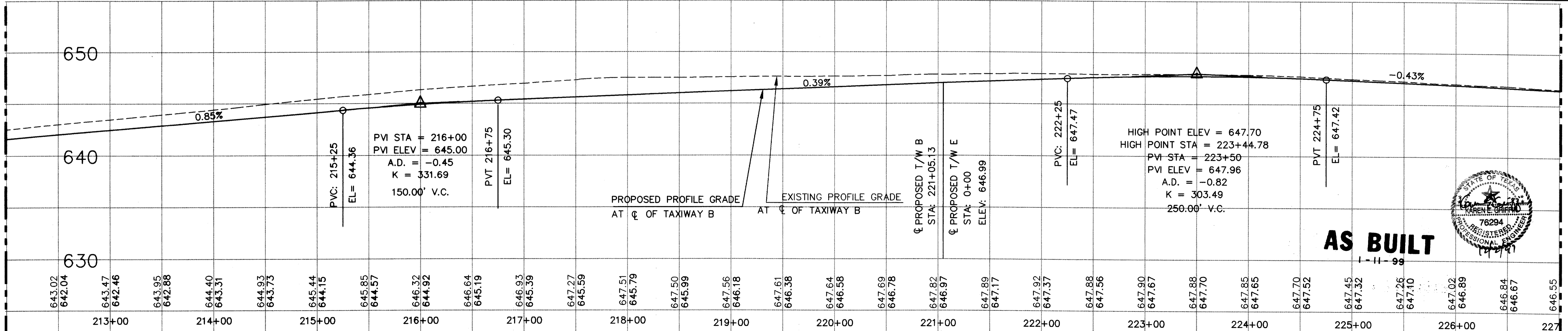
MATCH LINE STA. 227+00 SEE SHEET NO. 13



CAUTION: UNDERGROUND UTILITIES CONTACT UTILITY COMPANIES AND FAA FOR LOCATION PRIOR TO CONSTRUCTION. ANY DAMAGE TO EXISTING FACILITIES WILL BE THE SOLE RESPONSIBILITY OF THE CONTRACTOR. ANY REPAIRS OR DAMAGES SHALL BE PAID FOR BY THE CONTRACTOR AT NO EXPENSE TO THE OWNER. SPLICES ARE NOT ALLOWED IN FAA INSTRUMENT LANDING SYSTEM CABLES. DAMAGE TO THESE CABLES WILL RESULT IN REPLACEMENT OF ENTIRE CABLE AT CONTRACTOR'S EXPENSE.

MATCH LINE STA. 212+00

MATCH LINE STA. 227+00



DESIGN: T.L.T.
 DRAWN: M.J.G.
 CHECKED: R.B.
 SCALE: HORIZ. 1"=50'
 VERT. 1"=5'

PROJECT NO. 98-42 ADDSN	Date
REV. NO. 01	Revisions
JOB NO. E700024.80	By

URS Greiner
 4100 Arnon Carter Blvd., Suite 108
 Fort Worth, TX 76155
 (817) 545-0891
 Engineers, Architects
 and Planners



ADDISON AIRPORT

WEST TAXIWAY "B" PLAN AND PROFILE
 STA. 212+00 TO STA. 227+00

