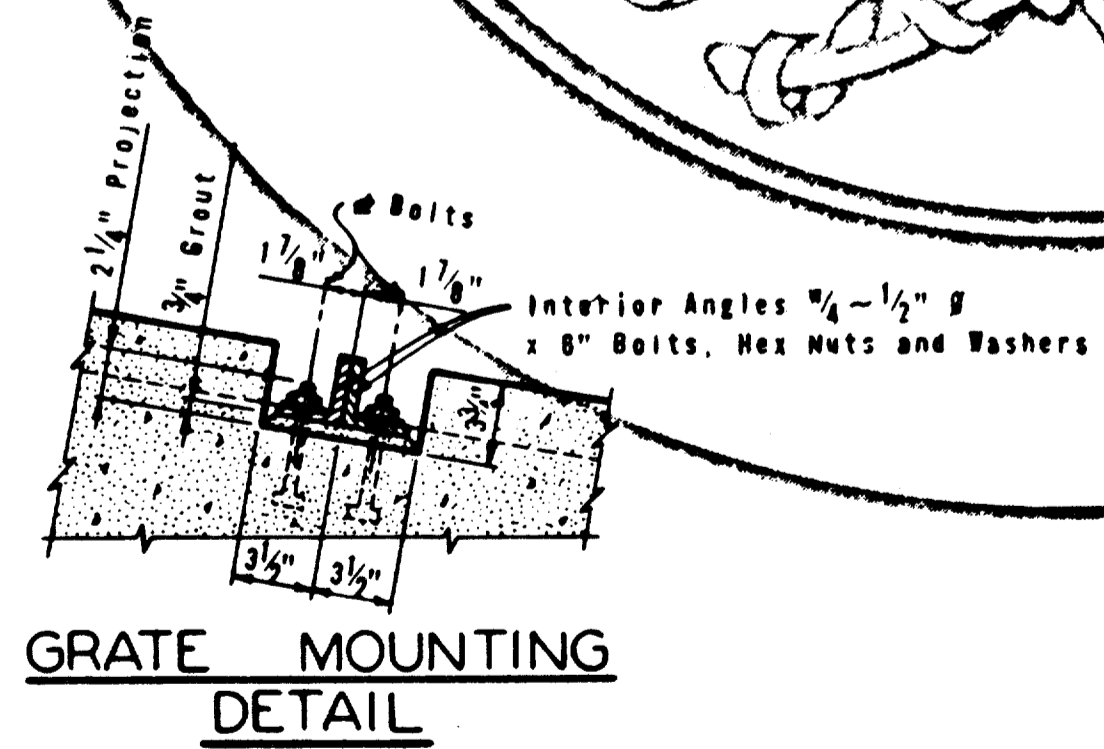
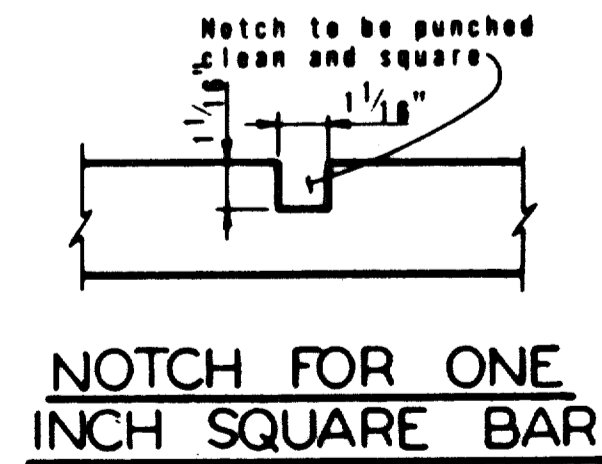
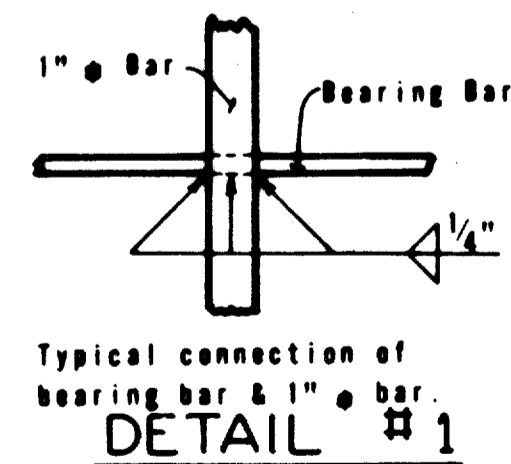
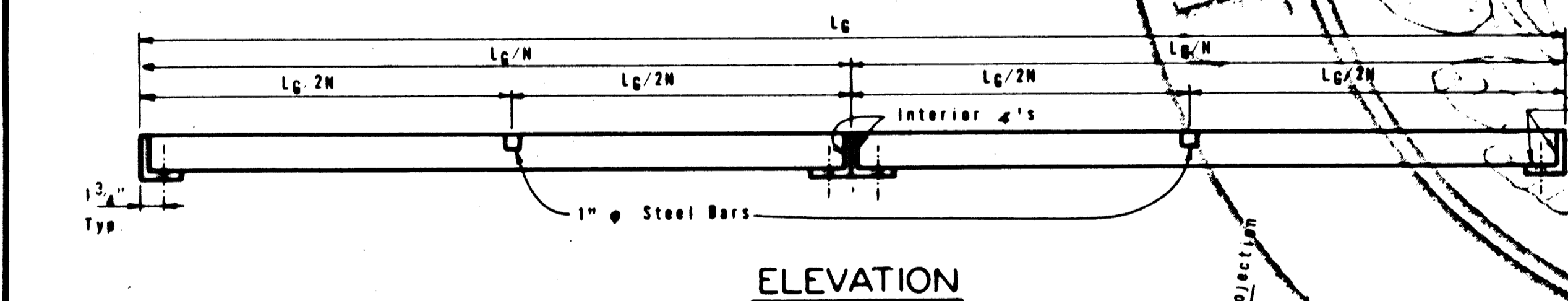
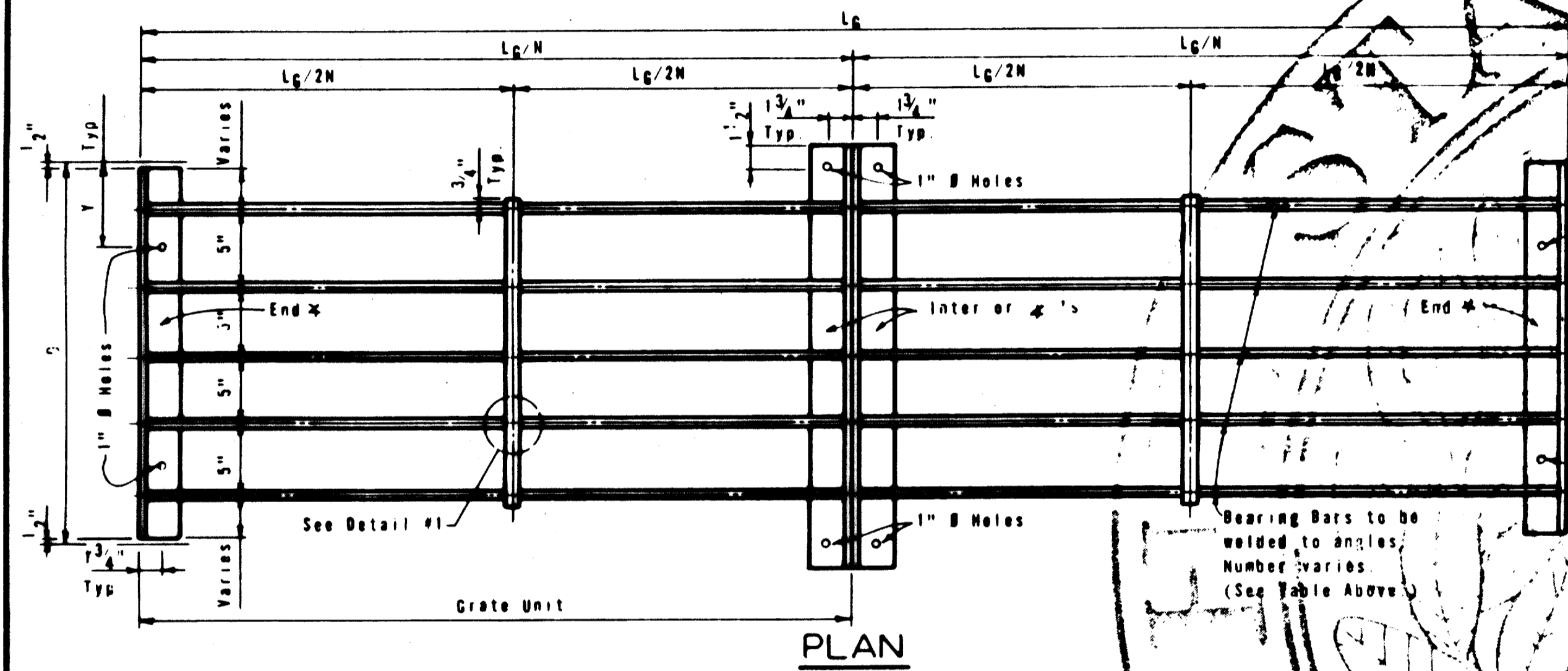
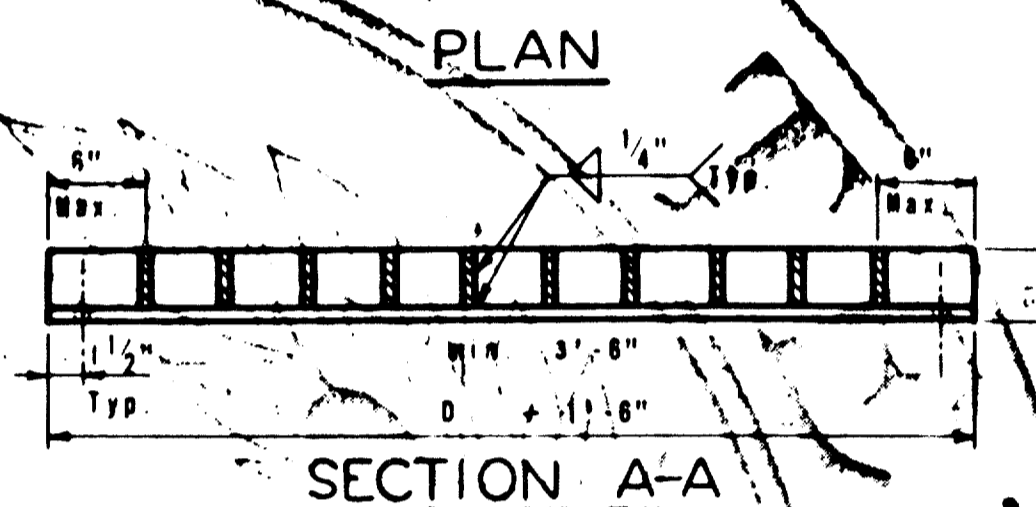
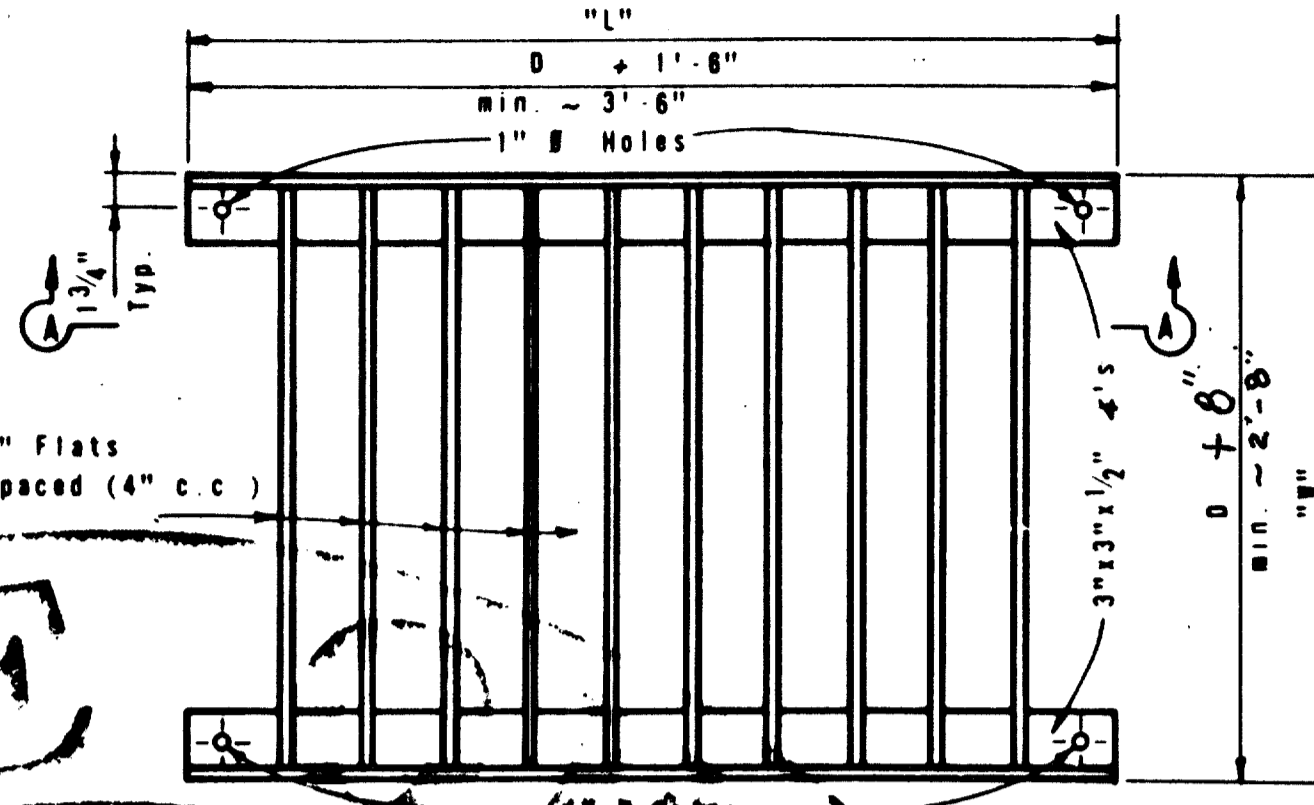


SLOPE	Y	DIAM. PIPE = D	GRATE QUANTITIES FOR SLOPING INLET																	
			TOTAL	BEARING BARS @ 5" C.C.				INTERIOR ANGLES				END ANGLES				1" BARS		TOTAL WEIGHT LBS.		
				NO	SIZE	Lg/N	WT.	NO	SIZE	LGTH.	WT.	NO	SIZE	LGTH.	WT.	NO	LGTH.		WT.	
6:1	4 1/2"	18"	2	2	8	2 1/2"x1/2"	6'-5 3/4"	220	2	3"x3"x1/2"	2'-0 1/2"	30	2	3"x3"x1/2"	1'-5"	27	2	1'-4 1/2"	9	295
6:1	5"	24"	2	2	10	2 1/2"x1/2"	8'-1 3/4"	345	2	3"x3"x1/2"	2'-0 1/2"	40	2	3"x3"x1/2"	1'-5"	36	2	1'-9 1/2"	12	441
6:1	5 1/2"	30"	3	3	18	2 1/2"x1/2"	8'-6 1/4"	480	4	3"x3"x1/2"	3'-0 1/2"	114	2	3"x3"x1/2"	2'-5"	45	3	2'-2 1/2"	23	680
6:1	6"	36"	3	3	21	2 1/2"x1/2"	7'-7 1/4"	678	4	3"x3"x1/2"	3'-0 1/2"	133	2	3"x3"x1/2"	2'-11"	53	3	2'-7 1/2"	27	892
6:1	6 1/2"	42"	3	3	24	2 1/2"x1/2"	8'-0 5/8"	868	4	3"x3"x1/2"	4'-0 1/2"	152	2	3"x3"x1/2"	3'-5"	64	3	3'-0 1/2"	31	1,136
6:1	4 1/2"	48"	4	4	40	2 1/2"x1/2"	7'-4 1/4"	1,248	6	3"x3"x1/2"	4'-0 1/2"	256	2	3"x3"x1/2"	3'-11"	74	4	3'-10 1/2"	53	1,632

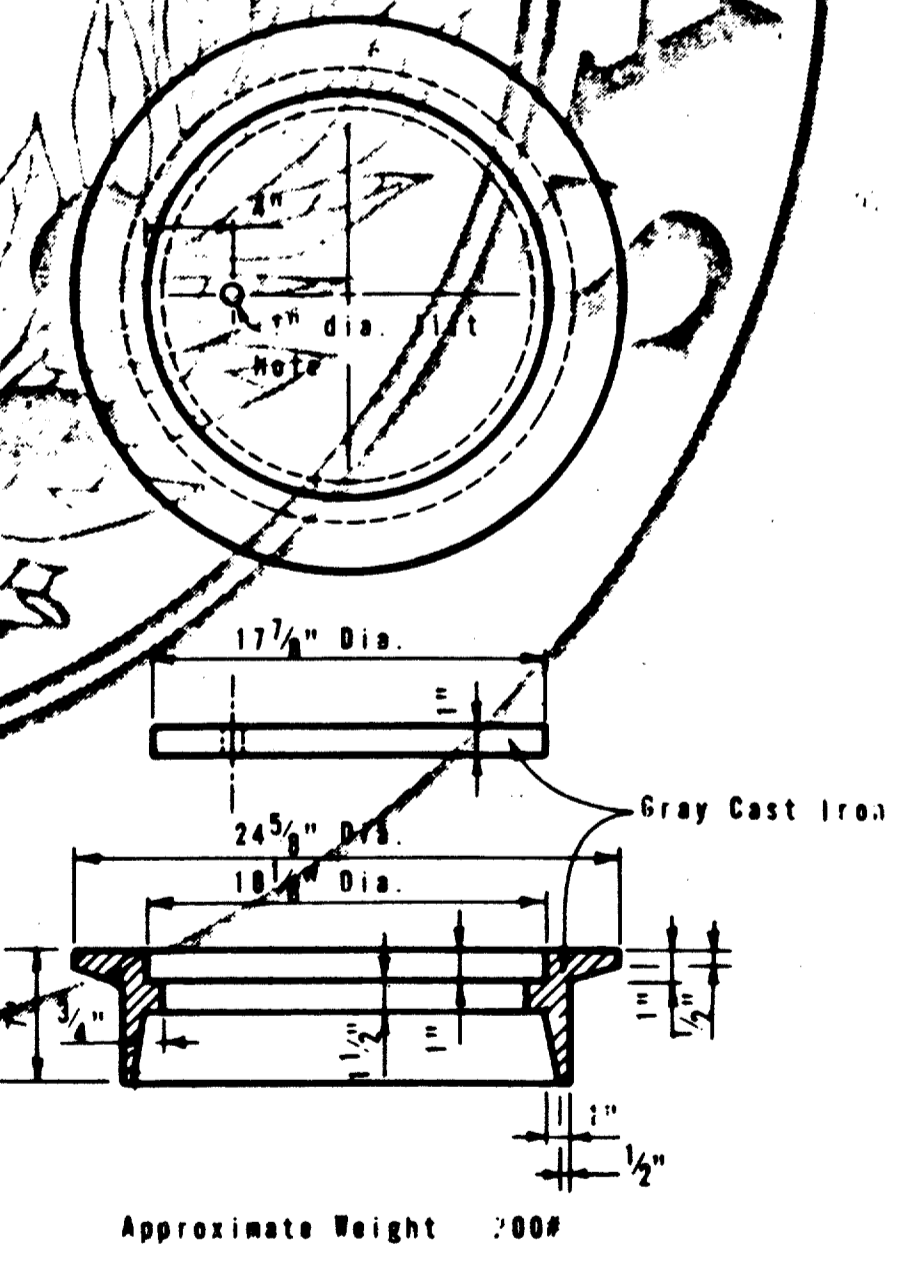
N = Number of grate units.  
 For pipe diameters of 21", 27", and 33" use grates for pipe diameters of 24", 30" and 36", respectively.



GRATE DETAILS FOR SLOPING INLET TYPE S

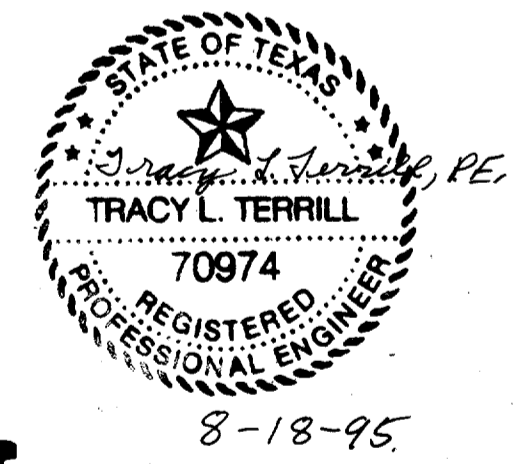


GRATE DETAILS FOR HORIZONTAL INLET TYPE H (MOD)



RING AND COVER DETAILS TYPE C

GENERAL NOTES  
 Structural Steel for grates shall conform to the requirements of ASTM Designation A-36 or AISI Designation #1010 - #1020.  
 Rings and covers of slightly different dimensions but approximately the same weight may be substituted if approved by the Engineer.



AS BUILT  
 1-11-99

STATE DEPARTMENT OF HIGHWAYS AND PUBLIC TRANSPORTATION  
 GRATE (TYPE S),  
 GRATE (TYPE H)(MOD)  
 RING & COVER (TYPE C)  
 ILG-S ILG-H(MOD)RC-C

ORIGINAL DRAWING DATE: DEC. 1977	STATE DISTRICT: 6	FEDERAL AID PROJECT:	SHEET: 24
DR.: ADC	REVISIONS:	COUNTY:	DATE: FEBRUARY
CR.: THD	REV. 4-94 GRATE DIMENSIONS	DISTRICT:	JOB:
DW.: MGB		CITY:	
CK.: THD			