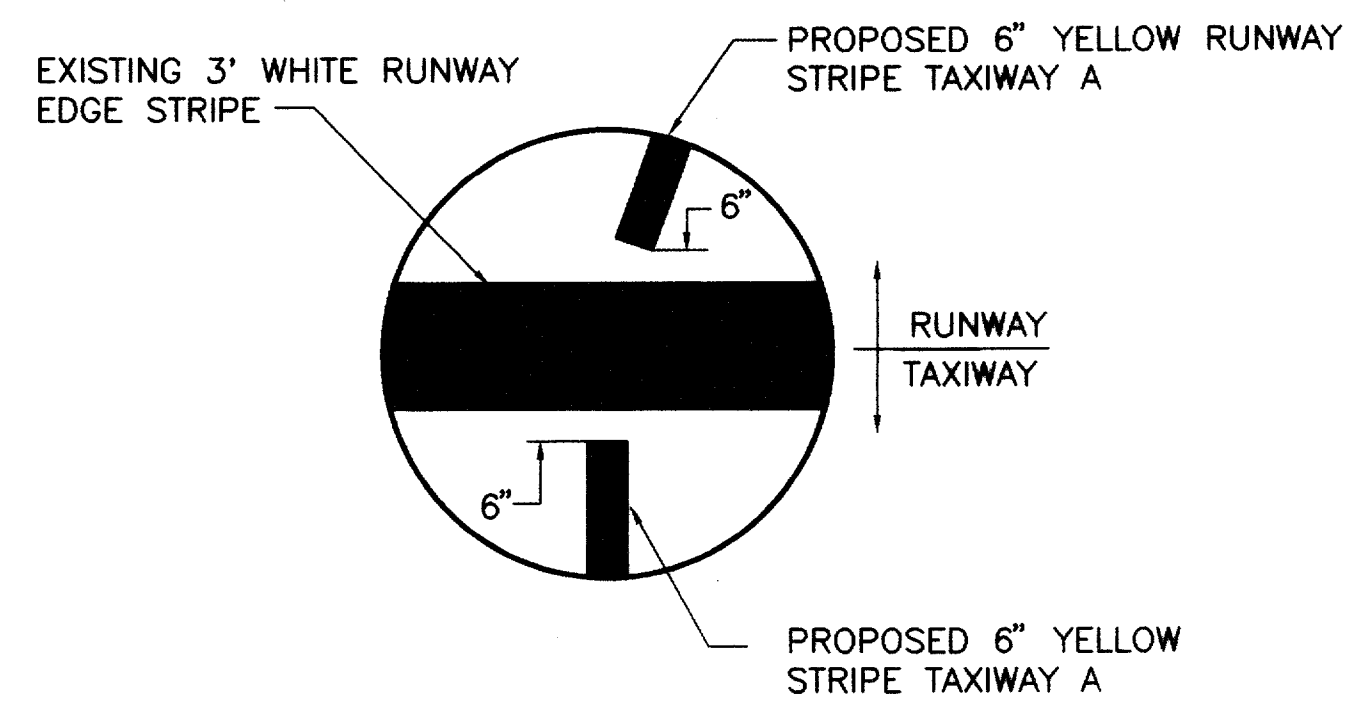
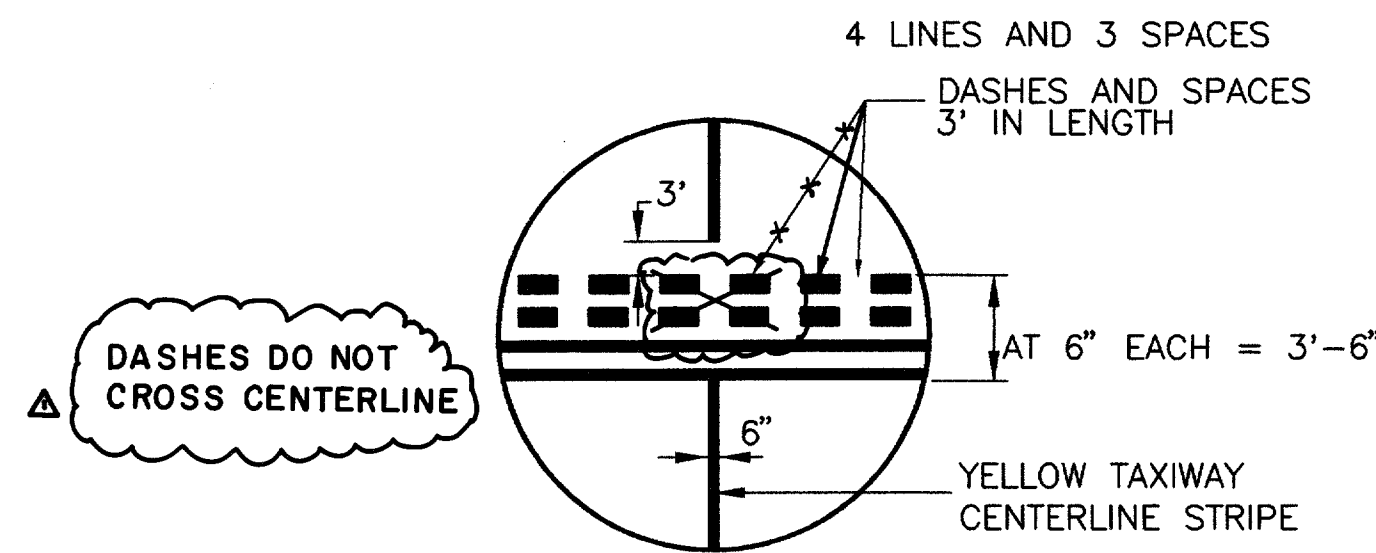


GENERAL MARKING NOTES

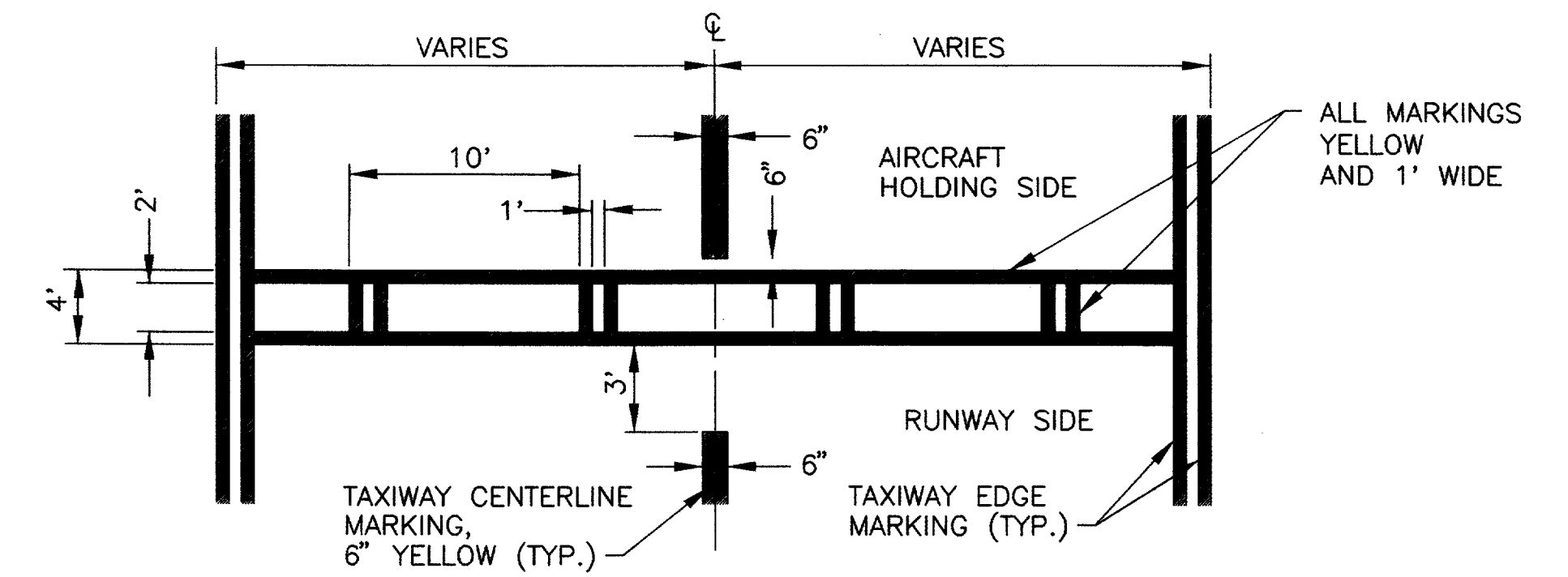
1. ALL TAXIWAY MARKING SHALL BE REFLECTIVE AVIATION YELLOW.
2. EXISTING TAXIWAY MARKINGS SHALL BE REMOVED TO THE APPROVAL OF THE ENGINEER, PRIOR TO REMARKING FOR PROPOSED STRIPING LAYOUT.
3. ALL MARKINGS SHALL BE IN ACCORDANCE WITH SPECIFICATION P-620.
4. HAND SPRAYING IS NOT ACCEPTABLE.
5. ANY MARKING TO BE OBLITERATED SHALL BE INCIDENTAL TO THE COST OF P-620 MARKING.
6. ALL MARKINGS ON CONCRETE PAVEMENT SHALL BE OUTLINED WITH 6" WIDE BLACK PAINT BORDER (FED. SPEC. TT-P-110) EXCEPT WHERE ADJACENT TO SHOULDER.



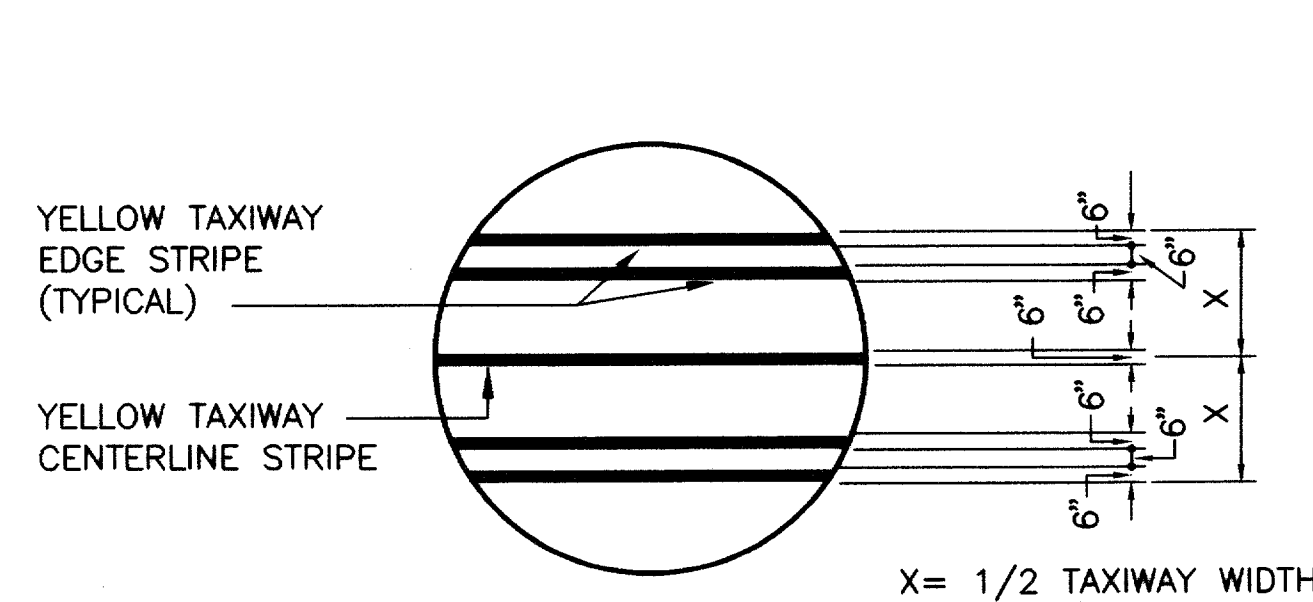
DETAIL A
N.T.S.



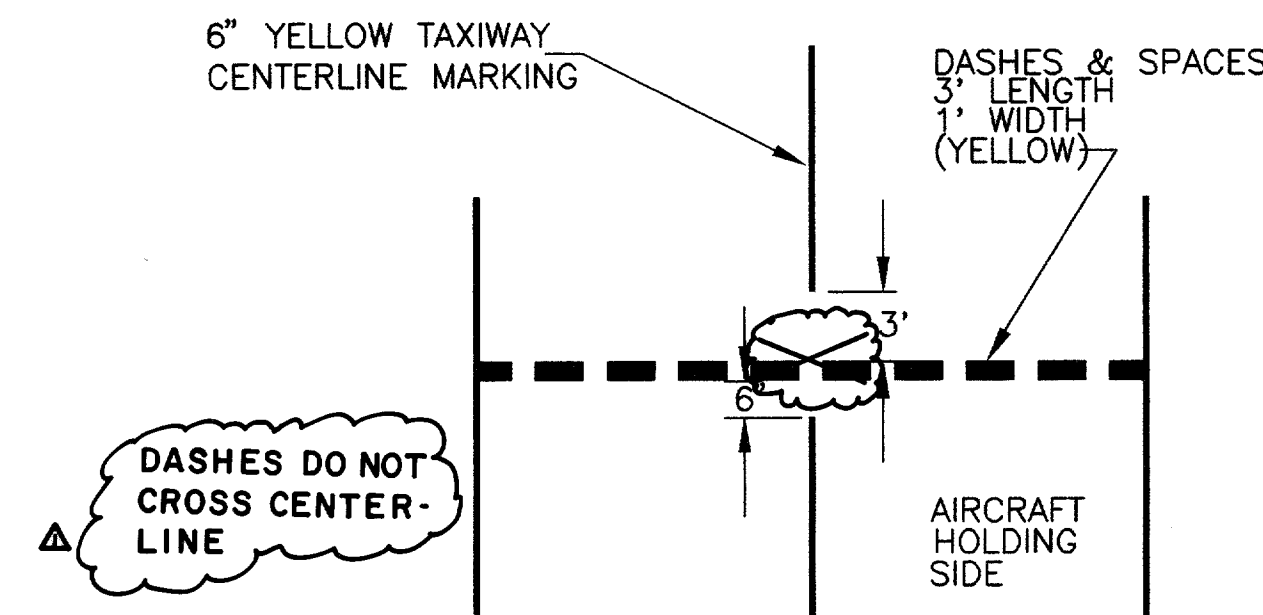
RUNWAY HOLDING POSITION MARKING DETAIL
N.T.S.



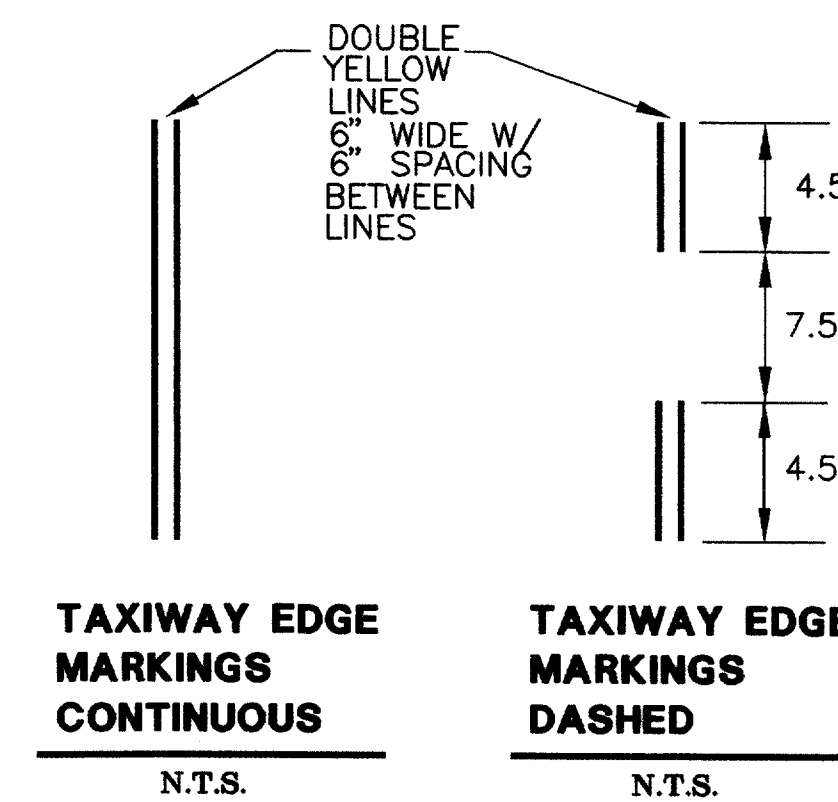
ILS HOLDING POSITION MARKING
N.T.S.



TAXIWAY MARKING DETAIL
N.T.S.

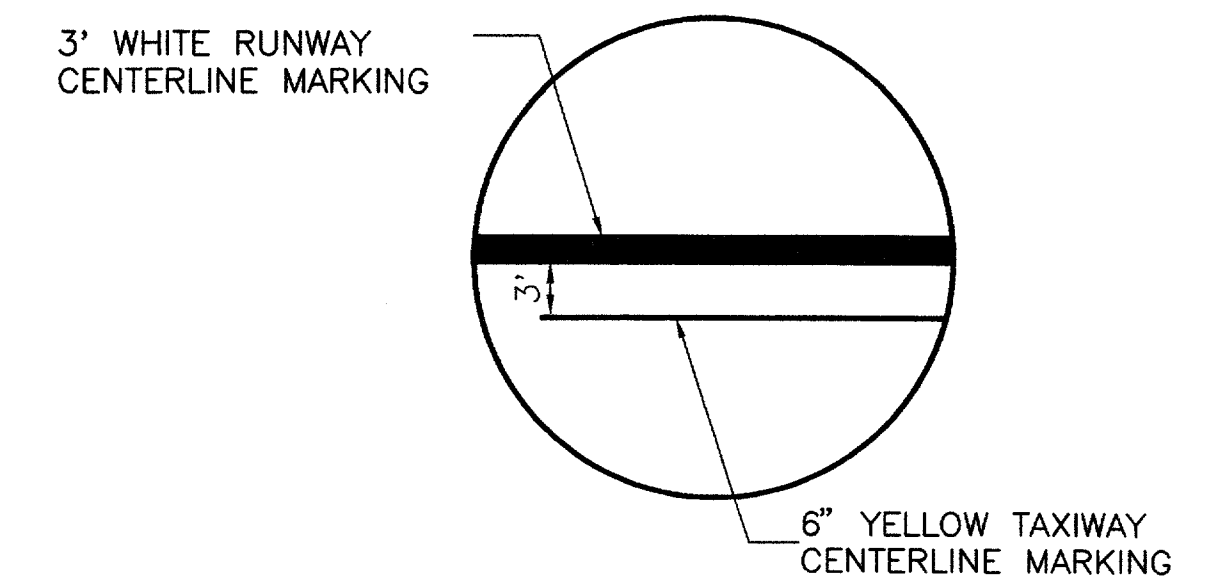


TAXIWAY HOLDING POSITION MARKINGS
N.T.S.



TAXIWAY EDGE MARKINGS CONTINUOUS
N.T.S.

TAXIWAY EDGE MARKINGS DASHED
N.T.S.



DETAIL "B"
N.T.S.

AS BUILT
1-11-99



DESIGN: T.L.T.	TXDOT NO: 9842 ADDSN	1-11-99 as built A	MG
DRAWN: J.R.H.	BID NO: 98-04		
CHECKED: R.L.B.	JOB NO: E708024.80	Date	Revisions
SCALE: N.T.S.		By	

URS Greiner
4100 Amon Carter Blvd., Suite 108
Fort Worth, TX 76155
(817) 545-0891

Engineers, Architects
and Planners

ADDISON AIRPORT

PAVEMENT MARKING DETAILS

SHEET **32**

DATE: DEC. 1997