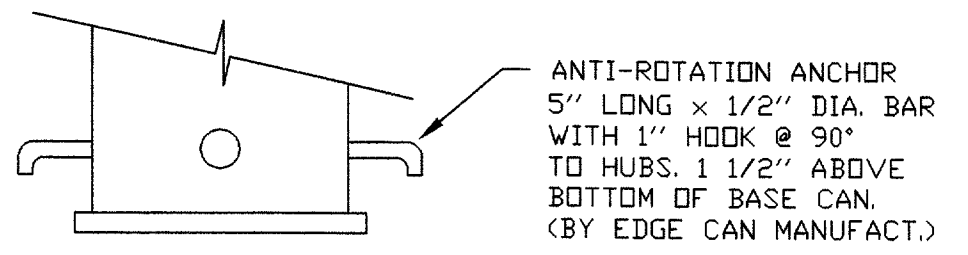
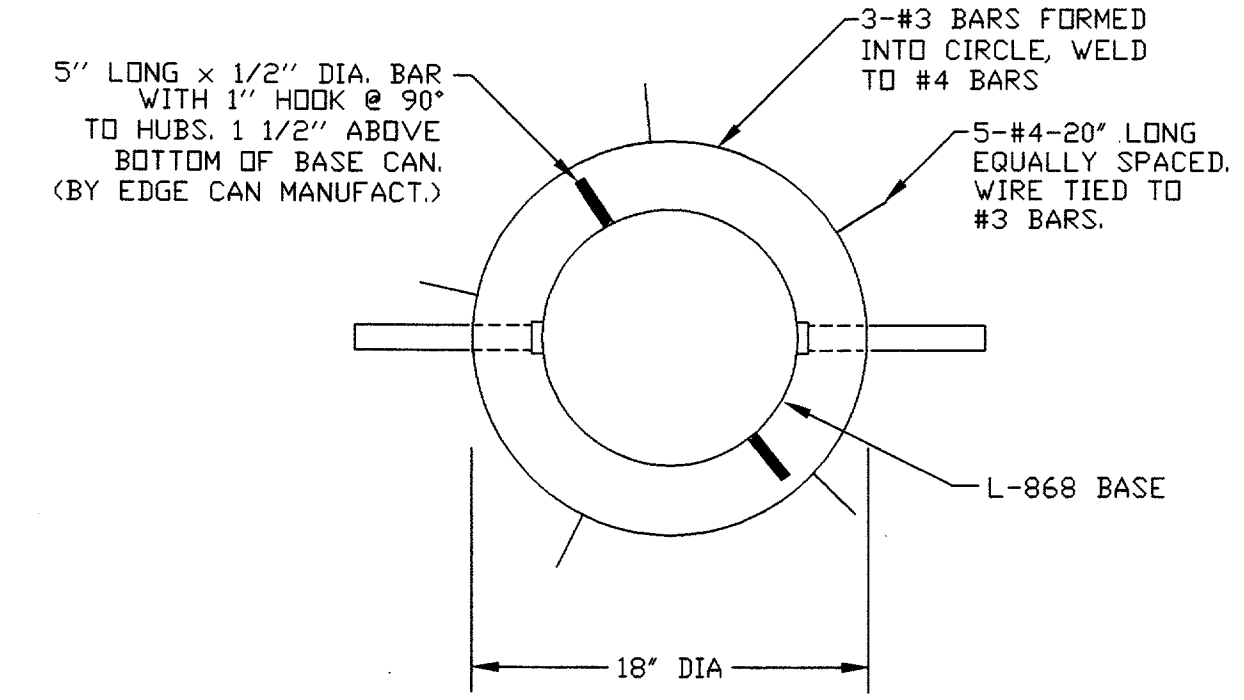


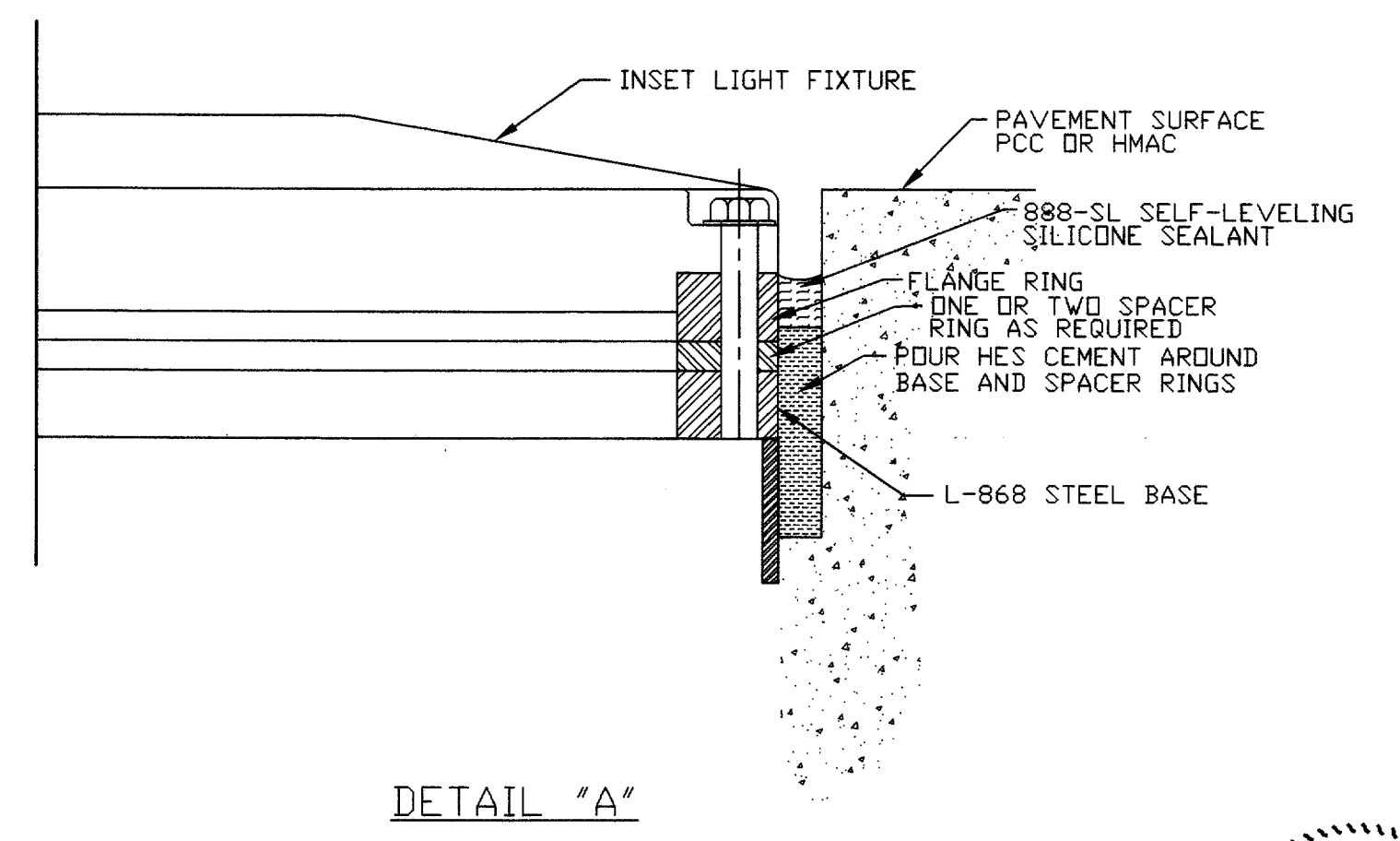
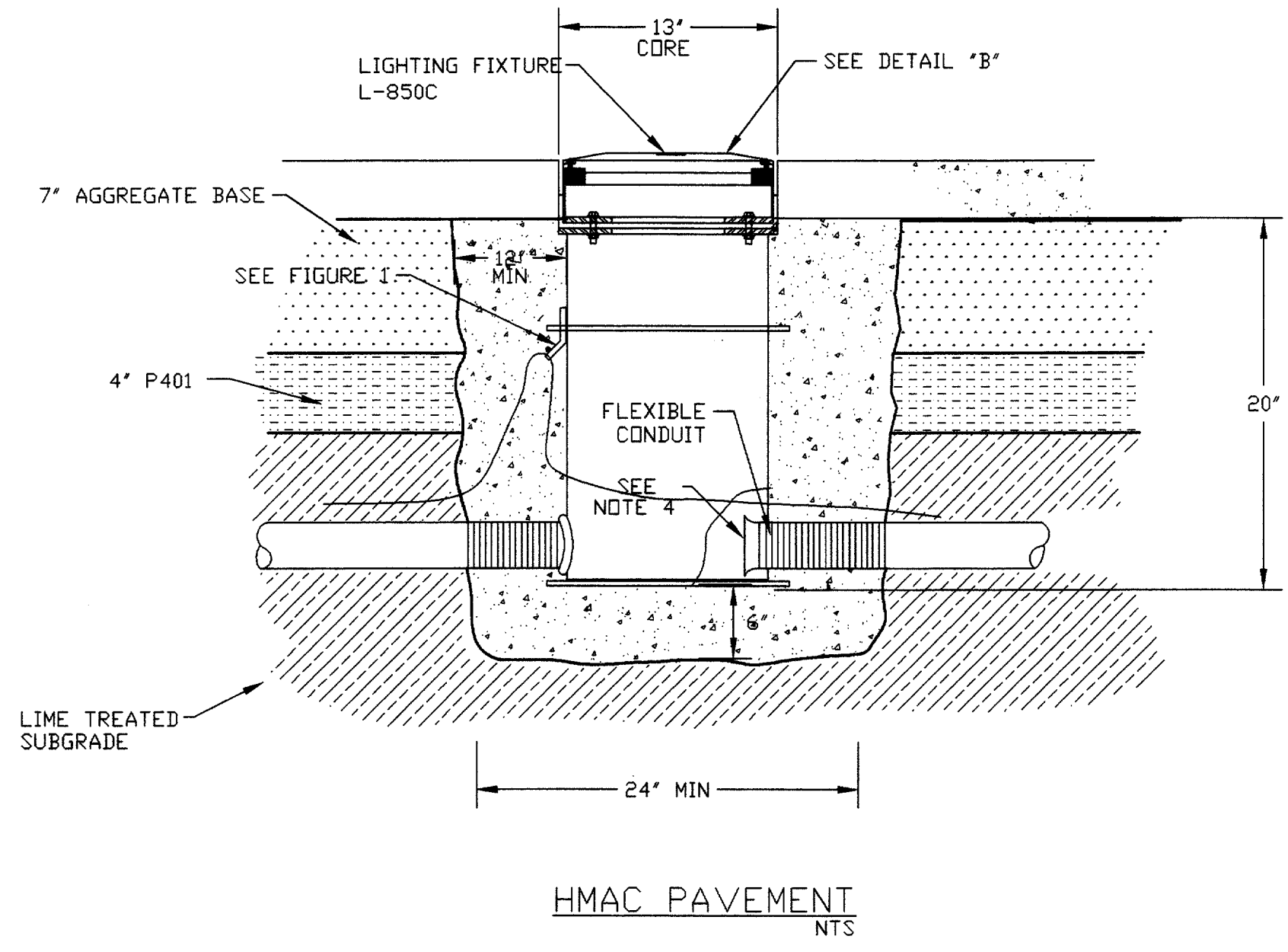
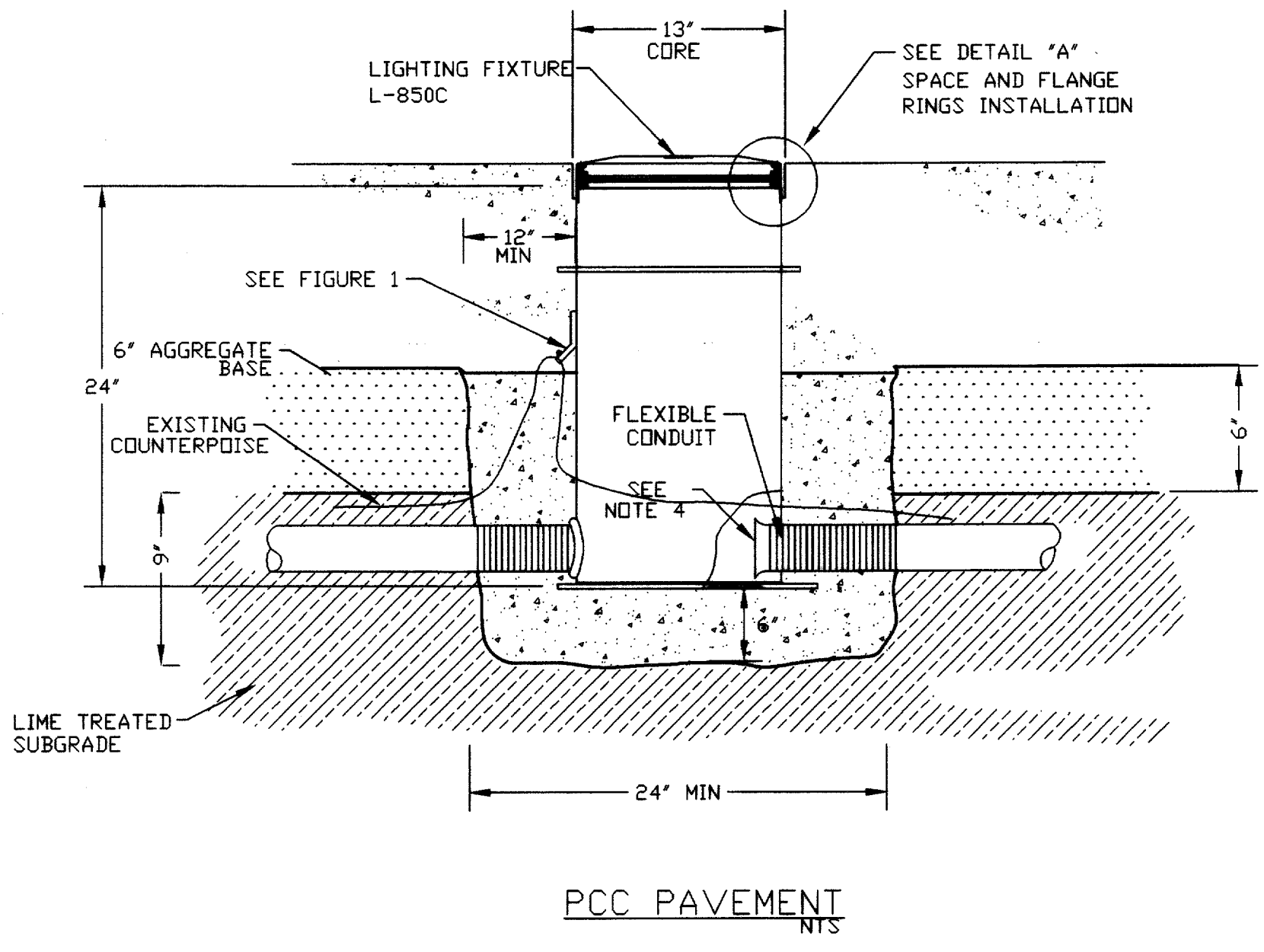
FIGURE 1
FACTORY GROUND LUG DETAIL
NTS

- GENERAL NOTES**
1. CONTRACTOR TO VERIFY EXISTING CONDITIONS TO HIS OWN SATISFACTION PRIOR TO ANY EXCAVATION. ANY DAMAGE TO EXISTING SYSTEMS SHALL BE REPAIRED IMMEDIATELY AT CONTRACTOR'S EXPENSE.
 2. SEE CABLE AND EDGE HEIGHT DETAIL SHEET FOR L-823 CONNECTORS.
 3. ALL THREADED CONNECTIONS SHALL BE COATED WITH 'ANTI-SEIZE' OR 'IDEAL NDALOX' COMPOUND PRIOR TO ASSEMBLY.
 4. COORDINATE INSTALLATION WITH EARTHWORK AND PAVING CONTRACTOR.
 5. TAXIWAY SURFACE SHALL BE SANDBLASTED CLEAN TO REMOVE ANY MATERIAL DEPOSITED ON THE SURFACE LEFT WHILE CORING.
 6. REUSE EXISTING TRANSFORMER.

ALIGNMENT JIG DETAIL
NO REFERENCE EDGE AVAILABLE
NTS

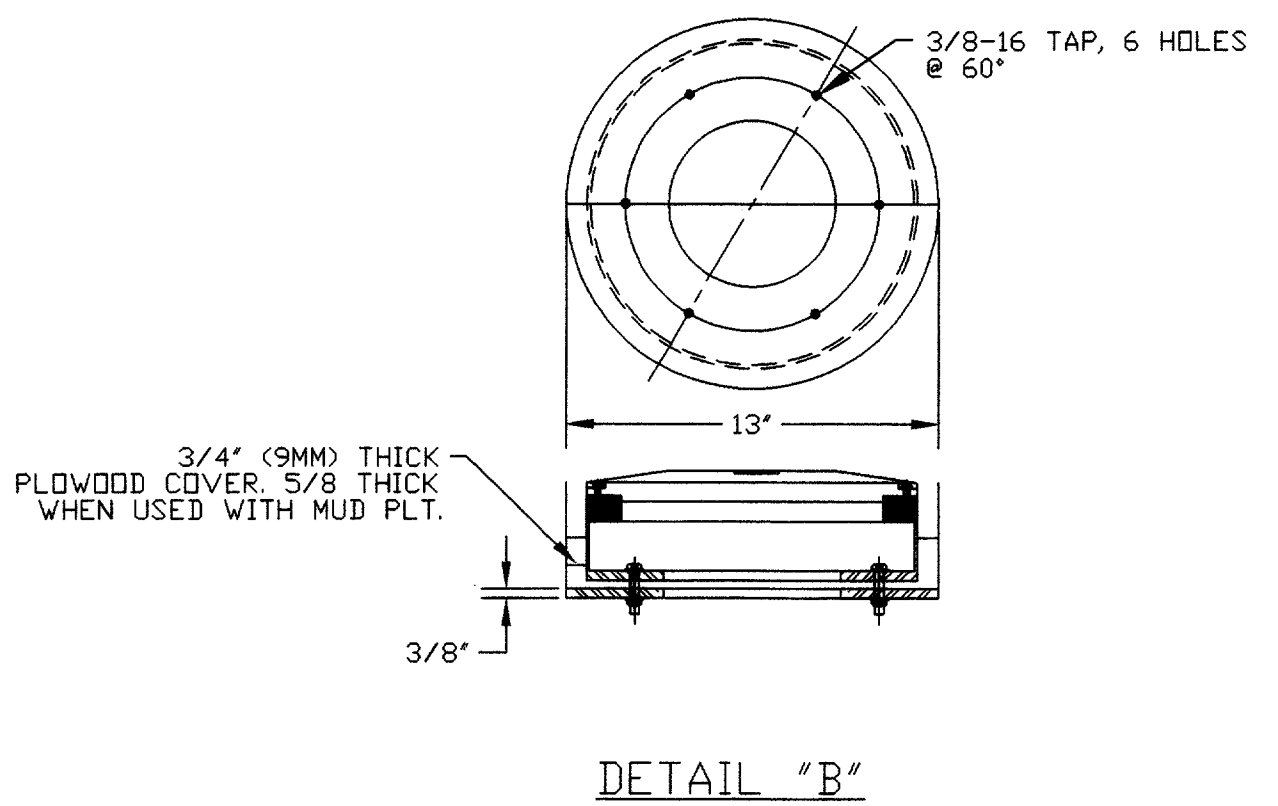


PLAN
ELEVATION
TIE BAR CAGE DETAIL
NTS



DETAIL "A"

- NOTES:**
1. THE USE OF MUD PLATES, CONSTRUCTION RINGS, EXTENSIONS, ETC., DEPENDANT ON PAVING TECHNIQUES.
 2. ORIENTATION TOLERANCE FOR THE BASE IS 1/2 DEGREE FROM THE AZIMUTH SHOWN ON PLANS.
 3. L-850C MOUNTS ON A 12"x24" L-868 BASE.
 4. CONDUITS SHALL PROTRUDE INTO LIGHT BASE 2.00' FOR PVC, INCLUDING END BELL.
 5. ADD APPROPRIATE SANDBAGS OR WEIGHT TO TOP TO PREVENT FLDATING.
 6. ROD CONCRETE UNDER BASE TO ASSURE THERE IS NO VOID IN CONCRETE UNDER BASE.
 7. THERE SHALL BE TWO FEET OF SLACK CABLE OUTSIDE OF BASE TO MAKE REQUIRED SPLICES AND CABLE TERMINATION.



DETAIL "B"

- NOTES:**
1. FIXTURE EDGE SHALL BE FLUSH WITH FINISHED GRADE.
 2. ATTACH THE LIGHT FIXTURE TO THE LIGHT BASE WITH STAINLESS STEEL BOLTS AND ANTI-ROTATIONAL WASHERS AT A TORQUE RECOMMENDED BY THE MANUFACTURER OF THE LIGHT BASE (USUALLY 180 IN. LBS.). PROVIDE A THIN LAYER OF SELF-LEVELING SILICONE SEALER BETWEEN THE SPACER OR FLANGE RING AND THE LIGHT-BASE FLANGE.



AS BUILT
1-11-99

| | | | |
|-----------------|-----------------------|------|-----------|
| DESIGN: R.W.G. | TXDOT NO. 9842 ADDSN | | |
| DRAWN: MIR | APP. NO. 0-40-0000-00 | | |
| CHECKED: P.S.A. | BID NO. 98-04 | | |
| SCALE: 1"=50' | JOB NO. Y8024.60 | Date | Revisions |

Greiner, Inc.
Greiner, Inc.
Fort Worth, Texas

ASA ENGINEERING
DALLAS, TEXAS 75287



ADDISON AIRPORT

**TAXIWAY "B" LIGHTING
RUNWAY SEMI-FLUSH LIGHT DETAIL**

SHEET 37
DATE: AUG 1995