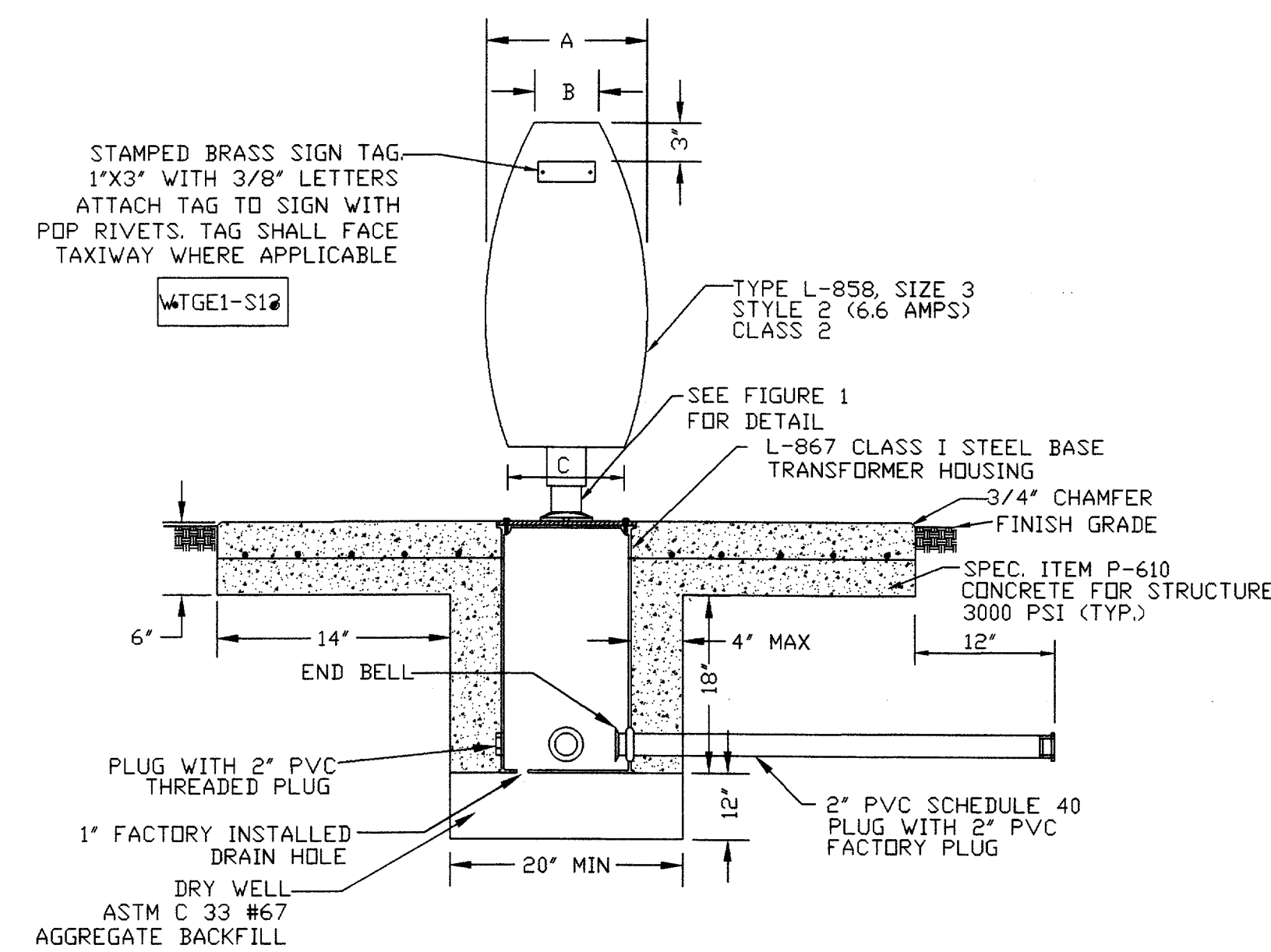


SECTION



SECTION  
NTS

SIZE	3
LTR	18
LAMPS	3
A	15.8"
B	6.0"
C	11.0"
D	31.3"
F	42.0"
G	10.6"
H	20.9"
J	40.4"
K	30.0"

SIZE 3 SIGN DIMENSIONS

- NOTES:
1. BASIC UNIT IS CONSTRUCTED OF ALUMINUM POLYCARBONATE PLASTIC. THE ALUMINUM TOP IS REMOVABLE FOR LEGEND PANEL CHANGES.
  2. LIGHT SHALL BE PROVIDED BY STANDARD QUARTZ LAMPS.
  3. MOUNTING WILL BE WITH FRANGIBLE COUPLINGS.
  4. SIGN SHALL HAVE LETTERING AND BACKGROUND COLOR PER AC 150/5340-18C.
  5. GUIDANCE SIGNS SHALL CONFORM TO FAA ADVISORY CIRCULAR AC-150/5345-44E, FAA CLASS 1, STYLE 2, SIZE 3, L-858 SIGN.
  6. GUIDANCE SIGNS SHALL BE DOUBLE SIDED.
  7. SIGN FACE SHALL DISPLAY INFORMATION AS SHOWN ON THE PLANS. SIGN FACES THAT ARE BLANKS SHALL HAVE BLACK PANELS.

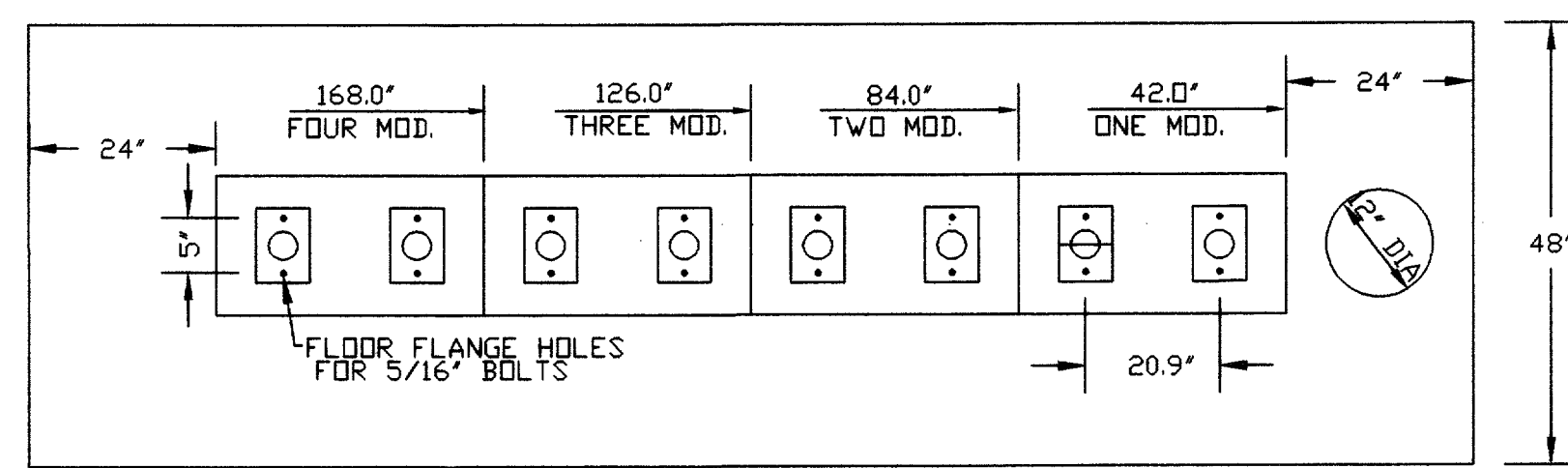
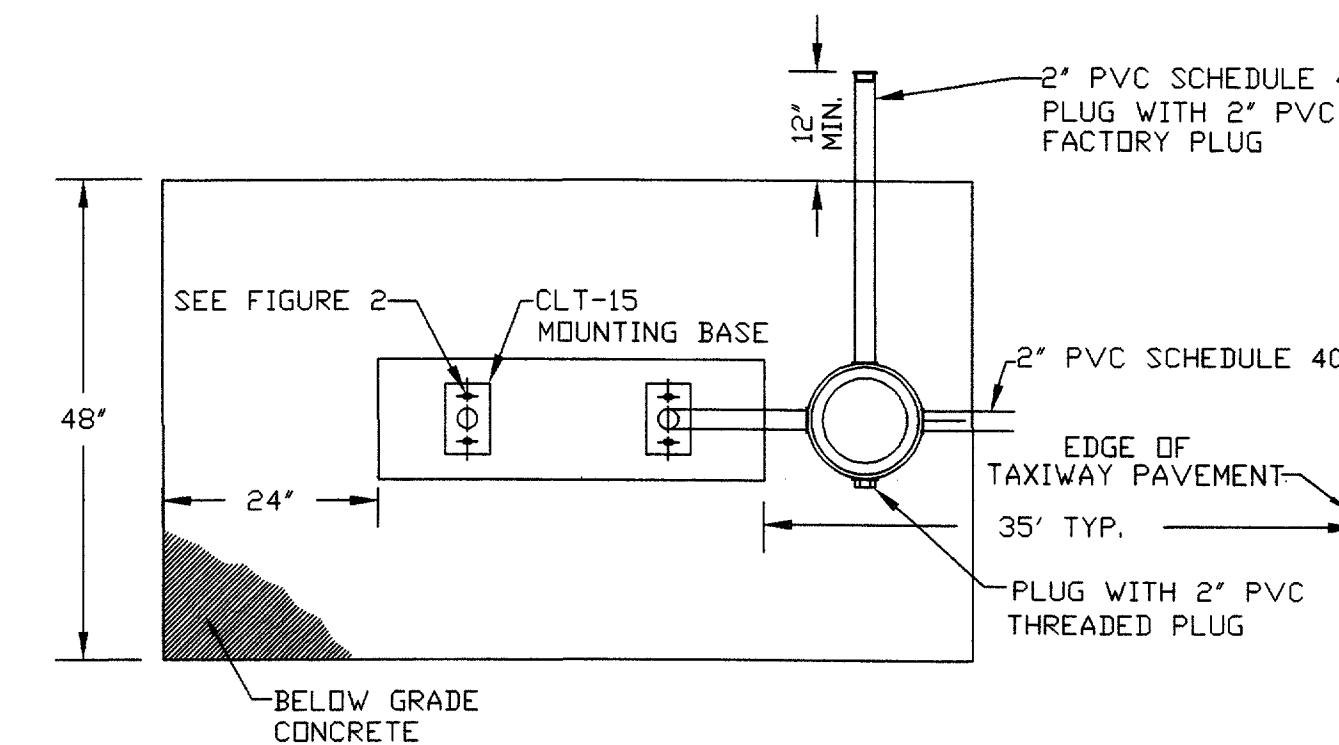


FIGURE 3

SIZE 3 SIGN BASE DIMENSIONS  
NTS



L-858 GUIDANCE SIGN BASE PLAN  
NTS

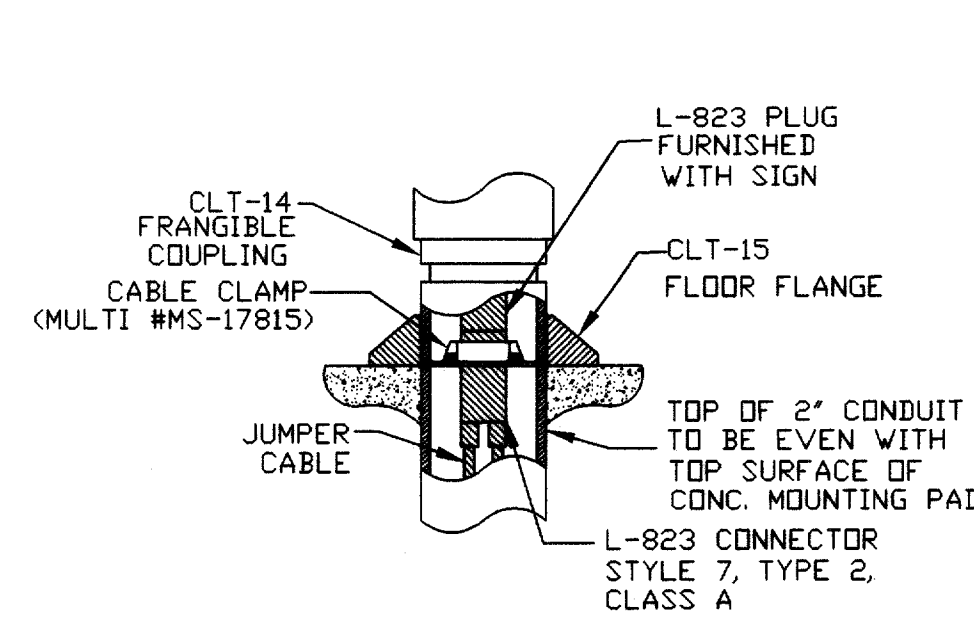


FIGURE 1

ELECTRICAL CONNECTION DETAIL  
NTS

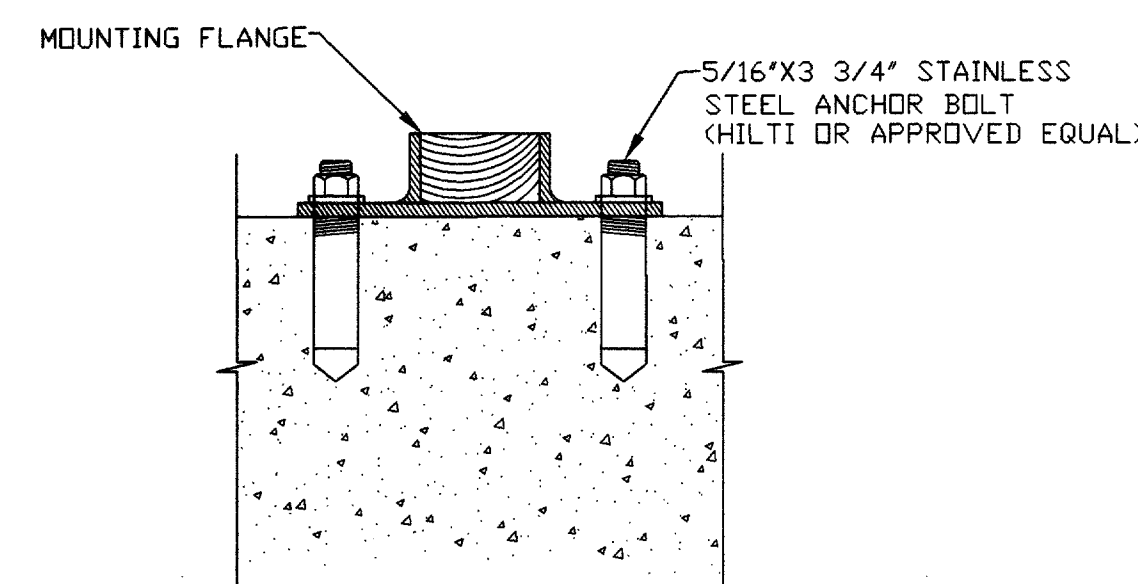


FIGURE 2

ANCHOR BOLT DETAIL  
NTS

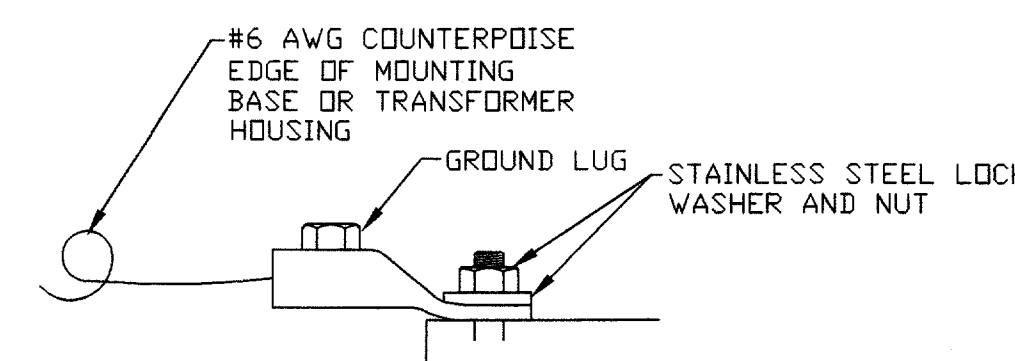


FIGURE 4

GROUND CONNECTOR DETAIL  
NTS

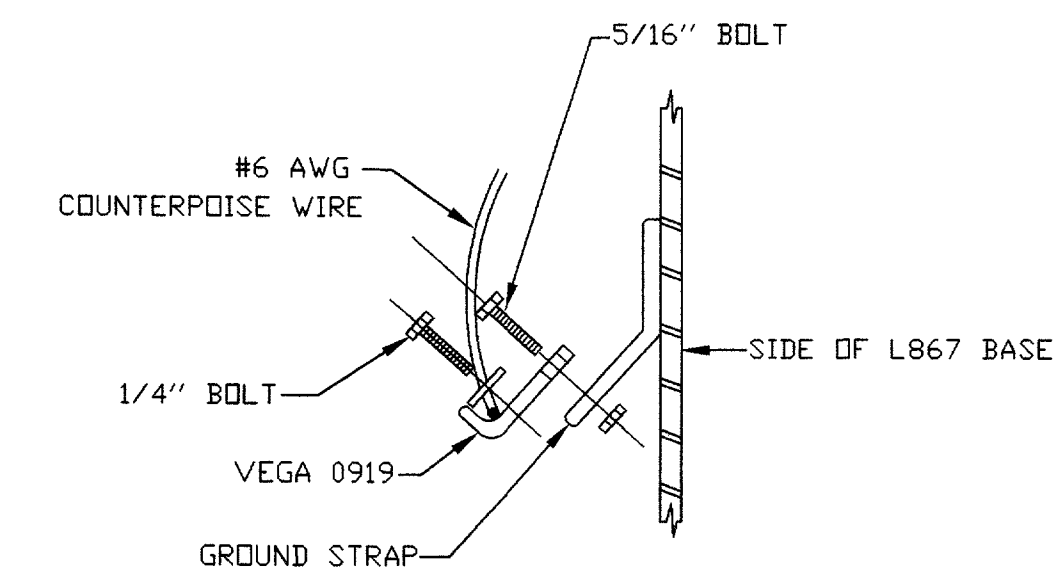
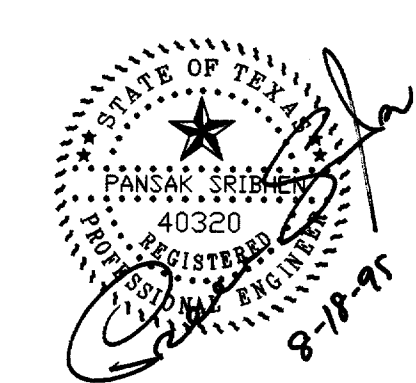


FIGURE 5

FACTORY GROUND LUG DETAIL  
NTS



**AS BUILT**  
1-11-99

DESIGN: <b>R.W.C.</b>	TxDOT NO. 9842 ADDSN	Date
DRAWN: <b>MIR</b>	APP. NO. 6883-06	Revisions
CHECKED: <b>P.S.A.</b>	BID NO. 98-04	By
SCALE: 1"=50'	JOB NO. Y8024.60	

**Greiner, Inc.**  
Greiner, Inc.  
Fort Worth, Texas

**ASA**  
ENGINEERING  
DALLAS, TEXAS 75287



**ADDISON AIRPORT**

**TAXIWAY "B" LIGHTING  
GUIDANCE SIGN DETAIL**

**SHEET 38**  
DATE: AUG 1995