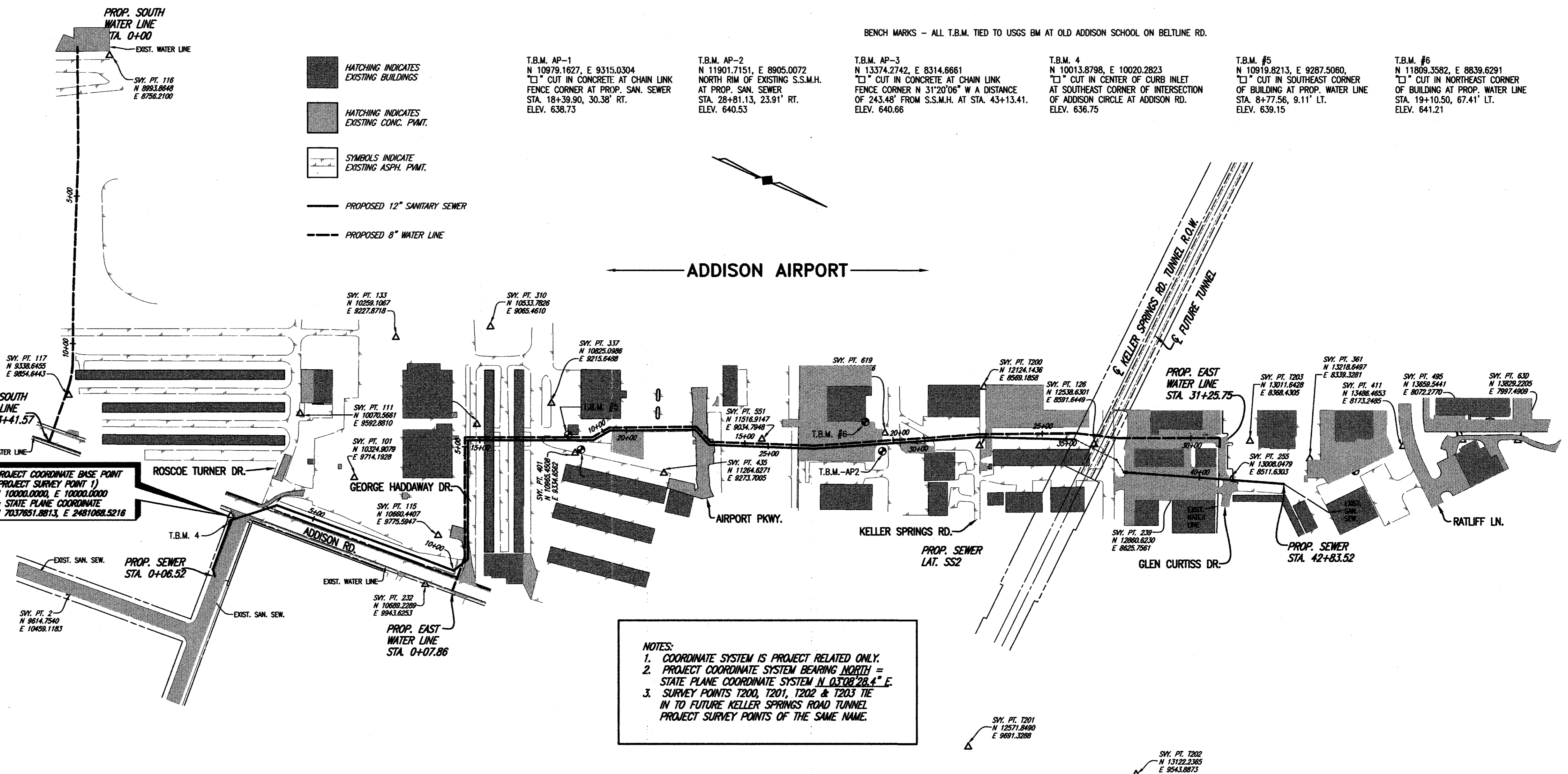


GENERAL NOTES

(NOTES APPLY TO ALL SHEETS)

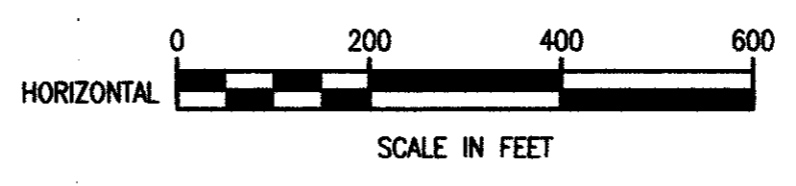
- REASONABLE EFFORT HAS BEEN MADE TO SHOW THE LOCATION OF ALL KNOWN UNDERGROUND UTILITIES AND SERVICE LINES. HOWEVER, THE OWNER ASSUMES NO RESPONSIBILITY FOR FAILURE TO SHOW ANY OR ALL EXISTING SUBSURFACE OR SURFACE UTILITIES OR UTILITY LINES, OR TO SHOW THEM IN THEIR EXACT LOCATION. THE CONTRACTOR SHALL BE RESPONSIBLE FOR THE PROTECTION OF ALL EXISTING UTILITIES, SERVICE LINES, OR THE LIKE, WHICH ARE CROSSED OR EXPOSED BY THE CONSTRUCTION OPERATION.
- CONTRACTOR SHALL NOTIFY UTILITY COMPANIES 72 HOURS PRIOR TO CONSTRUCTION
 - T.U. ELECTRIC
 - GENERAL TELEPHONE (G.T.E.)
 - LONG STAR GAS
 - CABLE TELEPHONE
 - T.C.I. CABLE TV
- ALL PAVEMENT SHALL BE SAWCUT FOR TRENCHES. SAWCUTS SHALL BE FULL DEPTH.
- ALL WYES, STACKS AND PIPE SERVICE CONNECTIONS SHALL BE P.V.C. (SDR-35).
- ALL CONCRETE PAVEMENT (ROADWAYS, CURB & GUTTERS, DRIVES, AND SIDEWALKS, ETC.) SHALL HAVE BE FULL DEPTH SAWCUT. 18 INCH LONG NO. 4 DOWELS SHALL BE DRILLED INTO EXISTING PAVEMENT. CONTRACTOR SHALL UTILIZE A DRILLING RIG TO DRILL HOLES FOR DOWEL BARS. CONTRACTOR SHALL UTILIZE PROPER BITS AND PRESSURE, AS NOT TO DAMAGE EXISTING CONCRETE. CONTRACTOR SHALL BE RESPONSIBLE FOR ALL DAMAGED PAVEMENT AND REPAIR AT HIS OWN COST.
- ALL MANHOLE/PIPE CONNECTIONS SHALL INCLUDE A COUPLING WITH O-RING RUBBER GASKET, KOR-N-SEAL, A-LOK OR APPROVED EQUAL.
- THE CONTRACTOR SHALL PROTECT ALL UNDERGROUND SPRINKLER SYSTEMS. ALL DAMAGES CAUSED BY CONSTRUCTION SHALL BE REPAIRED BY A IRRIGATOR LICENSED IN THE STATE OF TEXAS. ALL COST SHALL BORNE BY THE CONTRACTOR.
- CONTRACTOR SHALL HAVE UTILITY COMPANIES SUPPORT AND PROTECT OR RELOCATE THEIR UTILITY POLES, GUY WIRES OR CABLE AND/OR LIGHT POLES IN WORK AREA. COST SHALL BE SUBSIDIARY TO THE CONTRACT.
- ALL ROADWAYS/ TAXWAYS, ETC. SHALL REMAIN OPEN DURING CONSTRUCTION. AT LEAST ONE WAY TRAFFIC (USING A FLAGMAN OR OTHER MEANS) SHALL BE AVAILABLE DURING WORKING HOURS. AFTER HOURS, TWO WAY TRAFFIC MUST BE MAINTAINED.
- THE CONTRACTOR SHALL REPLACE ALL SHRUBS, PLANTS, TREES, ETC. THAT ARE REMOVED FOR THE COMMENCEMENT OF CONSTRUCTION AT HIS EXPENSE. NEW SHRUBS, PLANTS, TREES, ETC. SHALL BE EQUAL TO OR BETTER THAN EXISTING ONES OR MEET THE NEEDS OF THE PROPERTY OWNER.
- THE CONTRACTOR SHALL RESTORE ALL EXISTING LANDSCAPING AND VEGETATION ALONG THE CONSTRUCTION ROUTE TO ITS ORIGINAL CONDITION AFTER COMPLETION OF CONSTRUCTION.
- PRIOR TO CONSTRUCTION OF MAIN SEWER LINES, THE CONTRACTOR SHALL LOCATE AND UNCOVER ALL SERVICE LINES AND VERIFY THAT EACH CAN BE CONNECTED TO THE PROPOSED MAIN LINE.
- PRECAST MANHOLES ARE NOT ACCEPTABLE. ALL MANHOLES SHALL BE CAST IN PLACE.
- ALL WATER VALVES SHALL BE RESILIENT SEATED WEDGE GATE VALVES.
- EXISTING FIRE HYDRANTS, VALVES AND VALVE STACKS CALLED OUT IN PLANS TO BE REMOVED SHALL BE DISPOSED OF BY THE CONTRACTOR.
- ALL FENCES WHICH ARE REMOVED FOR THE COMMENCEMENT OF CONSTRUCTION SHALL BE REPLACED OR RECONSTRUCTED. ALL POSTS SHALL BE SET IN CONCRETE AND ALL TIES SHALL BE NEW. ALL CONCRETE MOW STRIPS SHALL BE RECONSTRUCTED W/ #3 DEFORMED BARS.
- CONTRACTOR SHALL ABANDON EXISTING SEWER MANHOLES AS SHOWN IN THE PLANS. PAY ITEM FOR ABANDONING AN EXISTING MANHOLE SHALL INCLUDE PLACING 2000 P.S.I. CONCRETE (N.C.T.C.O.G. CLASS "B") 12 INCHES ABOVE THE SPRING LINE OF THE HIGHEST PIPE, AND BACKFILLING AND COMPACTING THE MANHOLE IN 6 INCH LIFTS WITH EXCAVATED OR IMPORTED MATERIAL. REMOVE RING, COVER AND CONE. BACKFILL TOP 12 INCHES UNDER PAVEMENT STRUCTURE WITH SAND. IN OPEN AREAS, BACKFILL TOP 12 INCHES WITH IMPORTED TOPSOIL AND SOLID SOD.
- ALL EXISTING SEWER LINES WHICH ARE TO BE PLUGGED SHALL BE PLUGGED WITH A MINIMUM OF 18 INCHES OF 2000 P.S.I. GROUT (N.C.T.C.O.G. CLASS "B"). THE 18 INCHES OF SEWER LINE TO BE PLUGGED SHALL BE WIRE BRUSHED CLEANED PRIOR TO PLACEMENT OF GROUT.
- ALL CHANGES OF DIRECTION OF THE PROPOSED WATER LINE SHALL BE MARKED ON THE SURFACE. PAVEMENT SHALL BE MARKED WITH PERMANENT MARKERS MANUFACTURED BY D.A.S. MANUFACTURING, INC. OF VALRICO, FLORIDA (813-681-6024). THE MARKER SHALL BE BLUE WITH THE WORD "WATER" AND AN ARROW(S) FOR THE DIRECTION(S) OF THE LINE.
- ALL WATER SERVICES SHALL INCLUDE AN U.S.C. APPROVED DOUBLE CHECK VALVE ASSEMBLY UPSTREAM OF METER. EACH SHALL BE SET IN ITS OWN VALVE OR METER BOX.
- ALL GRASS DISTURBED ALONG PROJECT SHALL BE REPLACED WITH SOLID SOD PLACED END TO END. CONTRACTOR SHALL WATER SOD TWICE A DAY FOR A PERIOD OF SIX WEEKS. WATERING SHALL BE ACCOMPLISHED BY USE OF A WATER TRUCK.
- ALL EXISTING AND NEW FIRE HYDRANTS NOT ACTIVE SHALL HAVE OUT OF SERVICE MARKERS PLACED ON TWO NOZZLES. MARKERS SHALL BE FROM HYDRA-SHIELD MANUFACTURING 1-800-676-0911 OR EQUAL. THE COLOR SHALL BE RED.
- FINAL LOCATION OF WATER METER AND DOUBLE CHECK VALVE ASSEMBLY SHALL BE DETERMINED IN THE FIELD BY THE TOWN OF ADDISON.
- ALL PAVEMENT CUTS SHALL BE COMPLETED UTILIZING FULL DEPTH SAW CUT. PROPOSED CONCRETE PAVEMENT SHALL BE DOWELED INTO EXIST. CONCRETE PAVEMENT (SEE LONGITUDINAL BUTT JOINT DETAIL).
- ALL PAVEMENT REMOVAL AND REPLACEMENT IS SHOWN IN THE PROFILE. SEE SHEET 21 FOR PAVEMENT DETAILS.

SPECIAL NOTE TO CONTRACTOR:
 ALL PROPOSED MANHOLES SHALL INCLUDE INTERNAL MANHOLE CHIMNEY SEAL AS MANUFACTURED BY CRETEX SPECIALTY PRODUCTS (OF WAUKESHA, WI) OR APPROVED EQUAL. THEY SHALL ALSO INCLUDE A RAINTOPPER AS MANUFACTURED BY SOUTHWESTERN PACKING & SEALS (OF SHREVEPORT, LA) OR APPROVED EQUAL.



NOTES:
 1. COORDINATE SYSTEM IS PROJECT RELATED ONLY.
 2. PROJECT COORDINATE SYSTEM BEARING NORTH = STATE PLANE COORDINATE SYSTEM AL 0308'28.4" E.
 3. SURVEY POINTS 1200, 1201, 1202 & 1203 TIE IN TO FUTURE KELLER SPRINGS ROAD TUNNEL. PROJECT SURVEY POINTS OF THE SAME NAME.

HORIZONTAL CONTROL PLAN



SUMMARY OF ABBREVIATIONS AND DEFINITIONS

GENERAL TOPOGRAPHY & HORIZONTAL/ VERTICAL CONTROL				TREES & BUSHES	
ABBREVIATION	DEFINITION	ABBREVIATION	DEFINITION	ABBREVIATION	DEFINITION
B.C.	BACK OF CURB	P.C.	POINT OF CURVATURE	B.D.	BOS D'ARC TREE
E	CENTERLINE	P.I.	POINT OF INTERSECTION	B.T.	BLACK THORN TREE
C.M.A.P.	CORRUGATED METAL ARCH PIPE	E	PROPERTY LINE	C.B.	CHINABERRY TREE
C.M.P.	CORRUGATED METAL PIPE	P.P.	POWER POLE	CDR.	CEDAR TREE
C.I.	CAST IRON	P.R.C.	POINT OF REVERSE CURVATURE	C.E.	CEDAR ELM TREE
C.O.	CLEANOUT	P.T.	POINT OF TANGENCY	C.M.	CRAPE MYRTLE TREE
CONN.	CONNECTION	P.V.C.	PLASTIC PIPE	C.P.	CHINESE PISTACHIO TREE
CULV.	CULVERT	P.V.I.	POINT OF VERTICAL INTERSECTION	C.W.	COTTONWOOD TREE
D.I.P.	DUCTILE IRON PIPE	R.C.	RADIUS	CYP.	CYPRESS TREE
EL	ELEVATION	R.C.	REINFORCED CONCRETE	H.B.	HACKBERRY TREE
ELEC.	BURIED ELECTRICAL POWER LINE	R.C.P.	REINFORCED CONCRETE PIPE	HICK.	HICKORY TREE
ENC.	ENCASEMENT	R.O.W.	RIGHT OF WAY	H.T.	HAWTHORN TREE
E.P.	EDGE OF PAVEMENT	SAN. SEW. OR S.S.	SANITARY SEWER	LG.	LIGUSTRUM BUSH
ESMT.	EASEMENT	S.H.	LAWN SPRINKLER HEAD	L.O.	LIVE OAK TREE
F.-F.	FACE TO FACE	S.S.	SANITARY SEWER	LOC.	LOCUST TREE
F.H.	FIRE HYDRANT	S.S.M.H.	SANITARY SEWER MANHOLE	MAG.	MAGNOLIA TREE
F.M.	FLOW LINE	ST. SEW.	STORM SEWER	MAP.	MAPLE TREE
F.L.	FLOW LINE	S.V.B.	LAWN SPRINKLER VALVE BOX	MSQ.	MESQUITE TREE
G.L.M.	GAS LINE MARKER	T.B.	TELEPHONE CABLE BOX	MIM.	MIMOSA TREE
G.M.	GAS METER	T.C.	TOP OF CURB	MUL.	MULBERRY TREE
G.V.	GAS VALVE	TEL.	BURIED TELEPHONE CABLE	NAN.	NANDENA BUSH
GUT.	GUTTER	T.M.H.	TELEPHONE CABLE MANHOLE	PEC.	PECAN TREE
HOWL.	HEADWALL	T.O.F.	TO FACE (OF CURB)	PER.	PERSIMMON TREE
I.P.F. OR I.R.F.	IRON PIN (ROD) FOUND	T.V.	BURIED TELEVISION CABLE	PHOT.	RED TIPPED PHOTINIA BUSH
LL	LANDSCAPING LIGHT	U.G.C.M.	UNDERGROUND CABLE MARKER	R.B.	REDBUD TREE
L.P.	LIGHT POLE	U.P.M.	UNDERGROUND PIPELINE MARKER	R.O.	RED OAK TREE
L.S.	SANITARY SEWAGE LIFT STATION	V.C.	VERTICAL CURVE	S.G.	SWEET GUM TREE
L.S.T.	LANDSCAPING TIMBERS	W. OR W.L.	WATER LINE	SYC.	SYCAMORE TREE
M.B.	MAILBOX	W.M.	WATER METER	WIL.	WILLOW TREE
M.H.	MANHOLE	W.V.	WATER VALVE		

REVISED TO CONFORM TO CONSTRUCTION RECORDS BY J.W.B. DATE 12/07/98

THESE DOCUMENTS ARE FOR BIDDING, CONSTRUCTION, AND PERMIT PURPOSES.
 DATE: 9/5/97



TOWN OF ADDISON, TEXAS
 ADDISON AIRPORT SANITARY SEWER & WATER MAIN REPLACEMENT
GENERAL NOTES & HORIZONTAL CONTROL
 SHIMEK, JACOBS & FINKLEA, L.L.P.
 CONSULTING ENGINEERS
 Dallas, Texas

DESIGNED BY: S.J. & F. PROJECT: 96 169 SHEET NO. 1
 DRAWN BY: S.J. & F. DATE: FEBRUARY 1997 OF 24 SHEETS