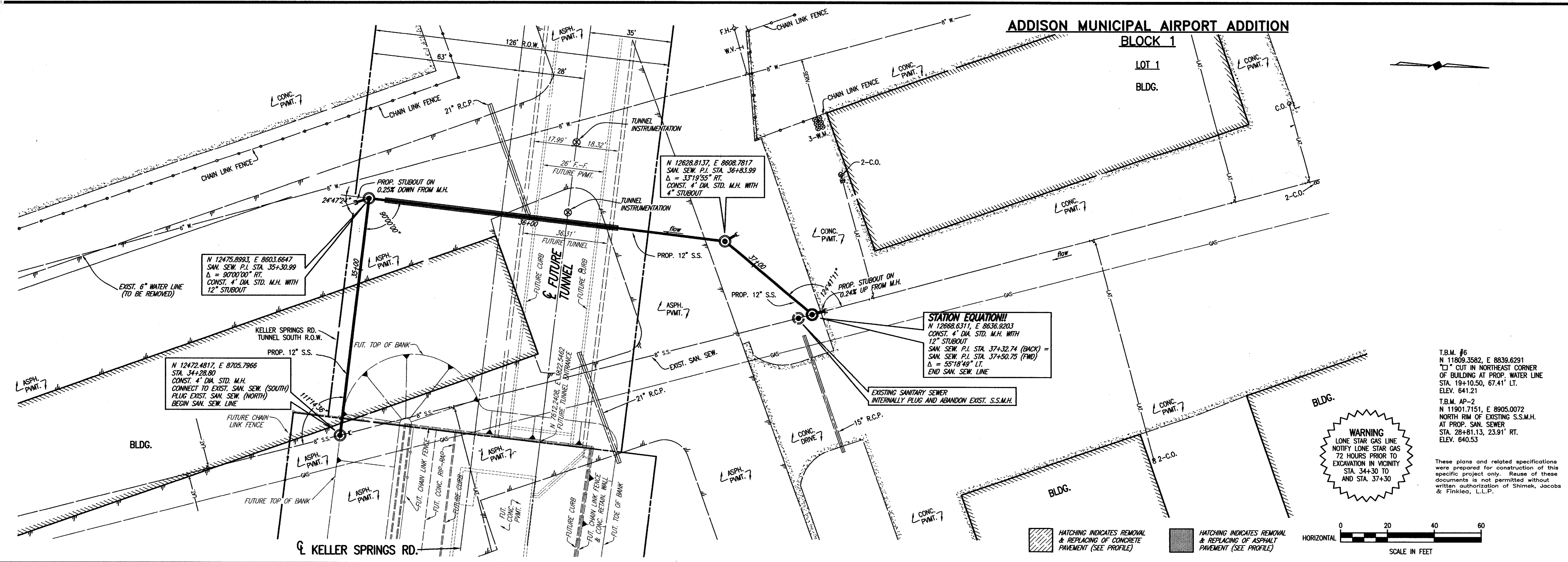


**ADDISON MUNICIPAL AIRPORT ADDITION**

**BLOCK 1**

LOT 1

BLDG.



N 12475.8993, E 8603.6647  
STA. 34+28.80  
Δ = 90°00'00" RT.  
CONST. 4" DIA. STD. M.H. WITH  
12" STUBOUT

N 12472.4817, E 8705.7966  
STA. 34+28.80  
CONST. 4" DIA. STD. M.H.  
CONNECT TO EXIST. SAN. SEW. (SOUTH)  
PLUG EXIST. SAN. SEW. (NORTH)  
BEGIN SAN. SEW. LINE

N 12628.8137, E 8608.7817  
SAN. SEW. P.I. STA. 36+83.99  
Δ = 33°19'55" RT.  
CONST. 4" DIA. STD. M.H. WITH  
4" STUBOUT

**STATION EQUATION!!**  
N 12668.6311, E 8636.9203  
CONST. 4" DIA. STD. M.H. WITH  
12" STUBOUT  
SAN. SEW. P.I. STA. 37+32.74 (BACK) =  
SAN. SEW. P.I. STA. 37+50.75 (FWD)  
Δ = 55°18'49" LT.  
END SAN. SEW. LINE

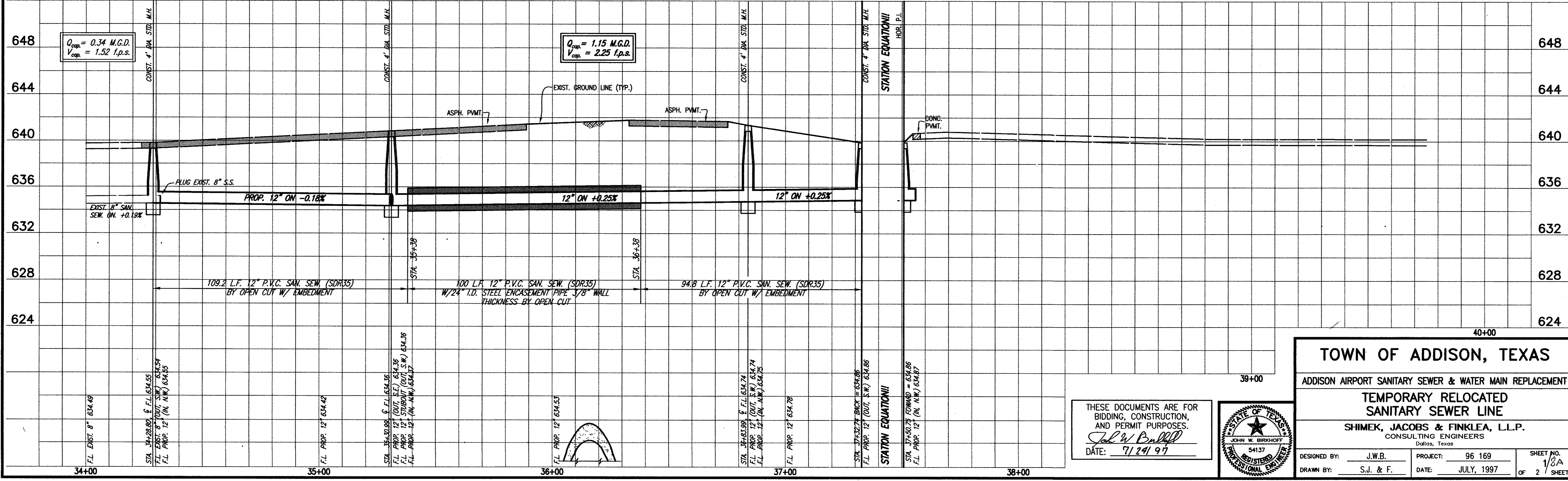
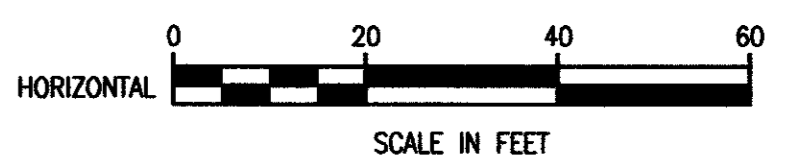
**WARNING**  
LONE STAR GAS LINE  
NOTIFY LONE STAR GAS  
72 HOURS PRIOR TO  
EXCAVATION IN VICINITY  
STA. 34+30 TO  
AND STA. 37+30

T.B.M. #6  
N 11809.3582, E 8839.6291  
"C" CUT IN NORTHEAST CORNER  
OF BUILDING AT PROP. WATER LINE  
STA. 19+10.50, 67.41' LT.  
ELEV. 641.21  
T.B.M. AP-2  
N 11901.7151, E 8905.0072  
NORTH RIM OF EXISTING S.S.M.H.  
AT PROP. SAN. SEWER  
STA. 28+81.13, 23.91' RT.  
ELEV. 640.53

These plans and related specifications were prepared for construction of this specific project only. Reuse of these documents is not permitted without written authorization of Shimek, Jacobs & Finklea, L.L.P.

HATCHING INDICATES REMOVAL & REPLACING OF CONCRETE PAVEMENT (SEE PROFILE)

HATCHING INDICATES REMOVAL & REPLACING OF ASPHALT PAVEMENT (SEE PROFILE)



**TOWN OF ADDISON, TEXAS**

ADDISON AIRPORT SANITARY SEWER & WATER MAIN REPLACEMENT

**TEMPORARY RELOCATED  
SANITARY SEWER LINE**

SHIMEK, JACOBS & FINKLEA, L.L.P.  
CONSULTING ENGINEERS  
Dallas, Texas

DESIGNED BY: J.W.B. PROJECT: 96 169 SHEET NO. 1/8A  
DRAWN BY: S.J. & F. DATE: JULY, 1997 OF 2 SHEETS

THESE DOCUMENTS ARE FOR BIDDING, CONSTRUCTION, AND PERMIT PURPOSES.  
DATE: 7/24/97

STATE OF TEXAS  
JOHN W. BIRKHOFF  
REGISTERED PROFESSIONAL ENGINEER  
54137