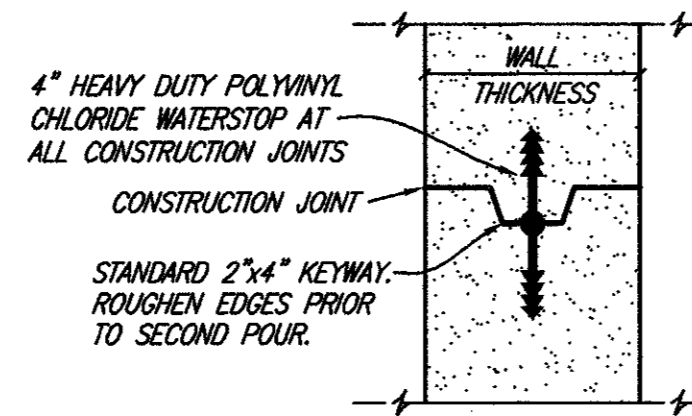
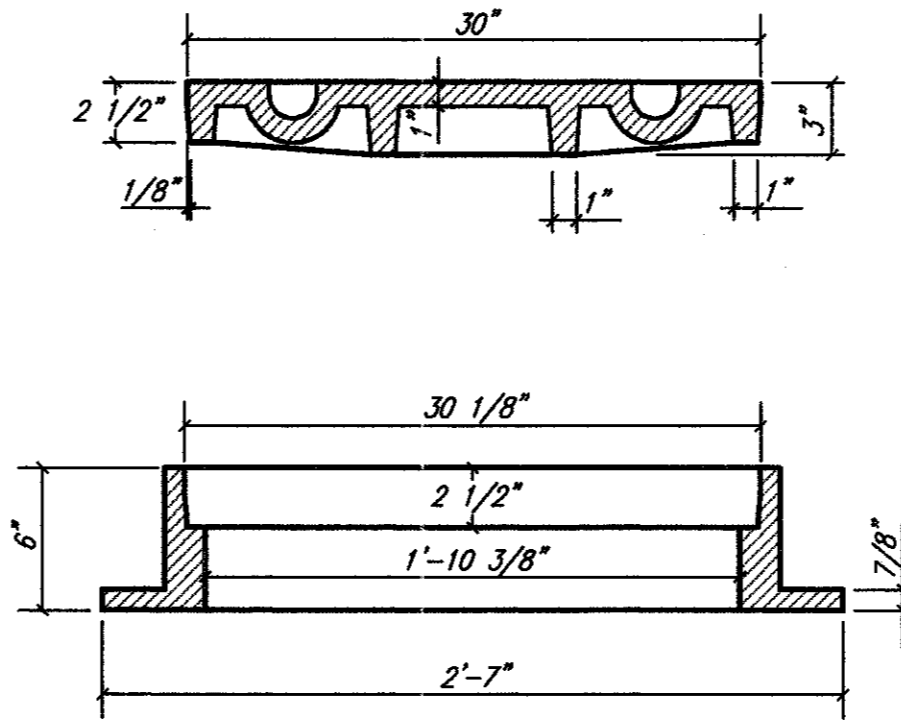
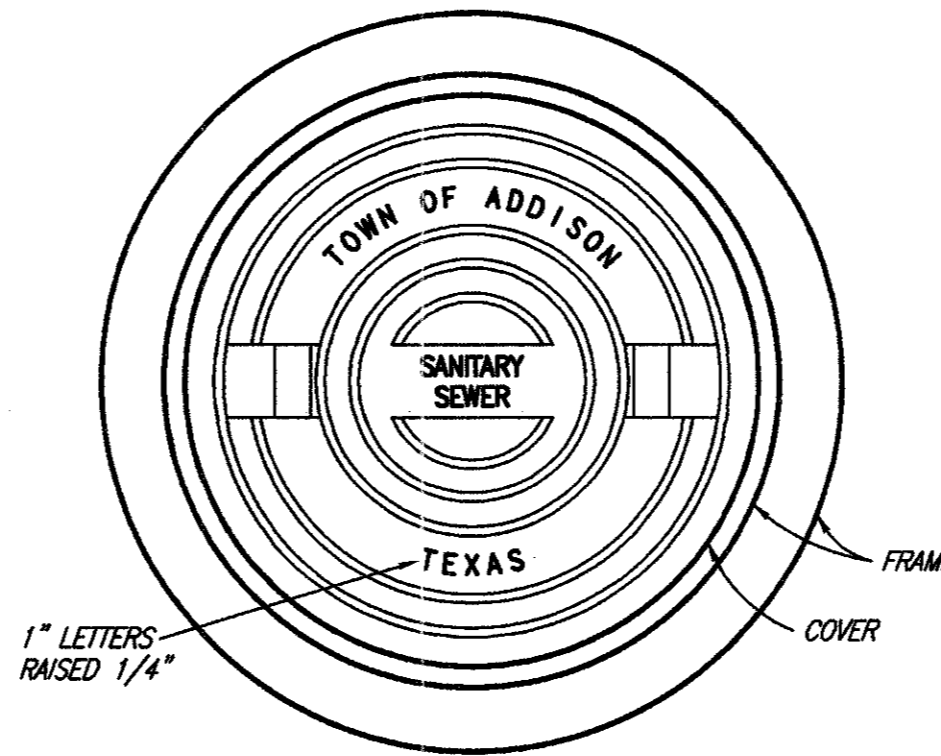


CONE TRANSITION
5' & 6' DIAMETER MANHOLES ONLY

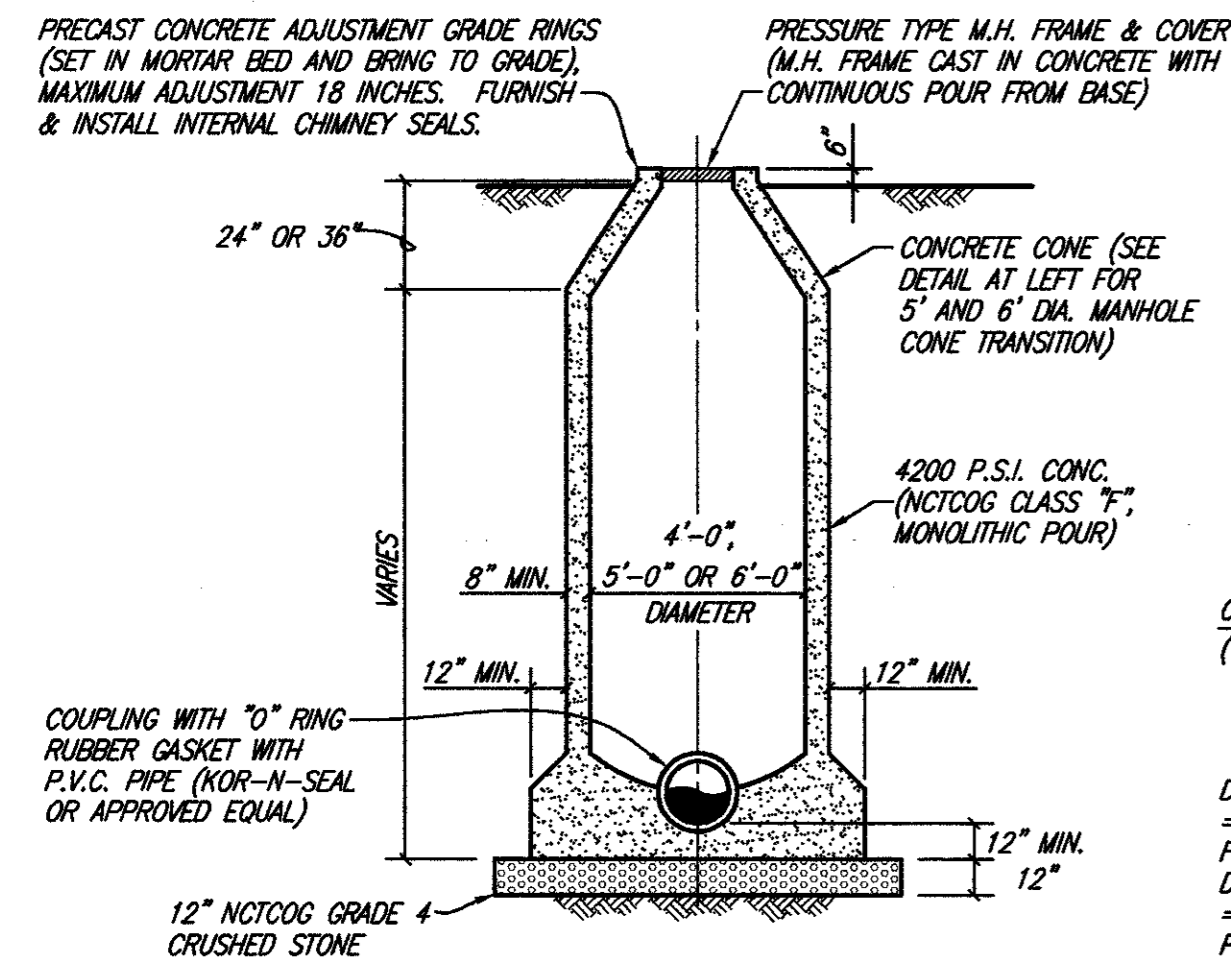


MANHOLE CONSTRUCTION JOINT
KEYWAY WITH WATERSTOP

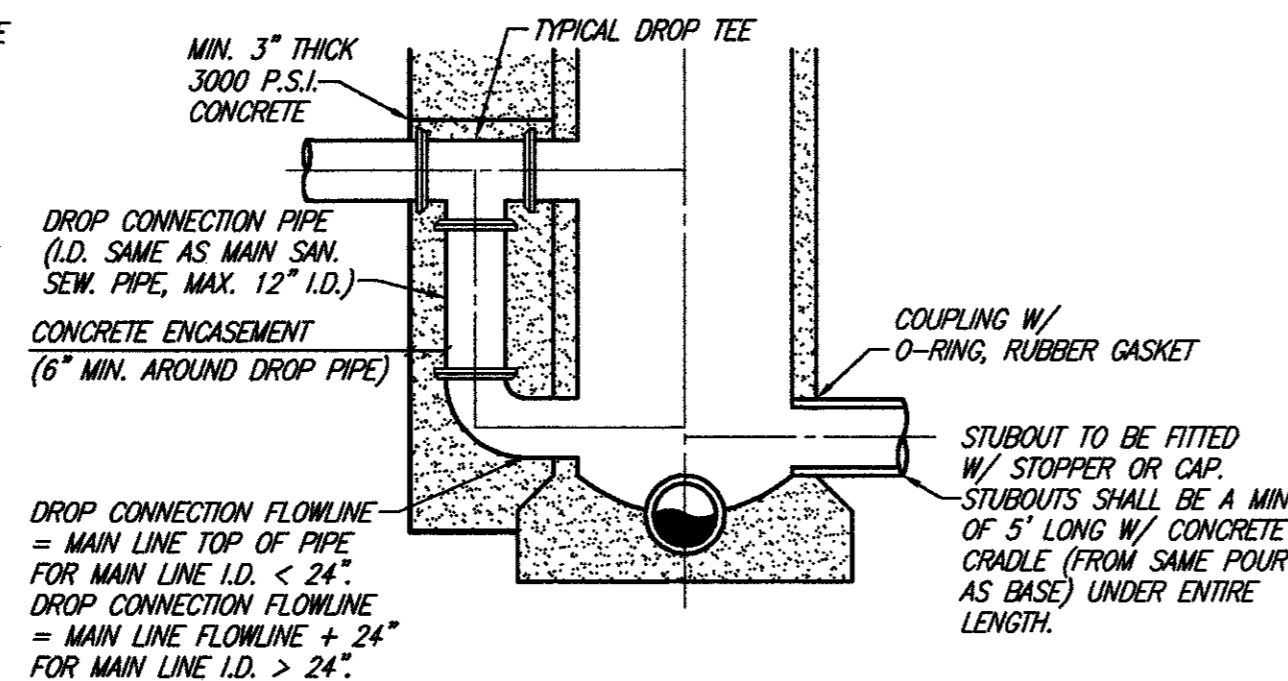


MANHOLE RING AND COVER
NO SCALE

NOTE:
ASSEMBLY SHALL BE BASS & HAYS
MODEL 400-24 (W/ PICK SLOTS)
OR EQUAL (TOTAL WEIGHT ___ LBS.)



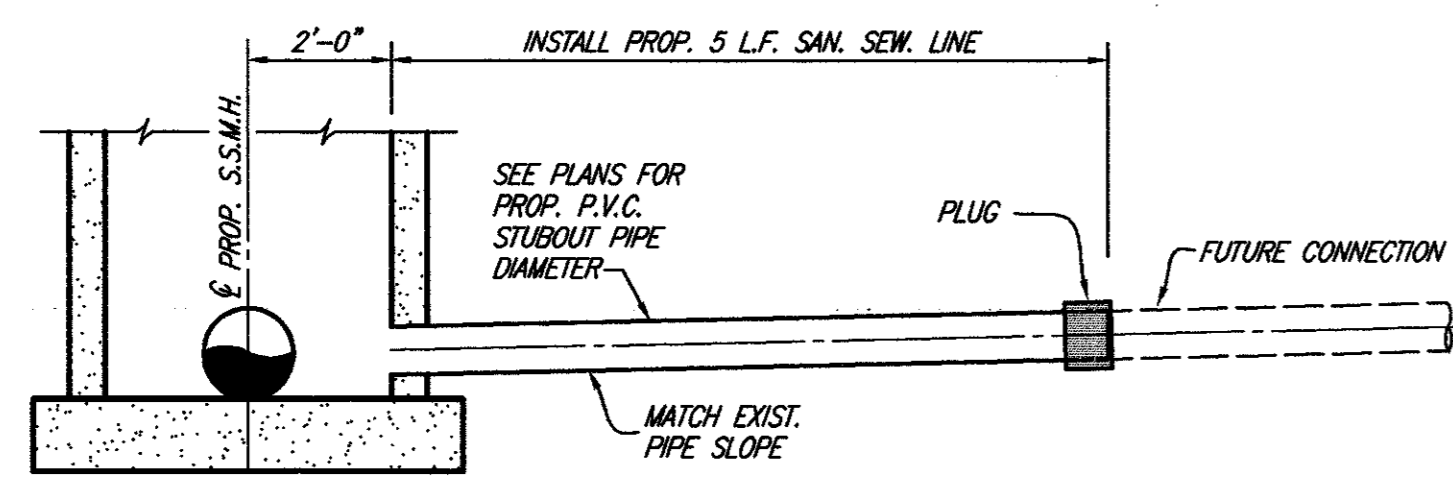
STANDARD MANHOLE ELEVATION
4', 5' & 6' DIAMETER MANHOLES



DROP MANHOLE ELEVATION
4', 5' & 6' DIAMETER MANHOLES

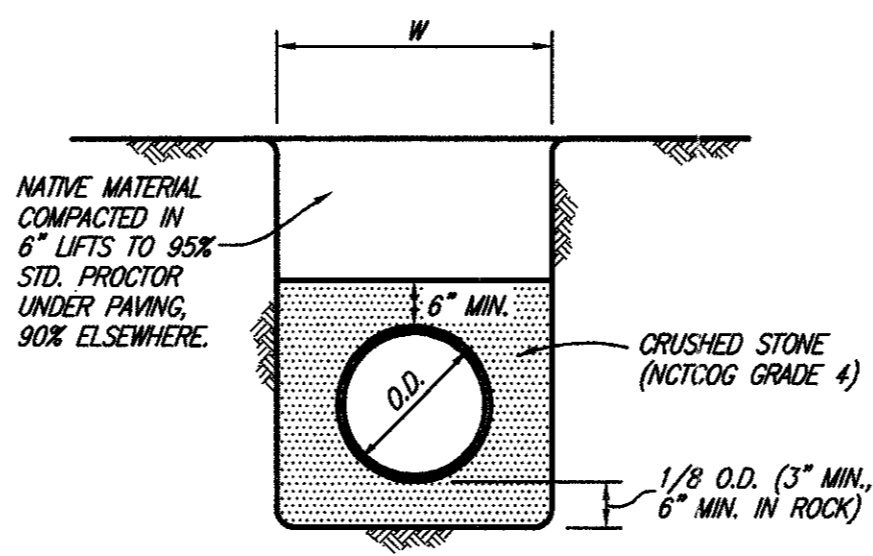
SANITARY SEWER MANHOLE (CAST IN PLACE)

PRECAST MANHOLES NOT ACCEPTABLE IN ADDISON. MANHOLES SHALL BE PLUMB TO WITHIN 1 INCH FOR EVERY 5 FEET OF VERTICAL DEPTH.
NO SCALE



STUBOUT & PLUG FOR FUTURE CONNECTIONS
NO SCALE

NOTE:
MATCH SOFFITS UPSTREAM OF MANHOLE
MATCH FLOWLINES DOWNSTREAM OF MANHOLE



CLASS H EMBEDMENT

P.V.C. PIPE ONLY
STD. P.V.C. SEWER

These plans and related specifications were prepared for construction of this specific project only. Reuse of these documents is not permitted without written authorization of Shimek, Jacobs & Finklea, L.L.P.

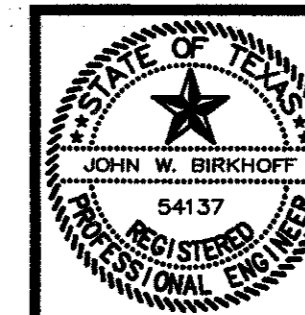
TOWN OF ADDISON, TEXAS

ADDISON AIRPORT SANITARY SEWER & WATER MAIN REPLACEMENT

STANDARD DETAILS

SHIMEK, JACOBS & FINKLEA, L.L.P.
CONSULTING ENGINEERS
Dallas, Texas

THESE DOCUMENTS ARE FOR BIDDING, CONSTRUCTION, AND PERMIT PURPOSES.
John W. Bullard
DATE: 7/24/97



DESIGNED BY: S.J. & F.	PROJECT: 96 169	SHEET NO. 2
DRAWN BY: S.J. & F.	DATE: JULY 1997	OF 2 SHEETS