

NOTES: 1. ALL DISTURBED AREAS SHALL BE RESTORED WITH SOLID SOD PLACED END TO END AND SIDE TO SIDE. CONTRACTOR SHALL WATER SOD ONCE A DAY FOR TWO WEEKS.
 2. CONTRACTOR SHALL HAVE THE OPTION TO OPEN CUT THE ROADWAY DURING NIGHT TIME HOURS OR TO BORE UNDER THE ROADWAY.

QUANTITIES		
1. 8 INCH SANITARY SEWER LINE	360	L.F.
2. STANDARD 4 FOOT DIA. MANHOLE	1	EA.
3. ONE-WAY CLEANOUT	2	EA.
4. 8 INCH x 8 INCH TEE	1	EA.
5. CONNECTION TO EXIST. SAN. SEW. LINE	1	S.F.
6. SOLID SOD	1300	S.F.
7. ROADWAY CROSSING	1	L.S.
8. FENCE REMOVAL & REPLACEMENT	1	L.S.
9. DRIVEWAY REMOVAL & REPLACEMENT	13.2	S.Y.
10. 15 INCH R.C.P. REMOVAL & REPLACEMENT	28	L.F.
11. CONCRETE RIP RAP & HEADWALL REMOVAL & REPLACEMENT	1	L.S.

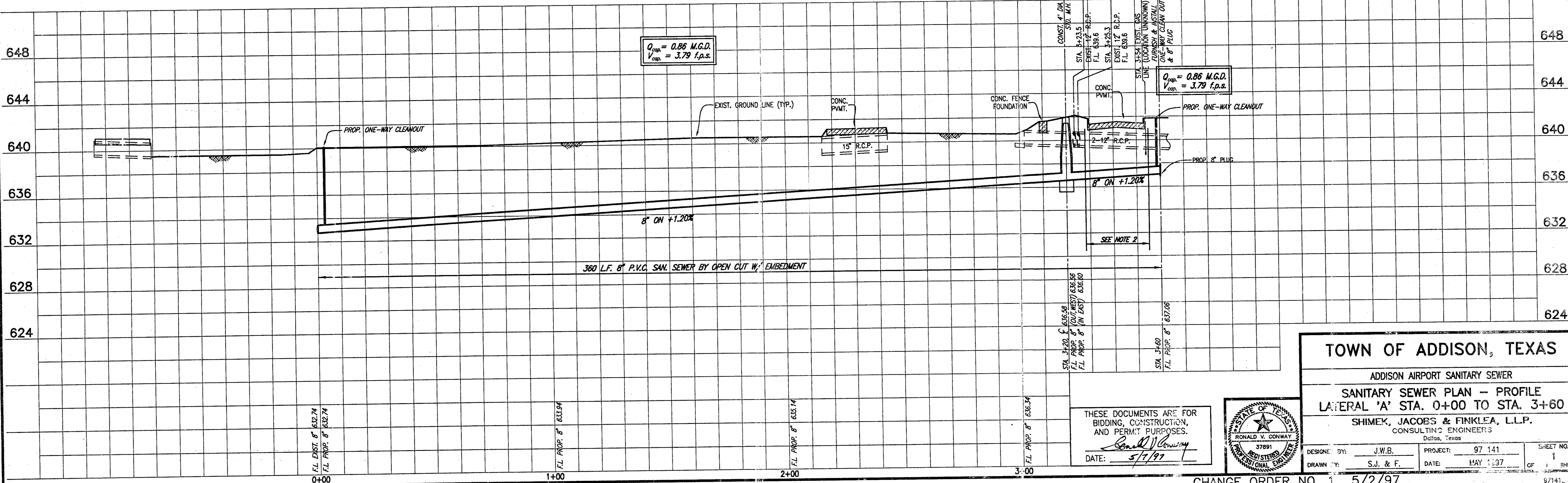
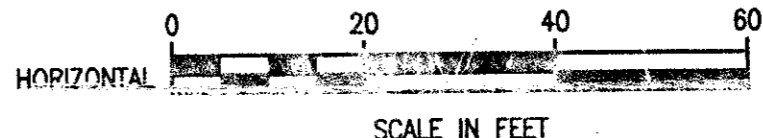
**ADDISON MUNICIPAL AIRPORT ADDITION
BLOCK 1**

LOT 1

T.B.M. #6
 N 11809.3582, E 8839.6291
 "C" CUT IN NORTHEAST CORNER OF BUILDING AT PROP. WATER LINE STA. 19+0.50, 67.41' LT. ELEV. 641.21
 T.B.M. AP-2
 N 11901.7151, E 8905.0072
 NORTH 1/4 OF EXISTING S.S.M.H. AT PROP. SAN. SEWER STA. 26+51.13, 23.91' RT. ELEV. 640.53

These plans and related specifications were prepared for construction of this specific project only. Review of these documents is not permitted without written authorization of Shimek, Jacobs & Finklea, L.L.P.

HATCHING INDICATES REMOVAL & REPLACING OF CONCRETE PAVEMENT (SEE PROFILE)

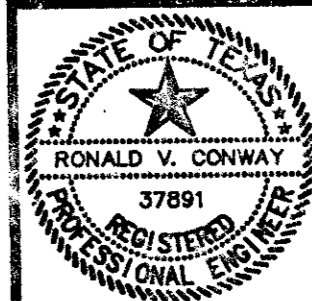


$Q_{cap} = 0.86$ M.G.D.
 $V_{cap} = 3.79$ f.p.s.

$Q_{cap} = 0.86$ M.G.D.
 $V_{cap} = 3.79$ f.p.s.

TOWN OF ADDISON, TEXAS
 ADDISON AIRPORT SANITARY SEWER
 SANITARY SEWER PLAN - PROFILE
 LATERAL 'A' STA. 0+00 TO STA. 3+00
 SHIMEK, JACOBS & FINKLEA, L.L.P.
 CONSULTING ENGINEERS
 Dallas, Texas

DESIGNED BY: J.W.B. PROJECT: 97 141 SHEET NO. 1
 DRAWN BY: S.J. & F. DATE: MAY 1997 OF 1



THESE DOCUMENTS ARE FOR BIDDING, CONSTRUCTION, AND PERMIT PURPOSES.
 DATE: 5/1/97

CHANGE ORDER NO. 1 5/2/97

B15-4