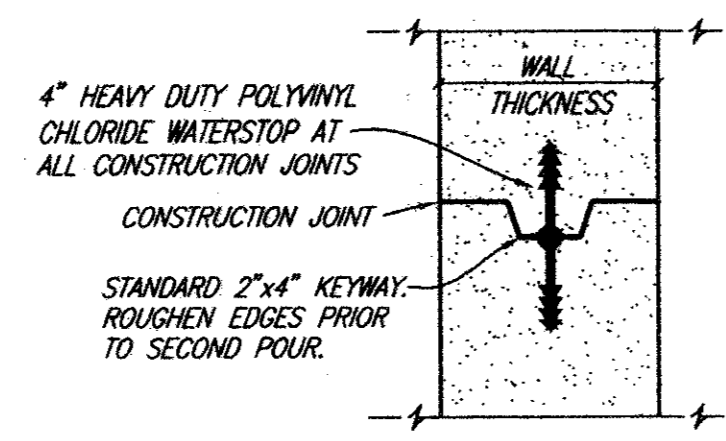
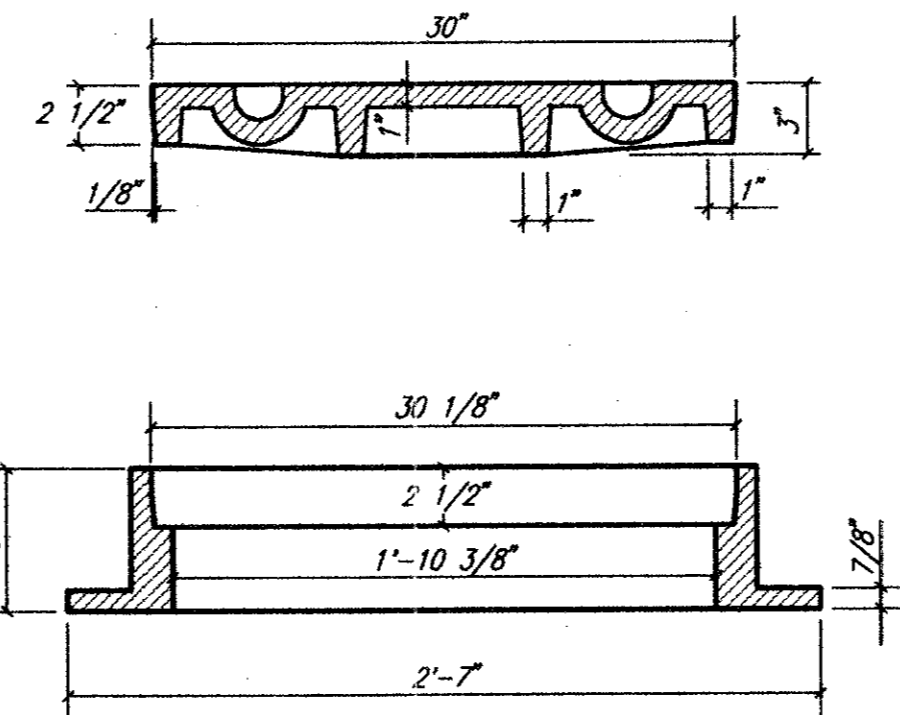
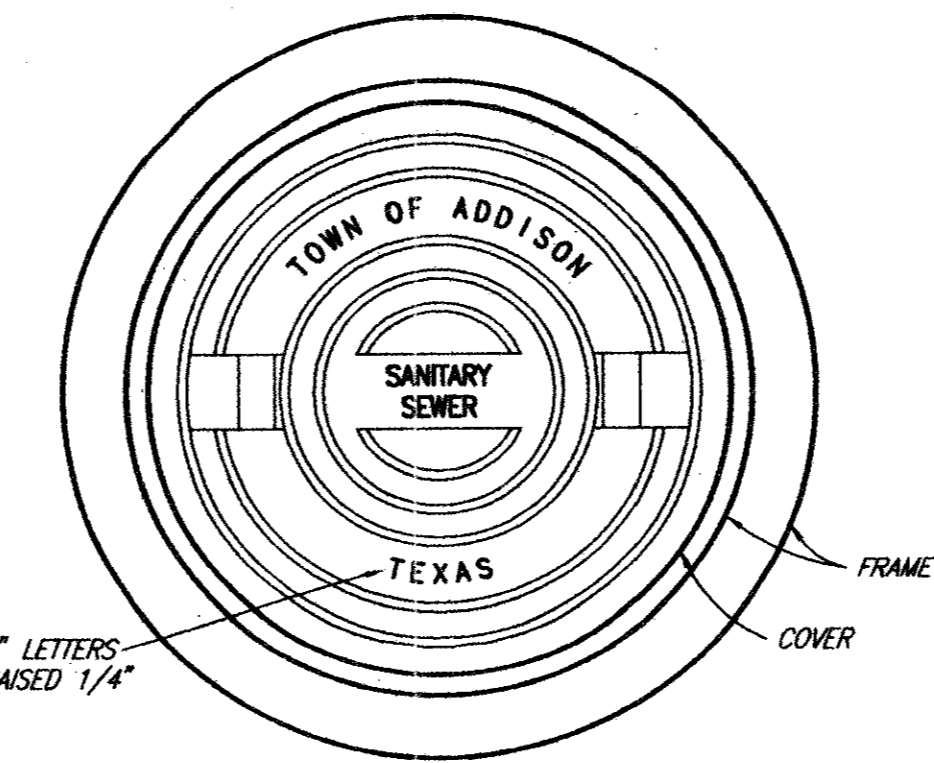


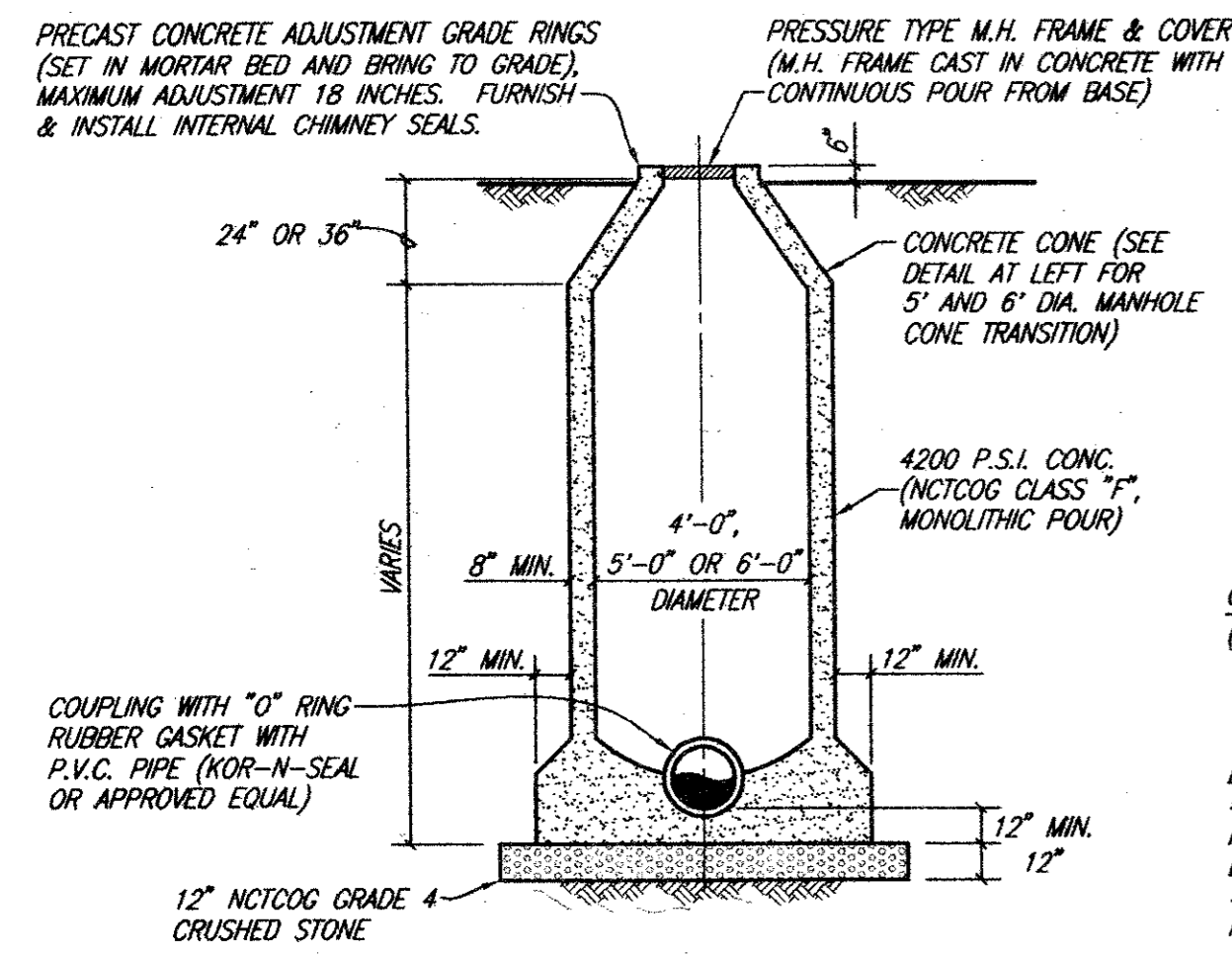
**CONE TRANSITION**  
5' & 6' DIAMETER MANHOLES ONLY



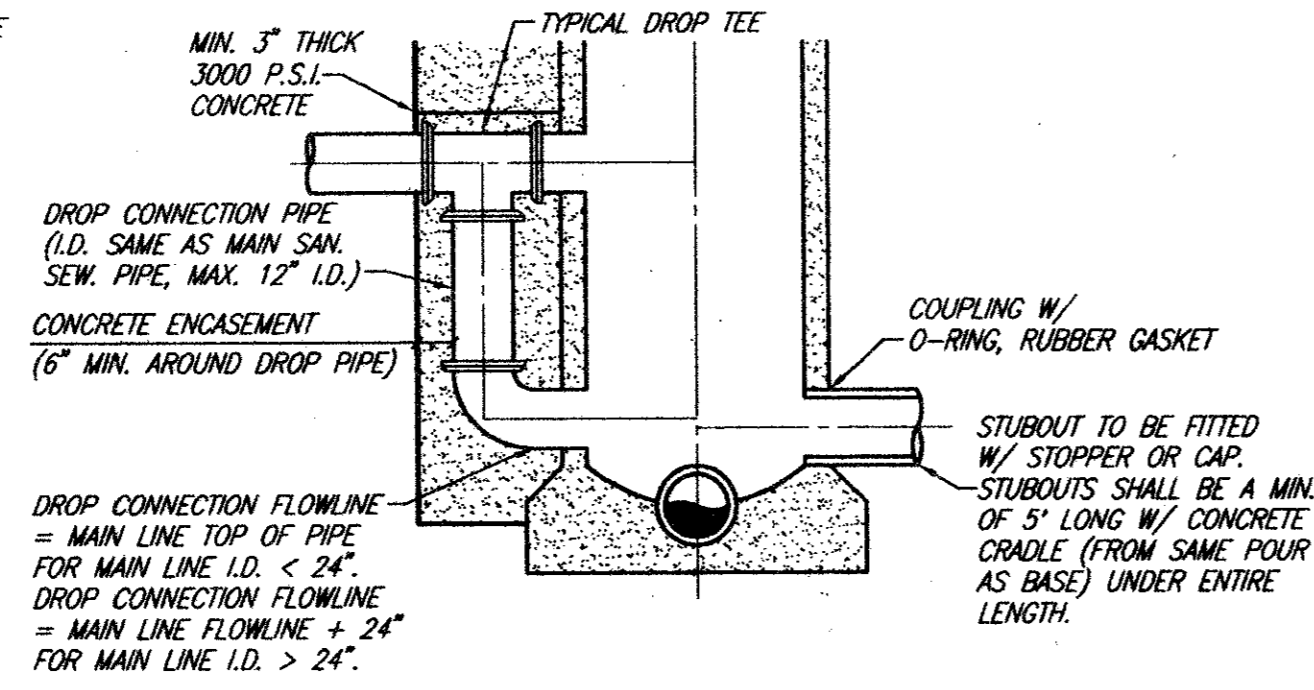
**MANHOLE CONSTRUCTION JOINT**  
KEYWAY WITH WATERSTOP



**MANHOLE RING AND COVER**  
NO SCALE



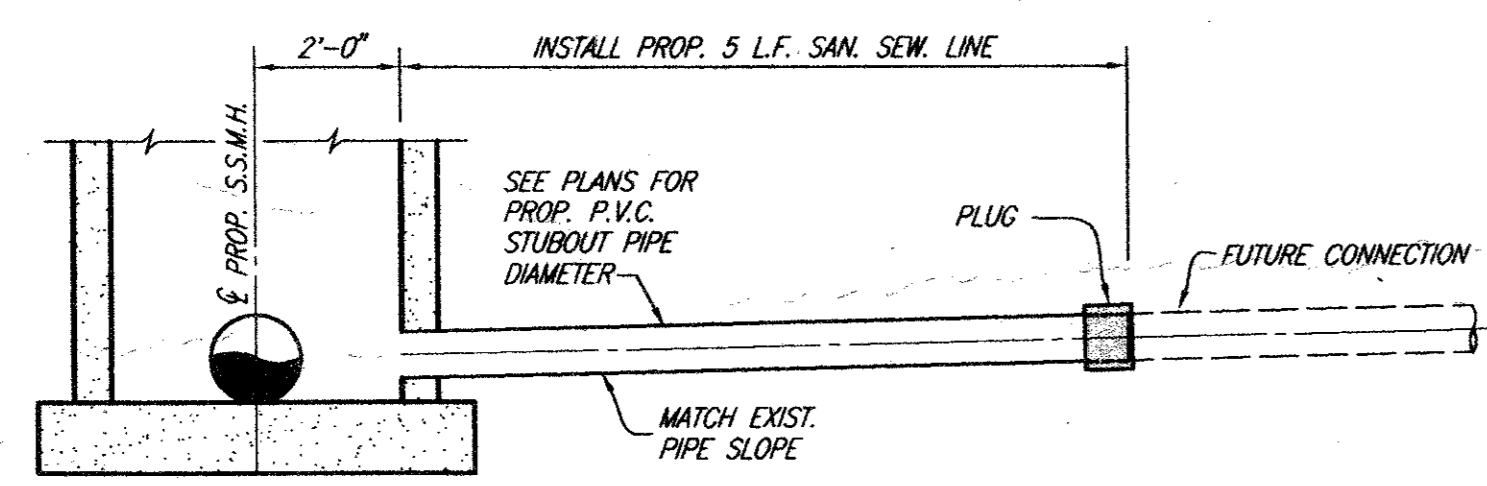
**STANDARD MANHOLE ELEVATION**  
4', 5' & 6' DIAMETER MANHOLES



**DROP MANHOLE ELEVATION**  
4', 5' & 6' DIAMETER MANHOLES

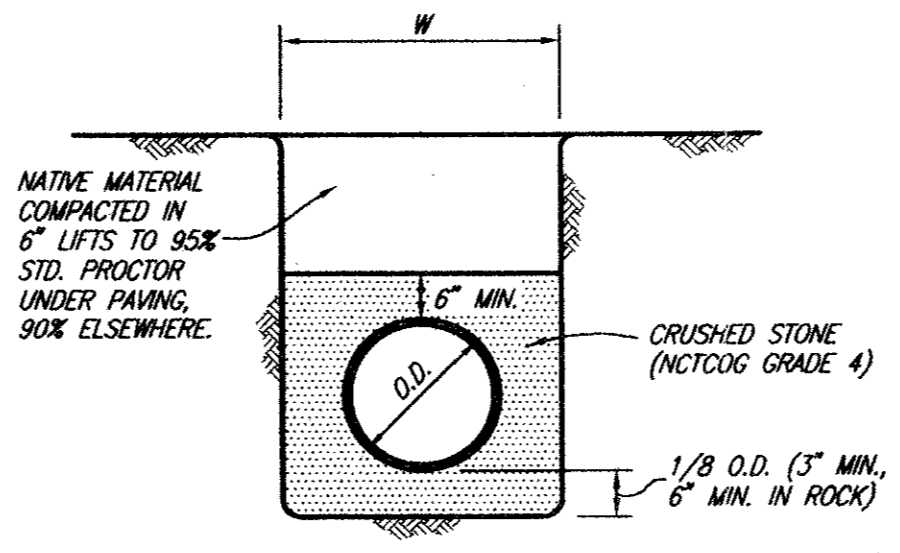
**SANITARY SEWER MANHOLE (CAST IN PLACE)**

PRECAST MANHOLES NOT ACCEPTABLE IN ADDISON. MANHOLES SHALL BE PLUMB TO WITHIN 1 INCH FOR EVERY 5 FEET OF VERTICAL DEPTH.  
NO SCALE



**STUBOUT & PLUG FOR FUTURE CONNECTIONS**  
NO SCALE

NOTE:  
MATCH SOFFITS UPSTREAM OF MANHOLE  
MATCH FLOWLINES DOWNSTREAM OF MANHOLE



**CLASS H EMBEDMENT**  
P.V.C. PIPE ONLY  
STD. P.V.C. SEWER

These plans and related specifications were prepared for construction of the specific project only. Reuse of these documents is not permitted without written authorization of Shimek, Jacc & Finklea, L.L.P.

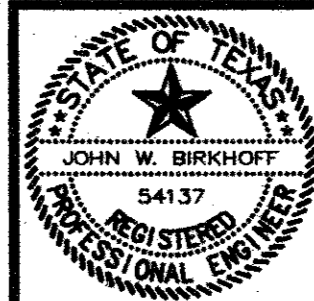
**TOWN OF ADDISON, TEXAS**

ADDISON AIRPORT SANITARY SEWER & WATER MAIN REPLACEMENT

**STANDARD DETAILS**

SHIMEK, JACOBS & FINKLEA, L.L.P.  
CONSULTING ENGINEERS  
Dallas, Texas

THESE DOCUMENTS ARE FOR BIDDING, CONSTRUCTION, AND PERMIT PURPOSES.  
*John W. Birkhoff*  
DATE: 7/24/97



DESIGNED BY: S.J. & F.	PROJECT: 96 169	SHEET NO. 2
DRAWN BY: S.J. & F.	DATE: JULY 1997	OF 2 SHEETS