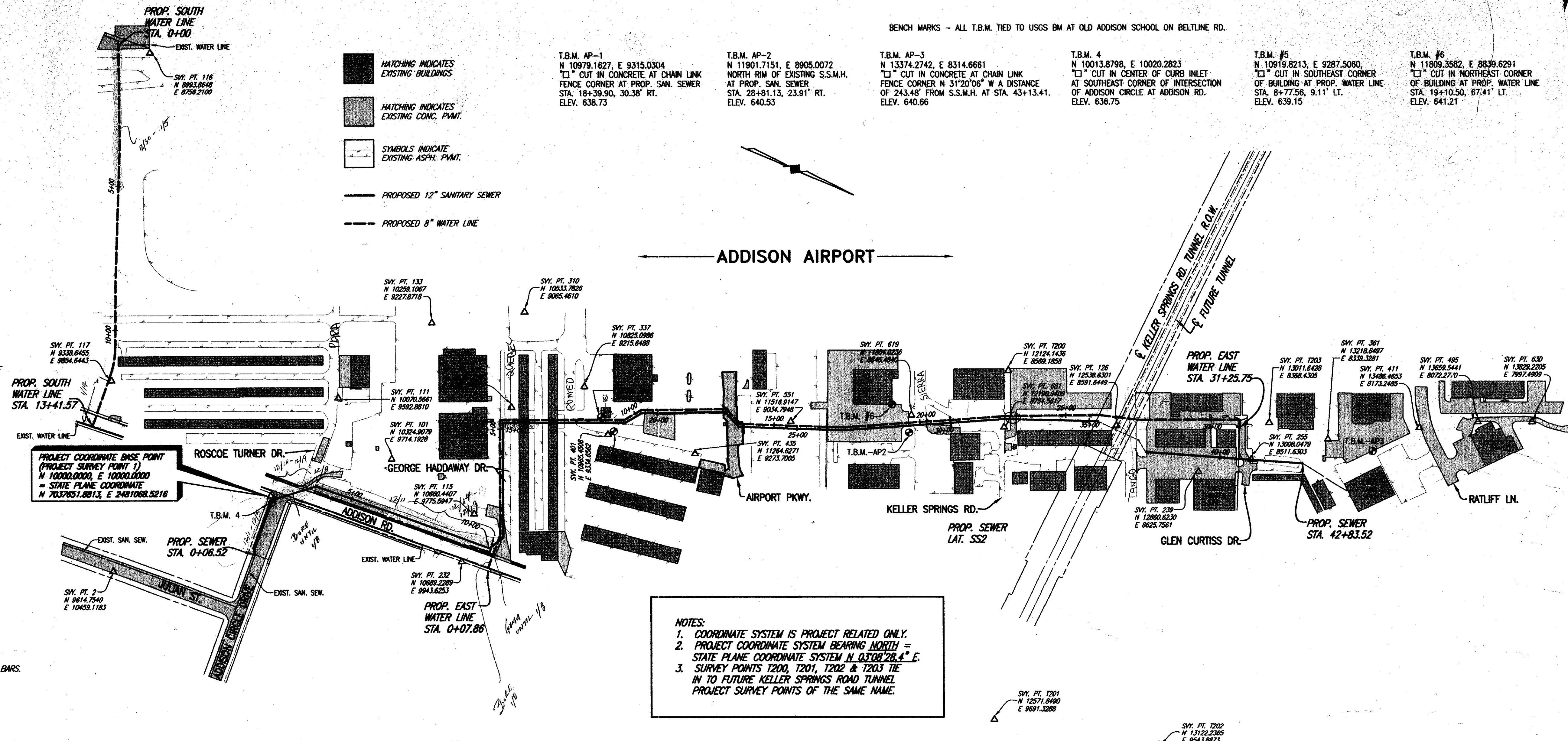


GENERAL NOTES

(NOTES APPLY TO ALL SHEETS)

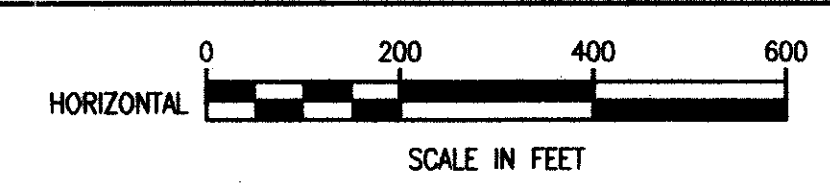
- REASONABLE EFFORT HAS BEEN MADE TO SHOW THE LOCATION OF ALL KNOWN UNDERGROUND UTILITIES AND SERVICE LINES. HOWEVER, THE OWNER ASSUMES NO RESPONSIBILITY FOR FAILURE TO SHOW ANY OR ALL EXISTING SUBSURFACE OR SURFACE UTILITIES OR UTILITY LINES, OR TO SHOW THEM IN THEIR EXACT LOCATION. THE CONTRACTOR SHALL BE RESPONSIBLE FOR THE PROTECTION OF ALL EXISTING UTILITIES, SERVICE LINES OR THE LIKE, WHICH ARE CROSSED OR EXPOSED BY THE CONSTRUCTION OPERATION.
- CONTRACTOR SHALL NOTIFY UTILITY COMPANIES 72 HOURS PRIOR TO CONSTRUCTION.
 - ELECTRIC
 - GENERAL TELEPHONE (G.T.E.)
 - LOVE STAR GAS
 - CABLE TELEPHONE
 - T.C.I. CABLE TV
- ALL PAVEMENT SHALL BE SAWCUT FOR TRENCHES. SAWCUTS SHALL BE FULL DEPTH.
- ALL WYES, STACKS AND PIPE SERVICE CONNECTIONS SHALL BE P.V.C. (SDR-35).
- ALL CONCRETE PAVEMENT (ROADWAYS, CURB & GUTTERS, DRIVES, AND SIDEWALKS, ETC.) SHALL HAVE BE FULL DEPTH SAWCUT. 18 INCH LONG NO. 4 DOWELS SHALL BE DRILLED INTO EXISTING PAVEMENT. CONTRACTOR SHALL UTILIZE A DRILLING RIG TO DRILL HOLES FOR DOWEL BARS. CONTRACTOR SHALL UTILIZE PROPER BITS AND PRESSURE, AS NOT TO DAMAGE EXISTING CONCRETE. CONTRACTOR SHALL BE RESPONSIBLE FOR ALL DAMAGED PAVEMENT AND REPAIR AT HIS OWN COST.
- ALL MANHOLE/PIPE CONNECTIONS SHALL INCLUDE A COUPLING WITH O-RING RUBBER GASKET, KOR-N-SEAL, A-LOK OR APPROVED EQUAL.
- THE CONTRACTOR SHALL PROTECT ALL UNDERGROUND SPRINKLER SYSTEMS. ALL DAMAGES CAUSED BY CONSTRUCTION SHALL BE REPAIRED BY AN IRRIGATOR LICENSED IN THE STATE OF TEXAS. ALL COST SHALL BORNE BY THE CONTRACTOR.
- CONTRACTOR SHALL HAVE UTILITY COMPANIES SUPPORT AND PROTECT OR RELOCATE THEIR UTILITY POLES, GUY WIRES OR CABLE AND/OR LIGHT POLES IN WORK AREA. COST SHALL BE SUBSIDIARY TO THE CONTRACT.
- ALL ROADWAYS/DRIVEWAYS, ETC. SHALL REMAIN OPEN DURING CONSTRUCTION. AT LEAST ONE WAY TRAFFIC (USING FLAGMAN OR OTHER MEANS) SHALL BE AVAILABLE DURING WORKING HOURS. AFTER HOURS, TWO WAY TRAFFIC MUST BE MAINTAINED.
- THE CONTRACTOR SHALL REPLACE ALL SHRUBS, PLANTS, TREES, ETC. THAT ARE REMOVED FOR THE COMMENCEMENT OF CONSTRUCTION AT HIS EXPENSE. NEW SHRUBS, PLANTS, TREES, ETC. SHALL BE EQUAL TO OR BETTER THAN EXISTING ONES OR MEET THE NEEDS OF THE PROPERTY OWNER.
- THE CONTRACTOR SHALL RESTORE ALL EXISTING LANDSCAPING AND VEGETATION ALONG THE CONSTRUCTION ROUTE TO ITS ORIGINAL CONDITION AFTER COMPLETION OF CONSTRUCTION.
- PRIOR TO CONSTRUCTION OF MAIN SEWER LINES, THE CONTRACTOR SHALL LOCATE AND UNCOVER ALL SERVICE LINES AND VERIFY THAT EACH CAN BE CONNECTED TO THE PROPOSED MAIN LINE.
- PRECAST MANHOLES ARE NOT ACCEPTABLE. ALL MANHOLES SHALL BE CAST IN PLACE.
- ALL WATER VALVES SHALL BE RESILIENT SEATED WEDGE GATE VALVES.
- EXISTING FIRE HYDRANTS, VALVES AND VALVE STACKS CALLED OUT IN PLANS TO BE REMOVED SHALL BE DISPOSED OF BY THE CONTRACTOR.
- ALL FENCES WHICH ARE REMOVED FOR THE COMMENCEMENT OF CONSTRUCTION SHALL BE REPLACED OR RECONSTRUCTED. ALL POSTS SHALL BE SET IN CONCRETE AND ALL TIES SHALL BE NEW. ALL CONCRETE MOW STRIPS SHALL BE RECONSTRUCTED W/ #3 DEFORMED BARS.
- CONTRACTOR SHALL ABANDON EXISTING SEWER MANHOLES AS SHOWN IN THE PLANS. PAY ITEM FOR ABANDONING AN EXISTING MANHOLE SHALL INCLUDE PLACING 2000 P.S.I. CONCRETE (M.C.T.C.O.G. CLASS B7) 12 INCHES ABOVE THE SPRING LINE OF THE HIGHEST PIPE, AND BACKFILLING AND COMPACTING THE MANHOLE 6 INCH LIFTS WITH EXCAVATED OR IMPORTED MATERIAL. REMOVE RING, COVER AND CONE. BACKFILL TOP 12 INCHES UNDER PAVEMENT STRUCTURE WITH SAND. IN OPEN AREAS, BACKFILL TOP 12 INCHES WITH IMPORTED TOPSOIL AND SOIL SOD.
- ALL EXISTING SEWER LINES WHICH ARE TO BE PLUGGED SHALL BE PLUGGED WITH A MINIMUM OF 18 INCHES OF 200 P.S.I. GROUT (M.C.T.C.O.G. CLASS B7). THE 18 INCHES OF SEWER LINE TO BE PLUGGED SHALL BE WIRE BRUSHED CLEANED PRIOR TO PLACEMENT OF GROUT.
- ALL CHANGES OF DIRECTION OF THE PROPOSED WATER LINE SHALL BE MARKED ON THE SURFACE. PAVEMENT SHALL BE MARKED WITH PERMANENT MARKERS MANUFACTURED BY D.A.S. MANUFACTURING, INC. OF VALDRO, FLORIDA (813-681-8024). THE MARKER SHALL BE BLUE WITH THE WORD "WATER" AND AN ARROW(S) FOR THE DIRECTION(S) OF THE LINE.
- ALL WATER SERVICES SHALL INCLUDE AN U.S.C. APPROVED DOUBLE CHECK VALVE ASSEMBLY UPSTREAM OF METER. EACH SHALL BE SET IN ITS OWN VALVE OR METER BOX.
- ALL GRASS DISTURBED ALONG PROJECT SHALL BE REPLACED WITH SOLID SOD PLACED END TO END. CONTRACTOR SHALL WATER SOD TWICE A DAY FOR A PERIOD OF SIX WEEKS. WATERING SHALL BE ACCOMPLISHED BY USE OF A WATER TRUCK.
- ALL EXISTING AND NEW FIRE HYDRANTS NOT ACTIVE SHALL HAVE OUT OF SERVICE MARKERS PLACED ON TWO NOZZLES. MARKERS SHALL BE FROM HYDRA-SHIELD MANUFACTURING 1-800-676-0911 OR EQUAL. THE COLOR SHALL BE RED.
- FINAL LOCATION OF WATER METER AND DOUBLE CHECK VALVE ASSEMBLY SHALL BE DETERMINED IN THE FIELD BY THE TOWN OF ADDISON.
- ALL PAVEMENT CUTS SHALL BE COMPLETED UTILIZING FULL DEPTH SAW CUT. PROPOSED CONCRETE PAVEMENT SHALL BE DOWELED INTO EXIST. CONCRETE PAVEMENT (SEE LONGITUDINAL BUTT JOINT DETAIL).
- ALL PAVEMENT REMOVAL AND REPLACEMENT IS SHOWN IN THE PROFILE. SEE SHEET 21 FOR PAVEMENT DETAILS.

SPECIAL NOTE TO CONTRACTOR:
 ALL PROPOSED MANHOLES SHALL INCLUDE INTERNAL MANHOLE CHIMNEY SEAL AS MANUFACTURED BY CHETEX SPECIALTY PRODUCTS (OF MAJURESHA, WI) OR APPROVED EQUAL. THEY SHALL ALSO INCLUDE A RAINSTOPPER AS MANUFACTURED BY SOUTHWESTERN PACKING & SEALS (OF SHREVEPORT, LA) OR APPROVED EQUAL.



NOTES:
 1. COORDINATE SYSTEM IS PROJECT RELATED ONLY.
 2. PROJECT COORDINATE SYSTEM BEARING NORTH = STATE PLANE COORDINATE SYSTEM N 03°08'28.4" E.
 3. SURVEY POINTS T200, T201, T202 & T203 TIE IN TO FUTURE KELLER SPRINGS ROAD TUNNEL PROJECT SURVEY POINTS OF THE SAME NAME.

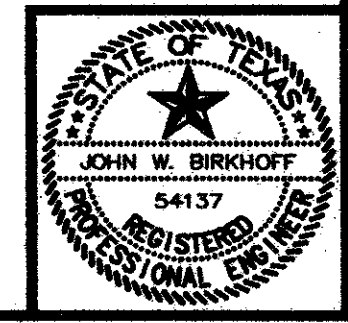
HORIZONTAL CONTROL PLAN



SUMMARY OF ABBREVIATIONS AND DEFINITIONS

GENERAL TOPOGRAPHY & HORIZONTAL/ VERTICAL CONTROL		TREES & BUSHES	
ABBREVIATION	DEFINITION	ABBREVIATION	DEFINITION
B.C.	BACK OF CURB	B.D.	BOIS D'ARC TREE
C	CENTERLINE	B.T.	BLACK THORN TREE
C.M.A.P.	CORRUGATED METAL ARCH PIPE	C.B.	CHINABERRY TREE
C.M.P.	CORRUGATED METAL PIPE	COR.	CEDAR TREE
C.I.	CAST IRON	C.E.	CEDAR ELM TREE
C.O.	CLEANOUT	C.M.	CRAPE MYRTLE TREE
CONN.	CONNECTION	C.P.	CHINESE PISTACHIO TREE
CULV.	CULVERT	C.W.	COTTONWOOD TREE
D.I.P.	DUCTILE IRON PIPE	CYP.	CYPRESS TREE
ELEV.	ELEVATION	H.B.	HACKBERRY TREE
ELEC.	BURIED ELECTRICAL POWER LINE	HCK.	HICKORY TREE
ENC.	ENCASMENT	H.T.	HAWTHORN TREE
E.P.	EDGE OF PAVEMENT	L.G.	LIGUSTRUM BUSH
ESMT.	EASEMENT	L.O.	LIVE OAK TREE
F.-F.	FACE TO FACE	LOC.	LOCUST TREE
F.H.	FIRE HYDRANT	MAG.	MAGNOLIA TREE
F.M.	SANITARY SEWER FORCE MAIN	MAP.	MAPLE TREE
F.L.	FLOW LINE	MSQ.	MESQUITE TREE
G.L.M.	GAS LINE MARKER	M.M.	MIMOSA TREE
G.M.	GAS METER	MUL.	MULBERRY TREE
G.V.	GAS VALVE	NAN.	NANDENA BUSH
GUT.	GUTTER	PEC.	PECAN TREE
HOWL.	HEADWALL	PER.	PERSIMMON TREE
I.P.F. OR I.R.F.	IRON PIN (ROD) FOUND	PHOT.	RED TIPPED PHOTINIA BUSH
LL.	LANDSCAPING LIGHT	R.B.	REDBUD TREE
L.P.	LIGHT POLE	R.O.K.	RED OAK TREE
L.S.	SANITARY SEWAGE LIFT STATION	S.G.	SWEET GUM TREE
L.S.T.	LANDSCAPING TIMBERS	SYC.	SYCAMORE TREE
M.B.	MAILBOX	WIL.	WILLOW TREE
M.H.	MANHOLE		
P.C.	POINT OF CURVATURE		
P.I.	POINT OF INTERSECTION		
P.L.	PROPERTY LINE		
P.P.	POWER POLE		
P.R.C.	POINT OF REVERSE CURVATURE		
P.T.	POINT OF TANGENCY		
P.V.C.	PLASTIC PIPE		
P.V.I.	POINT OF VERTICAL INTERSECTION		
R.	RADIUS		
R.C.	REINFORCED CONCRETE		
R.C.P.	REINFORCED CONCRETE PIPE		
R.O.W.	RIGHT OF WAY		
SAN. SEW. OR S.S.	SANITARY SEWER		
S.H.	LAWN SPRINKLER HEAD		
S.S.	SANITARY SEWER		
S.S.M.H.	SANITARY SEWER MANHOLE		
ST. SEW.	STORM SEWER		
S.V.B.	LAWN SPRINKLER VALVE BOX		
T.B.	TELEPHONE CABLE BOX		
T.C.	TOP OF CURB		
TEL.	BURIED TELEPHONE CABLE		
T.M.H.	TELEPHONE CABLE MANHOLE		
TO F.	TO FACE (OF CURB)		
T.V.	BURIED TELEVISION CABLE		
U.G.C.M.	UNDERGROUND CABLE MARKER		
U.P.M.	UNDERGROUND PIPELINE MARKER		
V.C.	VERTICAL CURVE		
W. OR W.L.	WATER LINE		
W.M.	WATER METER		
W.V.	WATER VALVE		

THESE DOCUMENTS ARE FOR BIDDING, CONSTRUCTION, AND PERMIT PURPOSES.
 DATE: 9/5/97



TOWN OF ADDISON, TEXAS
 ADDISON AIRPORT SANITARY SEWER & WATER MAIN REPLACEMENT
GENERAL NOTES & HORIZONTAL CONTROL
 SHIMEK, JACOBS & FINKLEA, L.L.P.
 CONSULTING ENGINEERS
 Dallas, Texas

DESIGNED BY: S.J. & F. PROJECT: 96 169 SHEET NO. 1
 DRAWN BY: S.J. & F. DATE: FEBRUARY 1997 OF 24 SHEETS