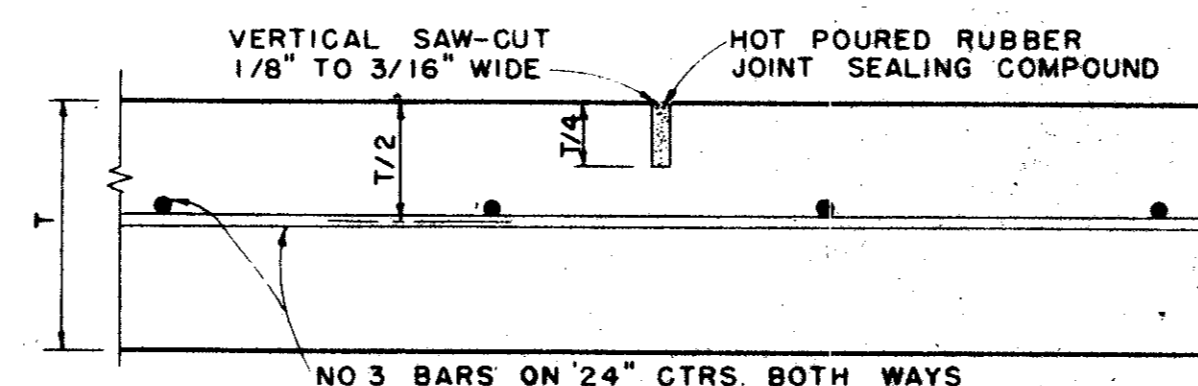
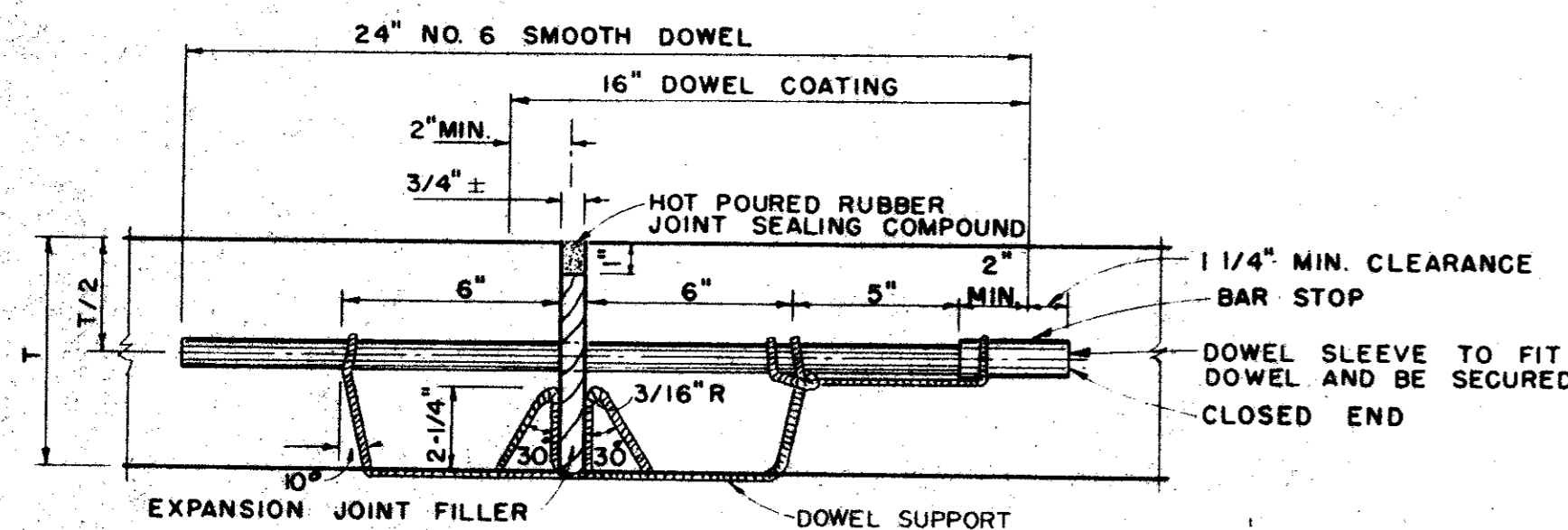


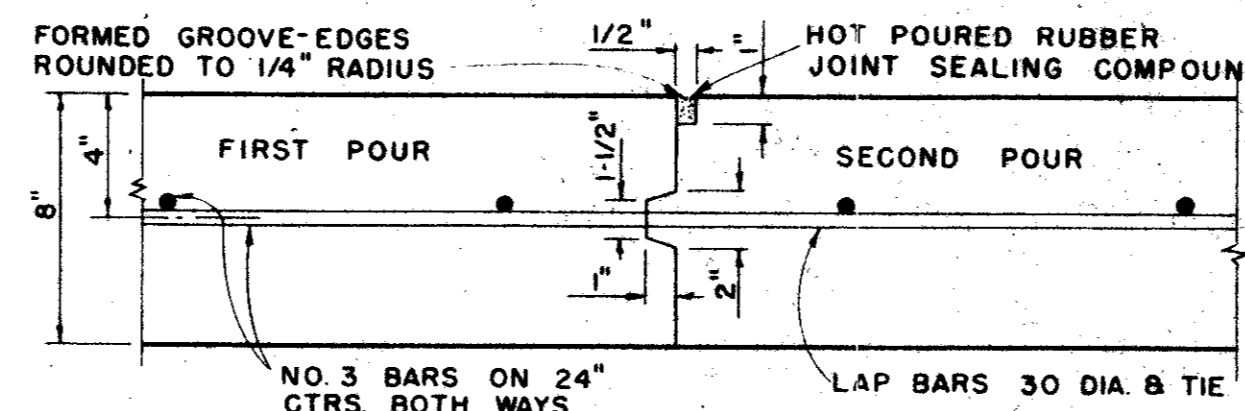
SPACING DIAGRAM FOR JOINTS
IDENTICAL FOR STREETS (CONCRETE PAVEMENT OR BASE) AND ALLEYS EXCEPT THAT EXPANSION JOINTS FOR ALLEYS SHALL BE PLACED AT THE END OF THE RETURN IN LINE WITH THE PROPERTY LINE. SPACING OF EXPANSION JOINTS SHALL NOT EXCEED 600 FEET.



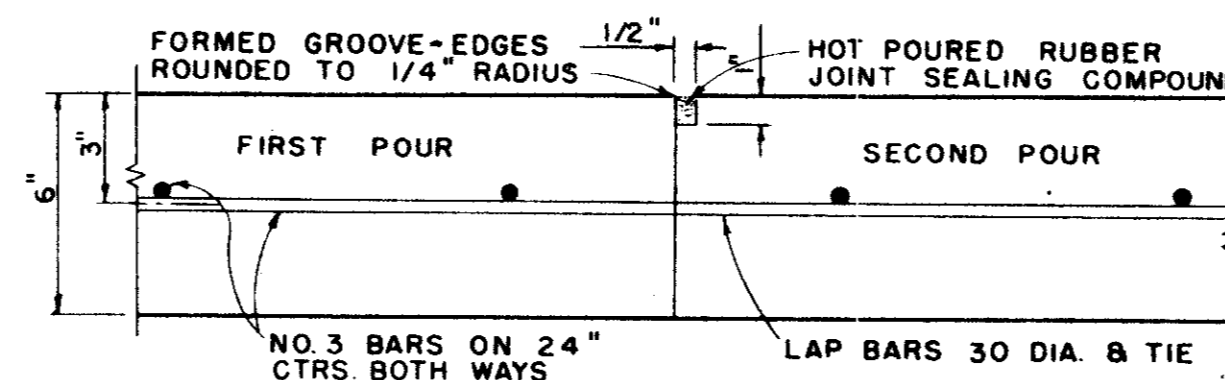
SAWED DUMMY JOINT
IDENTICAL FOR STREETS AND ALLEYS EXCEPT ALLEY LONGITUDINAL REINFORCEMENT BARS



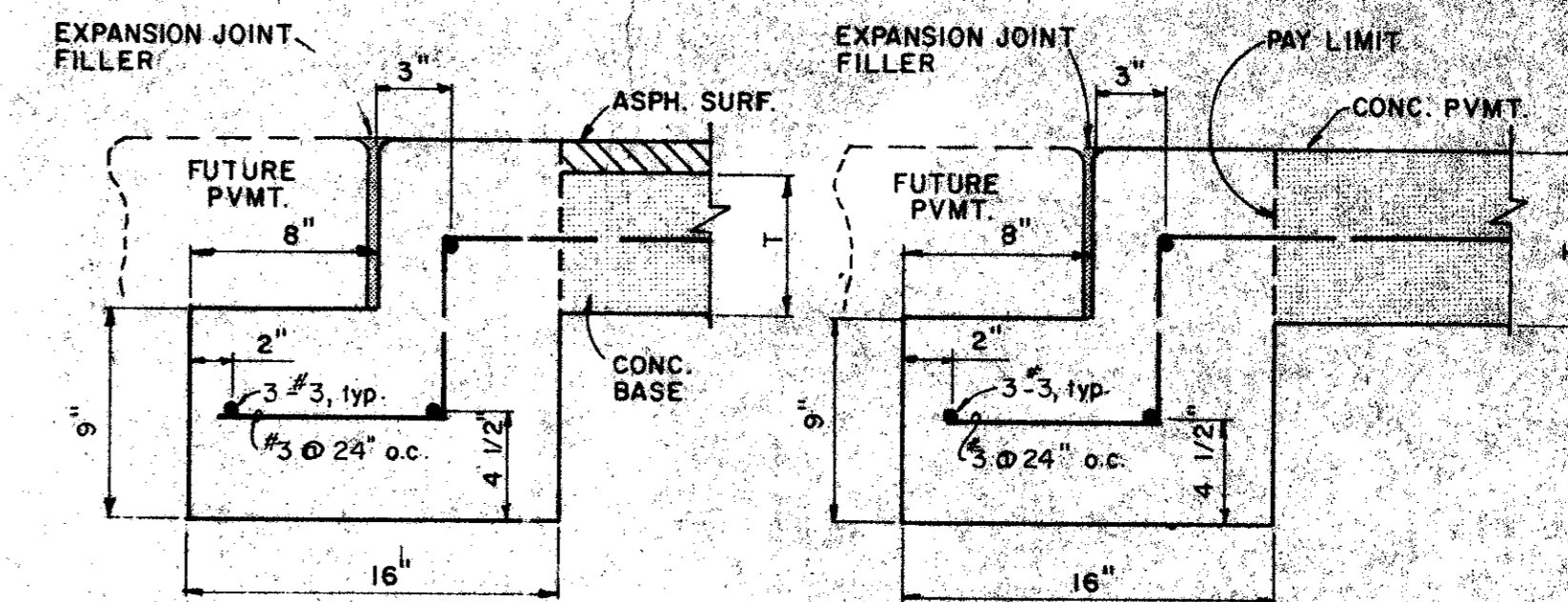
TRANSVERSE EXPANSION JOINT
IDENTICAL FOR STREETS & ALLEYS



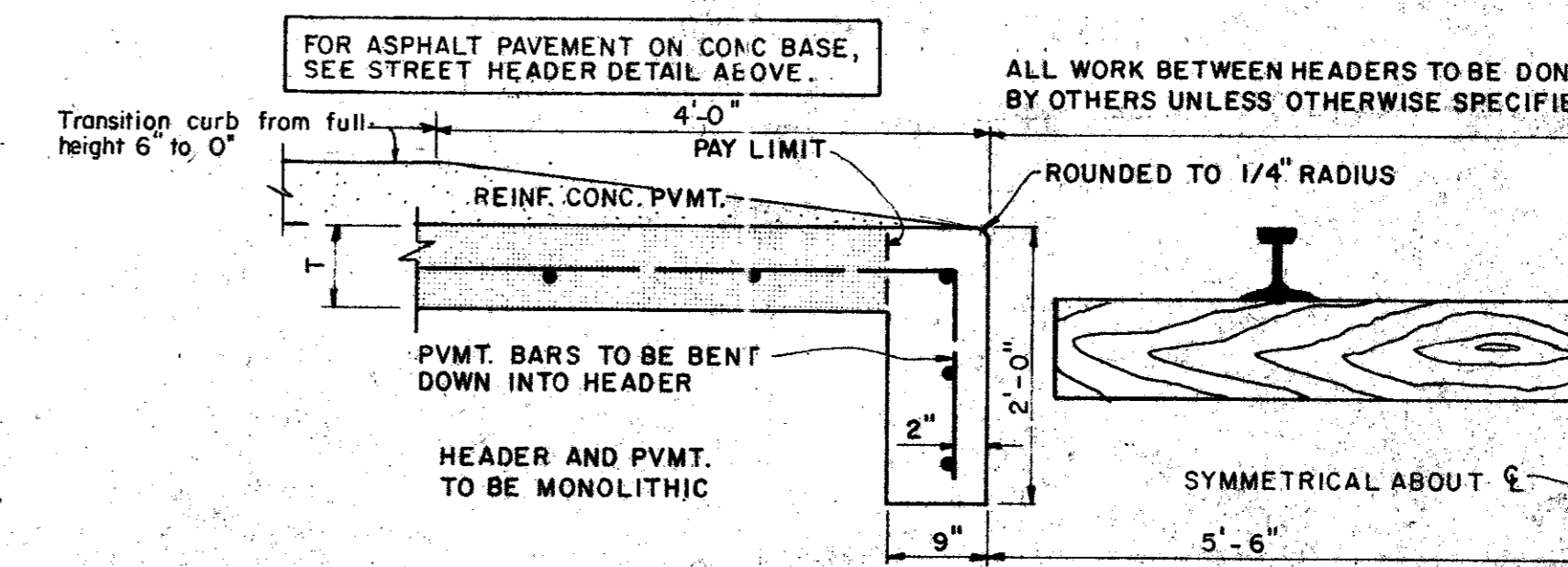
CONSTRUCTION JOINT
FOR 8" THICKNESS PAVEMENT OR BASE



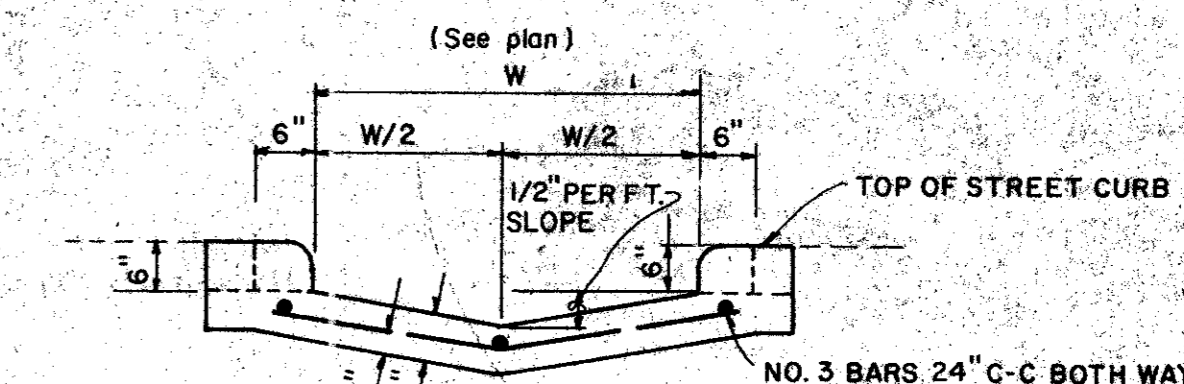
CONSTRUCTION JOINT
FOR 6" THICKNESS PAVEMENT OR BASE
IDENTICAL FOR STREETS AND ALLEYS EXCEPT ALLEY LONGITUDINAL REINFORCEMENT BARS



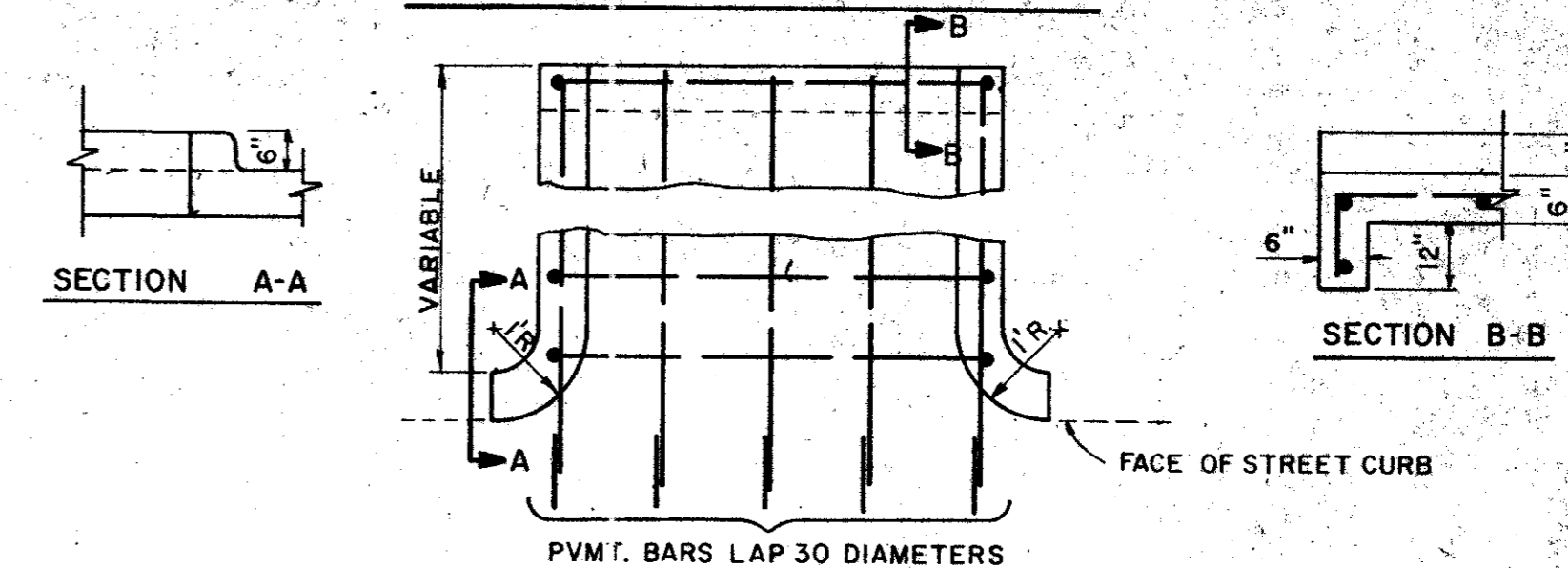
STREET HEADER



RAILROAD HEADER

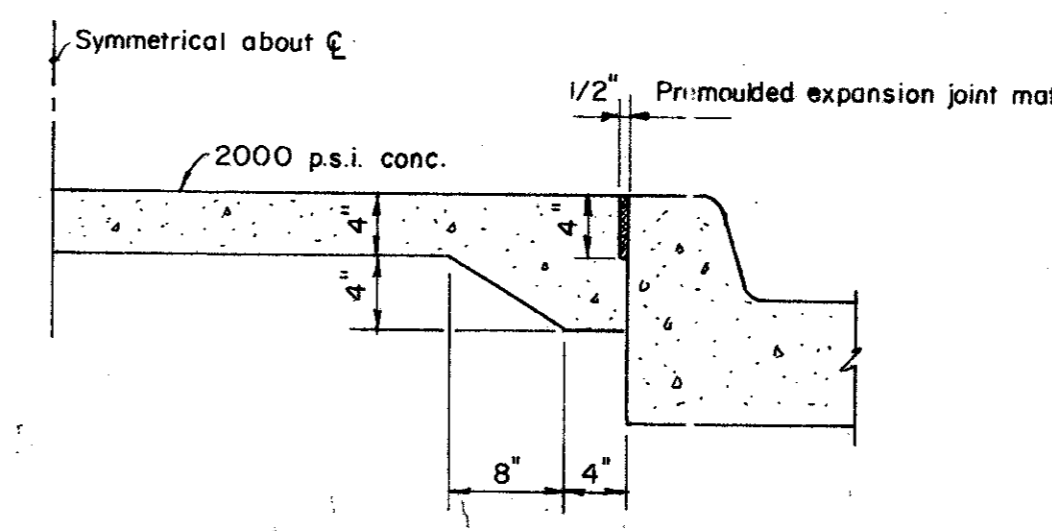


SECTION AT CURB FACE

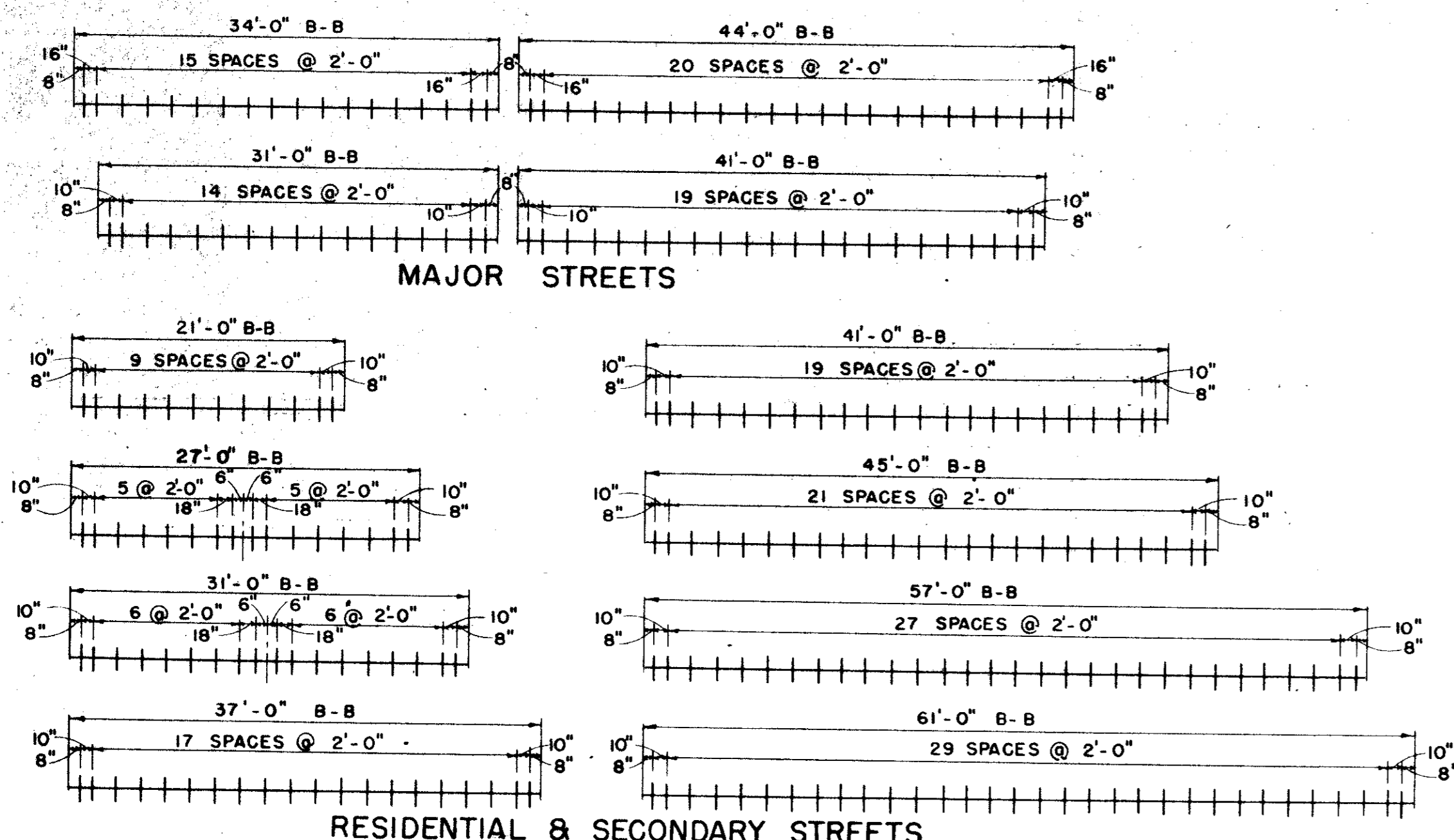


PLAN

FLUME



NON-REINFORCED MEDIAN PAVEMENT
IN ALL AREAS LESS THAN 6' BC TO BC UNLESS OTHERWISE DIRECTED BY ENGINEER.



SPACING DIAGRAM FOR DOWELS AT EXPANSION JOINTS

Record Set 5/9/85

CITY OF ADDISON
DALLAS COUNTY, TEXAS

WESTGROVE / VOSS ROAD IMPROVEMENTS

STANDARD
PAVING DETAILS B

GINN, INC.
Consulting Engineers Dallas, Texas

DESIGNED-H.K. DRAWN-S.M.M. DATE- SEPT. 1982 JOB No. J-152
APPROVED-H.G. CHECKED-G.F. SCALE- NONE SHEET 19 OF