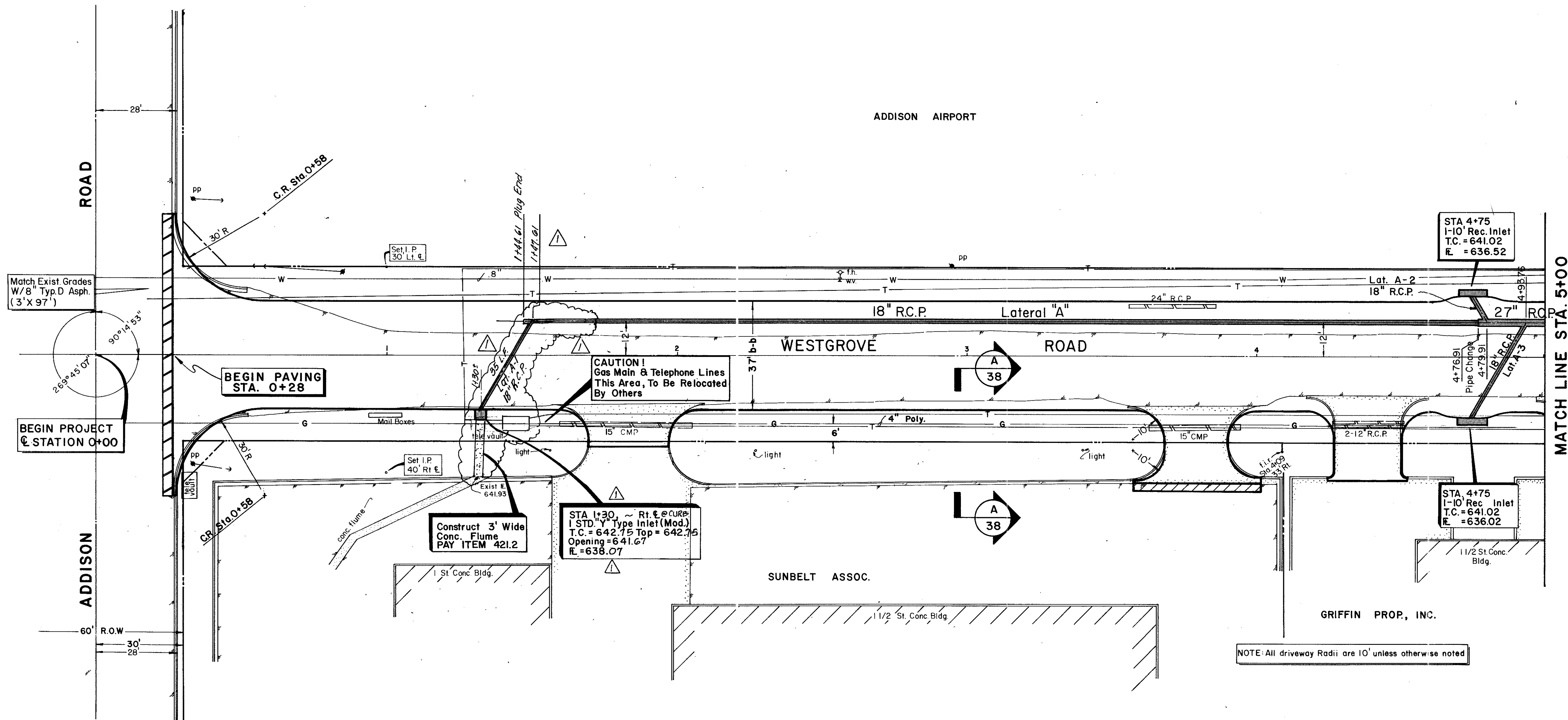


ADDISON AIRPORT



MATCH LINE STA. 5+00

BEGIN PAVING STA. 0+28

BEGIN PROJECT @ STATION 0+00

CAUTION! Gas Main & Telephone Lines This Area, To Be Relocated By Others

Construct 3' Wide Conc. Flume PAY ITEM 421.2

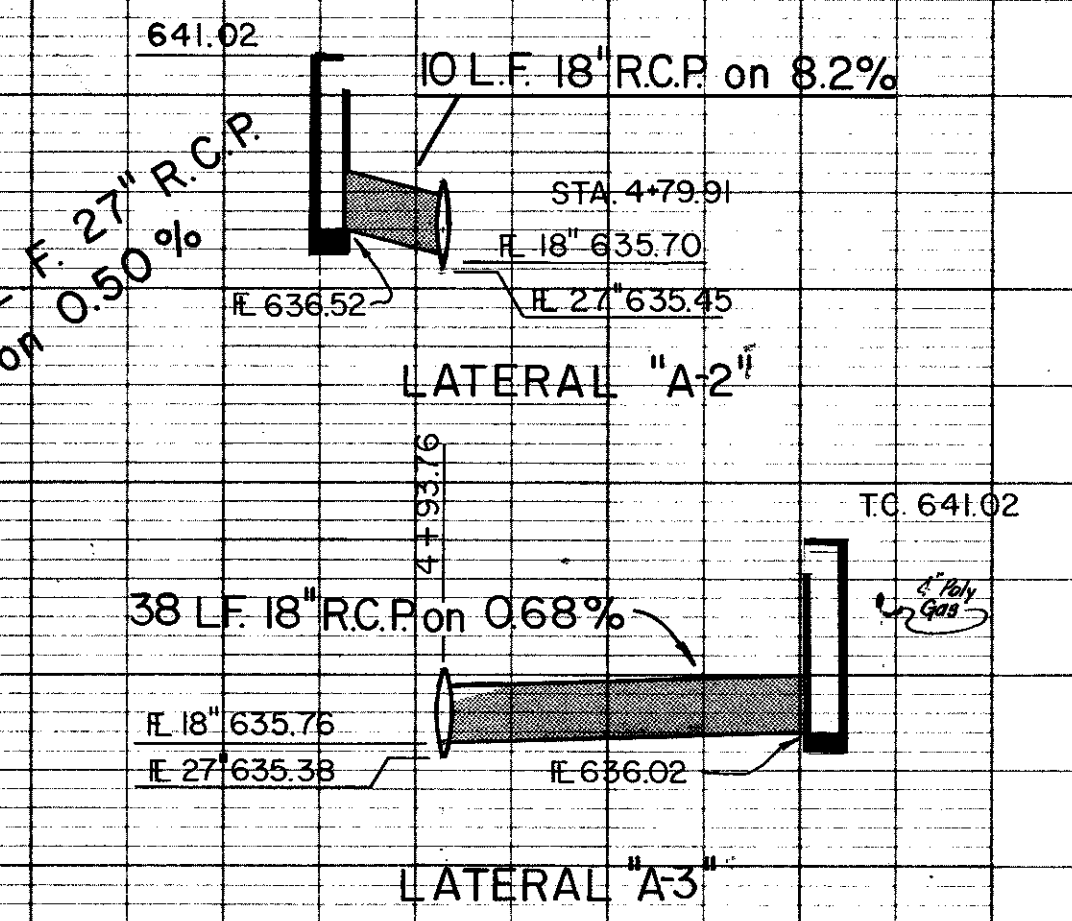
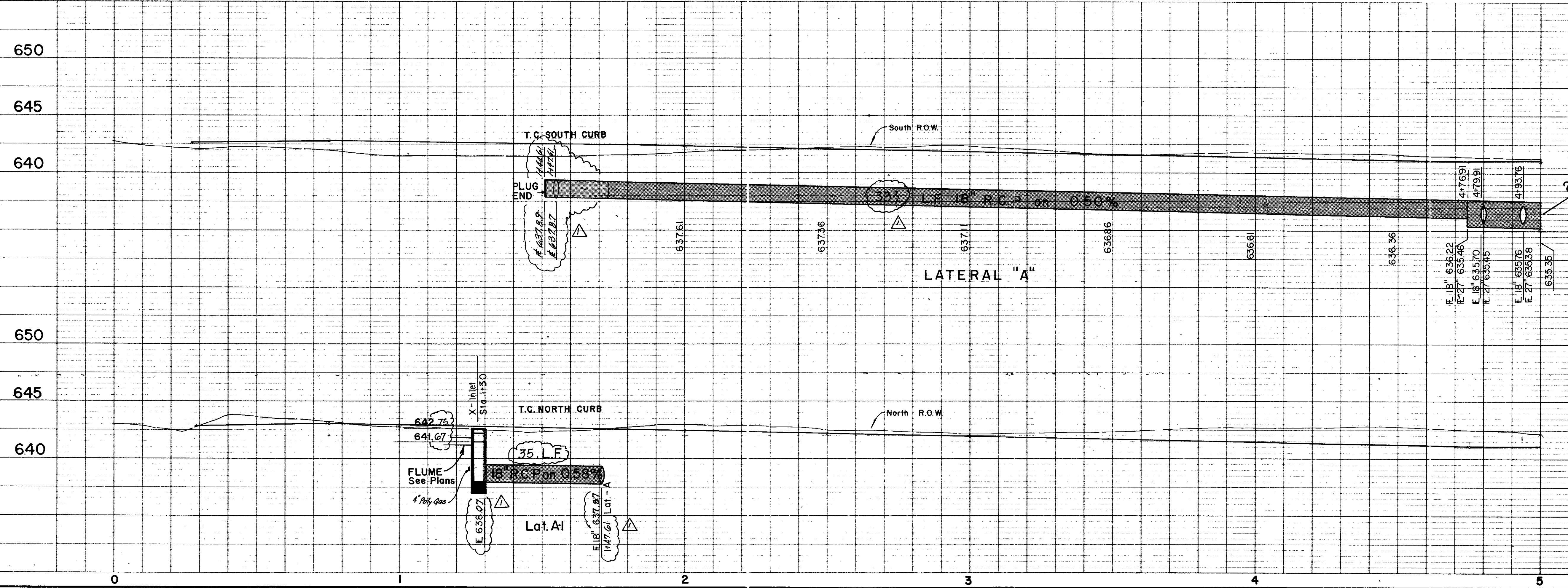
STA 1+30. ~ Rt. @ CURB I STD. V Type Inlet (Mod.) T.C. = 642.75 Top = 642.75 Opening = 641.67 E. = 638.07

STA 4+75 1-10' Rec. Inlet T.C. = 641.02 E. = 636.52

STA 4+75 1-10' Rec. Inlet T.C. = 641.02 E. = 636.02

NOTE: All driveway Radii are 10' unless otherwise noted

B.M. #1 - "D" cut on T.C. No. side of Westgrove 60' East of Addison Rd. ELEV. 641.96



Record Set 5/9/85

Revised Grades and lengths as required.
 Changed location of inlet, extended Lat. A-21' to East

NO.	REVISION	BY	DATE
1	GF	GF	1-19-83

CITY OF ADDISON
 DALLAS COUNTY, TEXAS
WESTGROVE / VOSS ROAD IMPROVEMENTS

DRAINAGE - STA. 0+00 to STA. 5+00

GINN, INC.
 Consulting Engineers - Dallas, Texas

DESIGNED - GF DRAWN - R.G.B. DATE - SEPT., 1982 FILE J-192
 APPROVED - HWG. CHECKED - HBJ SCALE - H-1" = 20' V-1" = 5' SHEET 21 OF 21