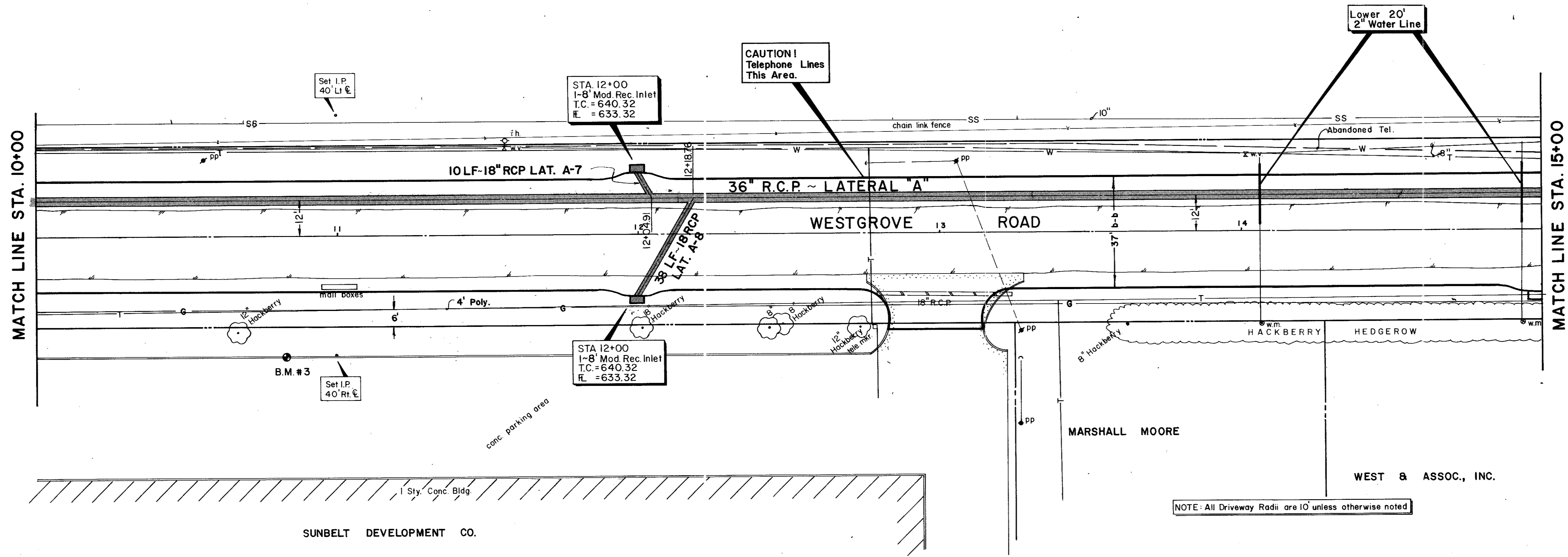


ADDISON AIRPORT

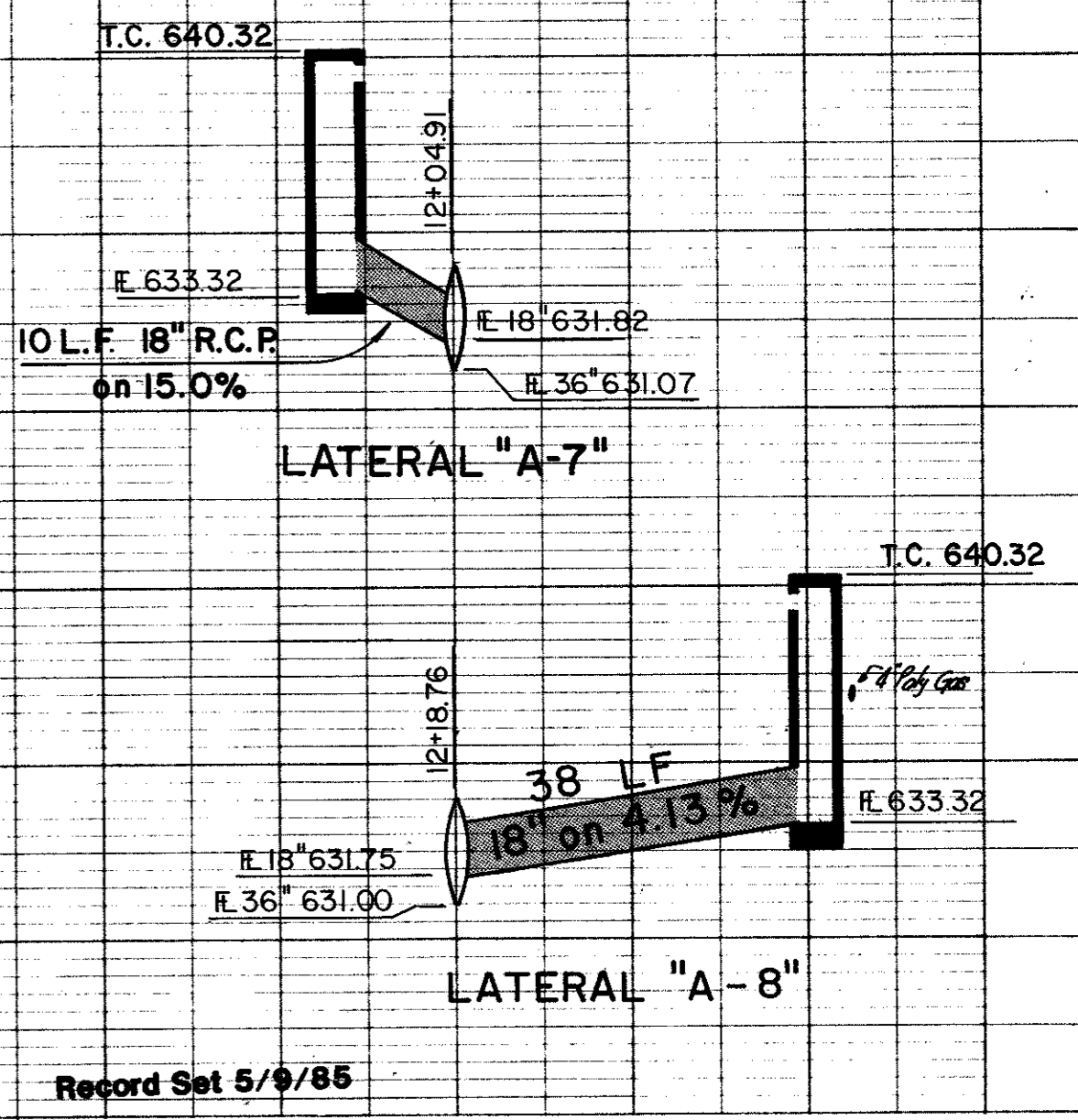
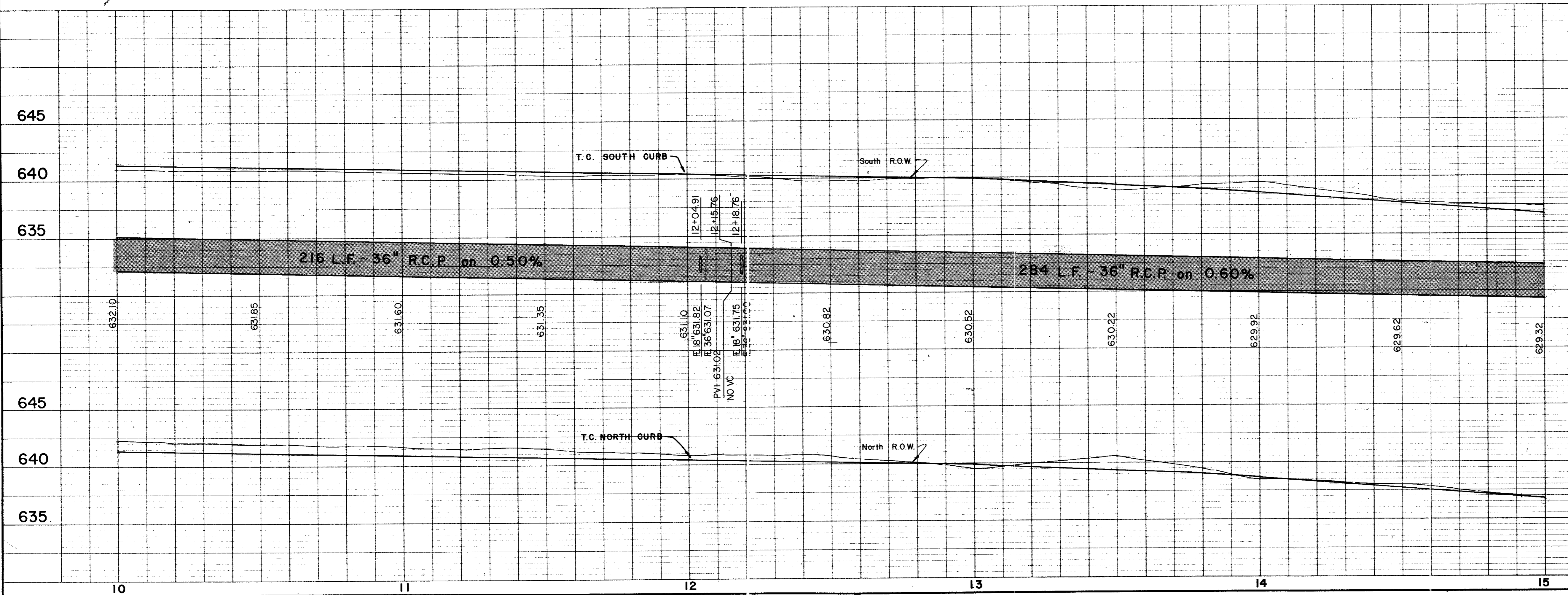


SUNBELT DEVELOPMENT CO.

WEST & ASSOC., INC.

NOTE: All Driveway Radii are 10' unless otherwise noted

B.M.#3 - "D" cut on T.C. 40' Rt. Sta. 10+82
(4411 Westgrove)
ELEV. 641.74



Record Set 5/9/85

NO.	REVISION	BY	DATE
CITY OF ADDISON DALLAS COUNTY, TEXAS			
WESTGROVE/VOSS ROAD IMPROVEMENTS			
DRAINAGE - STA. 10+00 to STA. 15+00			
GINN, INC. Consulting Engineers - Dallas, Texas			
DESIGNED - GF	DRAWN - RGB	DATE - SEPT., 1982	FILE J-192
APPROVED - HWG	CHECKED - HBJ	SCALE - H-1"=20'/V-1"=5'	SHEET 23 OF