

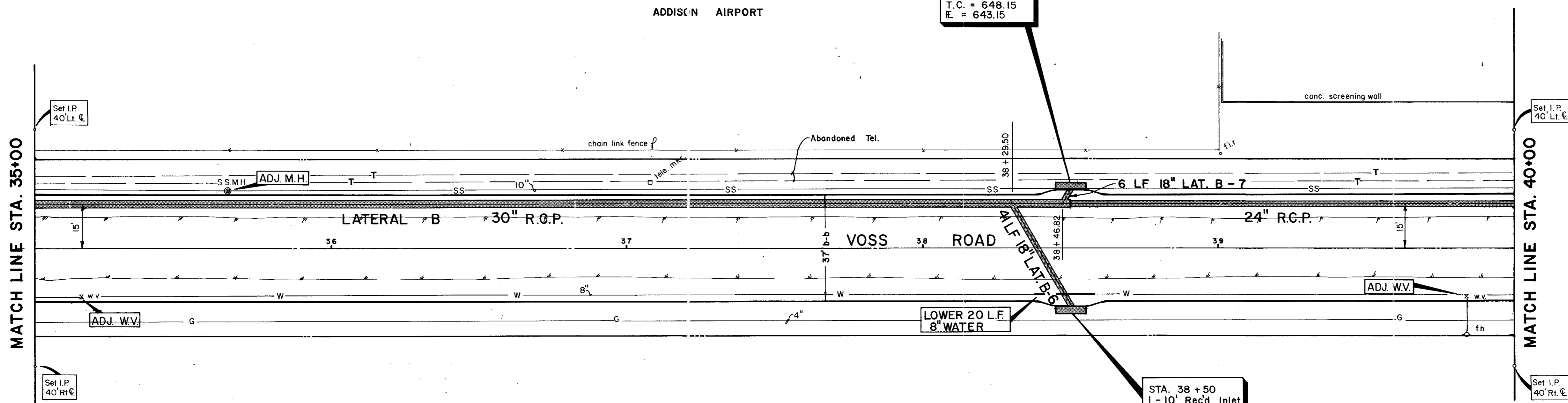
ADDISON AIRPORT

STA. 38 + 50
1 - 10' Rec'd Inlet
T.C. = 648.15
E. = 643.15

STA. 38 + 50
1 - 10' Rec'd Inlet
T.C. = 648.15
E. = 643.15

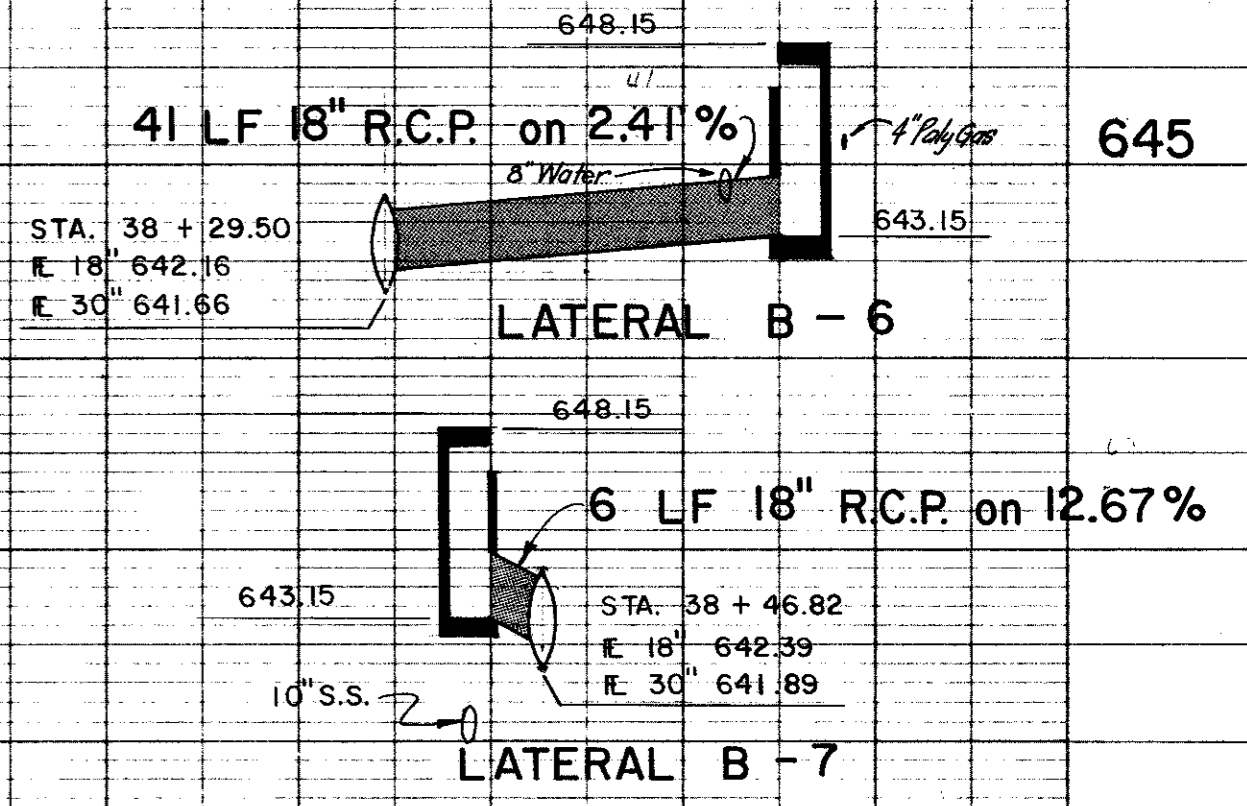
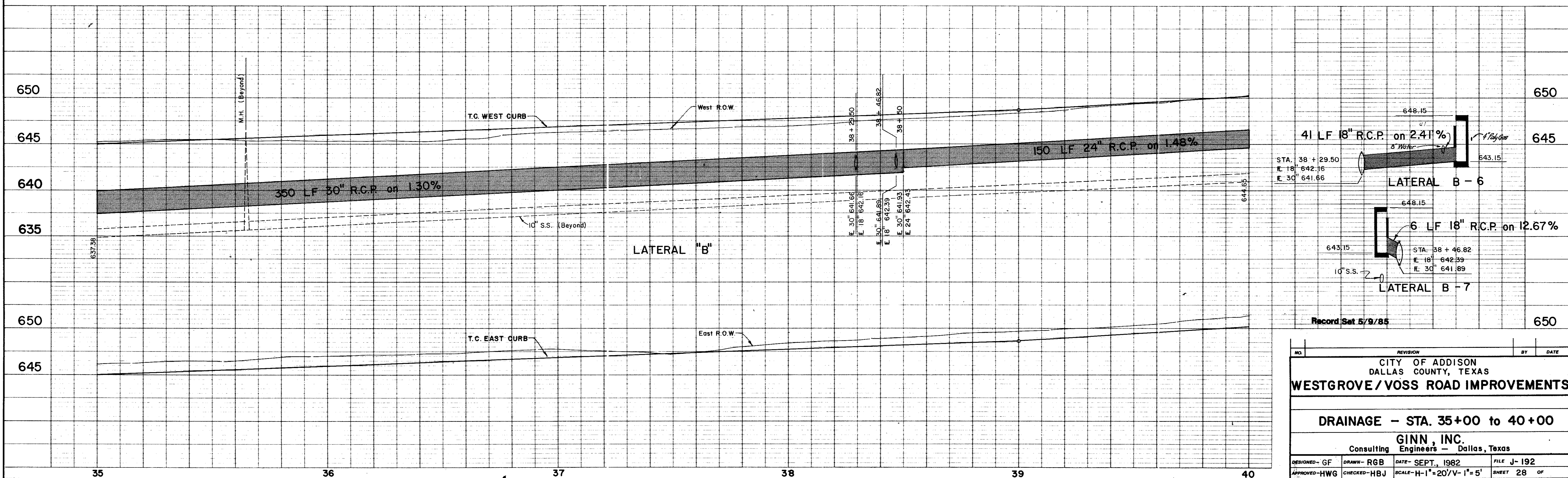
MATCH LINE STA. 35+00

MATCH LINE STA. 40+00



BAIRD PROPERTIES, INC.

B.M. # 7 - Top F.H. 28.5 Rt. Sta. 34+91.5
ELEV. 649.13



Record Set 5/9/85

NO.	REVISION	BY	DATE
	CITY OF ADDISON DALLAS COUNTY, TEXAS		
WESTGROVE / VOSS ROAD IMPROVEMENTS			
DRAINAGE - STA. 35+00 to 40+00			
GINN, INC. Consulting Engineers - Dallas, Texas			
DESIGNED - GF	DRAWN - RGB	DATE - SEPT, 1982	FILE J-192
APPROVED - HWG	CHECKED - HBJ	SCALE - H-1" = 20'/V-1" = 5'	SHEET 28 OF