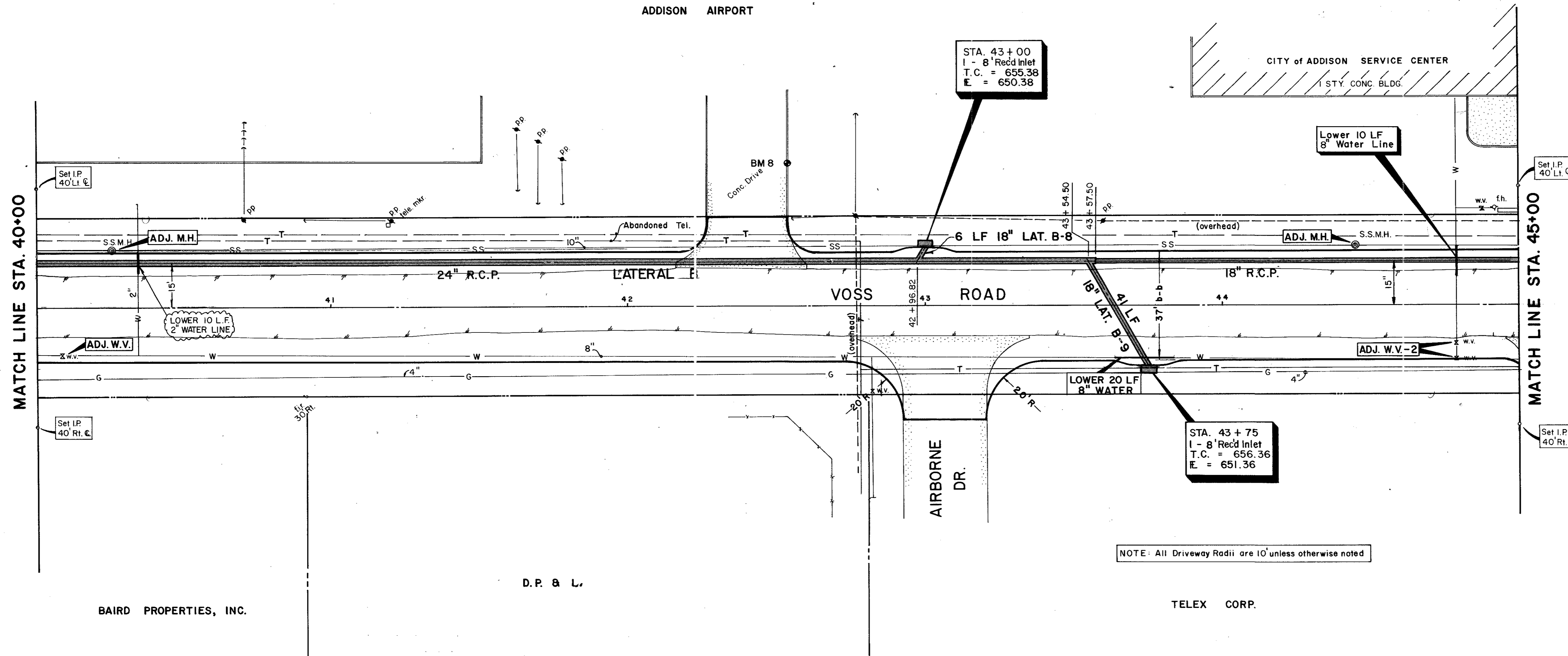


ADDISON AIRPORT

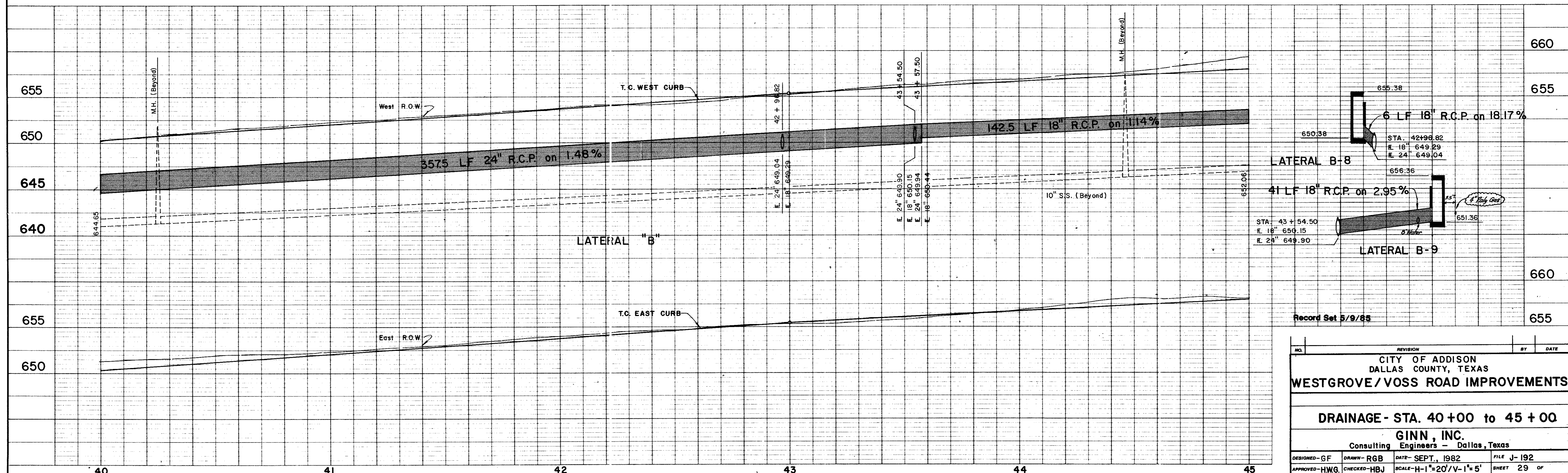


STA. 43+00
1 - 8" Rec'd Inlet
T.C. = 655.38
E. = 650.36

STA. 43+75
1 - 8" Rec'd Inlet
T.C. = 656.36
E. = 651.36

NOTE: All Driveway Radii are 10' unless otherwise noted

B.M.#8 - "□" cut on T.C. No. side of Drive
50' Lt. Sta. 42+55
ELEV. 654.92



Record Set 5/9/85

NO.	REVISION	BY	DATE
CITY OF ADDISON DALLAS COUNTY, TEXAS WESTGROVE / VOSS ROAD IMPROVEMENTS			
DRAINAGE - STA. 40+00 to 45+00			
GINN, INC.			
Consulting Engineers - Dallas, Texas			
DESIGNED - GF	DRAWN - RGB	DATE - SEPT., 1982	FILE J-192
APPROVED - HWG	CHECKED - HBJ	SCALE - H-1"=20'/V-1"=5'	SHEET 29 OF