

SNK MIXED USE DEVELOPMENT
INSTRUMENT NO. 200070208687
MRDCT

F.H. LOCATION SHOWN SCHEMATICALLY
SEE CITY STD. DETAIL
FOR LOCATION REQUIREMENTS

DETAIL 'A'

OPUS ADDITION
DOCUMENT NO. 201000085949

CONTRACTOR SHALL VERIFY
HORIZONTAL AND VERTICAL
LOCATION OF EXIST. 12" WATER
INSTALL:
1-12"x6" TEE
1-12" VALVE
38 L.F. 6" WATER
1-6" 22.25" BEND
1-6" VALVE
1-F.H. & CONC. PAD PER
CITY STD. DETAIL
SEE NOTES

INSTALL TEMP. CONST.
FENCING DURING CONST.

BEGIN 30 L.F. 6"
WATER BY BORE

END 30 L.F. 6"
WATER BY BORE

PROP. 6" WATER

CONTRACTOR SHALL VERIFY
HORIZONTAL AND VERTICAL
LOCATION OF EXIST. 8"
SAN. SEW. PRIOR TO
CONSTRUCTION. INSTALL TWO
WAY CLEANOUT AT ROW

SNK MIXED USE DEVELOPMENT
INSTRUMENT NO. 200070208687
MRDCT

PIPE SIZE CHANGE
F/L 12" 604.9
F/L 8" 605.07

INSTALL 79 L.F.
8" SDR-35 STORM
DRAIN @ 0.4%
(SEE NOTE 1)

F/L 8" 605.5
F/L 12" 605.0

INSTALL:
1-8"x8" TEE
1-8"x6" REDUCER
1-6" VALVE
1-F.H. & CONC. PAD PER
CITY STD. DETAIL
SEE DETAIL 'A'

INSTALL 8" CLOSED FIRELINE SERVICE
AND DOUBLE CHECK DETECTOR ASSEMBLY
(SEE DETAIL A)

INSTALL 43 L.F.
6" SDR-35 STORM
DRAIN @ 1.0%
(SEE NOTE 1)

INSTALL 36 L.F.
12" SDR-35 STORM
DRAIN @ 1.0%
(SEE NOTE 1)

INSTALL 23 L.F.
15" SDR-35 STORM
DRAIN @ 0.6%
(SEE NOTE 1)

INSTALL 47 L.F.
15" SDR-35 STORM
DRAIN @ 1.0%
(SEE NOTE 1)

INSTALL 36 L.F.
12" SDR-35 STORM
DRAIN @ 1.0%
(SEE NOTE 1)

INSTALL 23 L.F.
15" SDR-35 STORM
DRAIN @ 0.6%
(SEE NOTE 1)

INSTALL 47 L.F.
15" SDR-35 STORM
DRAIN @ 1.0%
(SEE NOTE 1)

INSTALL 36 L.F.
12" SDR-35 STORM
DRAIN @ 1.0%
(SEE NOTE 1)

INSTALL 23 L.F.
15" SDR-35 STORM
DRAIN @ 0.6%
(SEE NOTE 1)

INSTALL 47 L.F.
15" SDR-35 STORM
DRAIN @ 1.0%
(SEE NOTE 1)

INSTALL 36 L.F.
12" SDR-35 STORM
DRAIN @ 1.0%
(SEE NOTE 1)

INSTALL 23 L.F.
15" SDR-35 STORM
DRAIN @ 0.6%
(SEE NOTE 1)

INSTALL 47 L.F.
15" SDR-35 STORM
DRAIN @ 1.0%
(SEE NOTE 1)

INSTALL 36 L.F.
12" SDR-35 STORM
DRAIN @ 1.0%
(SEE NOTE 1)

INSTALL 23 L.F.
15" SDR-35 STORM
DRAIN @ 0.6%
(SEE NOTE 1)

INSTALL TEMP. CONST.
FENCING DURING CONST.

BEGIN 27 L.F. 8"
WATER BY BORE

END 27 L.F. 8"
WATER BY BORE

2-15" 45° BENDS

INSTALL 47 L.F.
15" SDR-35 STORM
DRAIN @ 1.0%
(SEE NOTE 1)

INSTALL 36 L.F.
12" SDR-35 STORM
DRAIN @ 1.0%
(SEE NOTE 1)

INSTALL 23 L.F.
15" SDR-35 STORM
DRAIN @ 0.6%
(SEE NOTE 1)

INSTALL 47 L.F.
15" SDR-35 STORM
DRAIN @ 1.0%
(SEE NOTE 1)

CONTRACTOR SHALL VERIFY
HORIZONTAL AND VERTICAL
LOCATION OF EXIST. 12" WATER
CONNECT TO EXIST. 12" WATER
BEGIN 8" WATER
INSTALL:
1-12"x8" TAPPING SLEEVE
1-8" TAPPING VALVE
1-8" 11.25" BEND
65 L.F. 8" WATER
SEE DETAIL 'A'

REMOVE 'Y' INLET
& PLUG 27" RCP
WITH PRECAST CONC.
PLUG AND CONC.
COLLAR

REMOVE EXIST. 'Y' INLET
CONNECT PROPOSED 15"
SDR 35 ROOF DRAIN WITH
CONC. COLLAR
F/L 15" 603.80
F/L 27" 603.65

PIPE SIZE CHANGE
F/L 15" 604.40
F/L 12" 604.55

INSTALL 36 L.F.
12" SDR-35 STORM
DRAIN @ 1.0%
(SEE NOTE 1)

INSTALL 23 L.F.
15" SDR-35 STORM
DRAIN @ 0.6%
(SEE NOTE 1)

INSTALL 47 L.F.
15" SDR-35 STORM
DRAIN @ 1.0%
(SEE NOTE 1)

INSTALL 36 L.F.
12" SDR-35 STORM
DRAIN @ 1.0%
(SEE NOTE 1)

INSTALL 23 L.F.
15" SDR-35 STORM
DRAIN @ 0.6%
(SEE NOTE 1)

CONTRACTOR SHALL VERIFY
HORIZONTAL AND VERTICAL
LOCATION OF EXIST. 12" WATER
CONNECT TO EXIST. 12" WATER
W/ TAPPING SLEEVE & VALVE
BEGIN 4" WATER
INSTALL:
1-12"x4" TEE
1-12" VALVE
1-4" VALVE
1-4" 11.25" BEND
34 L.F. 4" WATER
SEE DETAIL 'B'

DALLAS PARKWAY
(VARIABLE WIDTH ROW)

INSTALL 43 L.F.
6" SDR-35 STORM
DRAIN @ 1.0%
(SEE NOTE 1)

INSTALL 36 L.F.
12" SDR-35 STORM
DRAIN @ 1.0%
(SEE NOTE 1)

INSTALL 23 L.F.
15" SDR-35 STORM
DRAIN @ 0.6%
(SEE NOTE 1)

INSTALL 47 L.F.
15" SDR-35 STORM
DRAIN @ 1.0%
(SEE NOTE 1)

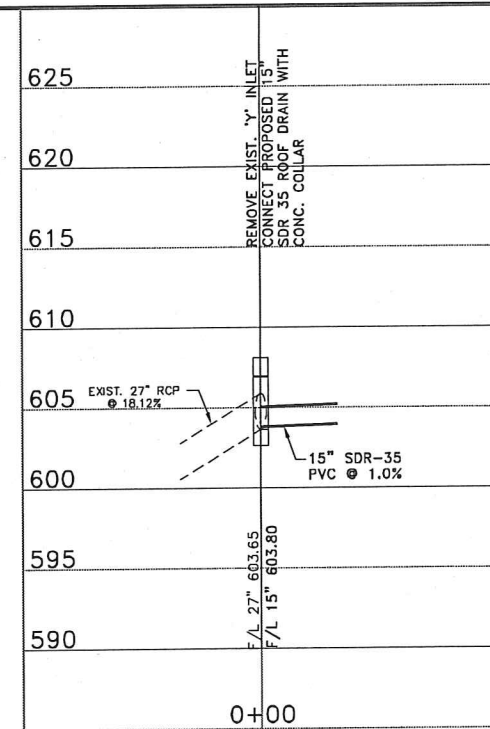
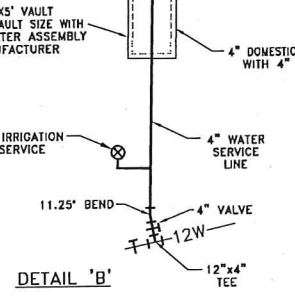
INSTALL 36 L.F.
12" SDR-35 STORM
DRAIN @ 1.0%
(SEE NOTE 1)

INSTALL 23 L.F.
15" SDR-35 STORM
DRAIN @ 0.6%
(SEE NOTE 1)

INSTALL 47 L.F.
15" SDR-35 STORM
DRAIN @ 1.0%
(SEE NOTE 1)

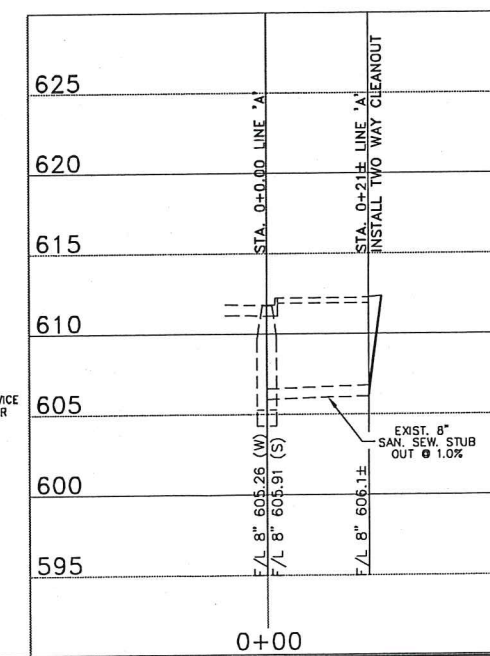
INSTALL 36 L.F.
12" SDR-35 STORM
DRAIN @ 1.0%
(SEE NOTE 1)

INSTALL 23 L.F.
15" SDR-35 STORM
DRAIN @ 0.6%
(SEE NOTE 1)



LOT 1
SNK MIXED USE DEVELOPMENT
INSTRUMENT NO. 200070208687
MRDCT

INSTALL 4" DOMESTIC WATER SERVICE
SEE PLUMBING PLANS FOR CONNECTION
TO BUILDING AND DOUBLE CHECK VALVE
BACK FLOW PREVENTION ASSEMBLY LOCATION.



Grantham & Associates, Inc.
Civil Engineering & Surveying
Serving with Integrity
4570 NAAMAN FOREST BLVD., SUITE 200, L.B. 2
GARLAND, TEXAS 75044
(972) 864-2333 (TEL)
(972) 864-2334 (FAX)

NO.	DATE	REVISION	APPROV.
1			
2			
3			
4			
5			
6			

GRANTHAM & ASSOCIATES
F-005438
101252
REGISTERED
PROFESSIONAL ENGINEER

THE SEAL APPEARING ON THIS DOCUMENT WAS AUTHORED BY P. CHRISTOPHER ROBINSON ON 12/8/11 ALTERATION OF A SEALED DOCUMENT WITHOUT PROPER NOTIFICATION TO THE RESPONSIBLE ENGINEER IS AN OFFENSE UNDER THE TEXAS ENGINEERING PRACTICE ACT.

CONSTRUCTION PLANS FOR ALLEGRO - PHASE 2
STORM SEWER, WATER & SANITARY SEWER PLAN
HARVARD PROPERTY TRUST, LLC

DATE: DECEMBER 2011
SCALE: 1"=20'
DRAWN BY: S&A
DESIGN: BRG
REVIEWED: BRG
JOB NO: 1132-11
DWG: 1132UTLIS

5 OF 6