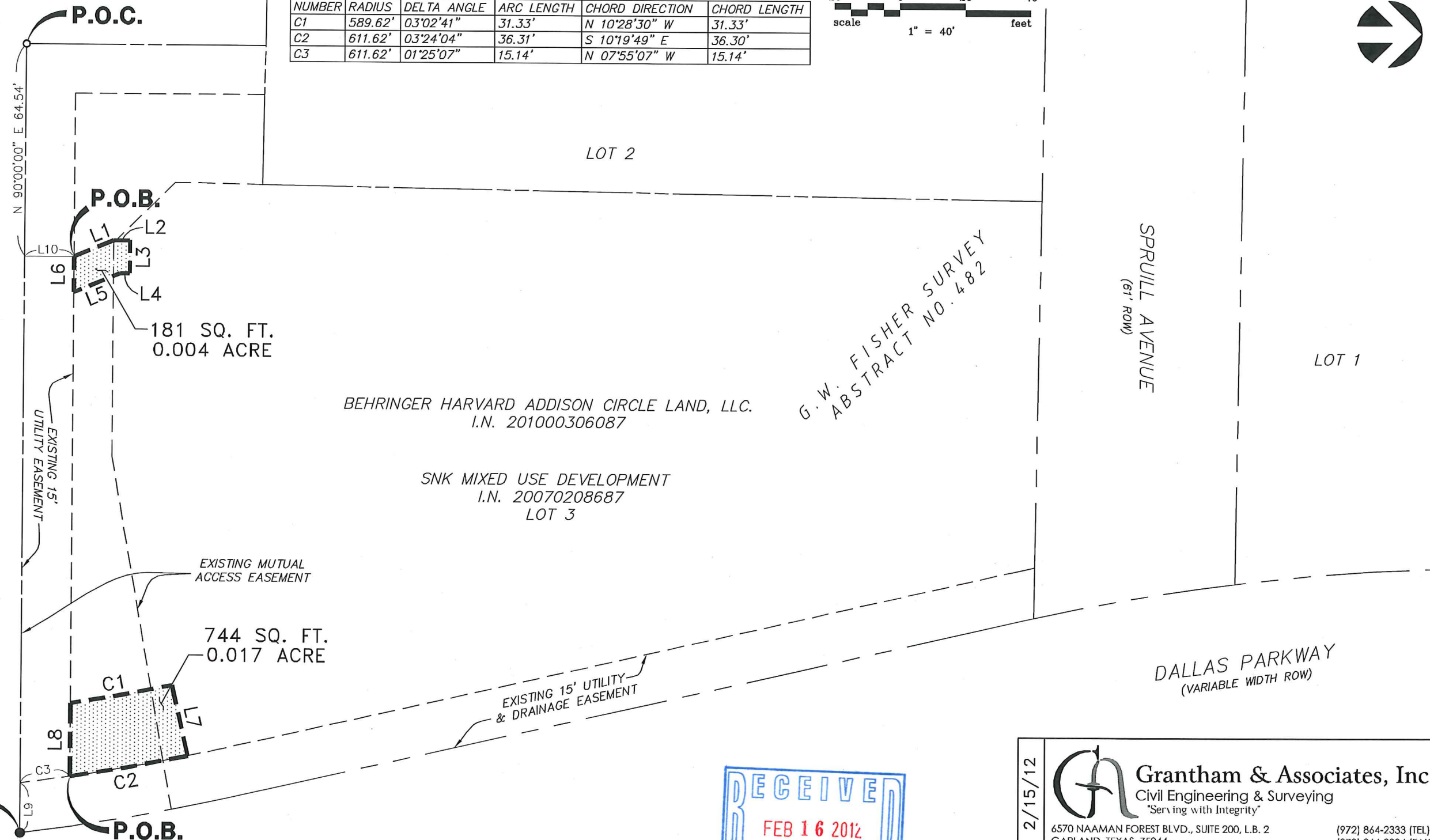
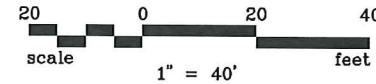


NOTE:

THE BEARINGS ON THIS PLAT ARE BASED ON THE PLAT OF SNK MIXED USE DEVELOPMENT, AN ADDITION TO THE TOWN OF ADDISON, ACCORDING TO THE MAP THEREOF RECORDED IN INSTRUMENT NUMBER 20070208687 OF THE MAP RECORDS OF DALLAS COUNTY, TEXAS.

CURVE TABLE:

NUMBER	RADIUS	DELTA ANGLE	ARC LENGTH	CHORD DIRECTION	CHORD LENGTH
C1	589.62'	03°02'41"	31.33'	N 10°28'30" W	31.33'
C2	611.62'	03°24'04"	36.31'	S 10°19'49" E	36.30'
C3	611.62'	01°25'07"	15.14'	N 07°55'07" W	15.14'



OPUS ADDITION
D.N. 201000085949

BEHRINGER HARVARD ADDISON CIRCLE LAND, LLC.
I.N. 201000306087

SNK MIXED USE DEVELOPMENT
I.N. 20070208687
LOT 3

G.W. FISHER SURVEY
ABSTRACT NO. 482

SPRULL AVENUE
(61' ROW)

LOT 1

DALLAS PARKWAY
(VARIABLE WIDTH ROW)

LINE TABLE:

NUMBER	DIRECTION	DISTANCE
L1	N 22°30'00" W	13.00'
L2	N 00°00'00" W	4.99'
L3	N 90°00'00" E	10.00'
L4	S 00°00'00" E	3.00'
L5	S 22°30'00" E	15.15'
L6	S 90°00'00" W	10.82'
L7	N 77°07'13" E	22.00'
L8	S 90°00'00" W	22.26'
L9	S 90°00'00" W	15.12'
L10	N 00°00'00" W	15.00'

LEGEND


○ = IRON ROD SET. IRON RODS, WHERE INDICATED, UNLESS OTHERWISE NOTED, ARE TO BE SET AND ARE IRON RODS, ONE HALF INCH IN DIAMETER, TWENTY FOUR INCHES LONG WITH A PLASTIC CAP PLACED ON THE TOP BEARING THE INITIALS G&A.

● = 1/2" IRON ROD FOUND



MATTHEW A. KIRK

R.P.L.S. NO. 5711

1132ESMT01	2/15/12	 Grantham & Associates, Inc. Civil Engineering & Surveying "Serving with Integrity" 6570 NAAMAN FOREST BLVD., SUITE 200, L.B. 2 GARLAND, TEXAS 75044 (972) 864-2333 (TEL) (972) 864-2334 (FAX)
	WATERLINE EASEMENTS EXHIBIT "C"	
TOWN OF ADDISON		