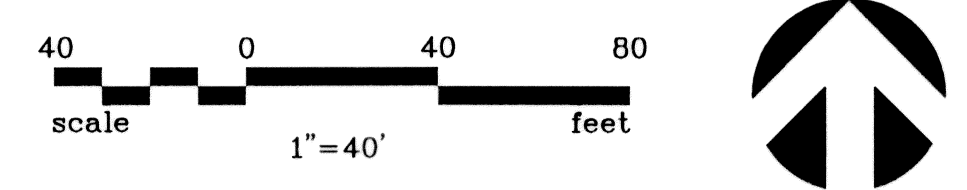
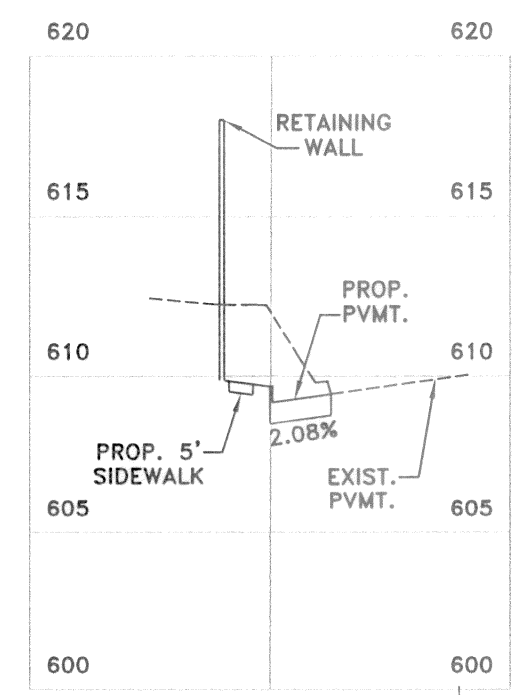


NO.	DATE	REVISION	APPROV.
1	11/16/07	REVISED ISLAND & ISLAND CURB DETAIL	BRG
2	1/20/09	ADDED RAMP DETAIL	BRG
3	2/6/09	REVISED SPECTRUM DRIVE PARKING & ADDED TREE WELLS	BRG
4	11/3/09	REVISED PER CONTRACTOR MARKUP	BRG



SECTION 'A-A'  
1"=40'(H)1"=6'(V)

SAWCUT & REMOVE 124 L.F. EXIST. CURB & 256 S.Y. SIDEWALK & PAVEMENT. CONST. LONGITUDINAL BUTT JOINT 24" #6 DOWEL DRILLED 12" INTO EXIST. SLAB ON 24" CENTERS & EPOXY GROUT

SAWCUT & REMOVE 15 L.F. EXIST. CURB & 34 S.Y. PAVEMENT. CONST. LONGITUDINAL BUTT JOINT 24" #6 DOWEL DRILLED 12" INTO EXIST. SLAB ON 24" CENTERS & EPOXY GROUT

SAWCUT & REMOVE 70 L.F. EXIST. CURB & 68 S.Y. SIDEWALK & PAVEMENT. CONST. LONGITUDINAL BUTT JOINT 24" #6 DOWEL DRILLED 12" INTO EXIST. SLAB ON 24" CENTERS & EPOXY GROUT

SAWCUT & REMOVE 212 L.F. EXIST. CURB & 467 S.Y. SIDEWALK & PAVEMENT. CONST. LONGITUDINAL BUTT JOINT 24" #6 DOWEL DRILLED 12" INTO EXIST. SLAB ON 24" CENTERS & EPOXY GROUT

SAWCUT & REMOVE 70 L.F. EXIST. CURB & 68 S.Y. SIDEWALK & PAVEMENT. CONST. LONGITUDINAL BUTT JOINT 24" #6 DOWEL DRILLED 12" INTO EXIST. SLAB ON 24" CENTERS & EPOXY GROUT

SAWCUT & REMOVE 104 L.F. EXIST. CURB & 244 S.Y. SIDEWALK & PAVEMENT. CONST. LONGITUDINAL BUTT JOINT 24" #6 DOWEL DRILLED 12" INTO EXIST. SLAB ON 24" CENTERS & EPOXY GROUT

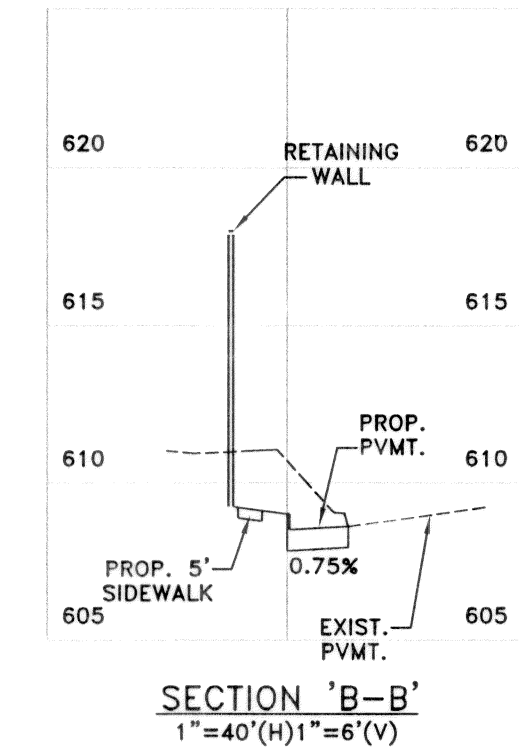
RELOCATE THE EXISTING PEDESTRIAN LIGHT INTO ISLAND

**!!CAUTION!!**  
CONTRACTOR SHALL COORDINATE WITH TXU TO DISCONNECT POWER TO PEDESTRIAN LIGHT PRIOR TO REMOVING FOUNDATION.

**!!CAUTION!!**  
CONTRACTOR SHALL COORDINATE WITH TXU TO DISCONNECT POWER TO PEDESTRIAN LIGHT PRIOR TO REMOVING FOUNDATION.

- NOTES:**
- REFER TO LANDSCAPE AND ARCHITECTURAL PLANS FOR ALL SIDEWALK, BARRIER FREE RAMP AND TDLR DETAILS.
  - ALL WALKS SHALL BE ADA COMPATIBLE WITH MAXIMUM 2% CROSS SLOPE AND 5% LONGITUDINAL SLOPE. REFER TO LANDSCAPE PLANS FOR DETAILS.
  - ALL HANDICAP SPACES SHALL BE MAXIMUM 2% CROSS SLOPE IN ALL DIRECTIONS
  - THE ARCHITECT WILL MAKE THE TDLR SUBMITTAL.
  - ALL EXCESS PAVERS SHALL BE SALVAGED AND RETURNED TO THE TOWN OF ADDISON SERVICE CENTER.
  - REFER TO DIMENSIONAL CONTROL PLAN FOR STRIPING.
  - TWO HANDICAP SPACES IN SPECTRUM DRIVE AND FOUR HANDICAP SPACES INSIDE THE PARKING GARAGES HAVE BEEN PROVIDED PER ARCHITECT WHO VERIFIED TSA REQUIREMENTS.

**RECORD DRAWING**  
BASED ON CONTRACTOR MARKUPS  
NOT FIELD SURVEY



SECTION 'B-B'  
1"=40'(H)1"=6'(V)

SIDEWALK GRADE TO MATCH GRADE ON SPRULL AVE, GREATER THAN 5%.

SIDEWALK GRADE TO MATCH GRADE ON SPRULL AVE, GREATER THAN 5%.

SAWCUT, REMOVE & REPLACE 48 L.F. EXIST. CURB & GUTTER CONST. LONGITUDINAL BUTT JOINT 24" #6 DOWEL DRILLED 12" INTO EXIST. SLAB ON 24" CENTERS & EPOXY GROUT

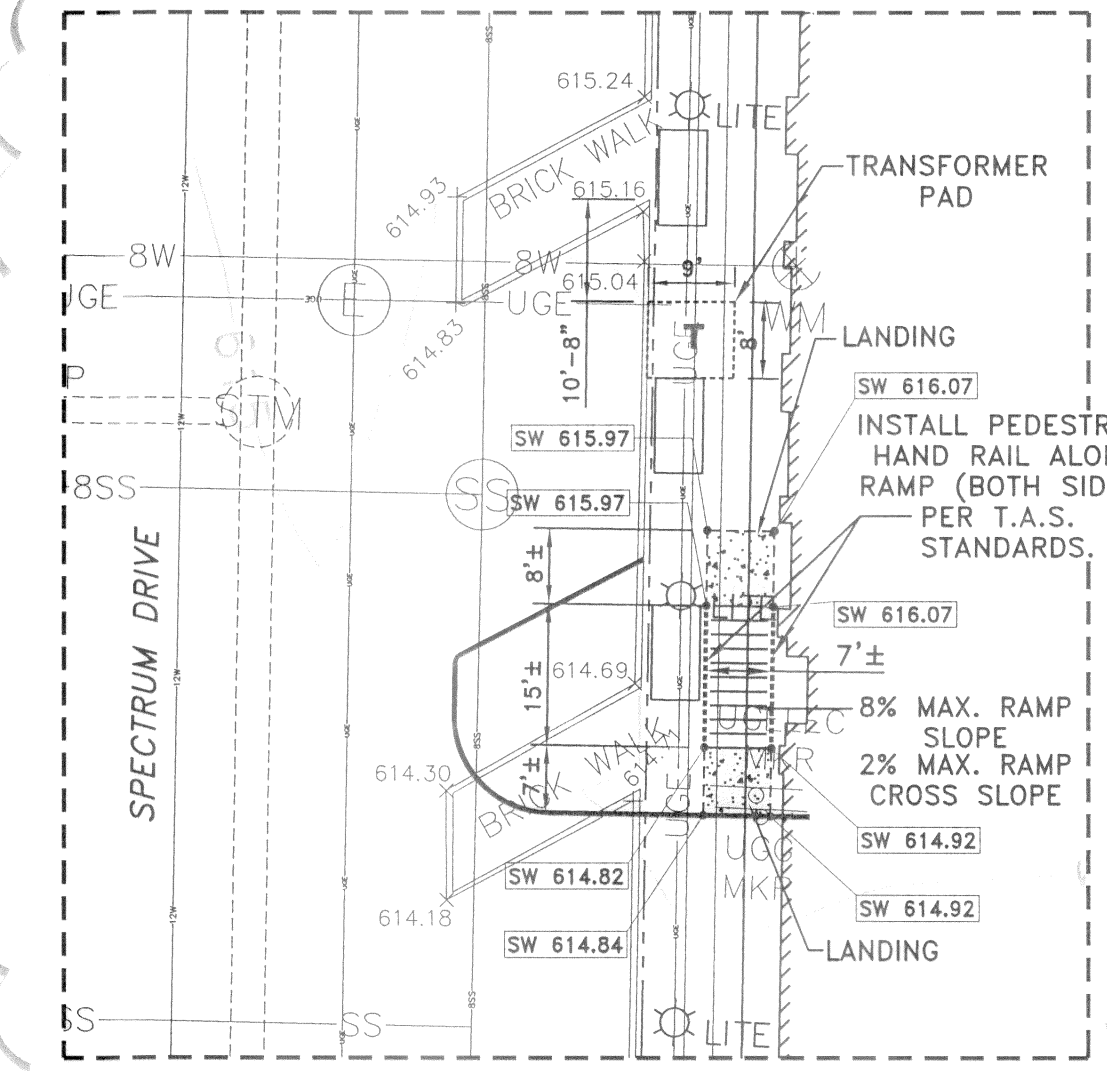
INSTALL ONE WAY R6-1R

TYPE 'C' BRICK PAVERS ON CONCRETE BASE. SEE DETAIL SHEET 1

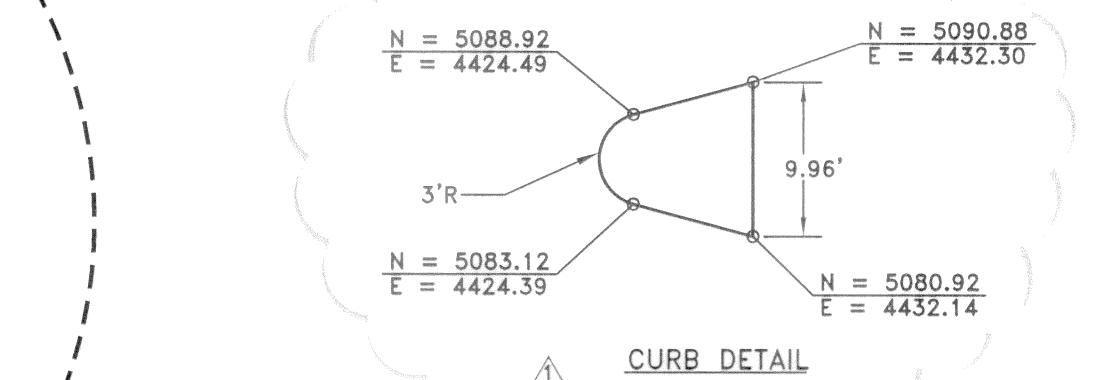
INSTALL ONE WAY R6-1R

INSTALL ONE WAY R6-1R

INSTALL ONE WAY R6-1R



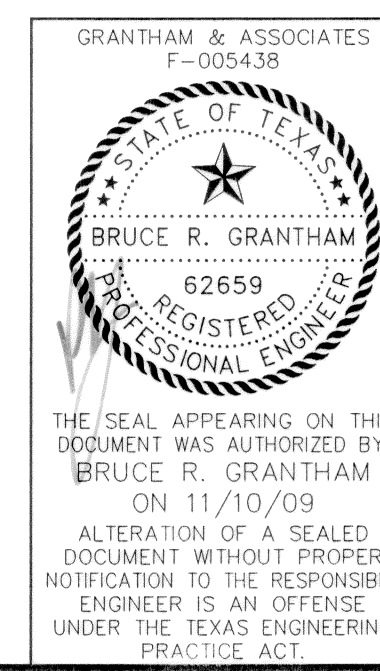
RAMP DETAIL  
1"=20'



CURB DETAIL

**LEGEND:**

	EXISTING CONTOUR		6" REINFORCED CONCRETE PAVEMENT PER TYPICAL SECTION
	PROPOSED CONTOUR		10" PSI REINFORCED CONCRETE PAVEMENT PER TYPICAL SECTION
	PROPOSED TOP OF CURB ELEVATION		SIDEWALK PAVEMENT (REFER TO LANDSCAPE PLAN)
	PROPOSED GUTTER ELEVATION		PAVEMENT AND SIDEWALK REMOVAL LIMITS
	PROPOSED TOP OF PAVEMENT		TEMPORARY ACCESS ASPHALT PAVEMENT 2" HMAAC TYPE 'D' SURFACE, 4" TYPE 'B' BASE
	PROPOSED TOP OF WALL ELEVATION		BFR BARRIER FREE RAMP
	PROPOSED BOTTOM OF WALL ELEVATION		
	EXISTING ELEVATION		
	REMOVE EXISTING STREET OR PEDESTRIAN LIGHT FOUNDATION, SALVAGE LIGHT AND RETURN TO THE TOWN OF ADDISON SERVICE CENTER		
	EXISTING STREET OR PEDESTRIAN LIGHT TO REMAIN		



DATE: FEBRUARY 2009 SCALE: 1"=40' JOB NO.: 1057-06  
DRAWN: G&A DESIGN: BRG REVIEWED: BRG DWG: 1057GRADING

MIXED USE DEVELOPMENT  
TOWN OF ADDISON  
PAVING & GRADING PLAN

**SNK DEVELOPMENT INC.**

g&a Grantham & Associates Civil Engineering

1919 S. SHILOH ROAD, SUITE 440, L.B. GARLAND, TEXAS 75042 (972) 864-2333 (TEL) (972) 864-2334 (FAX)

SHT. 10 OF 11