

ENGINEERING CONSTRUCTION PLANS FOR

OSTEOMED CORPORATION

GRADING, PAVING AND DRAINAGE IMPROVEMENTS THE TOWN OF ADDISON, TEXAS

B19-2

OSTEOMED As-Built 11/02

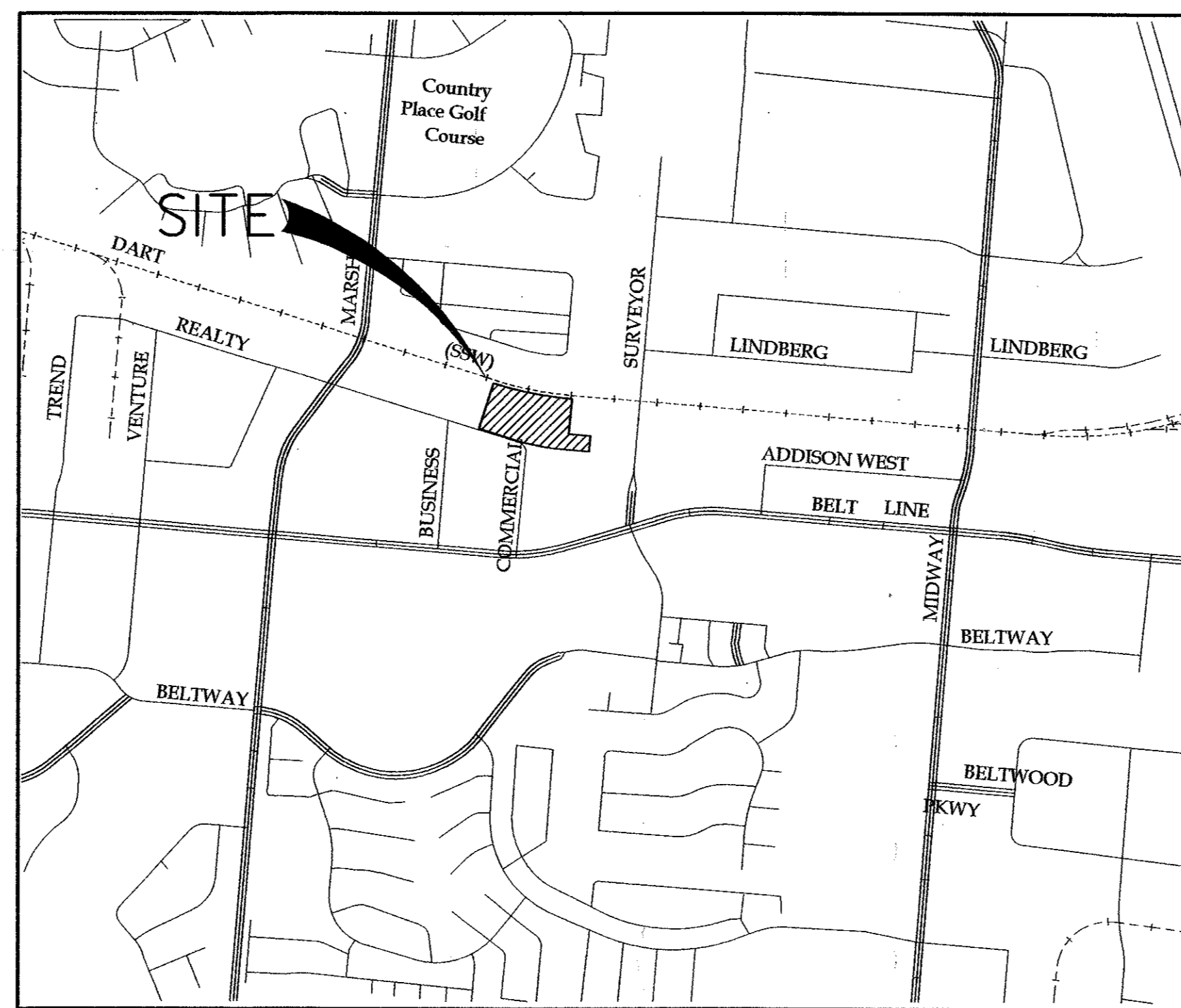
38835 ARAPAHO

OWNER

OSTEOMED CORPORATION
3750 REALTY ROAD
ADDISON, TX 75001

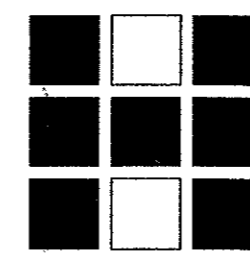
ENGINEER

HALFF ASSOCIATES, INC.
8616 NORTHWEST PLAZA DR.
DALLAS, TX. 75225
(214) 346-6200
CONTACT: DENNIS J. CHOVAN, P.E.



LOCATION MAP

NOT TO SCALE



Halff Associates

ENGINEERS . ARCHITECTS . SCIENTISTS . PLANNERS . SURVEYORS
8616 NORTHWEST PLAZA DRIVE

SHEET INDEX

C0.0	COVER SHEET
C1.1	EROSION CONTROL PLAN
C1.2	EROSION CONTROL NOTES AND DETAILS
C1.3	EROSION CONTROL NOTES
C1.4	EROSION CONTROL NOTES
C3.1	DRAINAGE AREA MAP
C3.2	GRADING PLAN
C4.1	PAVING AND DIMENSIONAL CONTROL PLAN
C4.2	PAVING AND DIMENSIONAL CONTROL DETAILS
C5.1	STORM DRAINAGE CALCULATIONS
C5.2	STORM DRAINAGE PLAN
C5.3	STORM DRAINAGE PROFILES
C5.4	STORM DRAINAGE DETAILS
C6.1	WATER AND WASTEWATER PLAN
* L1.1	LANDSCAPE PLAN
* L1.2	LANDSCAPE SPECIFICATIONS
* L1.3	IRRIGATION SPECIFICATIONS

* PREPARED BY SMR
LANDSCAPE ARCHITECTURE

"AS-BUILT PLAN BASED ON CONTRACTOR'S RECORD DRAWINGS"