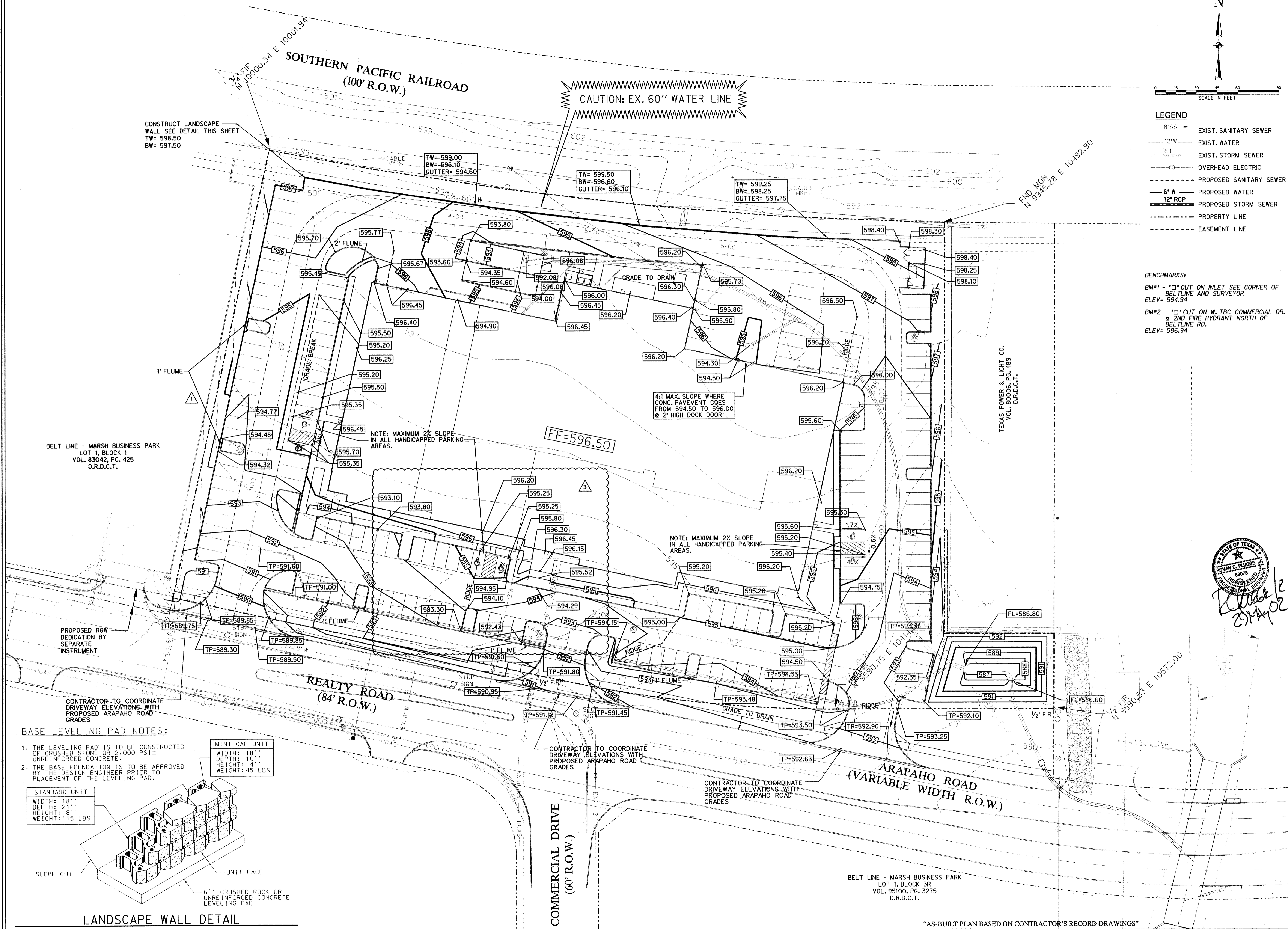


LEGEND

- 8" SS - EXIST. SANITARY SEWER
- 12" W - EXIST. WATER
- RCP - EXIST. STORM SEWER
- - OVERHEAD ELECTRIC
- - PROPOSED SANITARY SEWER
- 6" W - PROPOSED WATER
- 12" RCP - PROPOSED STORM SEWER
- - - - - PROPERTY LINE
- - - - - EASEMENT LINE

BENCHMARKS:

- BM#1 - "X" CUT ON INLET SEE CORNER OF BELT LINE AND SURVEYOR ELEV= 594.94
- BM#2 - "X" CUT ON W. TBC COMMERCIAL DR. @ 2ND FIRE HYDRANT NORTH OF BELT LINE RD. ELEV= 586.94



CONSTRUCT LANDSCAPE WALL SEE DETAIL THIS SHEET
TW= 598.50
BW= 597.50

CAUTION: EX. 60" WATER LINE

4:1 MAX. SLOPE WHERE CONC. PAVEMENT GOES FROM 594.50 TO 596.00 @ 2' HIGH DOCK DOOR

NOTE: MAXIMUM 2% SLOPE IN ALL HANDICAPPED PARKING AREAS.

NOTE: MAXIMUM 2% SLOPE IN ALL HANDICAPPED PARKING AREAS.

BELT LINE - MARSH BUSINESS PARK
LOT 1, BLOCK 1
VOL. 83042, PG. 425
D.R.D.C.T.

TEXAS POWER & LIGHT CO.
VOL. 80006, PG. 489
D.R.D.C.T.

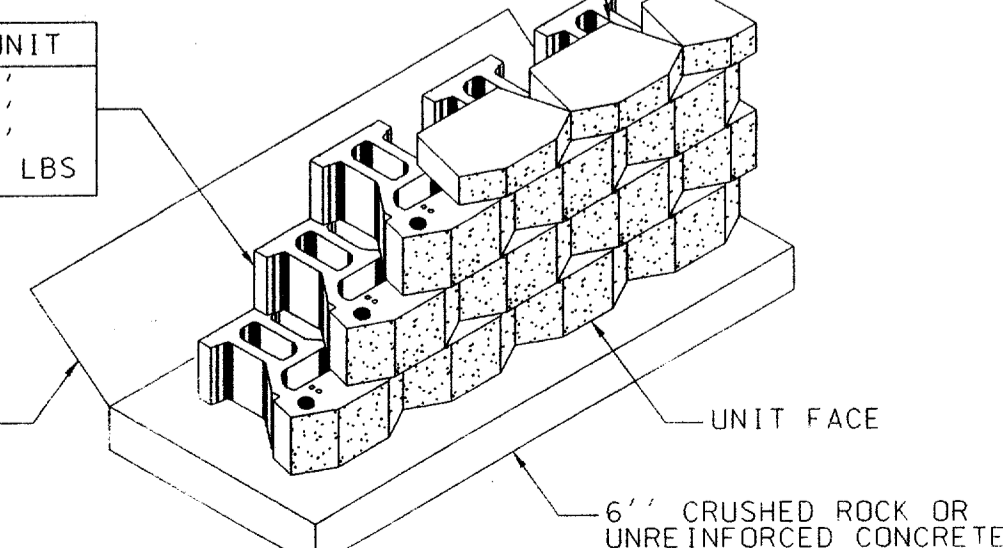
Handwritten signature and date:
2/14/02

BASE LEVELING PAD NOTES:

1. THE LEVELING PAD IS TO BE CONSTRUCTED OF CRUSHED STONE OR 2,000 PSI± UNREINFORCED CONCRETE.
2. THE BASE FOUNDATION IS TO BE APPROVED BY THE DESIGN ENGINEER PRIOR TO PLACEMENT OF THE LEVELING PAD.

MINI CAP UNIT
WIDTH: 18"
DEPTH: 10"
HEIGHT: 4"
WEIGHT: 45 LBS

STANDARD UNIT
WIDTH: 18"
DEPTH: 21"
HEIGHT: 8"
WEIGHT: 115 LBS



LANDSCAPE WALL DETAIL

CONTRACTOR TO COORDINATE DRIVEWAY ELEVATIONS WITH PROPOSED ARAPAHO ROAD GRADES

CONTRACTOR TO COORDINATE DRIVEWAY ELEVATIONS WITH PROPOSED ARAPAHO ROAD GRADES

CONTRACTOR TO COORDINATE DRIVEWAY ELEVATIONS WITH PROPOSED ARAPAHO ROAD GRADES

BELT LINE - MARSH BUSINESS PARK
LOT 1, BLOCK 3R
VOL. 95100, PG. 3275
D.R.D.C.T.

"AS-BUILT PLAN BASED ON CONTRACTOR'S RECORD DRAWINGS"

OSTEOMED CORPORATION FACILITY
ADDISON, TEXAS

Half Associates, Inc.
ENGINEERS • ARCHITECTS • SCIENTISTS • PLANNERS • SURVEYORS
866 NORTHWEST PLAZA DRIVE
DALLAS, TEXAS 75225
TEL (214) 346-6200
FAX (214) 739-0095

Project No.	AVO # 20079	
Issue:	05/13/02	
Revisions:		
No.	Date	Description
1	09/30/02	GRADE CHANGES AT NORTH SIDE OF BLDG.
2	6/20/2002	AS PER SITE CHANGES
3	5/29/2002	MOVE H.C. PARKING @ MAIN ENTRANCE OF BLDG.
Drawn by:	DD	
Checked by:	DJC	
Sheet Title:	GRADING PLAN	
Sheet Number:	C3.2	