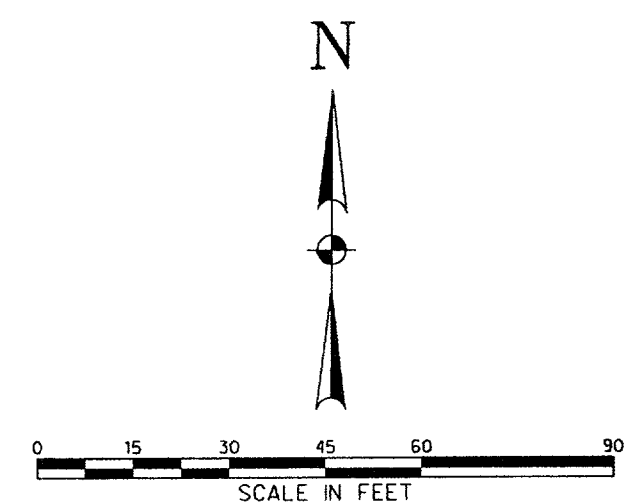


SOUTHERN PACIFIC RAILROAD  
(100' R.O.W.)



**LEGEND**

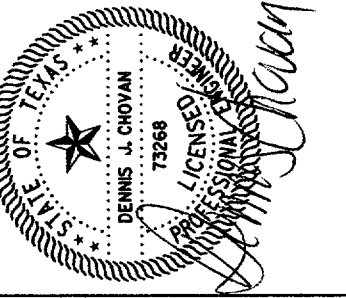
- 8"SS EXIST. SANITARY SEWER
- 12" W EXIST. WATER
- RCP EXIST. STORM SEWER
- OVERHEAD ELECTRIC
- PROPOSED SANITARY SEWER
- 6" W PROPOSED WATER
- 12" RCP PROPOSED STORM SEWER
- PROPERTY LINE
- EASEMENT LINE

**BENCHMARKS:**

- BM#1 - "D" CUT ON INLET SEE CORNER OF BELTLINE AND SURVEYOR  
ELEV= 594.94
- BM#2 - "D" CUT ON W. TBC COMMERCIAL DR. @ 2ND FIRE HYDRANT NORTH OF BELTLINE RD.  
ELEV= 586.94

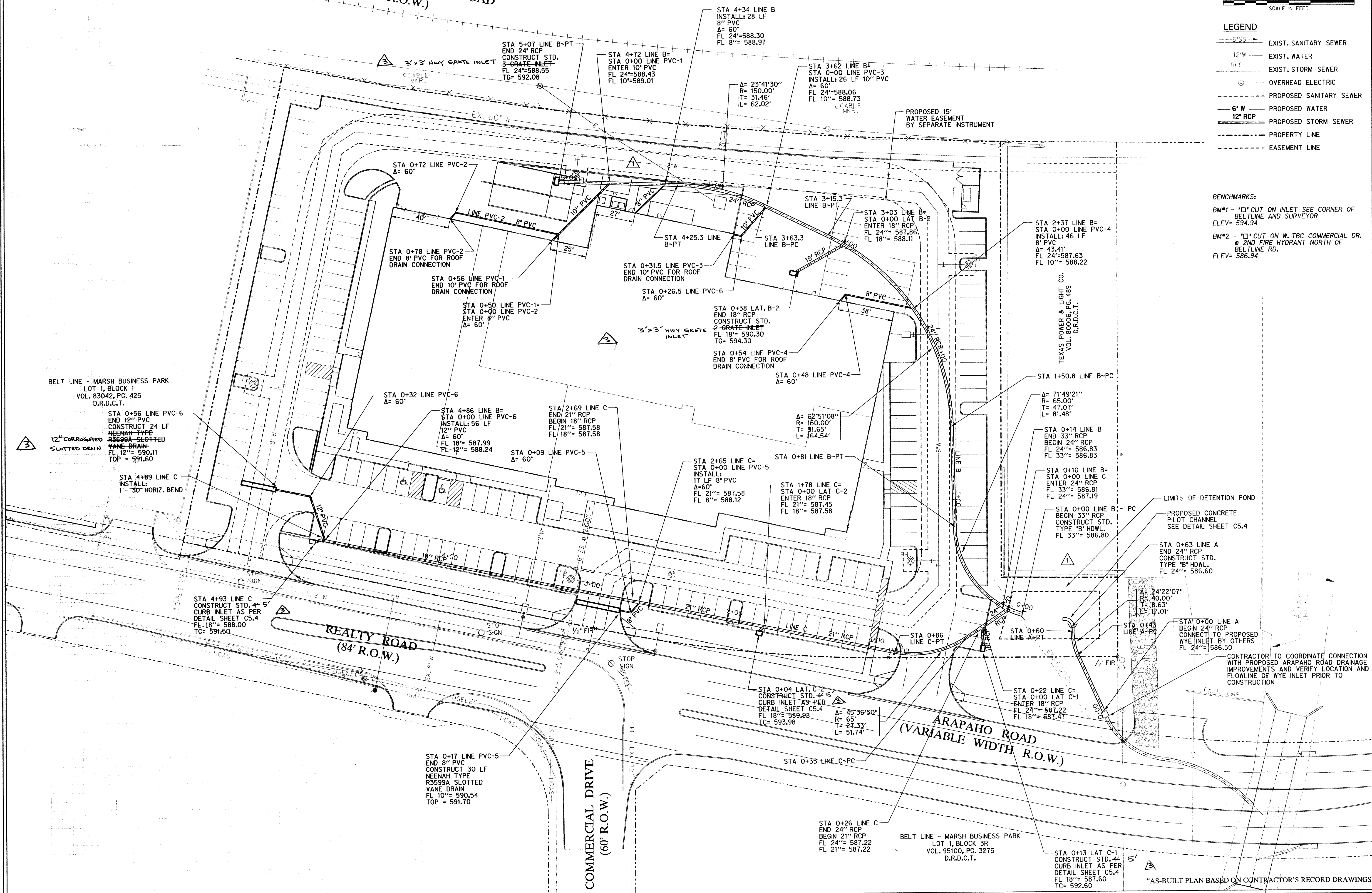
OSTEOMED CORPORATION FACILITY  
ADDISON, TEXAS

THE SEAL APPEARING ON THIS DOCUMENT WAS AUTHORIZED BY THE BOARD OF PROFESSIONAL ENGINEERS AND SURVEYORS OF THE STATE OF TEXAS. ANY ALTERATION OF THIS DOCUMENT WITHOUT THE SIGNATURE OF THE REGISTERED PROFESSIONAL ENGINEER OR SURVEYOR IS UNLAWFUL. THE RECORD COPY OF THIS DRAWING IS ON FILE AT: 8816 NORTHWEST PLAZA DRIVE, DALLAS, TEXAS 75225



**Half Associates, Inc.**  
ENGINEERS • ARCHITECTS • SCIENTISTS • PLANNERS • SURVEYORS  
8806 NORTHWEST PLAZA DRIVE  
DALLAS, TEXAS 75225  
FAX (214) 798-0085

Project No. AVO # 20079	
Issued: 05/13/02	
Revisions:	
No.	Date Description
1	05/13/02 INLET RELOCATION
2	5/20/2002 AS PER SITE CHANGES
3	4/19/01 "AS-BUILT" CHANGES
Drawn by: DD	
Checked by: DJC	
Sheet Title	
<b>STORM DRAINAGE PLAN</b>	
<b>C5.2</b>	
Sheet Number	



"AS-BUILT PLAN BASED ON CONTRACTOR'S RECORD DRAWINGS"

BELT LINE - MARSH BUSINESS PARK  
LOT 1, BLOCK 1  
VOL. 83042, PG. 425  
D.R.D.C.T.

TEXAS POWER & LIGHT CO.  
VOL. 80006, PG. 489  
D.I.A.D.C.T.

BELT LINE - MARSH BUSINESS PARK  
LOT 1, BLOCK 3R  
VOL. 95100, PG. 3275  
D.R.D.C.T.