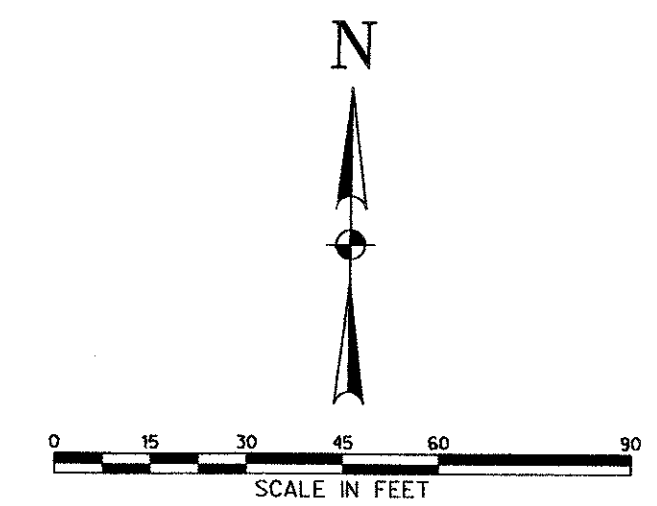


SOUTHERN PACIFIC RAILROAD  
(100' R.O.W.)

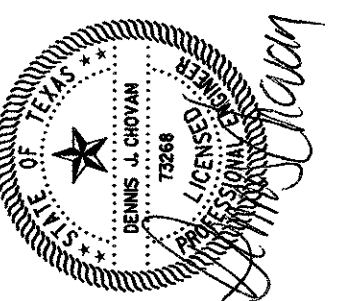


- LEGEND**
- 8"SS EXIST. SANITARY SEWER
  - 12"W EXIST. WATER
  - RCP EXIST. STORM SEWER
  - OVERHEAD ELECTRIC
  - PROPOSED SANITARY SEWER
  - 6" W PROPOSED WATER
  - 12" RCP PROPOSED STORM SEWER
  - PROPERTY LINE
  - EASEMENT LINE

**BENCHMARKS:**  
 BM#1 - "X" CUT ON INLET SEE CORNER OF BELTLINE AND SURVEYOR  
 ELEV= 594.94  
 BM#2 - "X" CUT ON W. TBC COMMERCIAL DR. @ 2ND FIRE HYDRANT NORTH OF BELTLINE RD.  
 ELEV= 586.94

OSTEOMED CORPORATION FACILITY  
 ADDISON, TEXAS

THE SEAL APPEARING ON THIS DOCUMENT WAS AUTHORIZED BY DENNIS J. CHAVAN, P.E., LICENSE NO. 05-21-02. PROPER NOTIFICATION TO THE RESPONSIBLE ENGINEER IS AN OBLIGATION UNDER THE TEXAS ENGINEERING PRACTICE ACT. AT THE OFFICES OF HALFF ASSOCIATES, INC., 8616 NORTHWEST PLAZA DRIVE, DALLAS, TEXAS 75225.

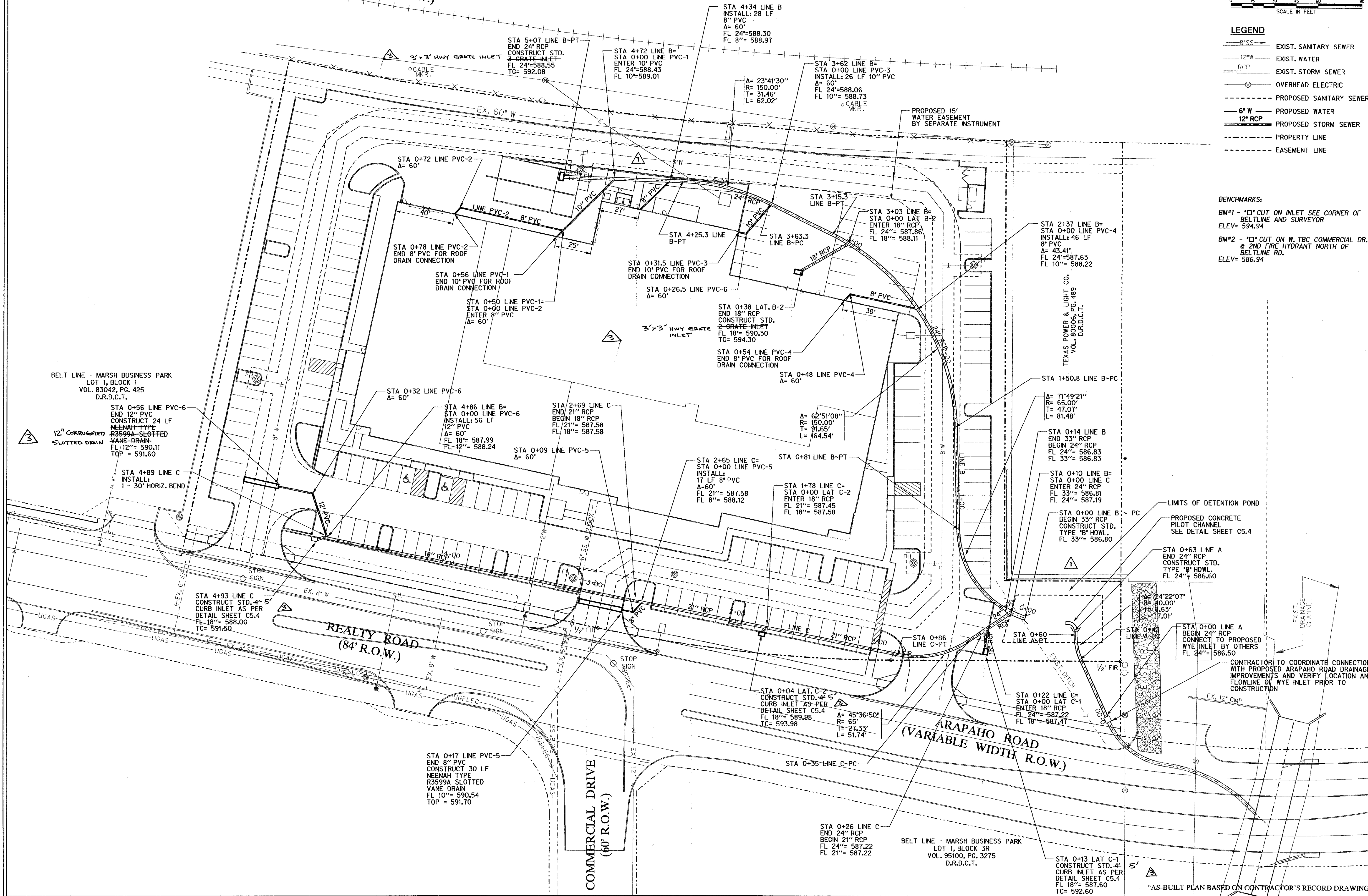


**Halff Associates, Inc.**  
 ENGINEERS • ARCHITECTS • SCIENTISTS • PLANNERS • SURVEYORS  
 8616 NORTHWEST PLAZA DRIVE  
 DALLAS, TEXAS 75225  
 TEL (214) 346-5000  
 FAX (214) 759-0995

Project No: AVO # 20079  
 Revised: 05/19/02

No.	Date	Description
1	09/19/02	INLET RELOCATION
2	6/20/2002	AS PER SITE CHANGES
3	11/11/02	"AS-BUILT" CHANGES

Drawn by: DD  
 Checked by: DAC  
 Sheet Title: **STORM DRAINAGE PLAN**  
**C5.2**  
 Sheet Number



"AS-BUILT PLAN BASED ON CONTRACTOR'S RECORD DRAWINGS"