

Project No: AVO # 20079
Issued: 06/19/07

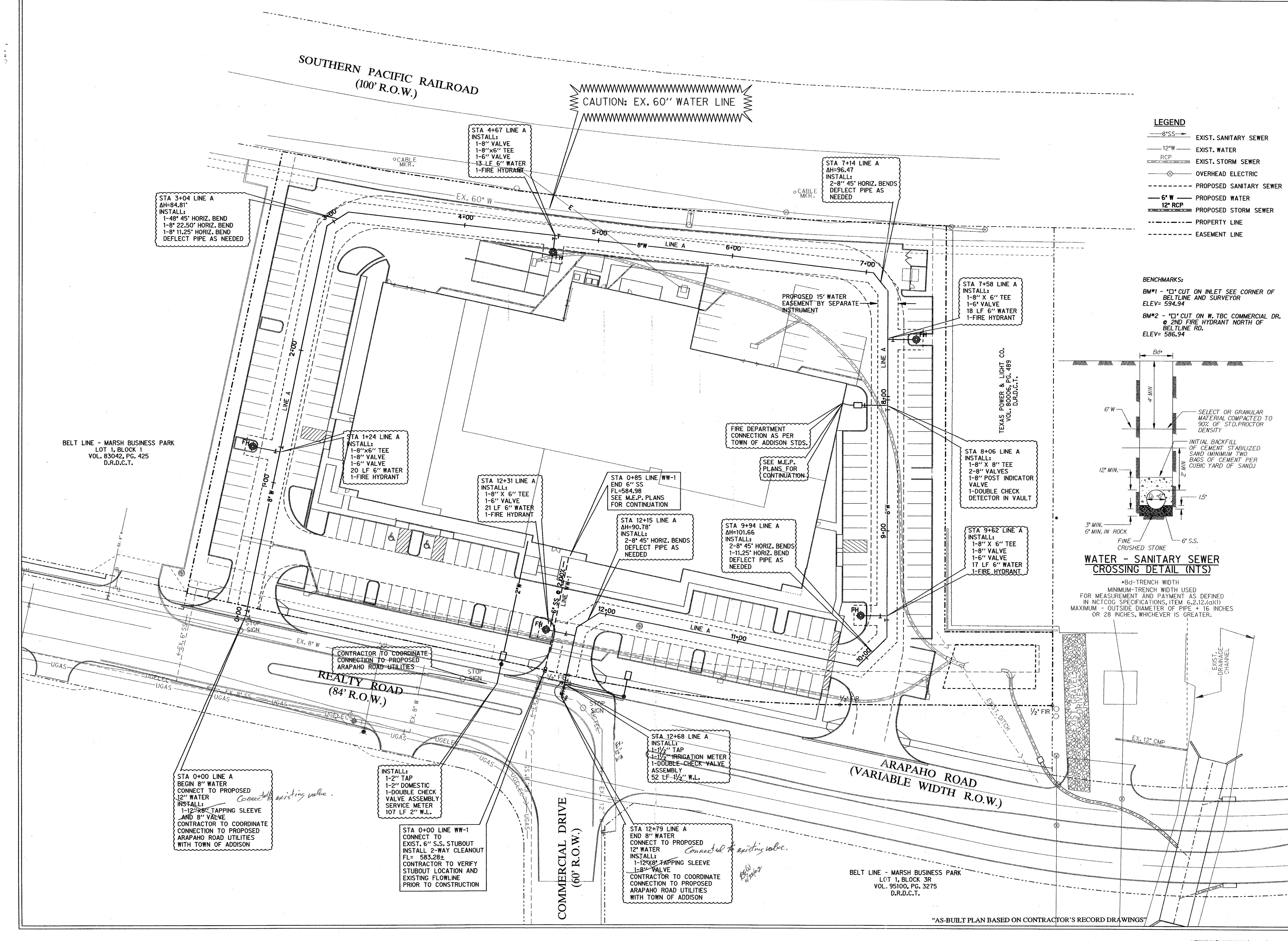
Revisions:

No.	Date	Description

Drawn by: DJC
Checked by: DJC

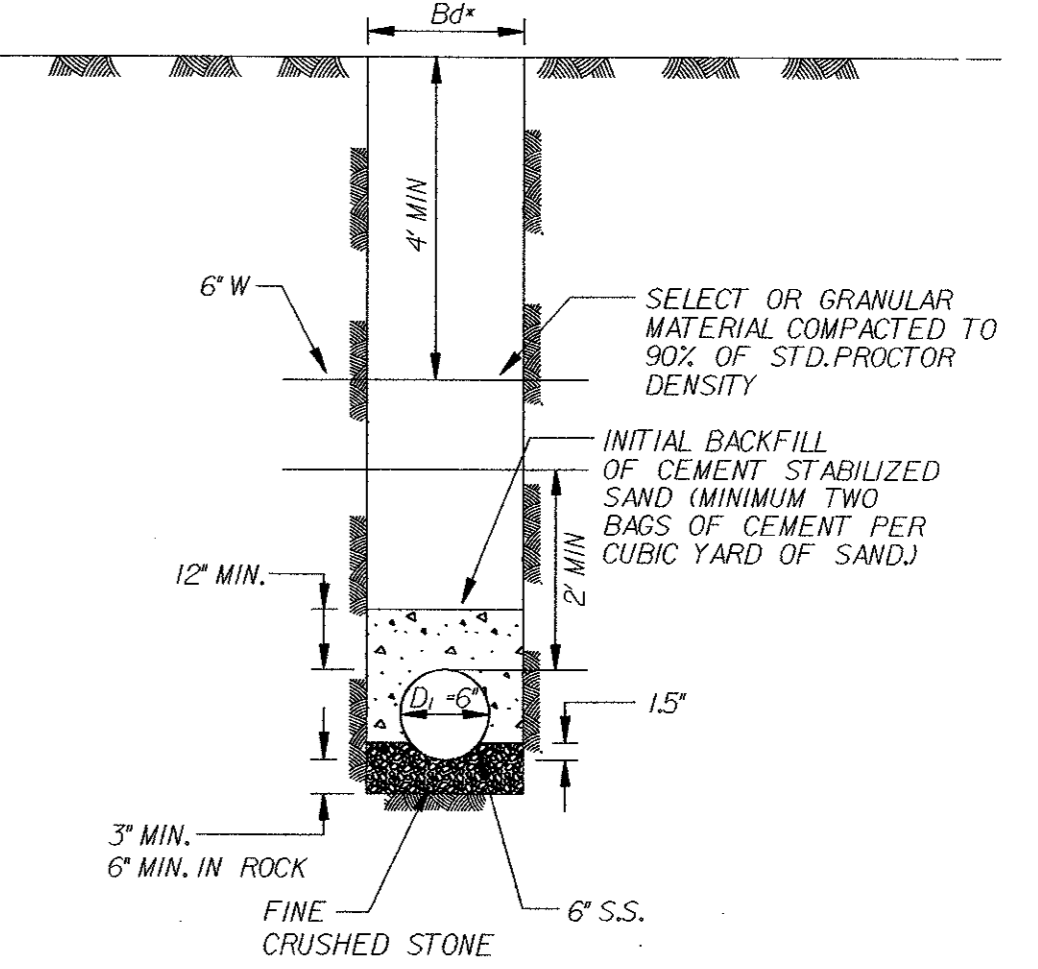
Sheet Title: **WATER AND WASTEWATER PLAN**

Sheet Number: **C6.1**



- LEGEND**
- EXIST. SANITARY SEWER
 - EXIST. WATER
 - EXIST. STORM SEWER
 - OVERHEAD ELECTRIC
 - PROPOSED SANITARY SEWER
 - PROPOSED WATER
 - PROPOSED STORM SEWER
 - PROPERTY LINE
 - EASEMENT LINE

BENCHMARKS:
 BM#1 - "X" CUT ON INLET SEE CORNER OF BELTLINE AND SURVEYOR ELEV= 594.94
 BM#2 - "X" CUT ON W. TBC COMMERCIAL DR. @ 2ND FIRE HYDRANT NORTH OF BELTLINE RD. ELEV= 586.94



WATER - SANITARY SEWER CROSSING DETAIL (NTS)

*Bd- TRENCH WIDTH
 MINIMUM- TRENCH WIDTH USED FOR MEASUREMENT AND PAYMENT AS DEFINED IN NCTCOG SPECIFICATIONS, ITEM 6.2.12.(a)(1) MAXIMUM - OUTSIDE DIAMETER OF PIPE + 16 INCHES OR 28 INCHES, WHICHEVER IS GREATER.

STA 3+04 LINE A
 ΔH=84.81'
 INSTALL:
 1-48' 45" HORIZ. BEND
 1-8" 22.50" HORIZ. BEND
 1-8" 11.25" HORIZ. BEND
 DEFLECT PIPE AS NEEDED

STA 4+67 LINE A
 INSTALL:
 1-8" VALVE
 1-8" X 6" TEE
 1-6" VALVE
 13 LF 6" WATER
 1-FIRE HYDRANT

STA 7+14 LINE A
 ΔH=96.47
 INSTALL:
 2-8" 45" HORIZ. BENDS
 DEFLECT PIPE AS NEEDED

STA 7+58 LINE A
 INSTALL:
 1-8" X 6" TEE
 1-6" VALVE
 18 LF 6" WATER
 1-FIRE HYDRANT

STA 1+24 LINE A
 INSTALL:
 1-8" X 6" TEE
 1-8" VALVE
 1-6" VALVE
 20 LF 6" WATER
 1-FIRE HYDRANT

STA 12+31 LINE A
 INSTALL:
 1-8" X 6" TEE
 1-8" VALVE
 21 LF 6" WATER
 1-FIRE HYDRANT

STA 0+85 LINE WW-1
 END 6" SS
 FL=584.98
 SEE M.E.P. PLANS FOR CONTINUATION

STA 12+15 LINE A
 ΔH=90.78'
 INSTALL:
 2-8" 45" HORIZ. BENDS
 DEFLECT PIPE AS NEEDED

STA 9+94 LINE A
 ΔH=101.66
 INSTALL:
 2-8" 45" HORIZ. BENDS
 1-11.25" HORIZ. BEND
 DEFLECT PIPE AS NEEDED

STA 8+06 LINE A
 INSTALL:
 1-8" X 8" TEE
 2-8" VALVES
 1-8" POST INDICATOR VALVE
 1-DOUBLE CHECK DETECTOR IN VAULT

STA 9+62 LINE A
 INSTALL:
 1-8" X 6" TEE
 1-8" VALVE
 1-6" VALVE
 17 LF 6" WATER
 1-FIRE HYDRANT

CONTRACTOR TO COORDINATE CONNECTION TO PROPOSED ARAPAHO ROAD UTILITIES

STA 12+68 LINE A
 INSTALL:
 1-1/2" TAP
 1-1/2" IRRIGATION METER
 1-DOUBLE CHECK VALVE ASSEMBLY
 52 LF 1-1/2" W.L.

STA 0+00 LINE A
 BEGIN 8" WATER
 CONNECT TO PROPOSED 12" WATER
 INSTALL:
 1-12" X 8" TAPPING SLEEVE AND 8" VALVE
 CONTRACTOR TO COORDINATE CONNECTION TO PROPOSED ARAPAHO ROAD UTILITIES WITH TOWN OF ADDISON

INSTALL:
 1-2" TAP
 1-2" DOMESTIC VALVE ASSEMBLY
 SERVICE METER
 107 LF 2" W.L.

STA 0+00 LINE WW-1
 CONNECT TO EXIST. 6" S.S. STUBOUT
 INSTALL 2-WAY CLEANOUT FL= 583.28±
 CONTRACTOR TO VERIFY STUBOUT LOCATION AND EXISTING FLOWLINE PRIOR TO CONSTRUCTION

STA 12+79 LINE A
 END 8" WATER
 CONNECT TO PROPOSED 12" WATER
 INSTALL:
 1-12" X 8" TAPPING SLEEVE
 1-8" VALVE
 CONTRACTOR TO COORDINATE CONNECTION TO PROPOSED ARAPAHO ROAD UTILITIES WITH TOWN OF ADDISON

BELT LINE - MARSH BUSINESS PARK
 LOT 1, BLOCK 3R
 VOL. 95100, PG. 3275
 D.R.D.C.T.

"AS-BUILT PLAN BASED ON CONTRACTOR'S RECORD DRAWINGS"

BELT LINE - MARSH BUSINESS PARK
 LOT 1, BLOCK 1
 VOL. 83042, PG. 425
 D.R.D.C.T.

REALTY ROAD
 (84' R.O.W.)

ARAPAHO ROAD
 (VARIABLE WIDTH R.O.W.)

COMMERCIAL DRIVE
 (60' R.O.W.)

SOUTHERN PACIFIC RAILROAD
 (100' R.O.W.)

CAUTION: EX. 60" WATER LINE

TEXAS POWER & LIGHT CO.
 VOL. 80006, PG. 489
 D.R.D.C.T.