

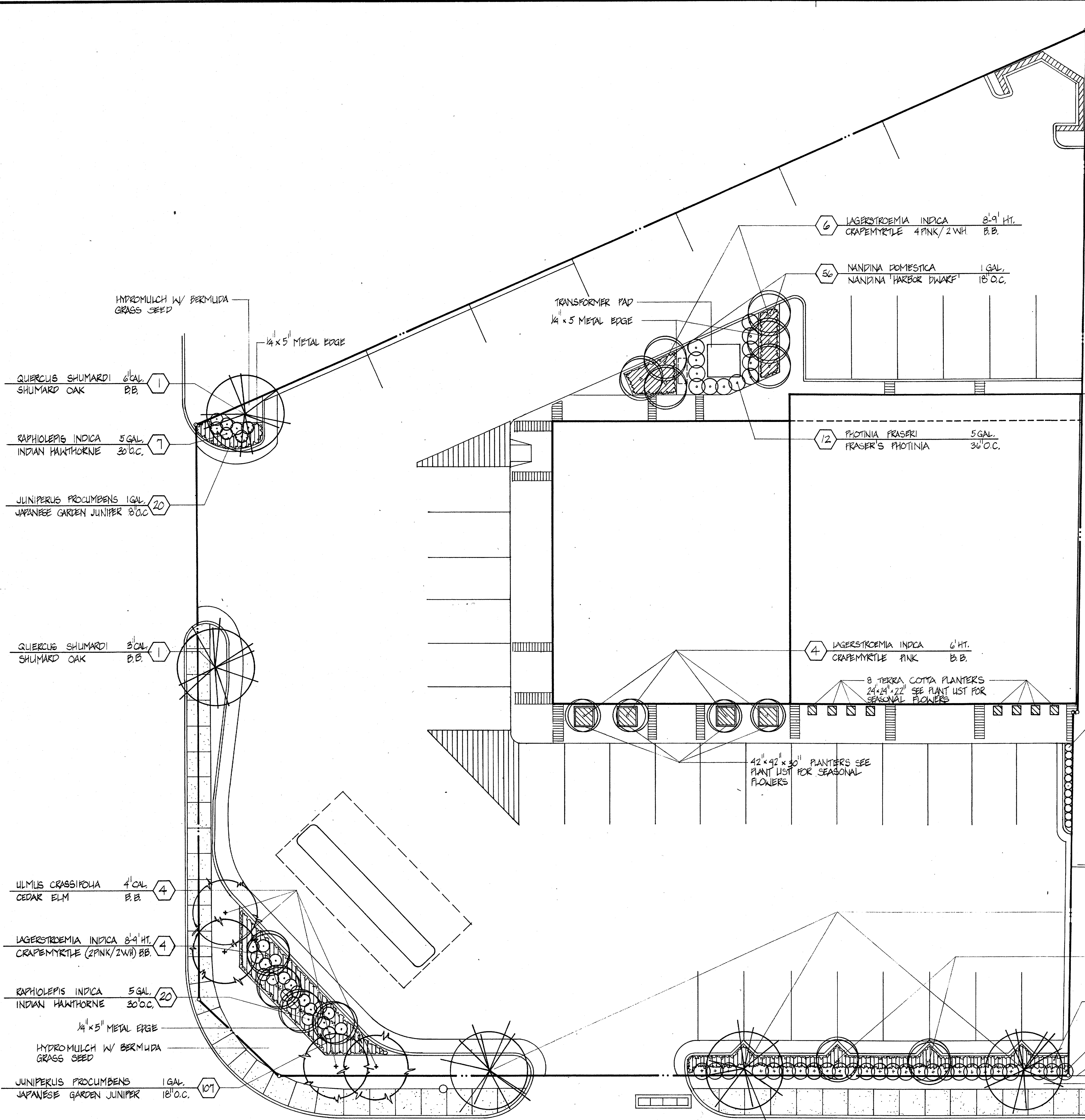
EDI ARCHITECTS, INC.
 ARCHITECTURE PLANNING ENGINEERING INTERIOR DESIGN
 8440 WALNUT HILL LANE
 SUITE 100 DALLAS, TEXAS 75231
 214 / 750-1848
 512 / 488-8908

Old Town 7-11/Strip Center
 Addison, Texas
 Ben Pinnell

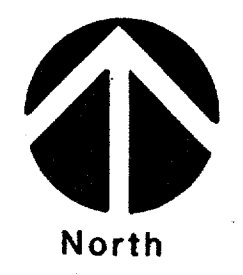
DATE:
 14 MAR 85

SHEET NO:
A1.4
 OF SHEETS
 JOB NO: 8431.00

PLANT LIST						
QTY.	BOTANICAL NAME	COMMON NAME	SIZE	COND	REMARKS	DETAIL
TREES						
4	Quercus shumardi	Shumard Oak	6" cal.	B.B.	Nursery grown, stake	
1	Quercus shumardi	Shumard Oak	3" cal.	B.B.	Nursery grown, see plan, stake	
4	Ulmus crassifolia	Cedar Elm	4" cal.	B.B.	Nursery grown, stake	
SMALL TREES						
12	Lagerstroemia indica	Crape Myrtle	8-9' ht.	B.B.	4 white/ pink, multi-trunk, heavy cane, nursery grown	
4	Lagerstroemia indica	Crape Myrtle	6' ht.	B.B.	for box planter, multi-trunk heavy cane, nursery grown, pink	
SHRUBS						
12	Photinia fraseri	Fraser's Photinia	5 gal.	Cont.	Plant in straight hedge line as shown, 3' O.C., nursery grown	
2	Raphiolepis indica	Indian Hawthorne 'Jack Evans'	5 gal.	Cont.	Random grouping as shown, 30" O.C., nursery grown	
26	Abelia grandiflora	Glossy Abelia	5 gal.	Cont.	Plant in a straight hedge line, 36" O.C., nursery grown	
GROUND COVERS/VINES						
215	Juniperus procumbens	Japanese Garden Juniper	1 gal.	Cont.	18" O.C., nursery grown	
11	Ficus Pumila	Fig Vine	1 gal.	Cont.	Clinging vine, plant close to wall, 18" O.C., nursery grown	
40	Nandina domestica	Nandina 'Harbor Dwarf'	1 gal.	Cont.	18"-24" O.C., nursery grown	



01 LANDSCAPE PLANTING PLAN
 SCALE 1" = 1'-0"



JOB NO SHEET

JOB NO SHEET

JOB NO SHEET