

① P.C. STA.
N. = 10998.05
E. = 12207.93

② P.T. STA.
N. = 11019.86
E. = 12236.52
R. = 73.81'

③ P.C. STA.
N. = 11066.44
E. = 12343.27

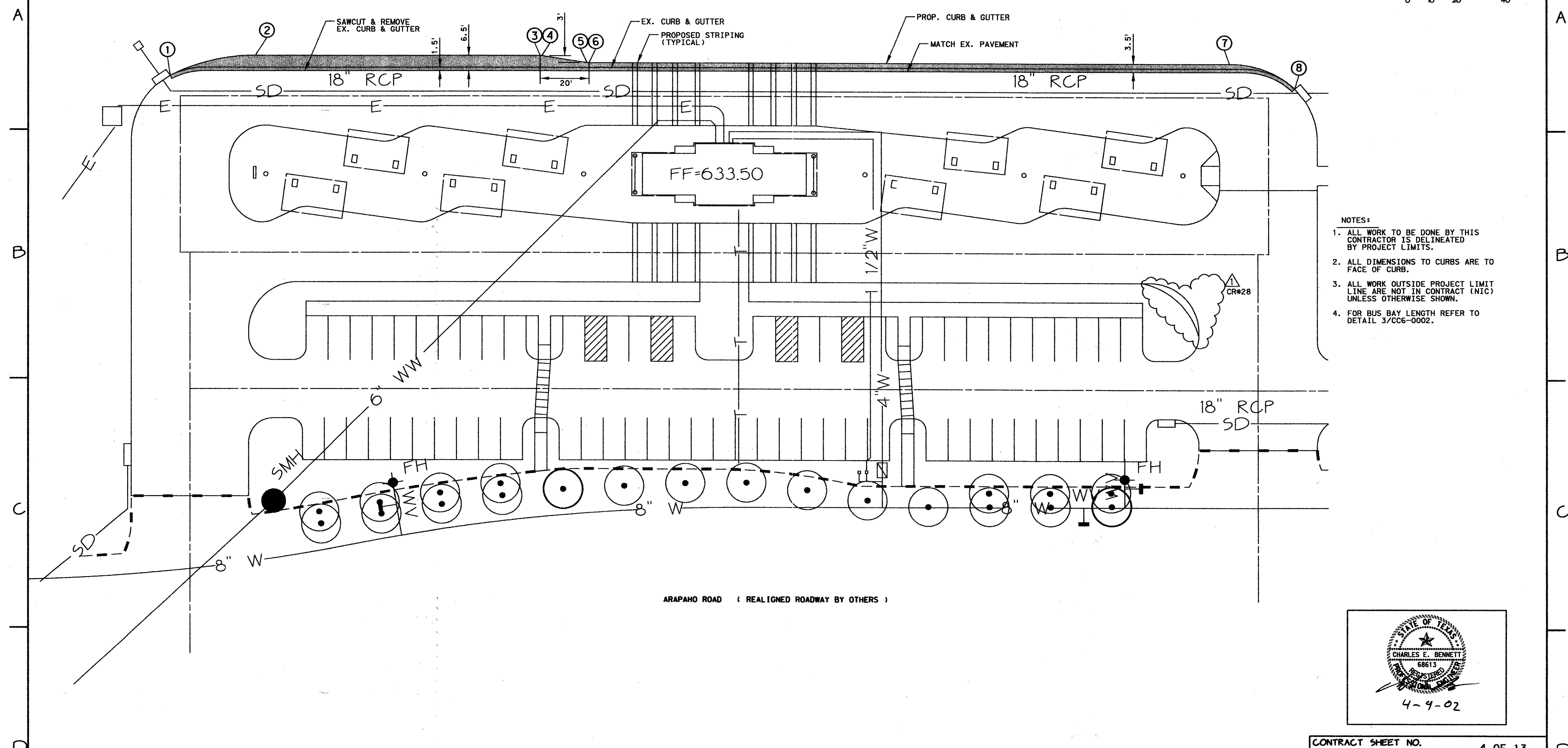
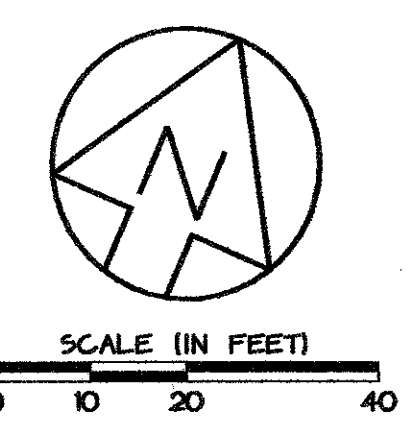
④ P.T. STA.
N. = 11066.69
E. = 12343.99
R. = 5'

⑤ P.C. STA.
N. = 11071.43
E. = 12362.09

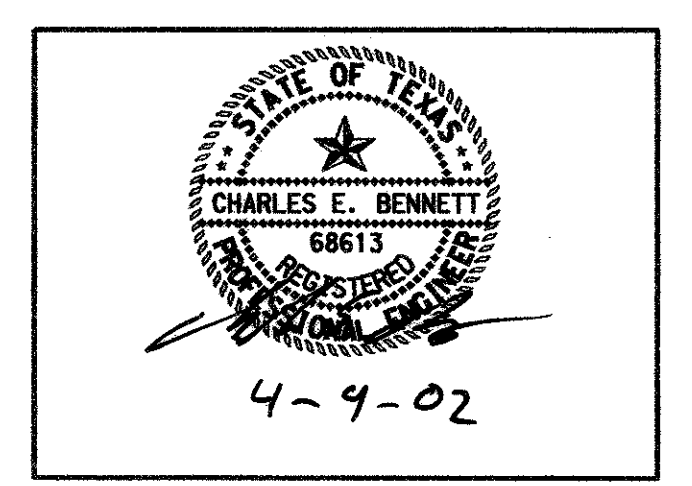
⑥ P.T. STA.
N. = 11071.68
E. = 12362.80
R. = 5'

⑦ P.C. STA.
N. = 11176.39
E. = 12602.82

⑧ P.T. STA.
N. = 11177.60
E. = 12631.36
R. = 38.38'



- NOTES:
1. ALL WORK TO BE DONE BY THIS CONTRACTOR IS DELINEATED BY PROJECT LIMITS.
 2. ALL DIMENSIONS TO CURBS ARE TO FACE OF CURB.
 3. ALL WORK OUTSIDE PROJECT LIMIT LINE ARE NOT IN CONTRACT (NIC) UNLESS OTHERWISE SHOWN.
 4. FOR BUS BAY LENGTH REFER TO DETAIL 3/CC6-0002.



CONTRACT SHEET NO. 4 OF 13

ADDISON
TRANSIT CENTER
EXISTING BUS LANE
EXPANSION

CONTRACT C-96000124-28 DWG. NO. REV 0

REV	DATE	DESCRIPTION	BY	ENG	CHK	APP	REV	DATE	DESCRIPTION	BY	ENG	CHK	APP

TURNER COLLIE & BRADEN INC.
LINDA TYCHER & ASSOCIATES
ARS ENGINEERS INC.

DART PROJECT

SCALE 1"=20'

DRAWN J. RATCLIFF
DESIGNED J. RATCLIFF
CHECKED G. BENNETT
IN CHARGE G. SHIPPY
DATE APRIL 2002