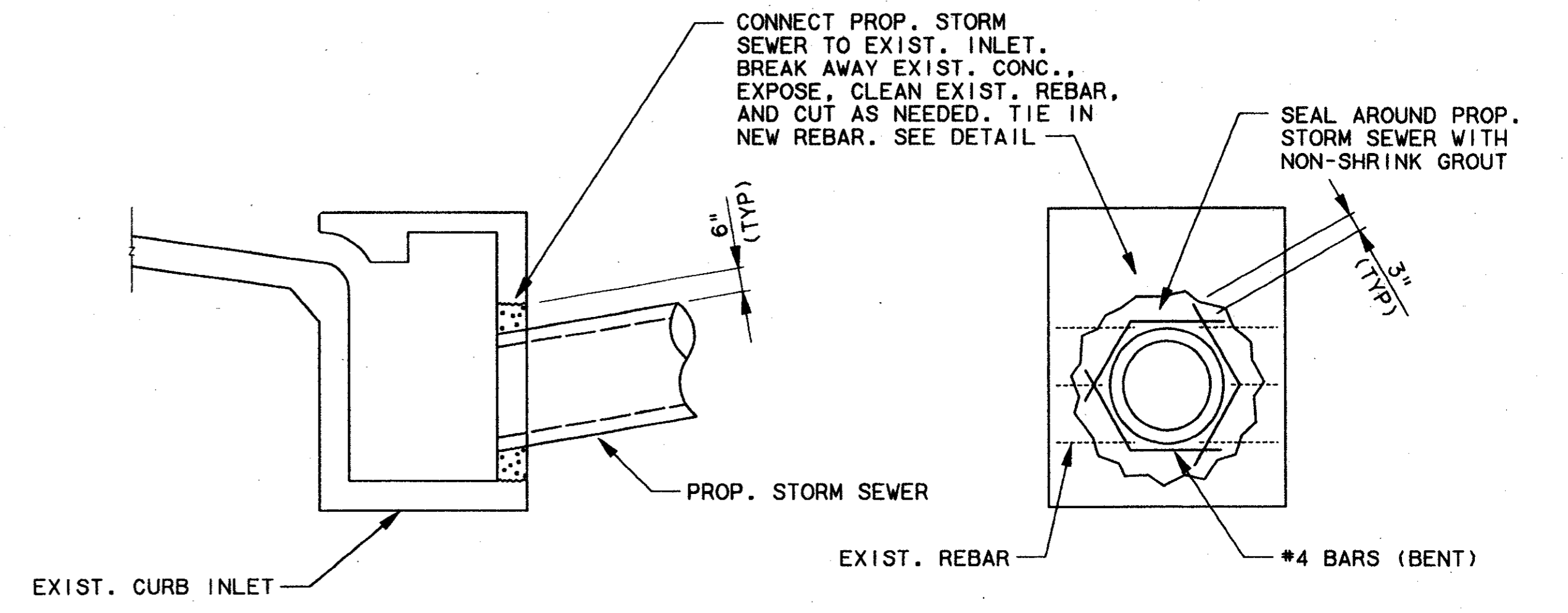
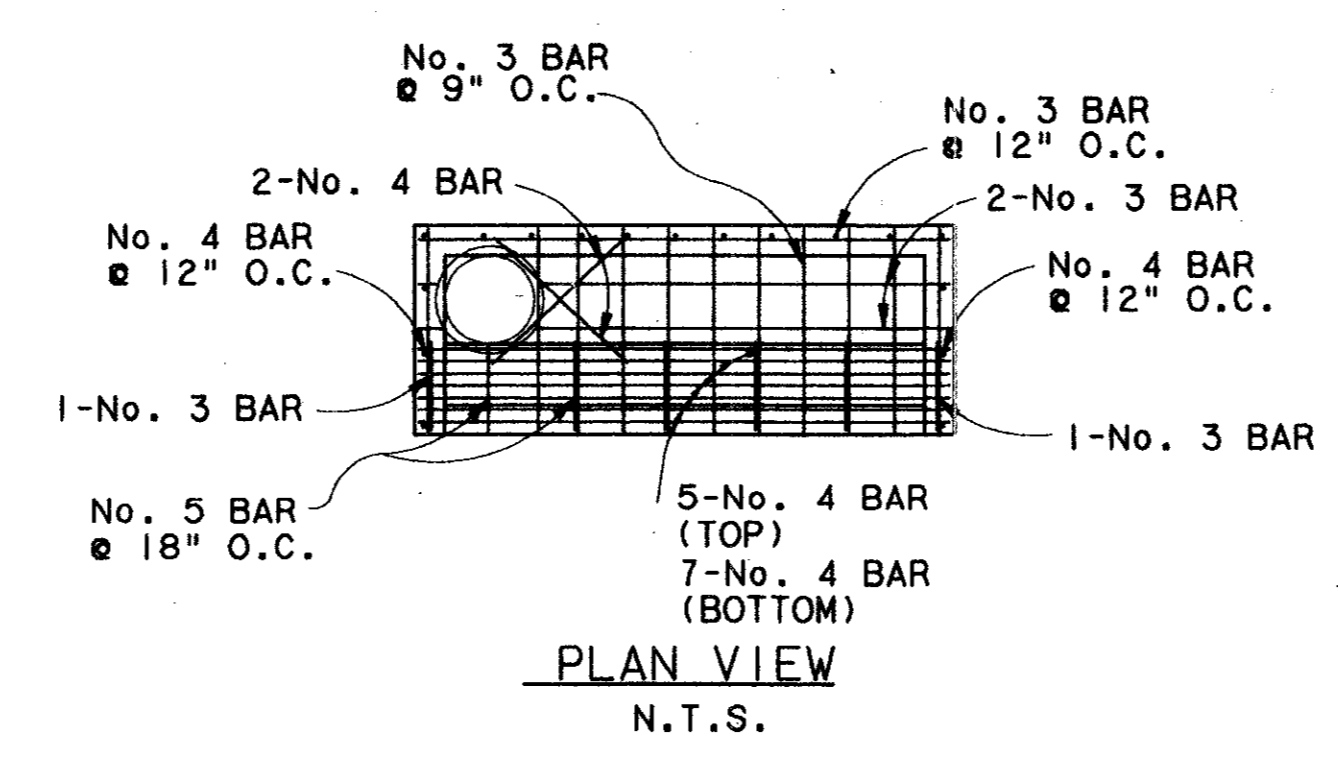
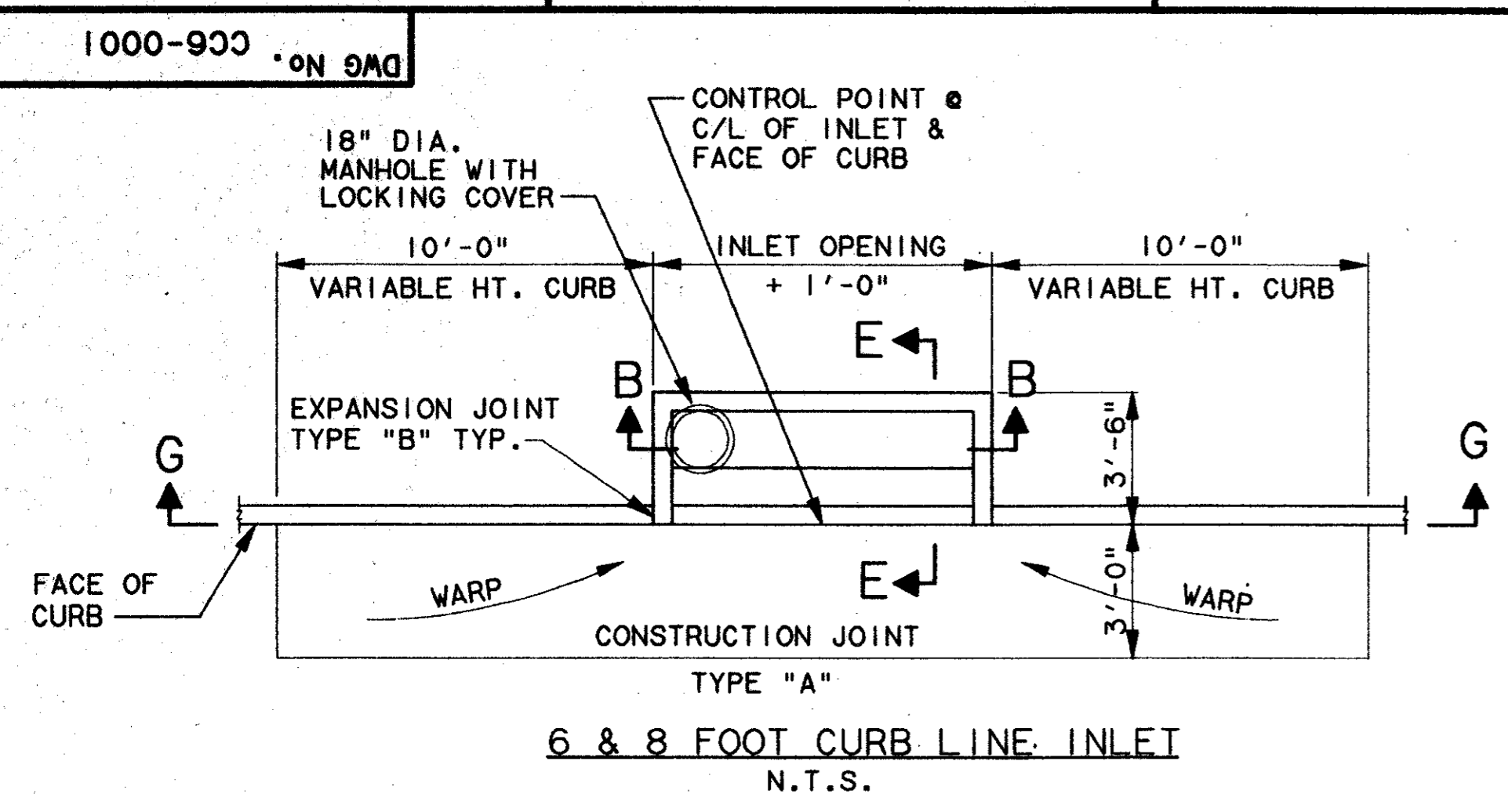
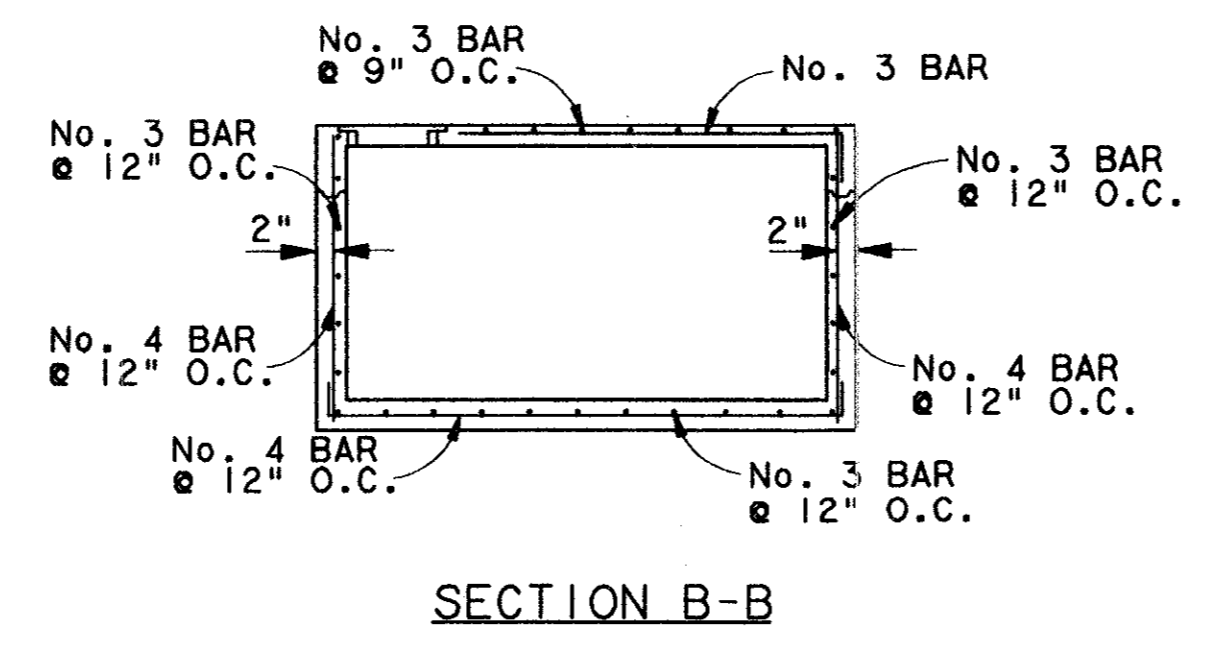
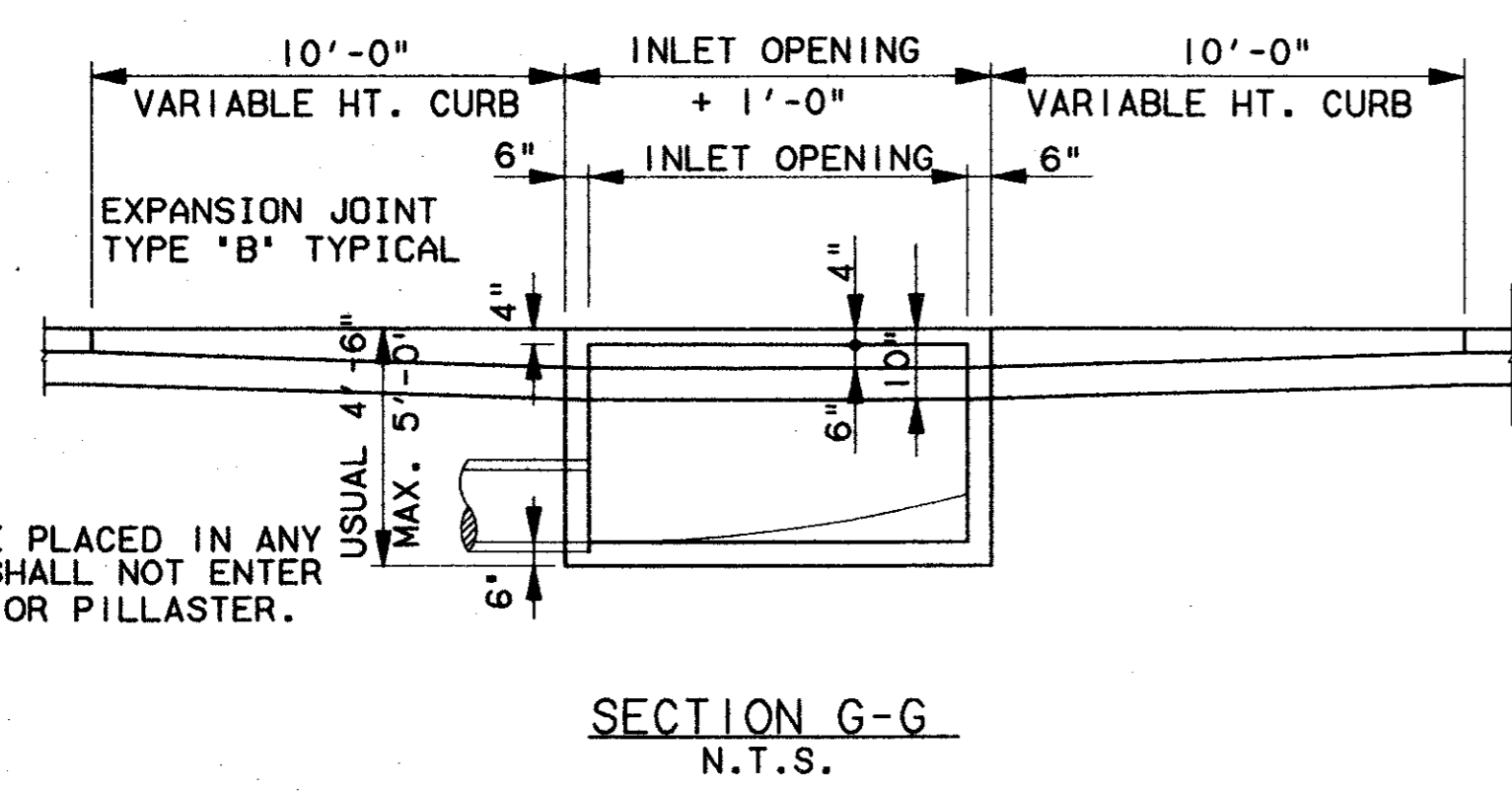


e:\194010.2\12\sh\1\def-1.001
13 AUG 97
DART-TBL
JAMES LANDRY

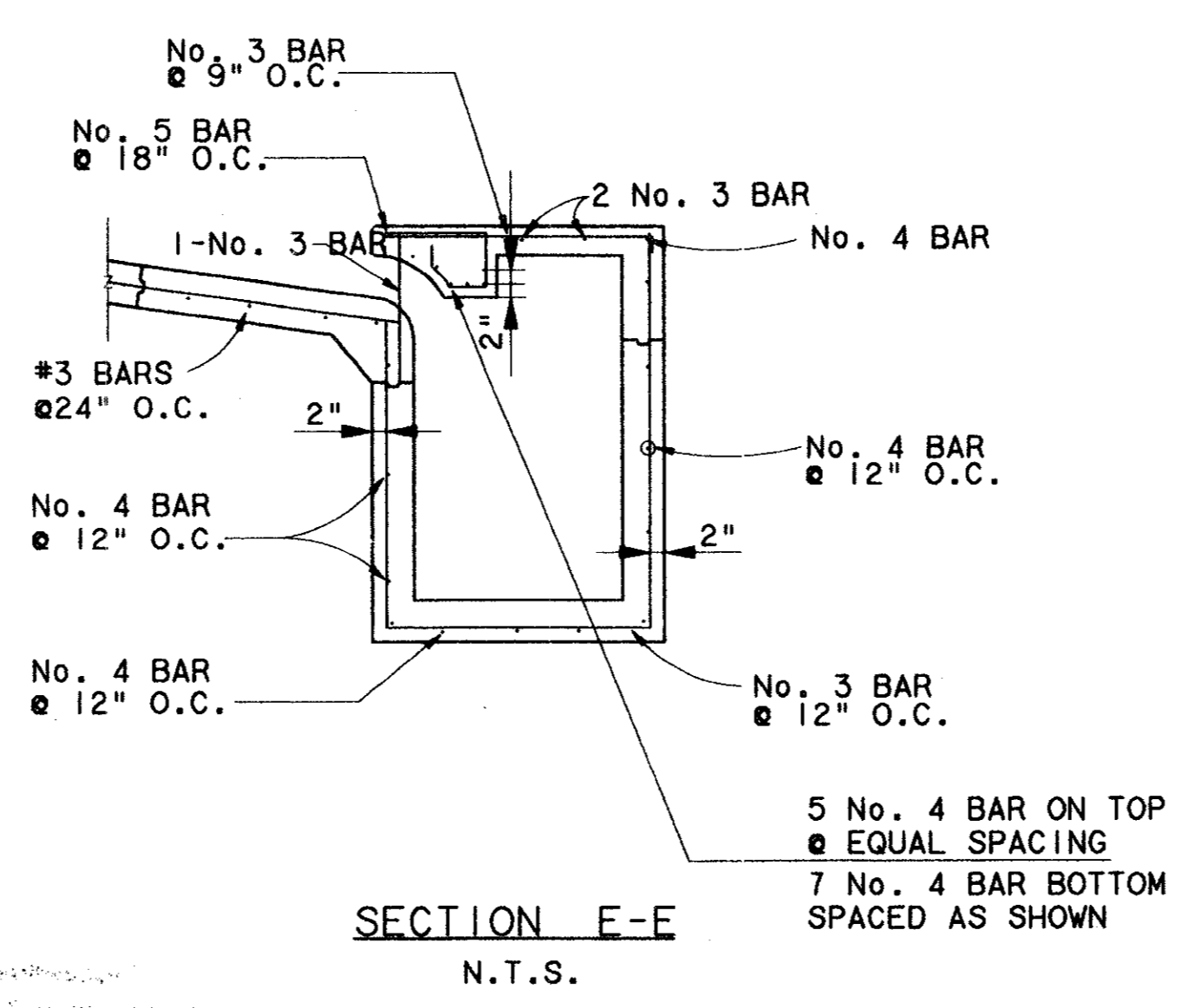


01 PIPE TO INLET CONNECTION DETAIL *
CC5-0001 N.T.S.

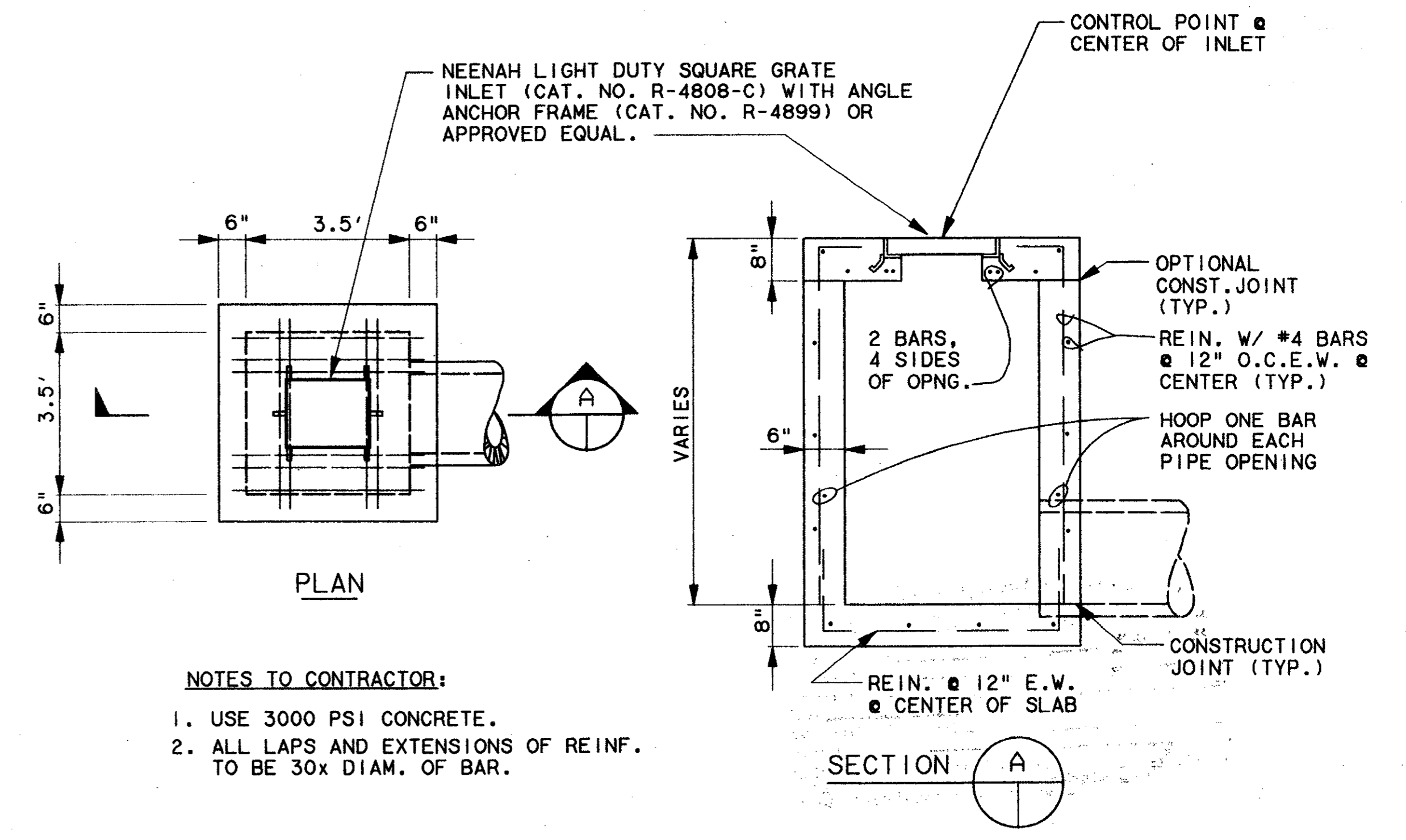


NOTE:
PIPE MAY BE PLACED IN ANY WALL, BUT SHALL NOT ENTER ANY CORNER OR PILLASTER.

SECTION G-G N.T.S.

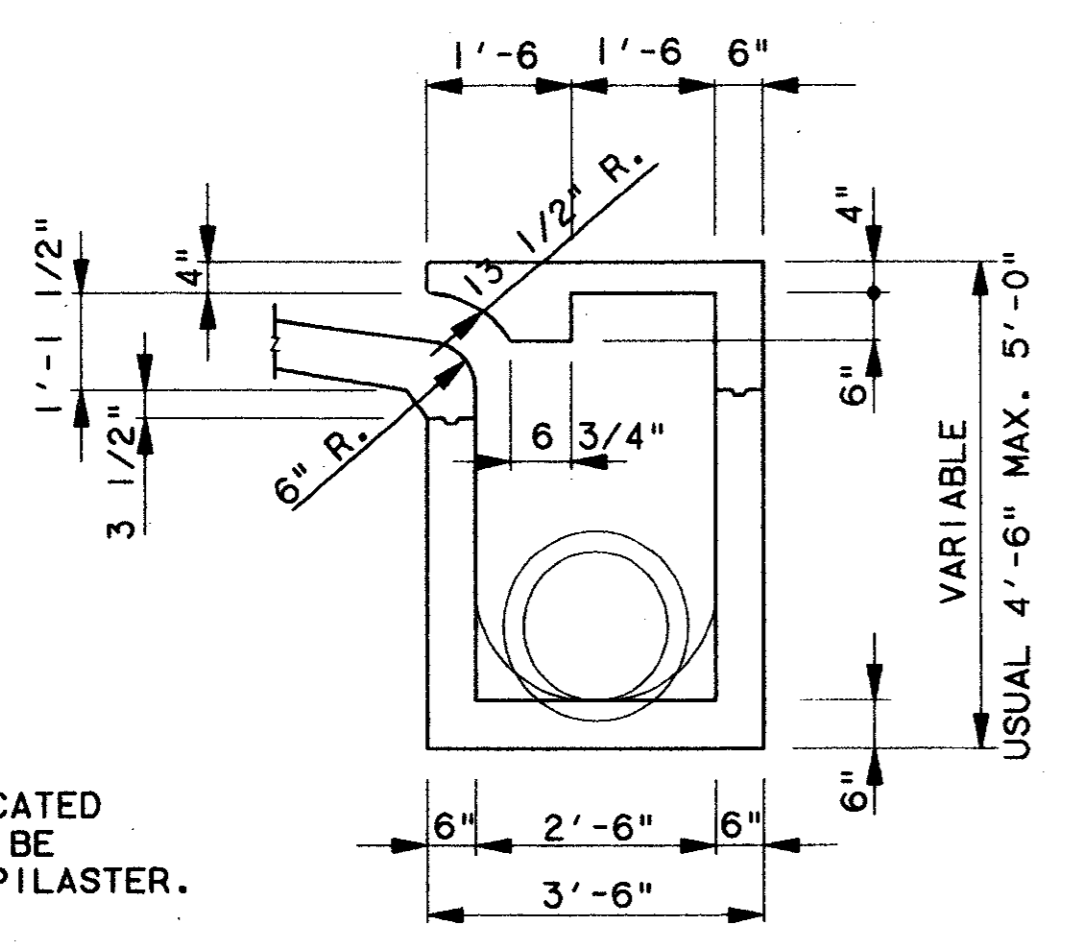


SECTION E-E N.T.S.



NOTES TO CONTRACTOR:
1. USE 3000 PSI CONCRETE.
2. ALL LAPS AND EXTENSIONS OF REINF. TO BE 30x DIAM. OF BAR.

STANDARD SURFACE INLET N.T.S.



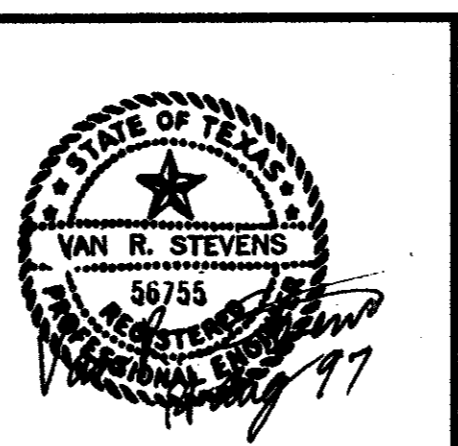
TYPICAL CROSS SECTION N.T.S.

NOTE:
INLET THROAT SHALL BE A 7 1/2" OPENING.

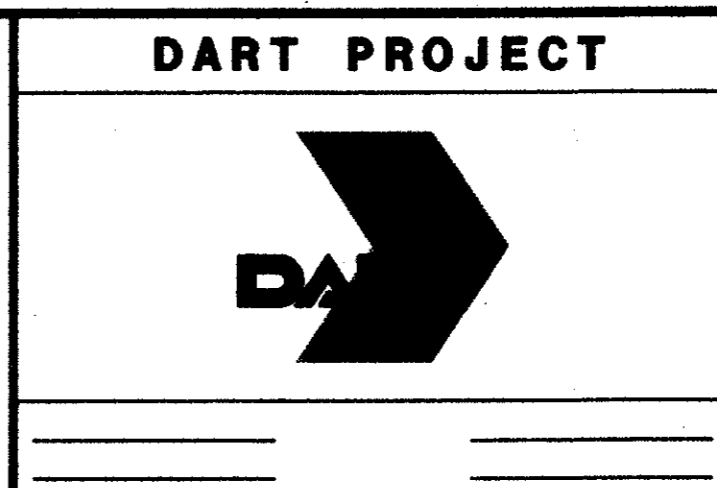
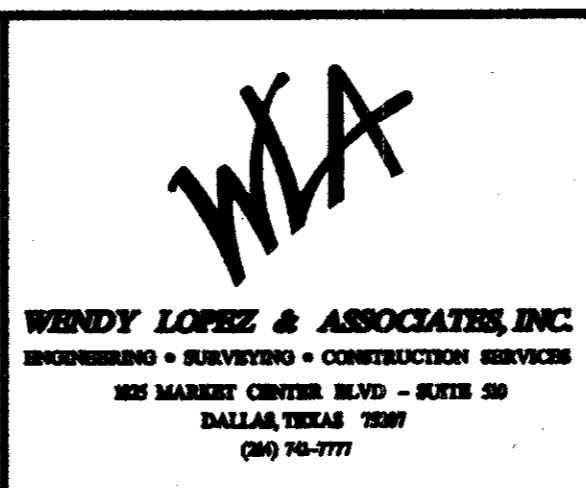
GENERAL NOTES:
1. OUTLET PIPE MAY BE LOCATED IN ANY WALL BUT SHALL NOT BE LOCATED AT ANY CORNER OR PILLASTER.
2. MANHOLE RING WITH LOCKING COVER SHALL BE PLACED OVER THE OUTLET PIPE, REINFORCING No. 3 BAR TO BE ADJUSTED ACCORDINGLY.

7-7-99

REV	DATE	DESCRIPTION	BY	ENG	CHK	APP	REV	DATE	DESCRIPTION	BY	ENG	CHK	APP



WENDY LOPEZ & ASSOC.
LOCKWOOD, ANDREWS & NEWNAM
THE SWA GROUP
GERARD & ASSOCIATES
ZAXON



SCALE	N.T.S.
DRAWN	D. KRUCIAK
DESIGNED	P. ZHAO
CHECKED	V. STEVENS
IN CHARGE	V. STEVENS
DATE	14 AUG. 1997

CONTRACT SHEET No. 19 OF 95

ADDISON TRANSIT CENTER
INLET DETAILS

CONTRACT C-97000136 DWG No. CC6-0001 REV 0