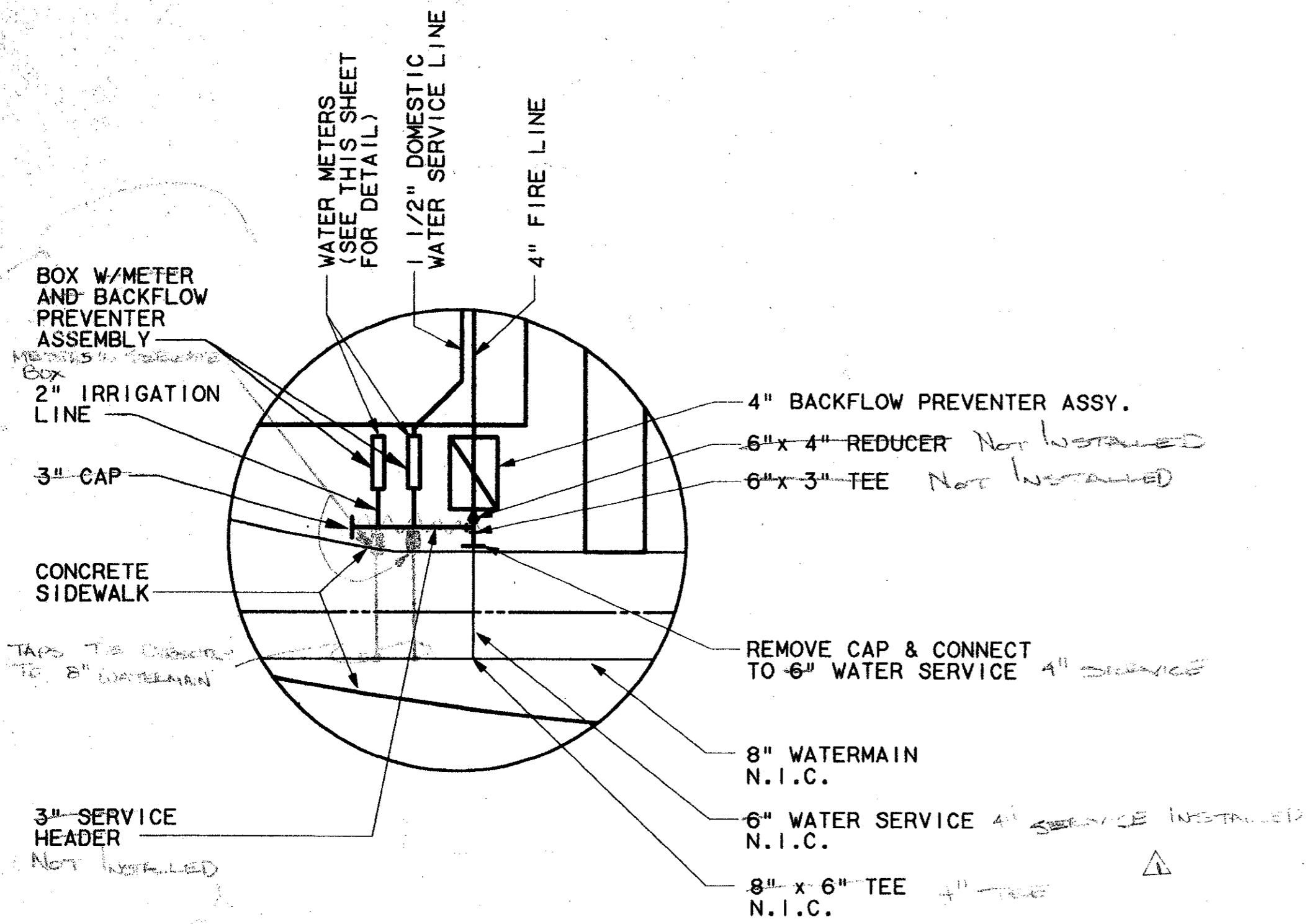
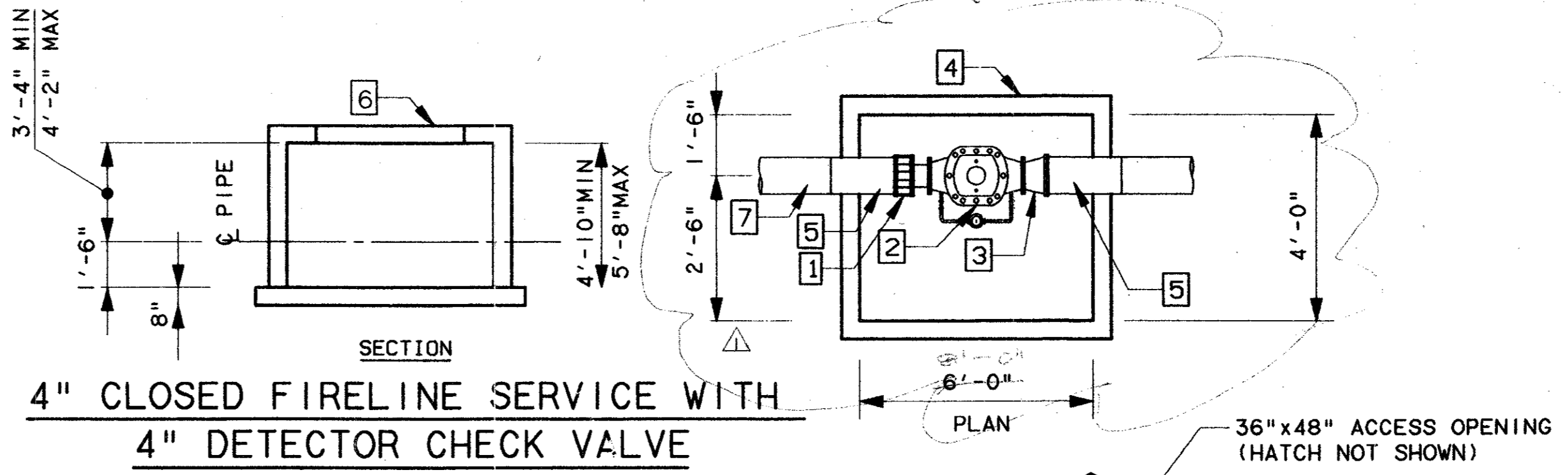


13 AUG 97
DART-TBL
JAMES LANDRY

1000-10N • ON 9MG

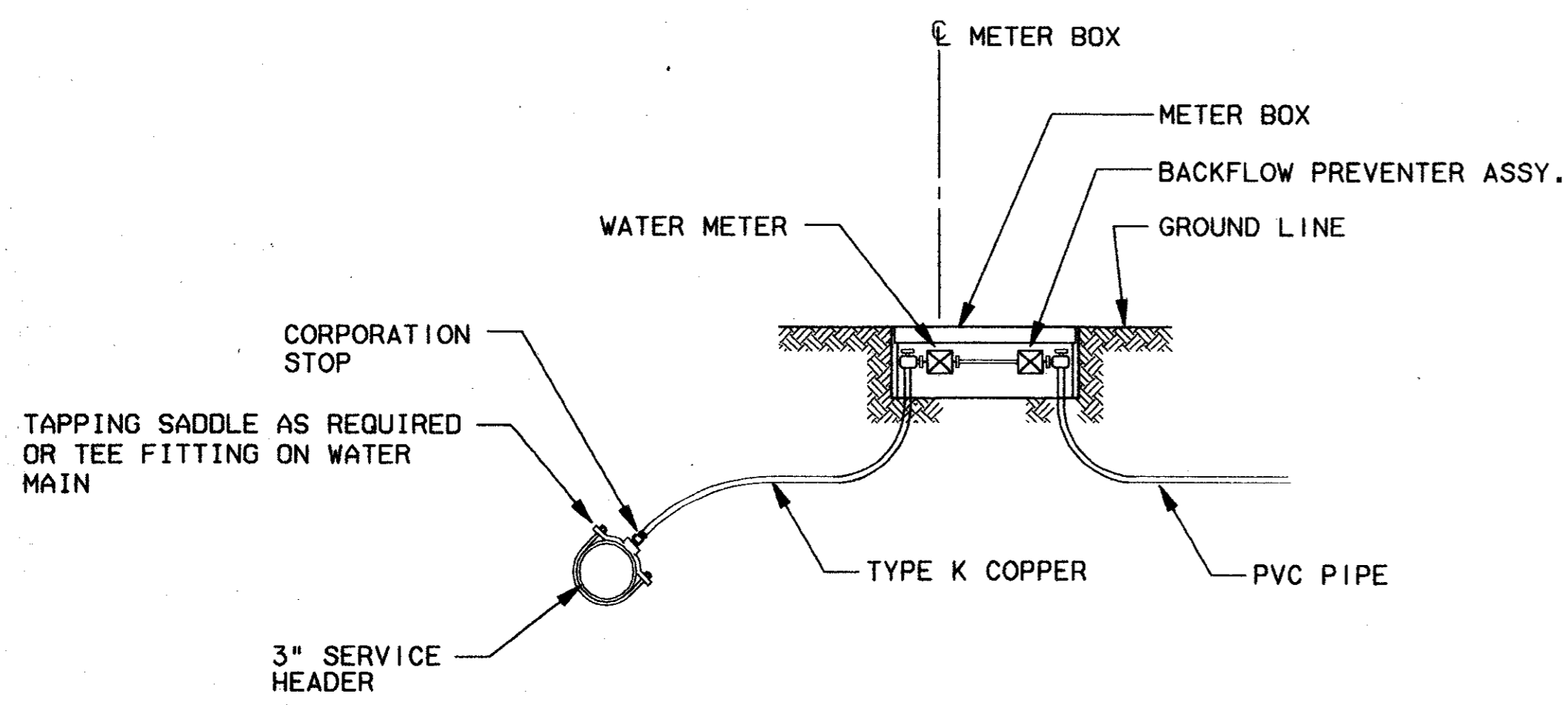


DETAIL 01
N.T.S. UC3-0002



- 1 4" FLNG. CPLG. ADAPTER
- 2 4" DETECTOR CHECK VALVE WITH BYPASS METER
- 3 4"x6" LONG C.I. NIPPLE M.U. FLANGE
- 4 PRECAST DETECTOR CHECK VAULT
- 5 4" CL. 51 DUCTILE IRON PIPE
- 6 ACCESS FRAME & COVER

DIAGRAMATIC PRECAST CONCRETE VAULT DETAIL
N.T.S.



WATER SERVICE DETAIL
N.T.S.

- NOTES:
- DOMESTIC USE:
ALL SERVICES WITH FLOW CAPABILITIES LESS THAN OR EQUAL TO 160 GPM SHALL EMPLOY A DISC OR TURBINE METER CONFORMING TO TOWN OF ADDISON SPECIFICATION # 6-95.1, # 6-95.2, OR # 6-95.3 OR 6-95.4.
 - LAWN IRRIGATION:
ALL IRRIGATION SERVICES GREATER THAN OR EQUAL TO 1.5" SHALL EMPLOY A TURBINE TYPE METER CONFORMING WITH TOWN OF ADDISON SPECIFICATION # 6-95.3.
 - FIRE SERVICE:
GREATER THAN 2" SHALL EMPLOY EITHER DOUBLE CHECK DETECTOR ASSEMBLY, TOWN OF ADDISON SPECIFICATION # 6-95.7, OR # 6-95.8. THESE ASSEMBLIES SHALL BE APPROVED BY THE USCFCCHR.
 - ALL INSTALLATIONS MUST COMPLY WITH TOWN OF ADDISON CODE OF ORDINANCE, SECTION 18-94, INSTALLATION OF CHECK VALVES.
 - METER AND VALVE BOXES MUST BE LARGE ENOUGH TO ACCOMMODATE FUTURE TESTING, REPAIRS, ETC. AND COMPLY WITH TOWN OF ADDISON CODE OF ORDINANCE.

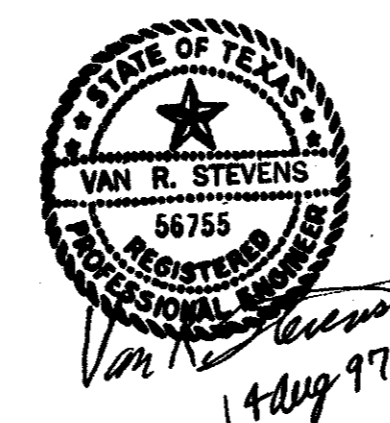
97000136
Tom Kader
RESIDENT

CONFORMED

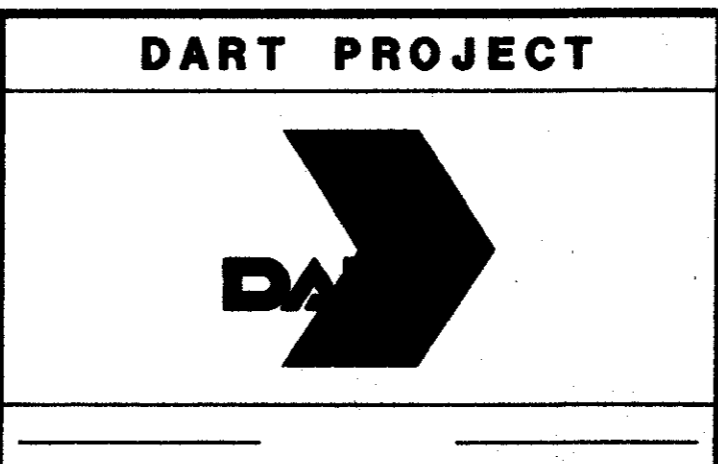
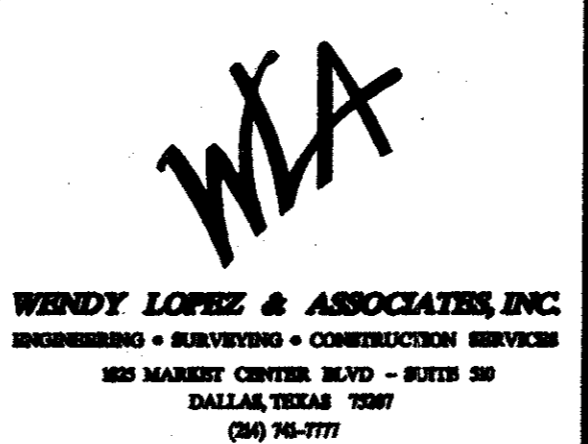
CONTRACT SHEET No. 35 OF 95

ADDISON
TRANSIT CENTER
UTILITY STANDARD
DETAILS

REV	DATE	DESCRIPTION	BY	ENG	CHK	APP	REV	DATE	DESCRIPTION	BY	ENG	CHK	APP
△	8/30/99	RECORD (AS BUILT) SUBMITTAL	RDM		JLM		△						
△							△						
△							△						
△							△						
△							△						



WENDY LOPEZ & ASSOC.
LOCKWOOD, ANDREWS & NEWMAN
THE SWA GROUP
GERARD & ASSOCIATES
ZAXON



SCALE	N.T.S.
DRAWN	D. KRUCIAK
DESIGNED	P. ZHAO
CHECKED	V. STEVENS
IN CHARGE	V. STEVENS
DATE	14 AUG. 1997

CONTRACT C-97000136
DWG No. UC1-0001
REV 01