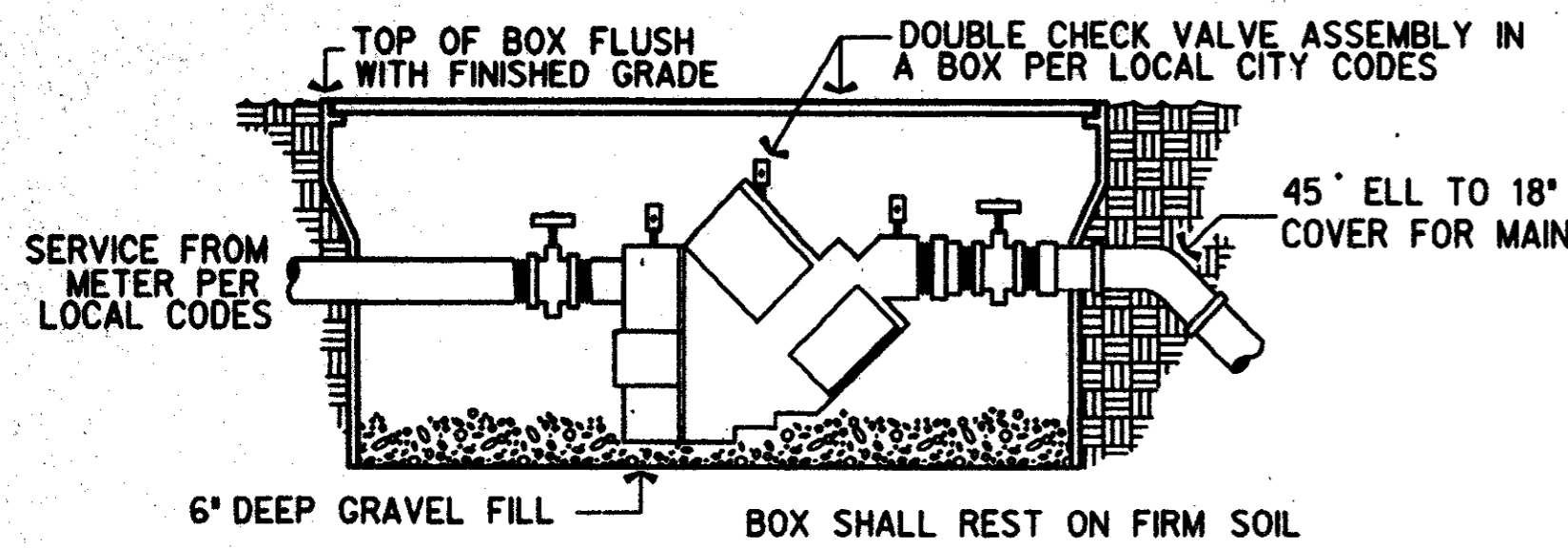
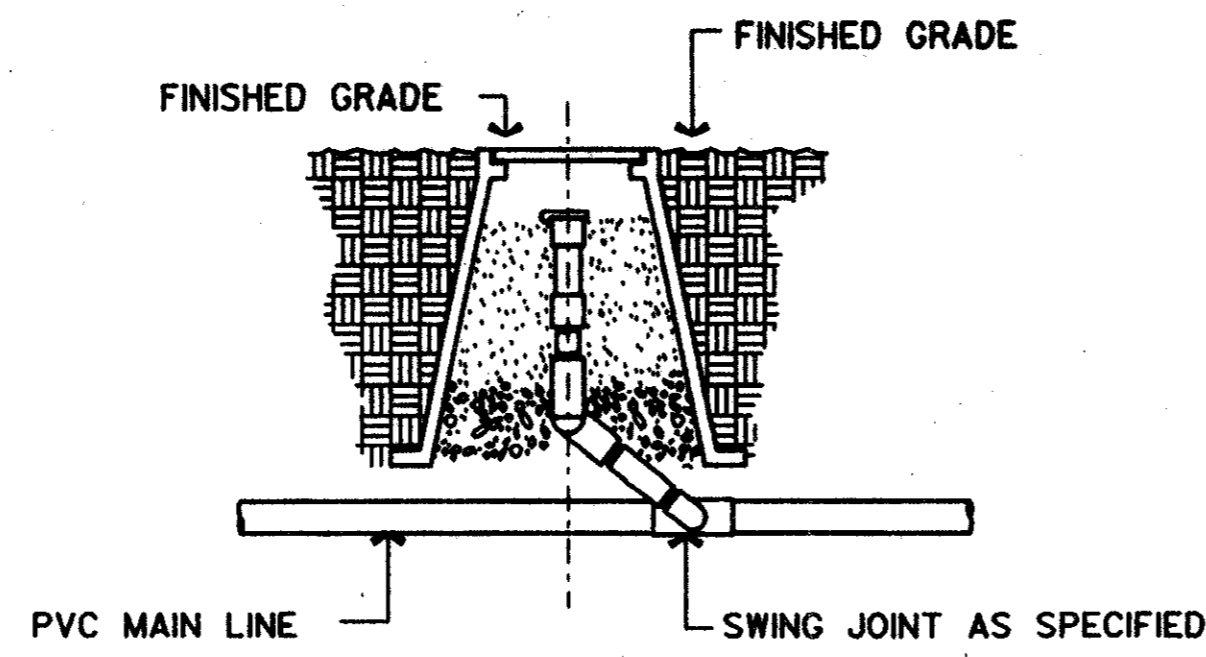


**IRRIGATION LEGEND**

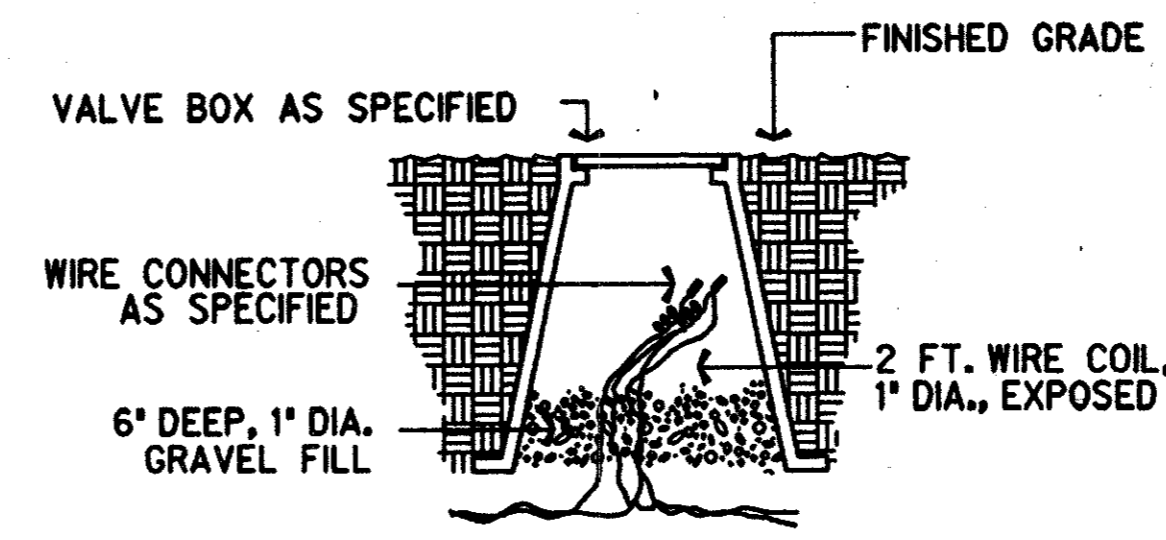
- ROTARY SPRINKLER HEAD (NOZZLE DESIGNATION)
- POP UP SPRAY HEAD
- QUICK COUPLER VALVE
- MAIN PIPES
- ELECTRONIC REMOTE CONTROL VALVE
- CONTROLLER - INSTALLATION IN TRANSIT CENTER BUILDING TO BE COORDINATED WITH ON SITE ELECTRICAL CONTRACTOR.
- ZONE DESIGNATION
- VALVE SIZE
- APPROX. GALLONS PER MINUTE



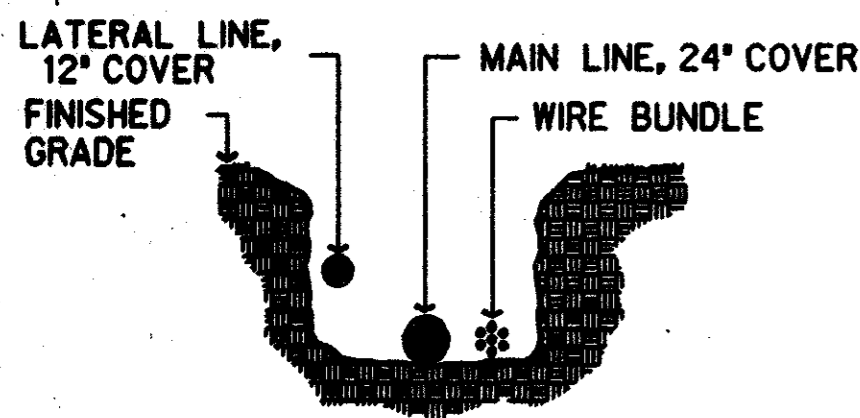
**TYPICAL DOUBLE CHECK VALVE ASSEMBLY**  
NOT TO SCALE



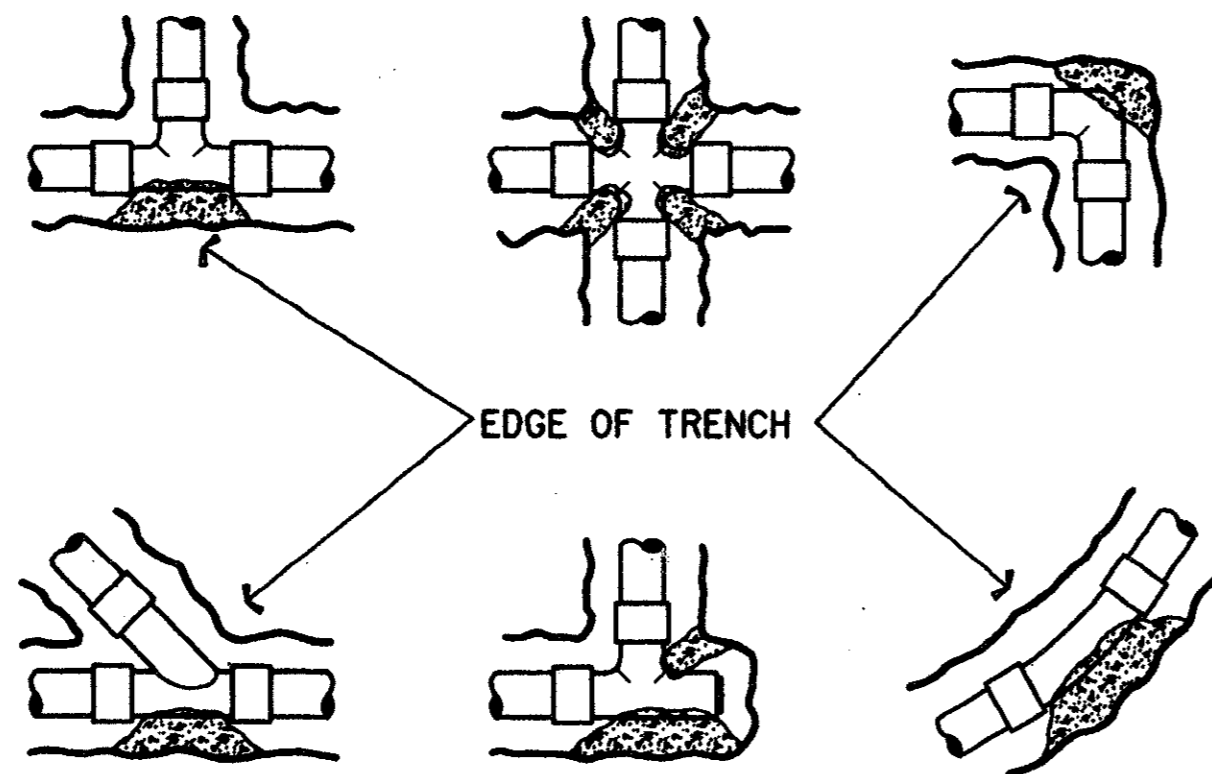
**TYPICAL QUICK COUPLING VALVE**  
NOT TO SCALE



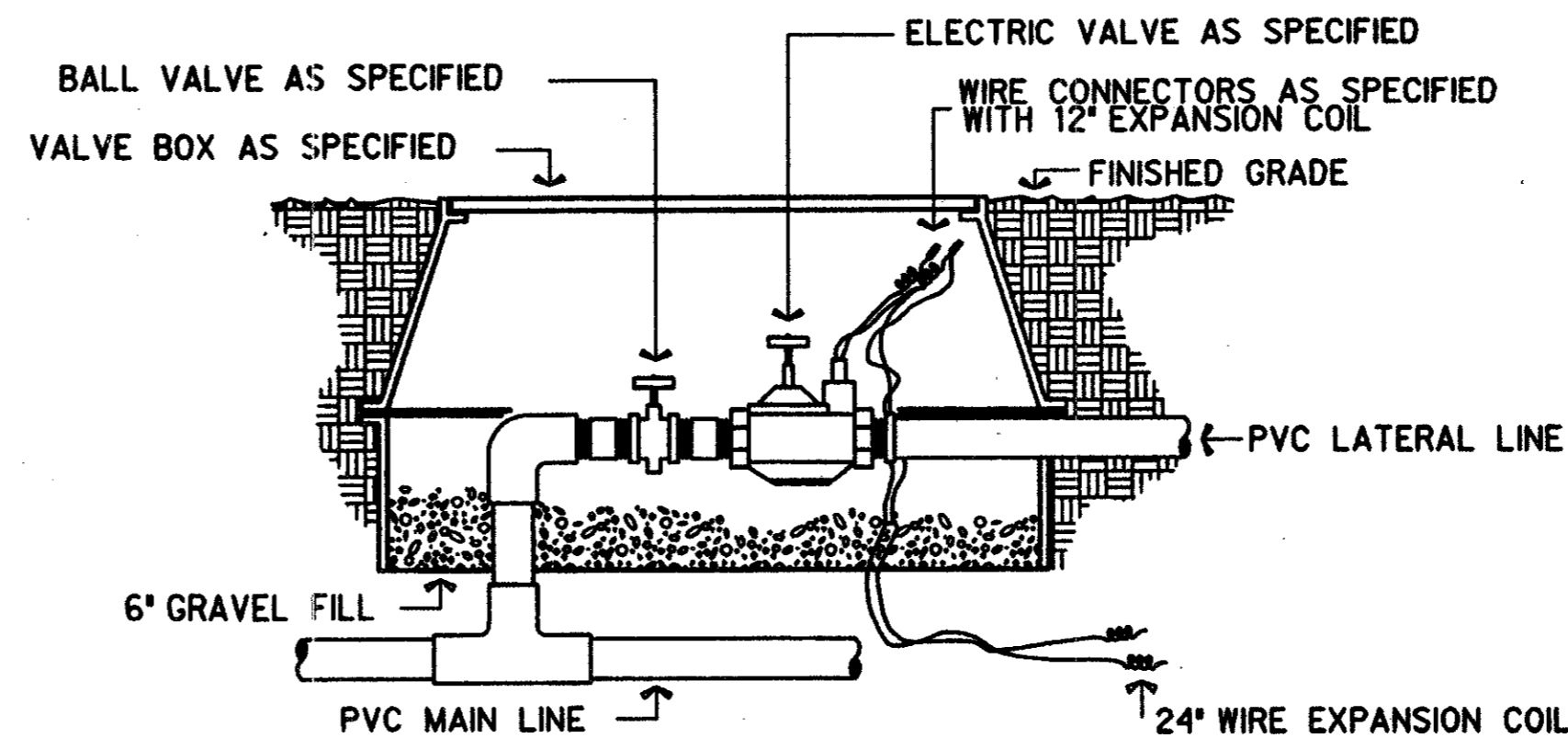
**TYPICAL WIRE SPLICE DETAIL**  
NOT TO SCALE



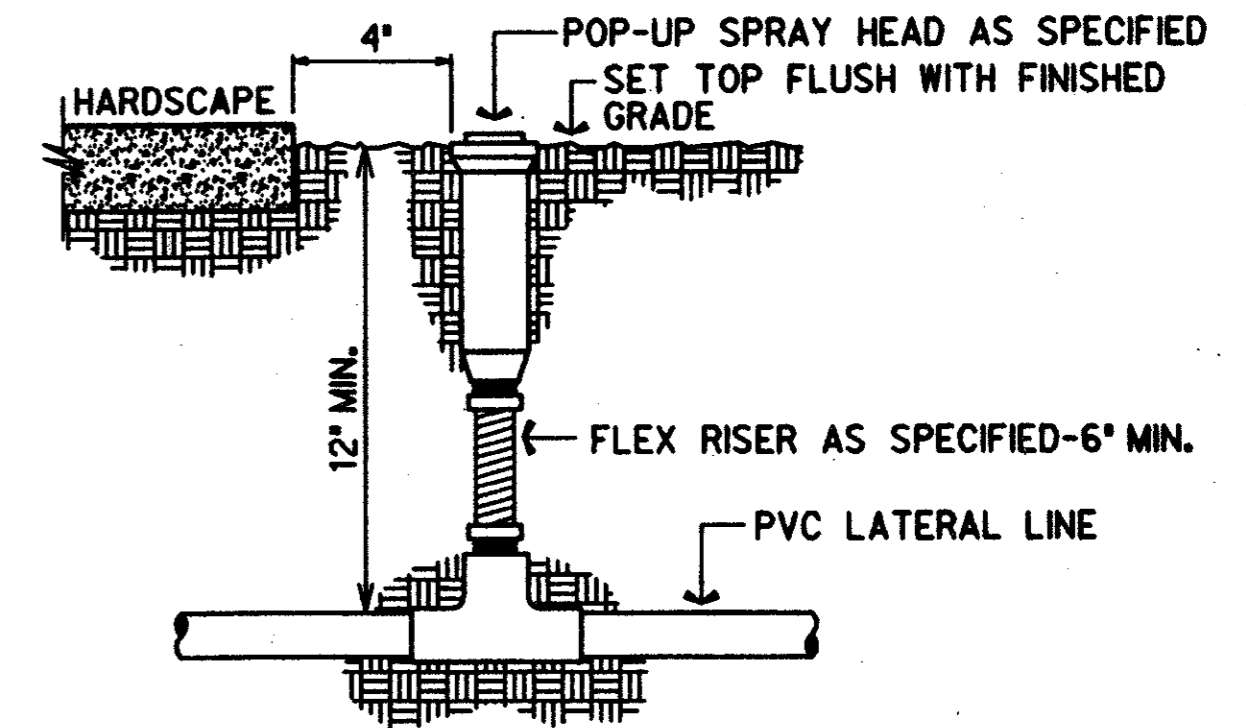
**TYPICAL TRENCH DETAIL**  
NOT TO SCALE



**TYPICAL THRUST BLOCK DETAIL**  
NOT TO SCALE



**TYPICAL ELECTRIC VALVE DETAIL**  
NOT TO SCALE

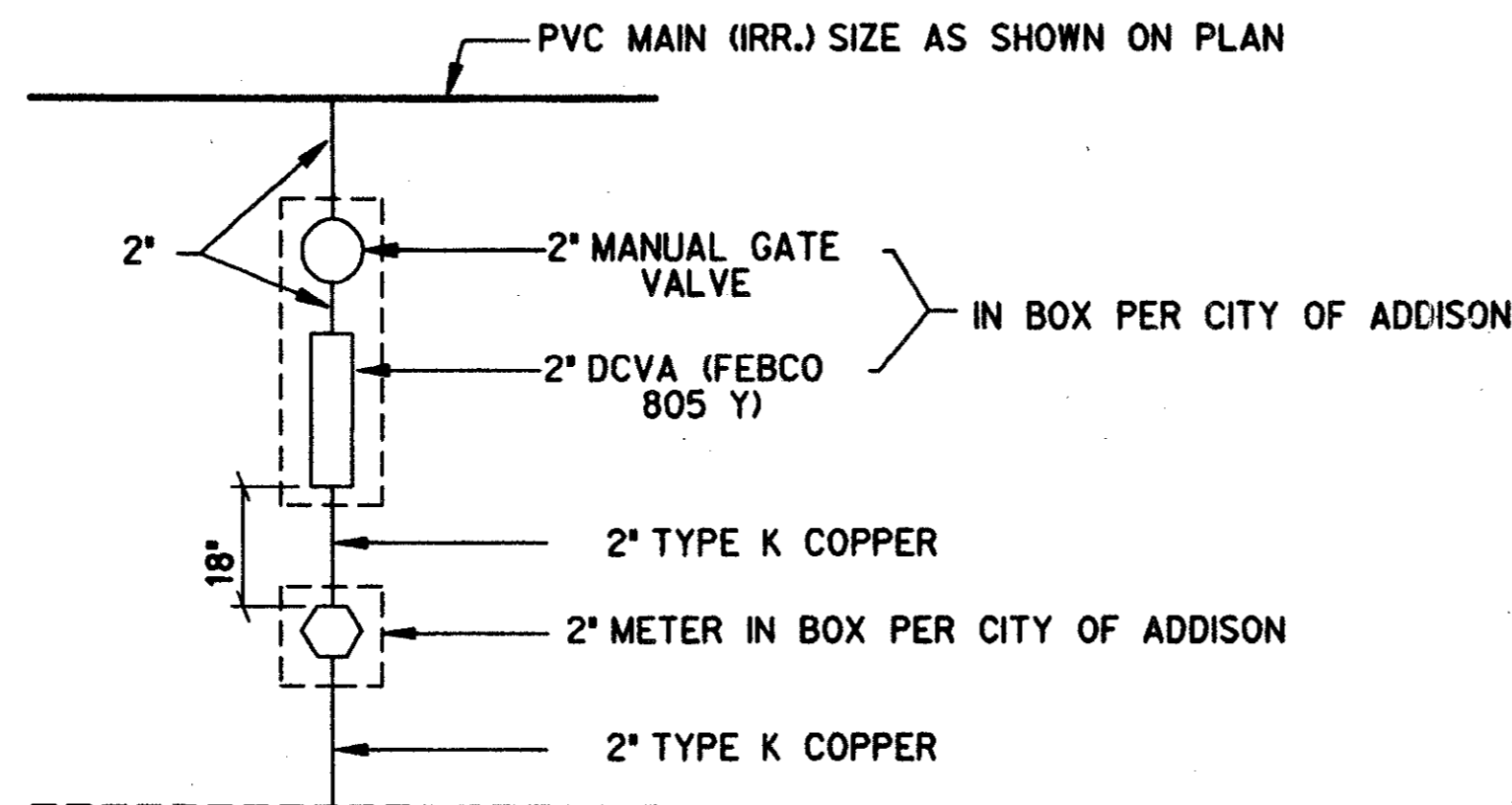


**TYPICAL POP-UP HEAD**  
NOT TO SCALE

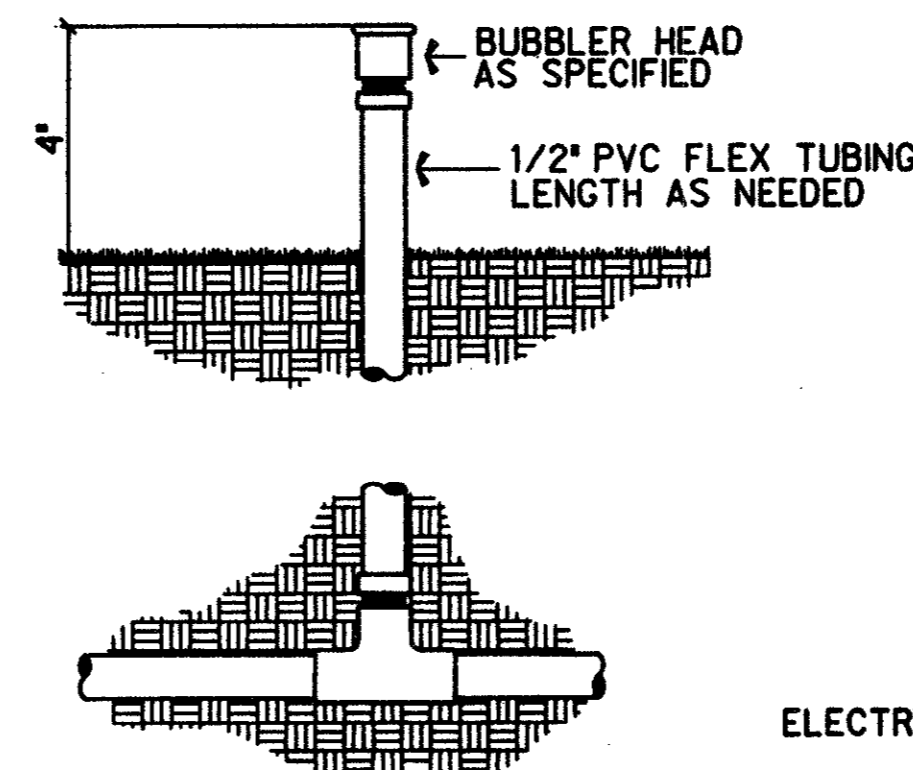
PVC PIPE SIZE	SOLVENT WELD SCH. 40 FITTING	BELL AND GASKET FITTING	SOCKETED PIPE
1/2"	2"	--	2"
3/4"	2"	--	2"
1"	2 1/2"	--	2 1/2"
1 1/4"	3"	--	3"
1 1/2"	3"	3"	3"
2"	4"	4"	4"
2 1/2"	6"	6"	4"
3"	6"	6"	6"
4"	6"	8"	6"

ELECTRICAL WIRING TO BE INSTALLED IN SEPARATE 2 1/2" PIPE SLEEVE SCHEDULE

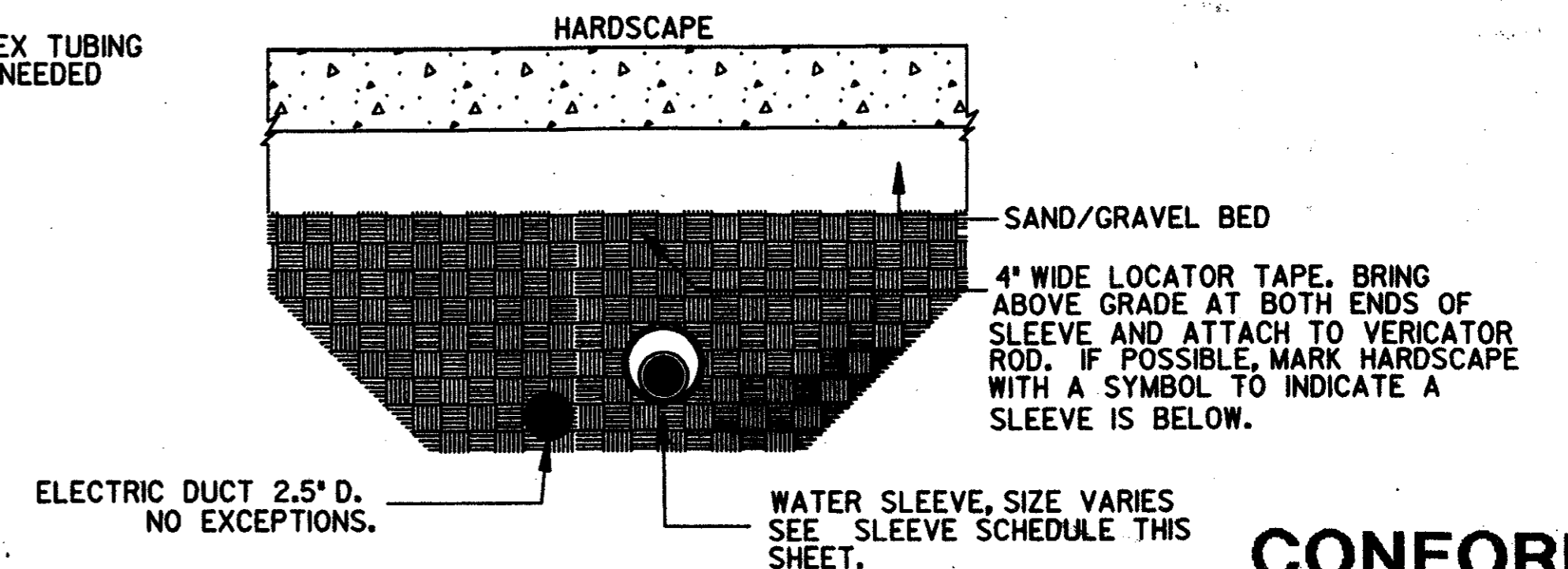
Professional Seal and Signature of **Tom Kader**, Licensed Irrigator, State of Texas, No. 22799. The seal is circular and contains the text 'Professional Seal of the State of Texas' and 'Irrigator License No. 22799'.



**IRRIGATION SERVICE CONNECTION**  
(TYPICAL SCHEMATIC)



**TYPICAL BUBBLER DETAIL**  
NOT TO SCALE



**IRRIGATION SLEEVE**  
(TYPICAL)

THE SEAL APPEARING ON THIS DOCUMENT WAS AUTHORIZED BY E. BRIAN BRISTOW, L.I. 4639 ON AUG. 13, 1997. ALTERATION OF A SEALED DOCUMENT WITHOUT PROPER NOTIFICATION TO THE RESPONSIBLE LICENSED IRRIGATOR IS AN OFFENSE UNDER THE TEXAS LICENSED IRRIGATORS ACT. THE RECORD COPY OF THIS DRAWING IS ON FILE AT THE OFFICES OF HALFF ASSOCIATES, INC., 8616 NORTHWEST PLAZA DRIVE, DALLAS TEXAS 75225

**CONFORMED**

**HALFF ASSOCIATES, INC.**  
IRRIGATION CONSULTANTS  
CONTRACT SHEET No. 51 OF 95

REV	DATE	DESCRIPTION	BY	ENG	CHK	APP	REV	DATE	DESCRIPTION	BY	ENG	CHK	APP



**SWA Group**  
2211 North Lamar  
Dallas, Texas, 75202  
214-954-0016  
Landscape Architecture  
Site Planning  
Urban Design

**WLA**  
**WENDY LOPEZ & ASSOCIATES, INC.**  
ENGINEERING • SURVEYING • CONSTRUCTION SERVICES  
305 MARKET CENTER BLVD - SUITE 510  
DALLAS, TEXAS 75207  
(214) 746-7777

**DART PROJECT**  
**DART**

SCALE	AS NOTED
DRAWN	L. HUGHES
DESIGNED	E. B. BRISTOW
CHECKED	E. B. BRISTOW
IN CHARGE	V. STEVENS
DATE	14 AUGUST 97

**ADDISON TRANSIT CENTER IRRIGATION DETAILS**  
CONTRACT C-97000136  
DWG No. LC2-0005  
REV 0