

e:\94010.212\shf\abcrw02.050  
13-AUG-97  
DART.TBL  
JAMES LANDRY

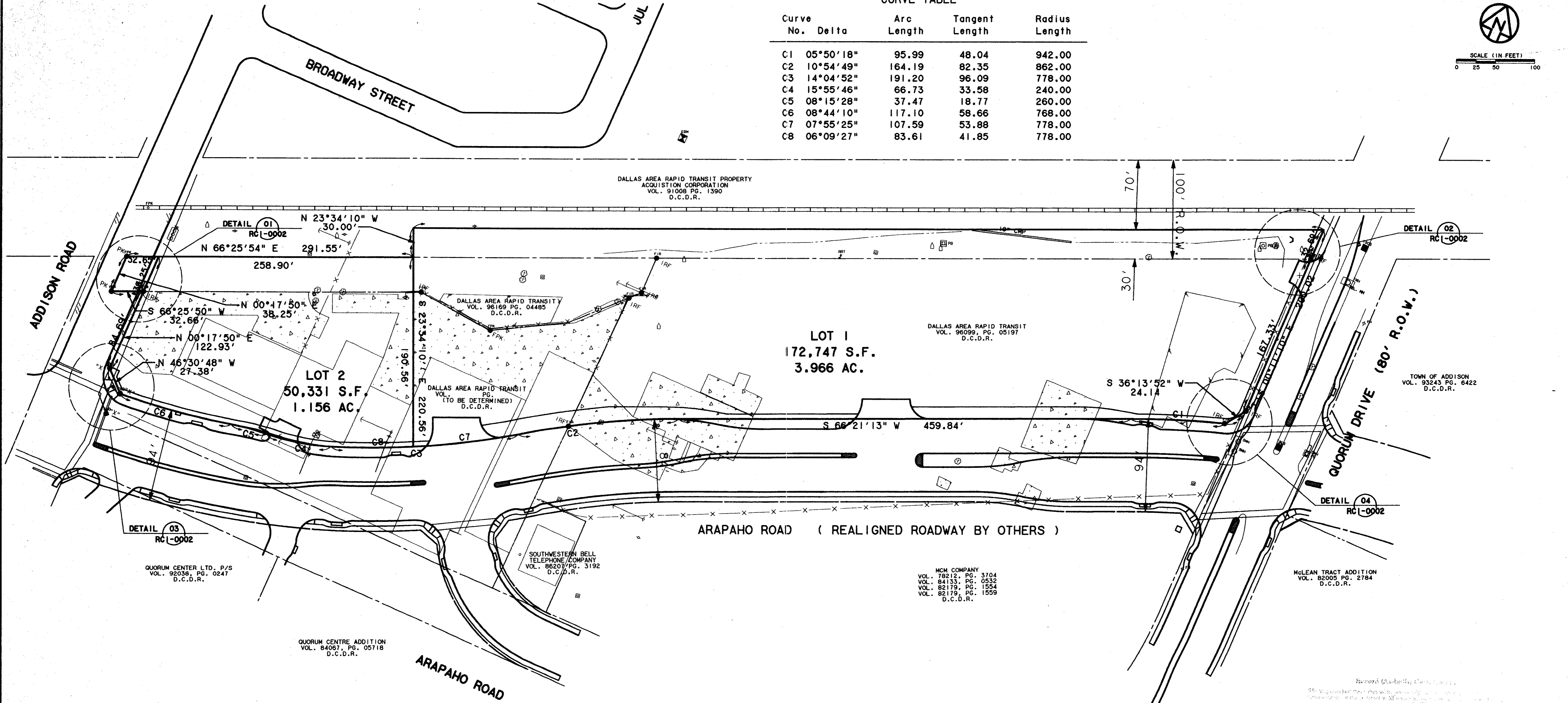
DWG No. RC1-0001

CURVE TABLE

Curve No.	Delta	Arc Length	Tangent Length	Radius Length
C1	05°50'18"	95.99	48.04	942.00
C2	10°54'49"	164.19	82.35	862.00
C3	14°04'52"	191.20	96.09	778.00
C4	15°55'46"	66.73	33.58	240.00
C5	08°15'28"	37.47	18.77	260.00
C6	08°44'10"	117.10	58.66	768.00
C7	07°55'25"	107.59	53.88	778.00
C8	06°09'27"	83.61	41.85	778.00



SCALE (1 IN FEET)  
0 25 50 100



DALLAS AREA RAPID TRANSIT PROPERTY ACQUISITION CORPORATION VOL. 91008 PG. 1390 D.C.D.R.

DALLAS AREA RAPID TRANSIT VOL. 96999, PG. 05197 D.C.D.R.

TOWN OF ADDISON VOL. 93243 PG. 6422 D.C.D.R.

ARAPAHO ROAD (REALIGNED ROADWAY BY OTHERS)

QUORUM CENTER LTD. P/S VOL. 92038, PG. 0247 D.C.D.R.

SOUTHWESTERN BELL TELEPHONE COMPANY VOL. 86207 PG. 3192 D.C.D.R.

MCM COMPANY VOL. 78212, PG. 3704 VOL. 84133, PG. 0532 VOL. 82179, PG. 1554 VOL. 82179, PG. 1559 D.C.D.R.

MCLEAN TRACT ADDITION VOL. 82005 PG. 2784 D.C.D.R.

QUORUM CENTRE ADDITION VOL. 84067, PG. 05718 D.C.D.R.

General Description of Contents  
This document contains the boundary and topographic information for the project. It is intended for use in the design and construction of the project. The information is based on the survey data and other information provided to the engineer. The engineer is not responsible for the accuracy of the information provided to him.

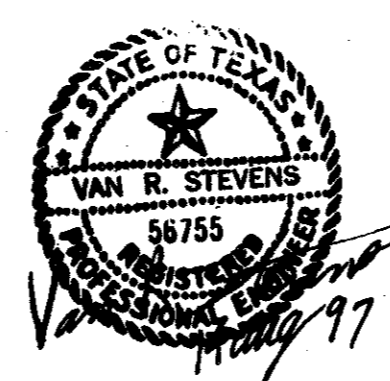
*Tom Kadek*  
PRESIDENT

*Wendy Lopez*  
7-7-99

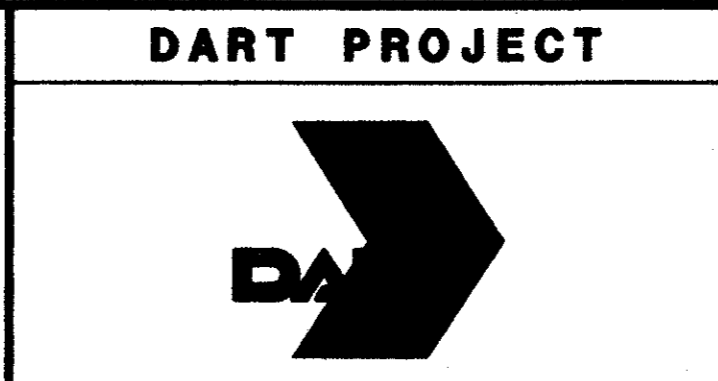
CONFORMED

CONTRACT SHEET No. 7 OF 95

REV	DATE	DESCRIPTION	BY	ENG	CHK	APP	REV	DATE	DESCRIPTION	BY	ENG	CHK	APP
△							△						
△							△						
△							△						
△							△						
△							△						
△							△						



WENDY LOPEZ & ASSOC.  
LOCKWOOD, ANDREWS & NEWMAN  
THE SWA GROUP  
GERARD & ASSOCIATES  
ZAXON



SCALE 1"=50'  
DRAWN D. KRUCIAK  
DESIGNED P. ZHAO  
CHECKED V. STEVENS  
IN CHARGE V. STEVENS  
DATE 14. AUG. 1997

ADDISON TRANSIT CENTER BOUNDARY TOPOGRAPHIC PLAN

CONTRACT C-97000136 DWG No. RC1-0001 REV 0