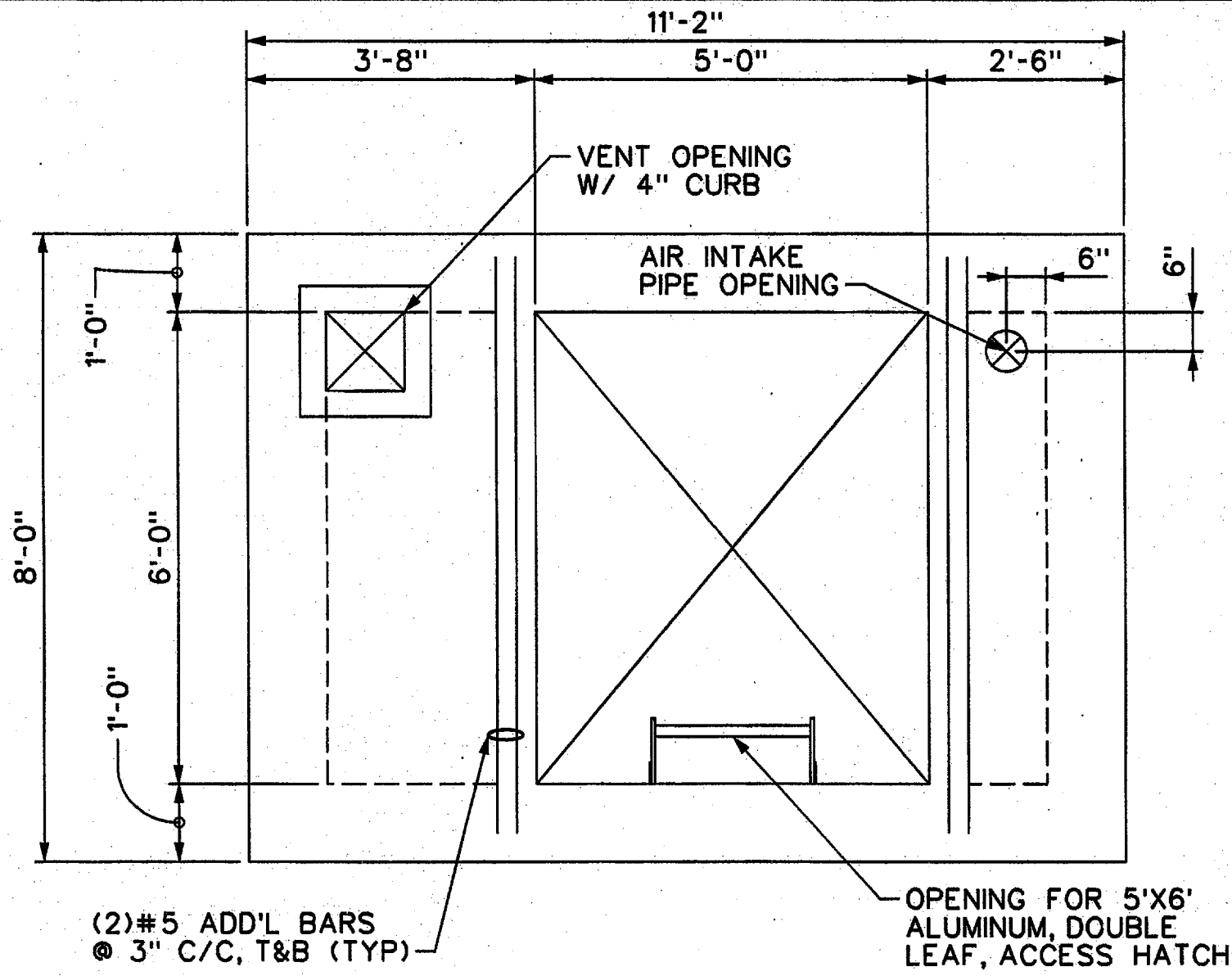


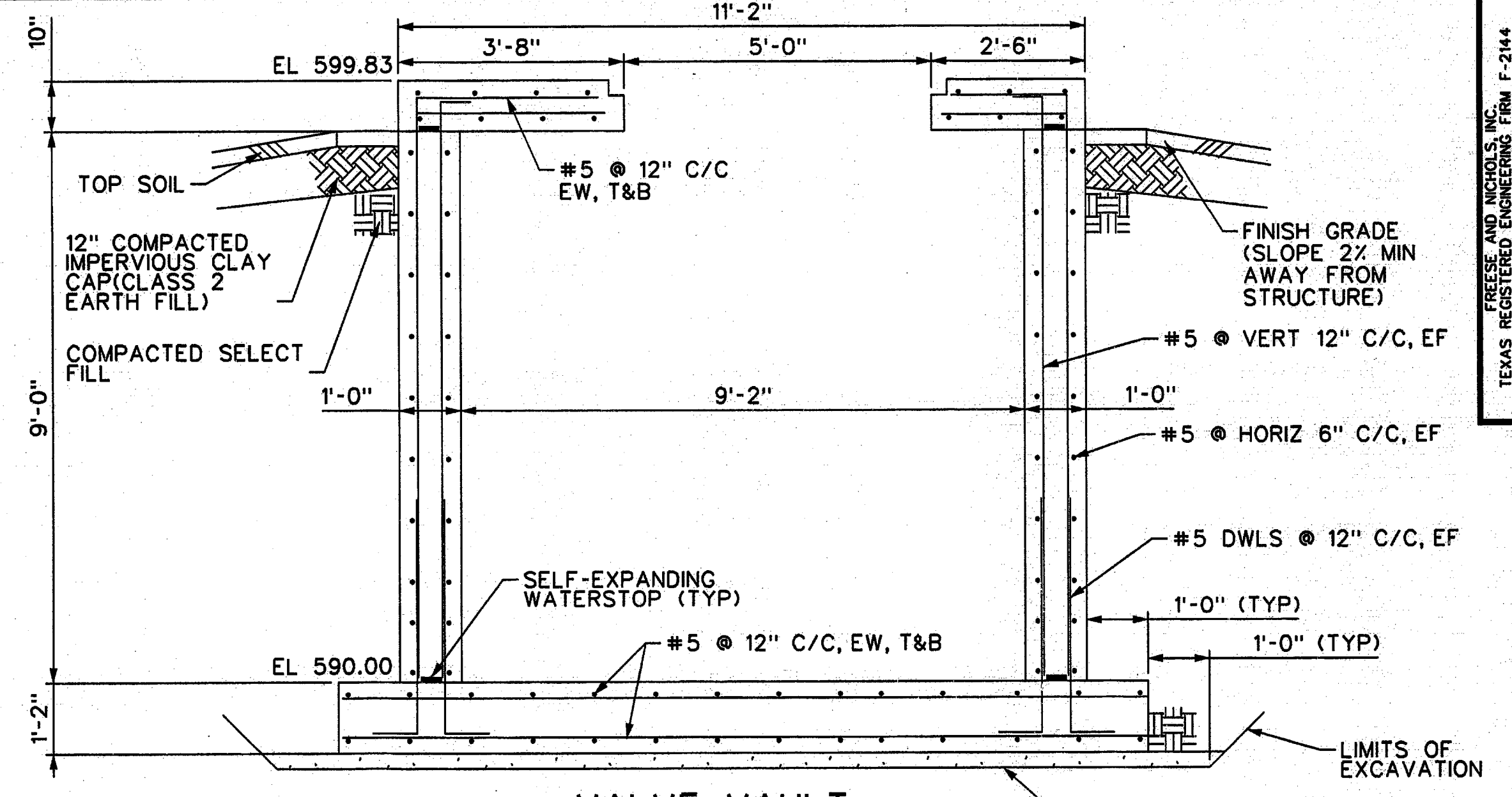
**VALVE VAULT SECTIONAL PLAN**

1  
1/2" = 1'-0"



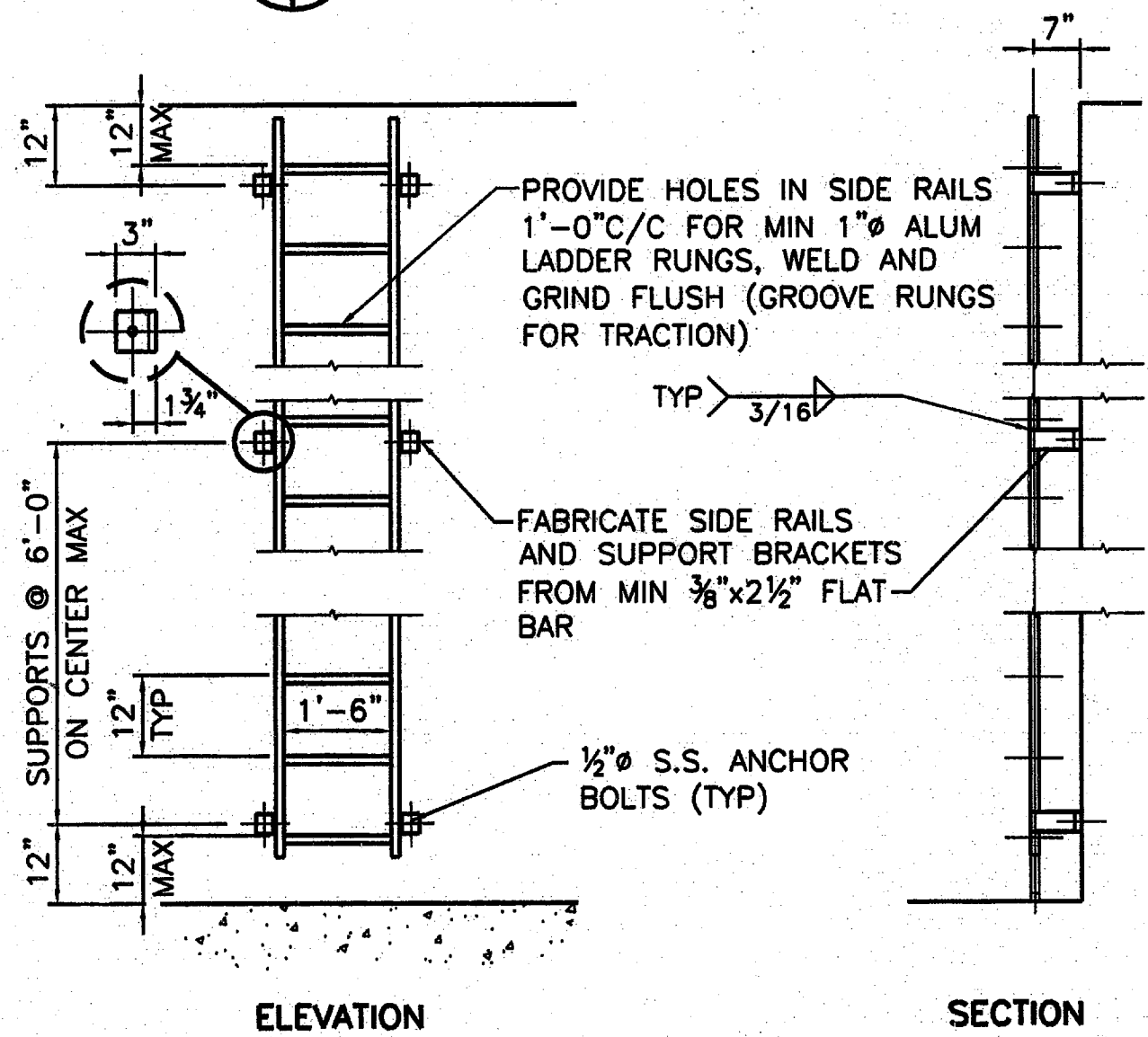
**VALVE VAULT TOP PLAN**

2  
1/2" = 1'-0"



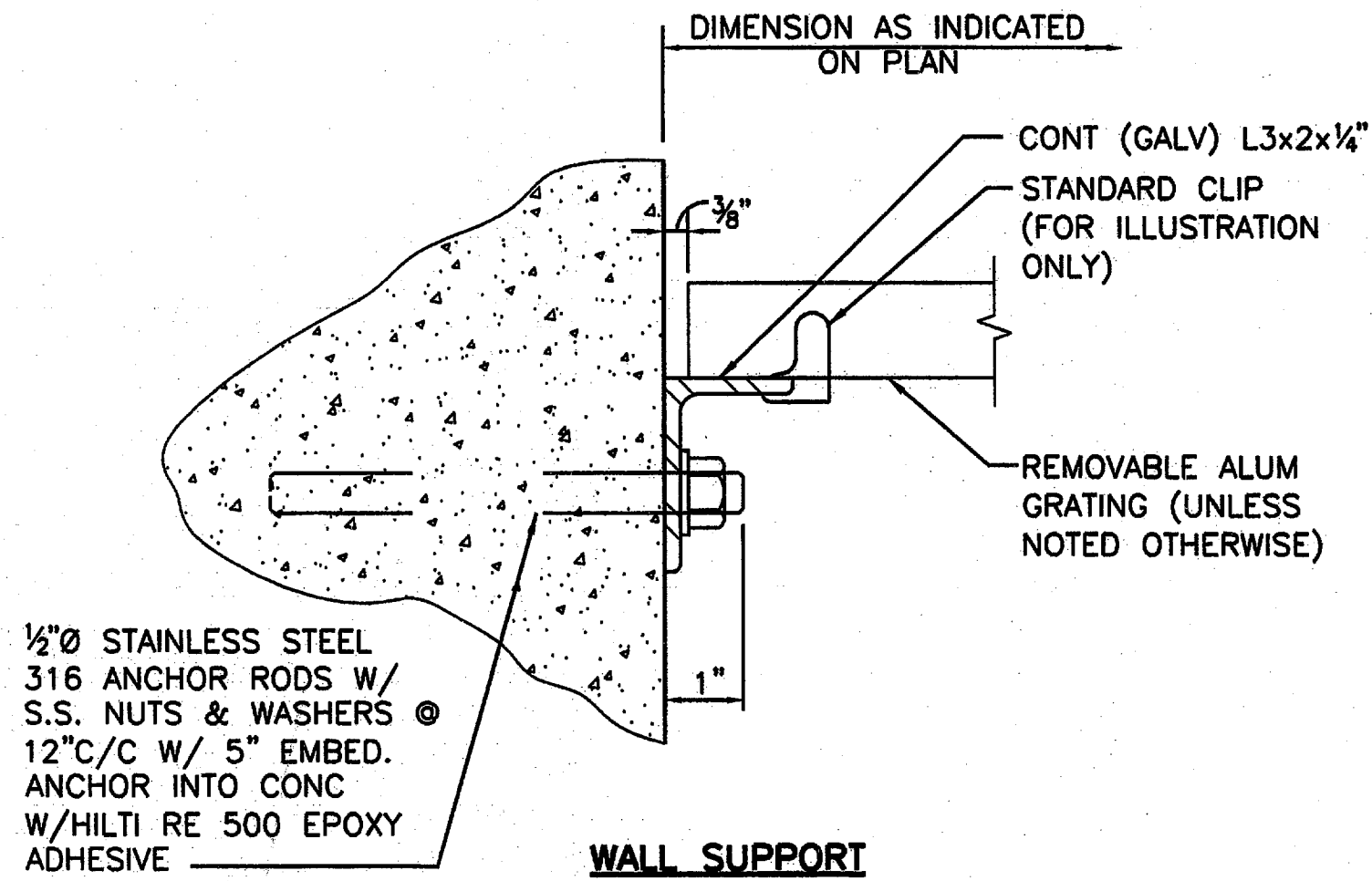
**VALVE VAULT SECTION**

3  
1/2" = 1'-0"



**ALUMINUM LADDER**

4  
NOT TO SCALE

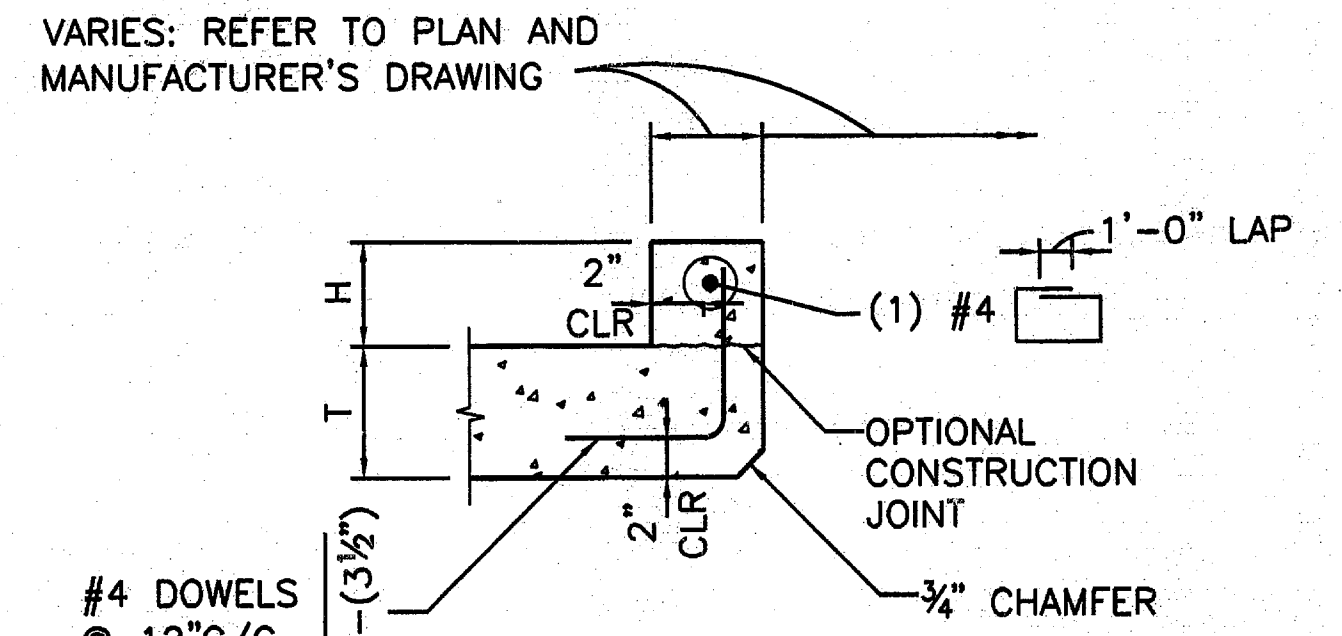


**WALL SUPPORT**

**EMBEDMENT SUPPORT**

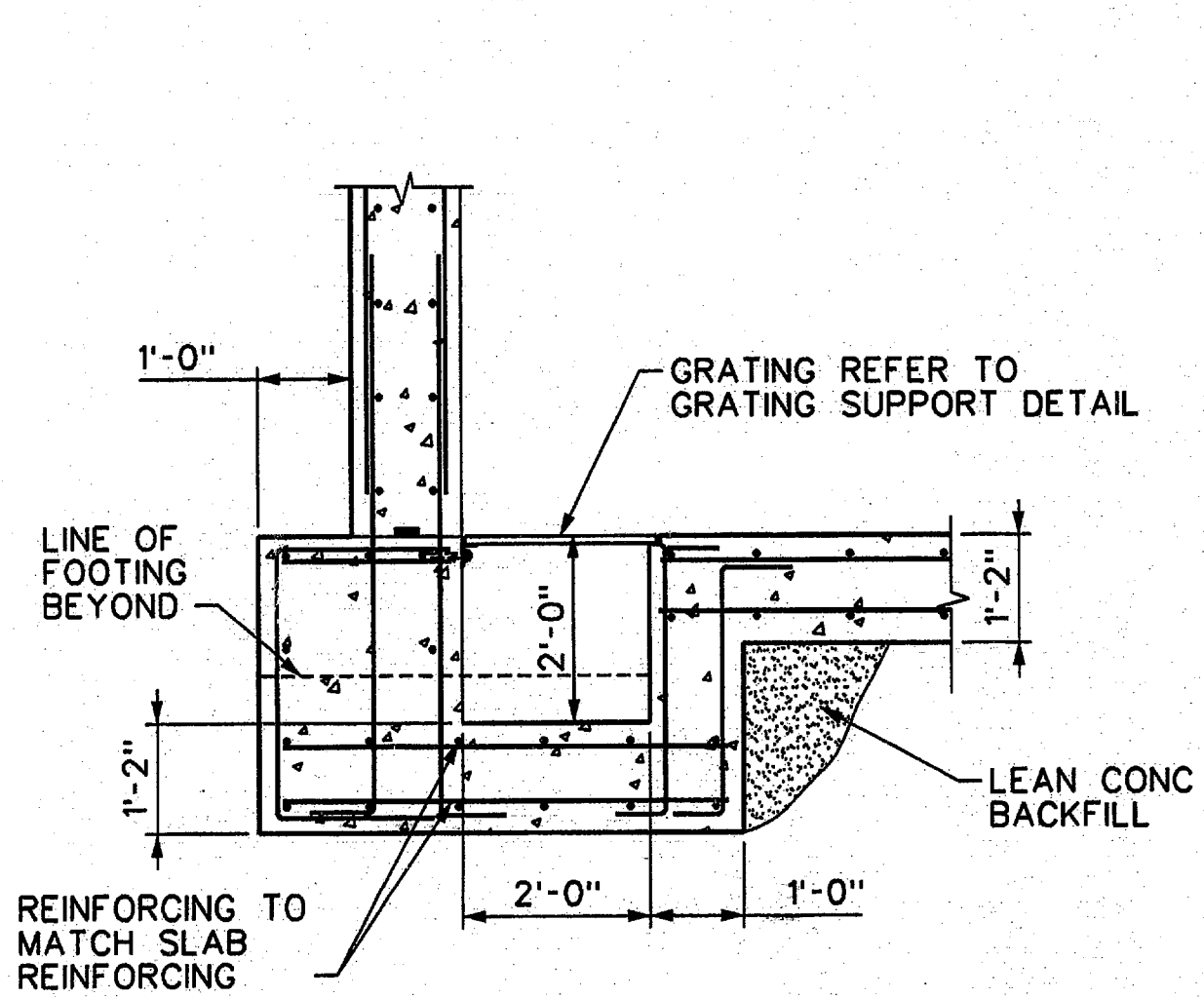
**ALUMINUM GRATING SUPPORT DETAIL**

5  
NOT TO SCALE



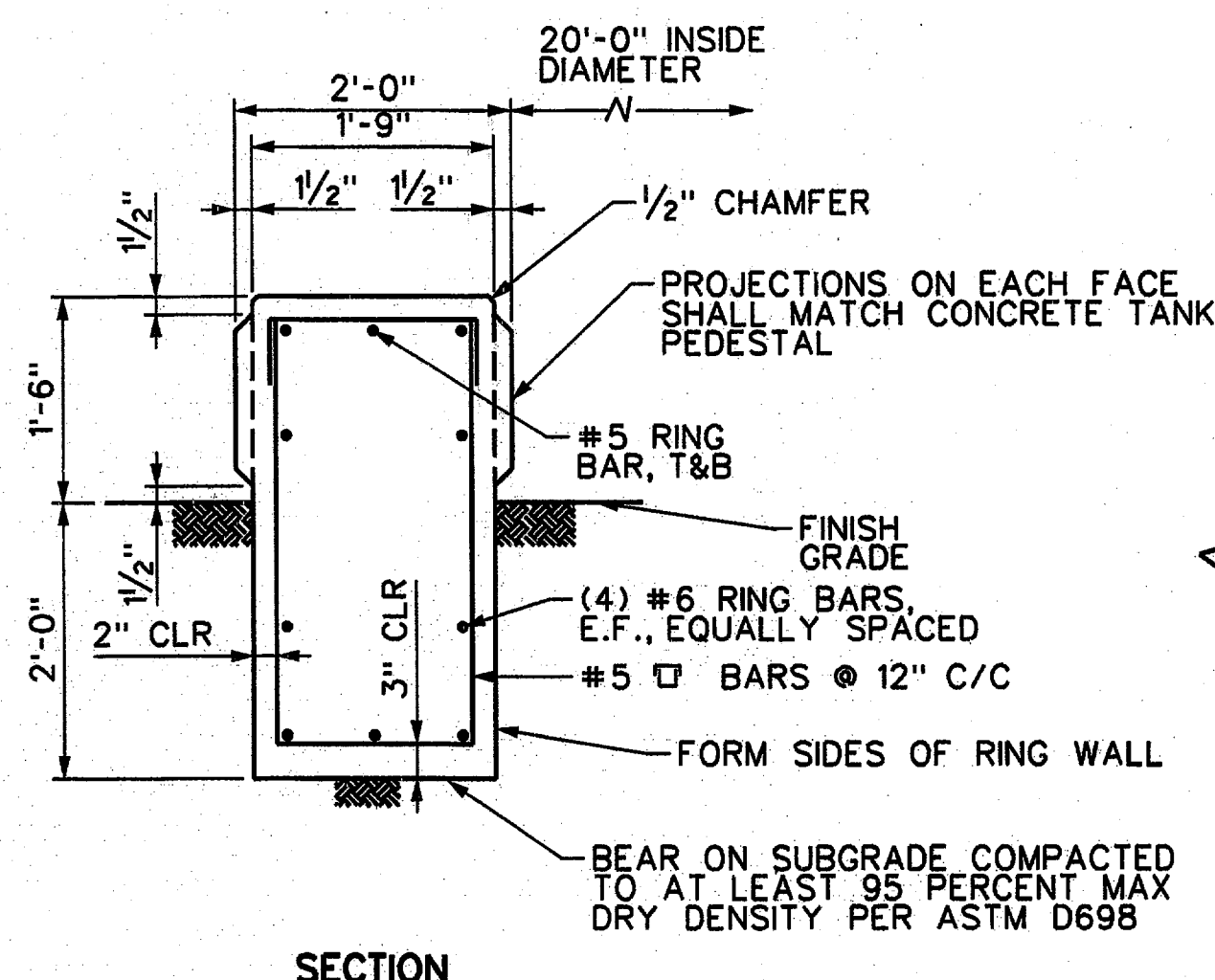
**CURB AT VENT OPENING**

6  
NOT TO SCALE



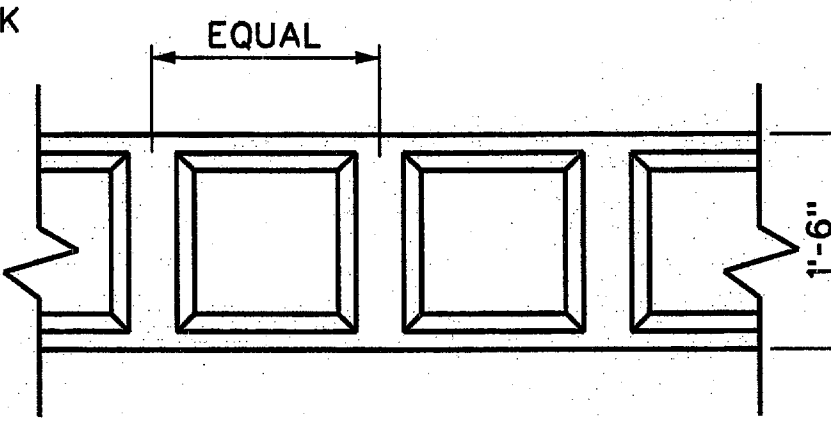
**SUMP PIT SECTION**

7  
1/2" = 1'-0"



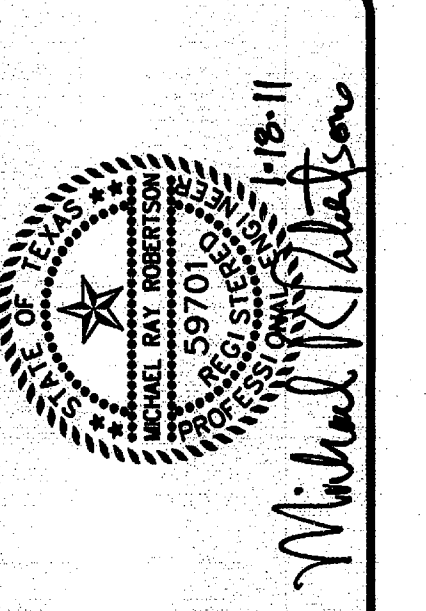
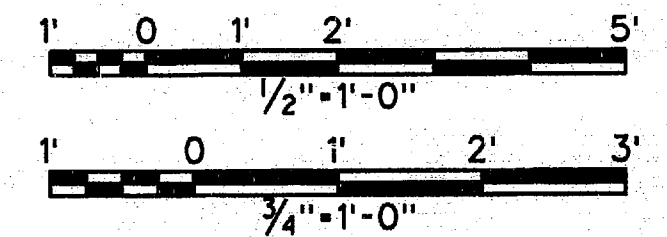
**LANDSCAPE WALL**

8  
3/4" = 1'-0"



**ELEVATION**

**DETAIL NOTE:**  
COORDINATE CURB SIZE & ANCHOR BOLTS WITH MECHANICAL AND EQUIPMENT MANUFACTURER.



**FREESIE & NICHOLS**  
2220 San Jacinto Blvd., Suite 330  
Denton, TX 76205  
Phone: (817) 382-4600  
Fax: (817) 382-4677  
Web: www.freesie.com

TOWN OF ADDISON, TEXAS  
**SURVEYOR 1.5 MG EST**  
CIVIL  
STRUCTURAL DETAILS

NO.	ISSUES	DATE	FIRM JOB NO.		DESIGNED	MRR	DRAWN	RJS	REVISIONS	CHECKED	RGK	FILE NAME
			ADD08459	01/21/11								
01												ST-EST-DI-TYP10.SHT
VERIFY SCALE Bar is one inch on original drawing. If not one inch on this sheet, adjust scale.												
SHEET												ST-01
SEQ.												

MicroStation V8 User: KAC Office: Fort Worth  
 Plotter: J. Plotter, J. Plotter, J. Plotter, J. Plotter  
 Plot: C:\Users\KAC\Desktop\Project\Drawings\1-18-11\ST-EST-DI-TYP10.SHT  
 Date: 10/18/2011 10:53:37 AM  
 Project: Freese and Nichols, Inc.

ST-EST-DI-TYP10.SHT

ST-EST-DI-TYP10.SHT

ST-EST-DI-TYP10.SHT

ST-EST-DI-TYP10.SHT

ST-EST-DI-TYP10.SHT

ST-EST-DI-TYP10.SHT

ST-EST-DI-TYP10.SHT