

PLANS FOR THE CONSTRUCTION OF  
PAVING, STORMWATER, WATER, WASTEWATER,  
SIGNALIZATION AND STREETScape IMPROVEMENTS FOR

# ARAPAHO ROAD

FROM ADDISON ROAD TO DALLAS NORTH TOLLWAY



T O W N O F  
**ADDISON**

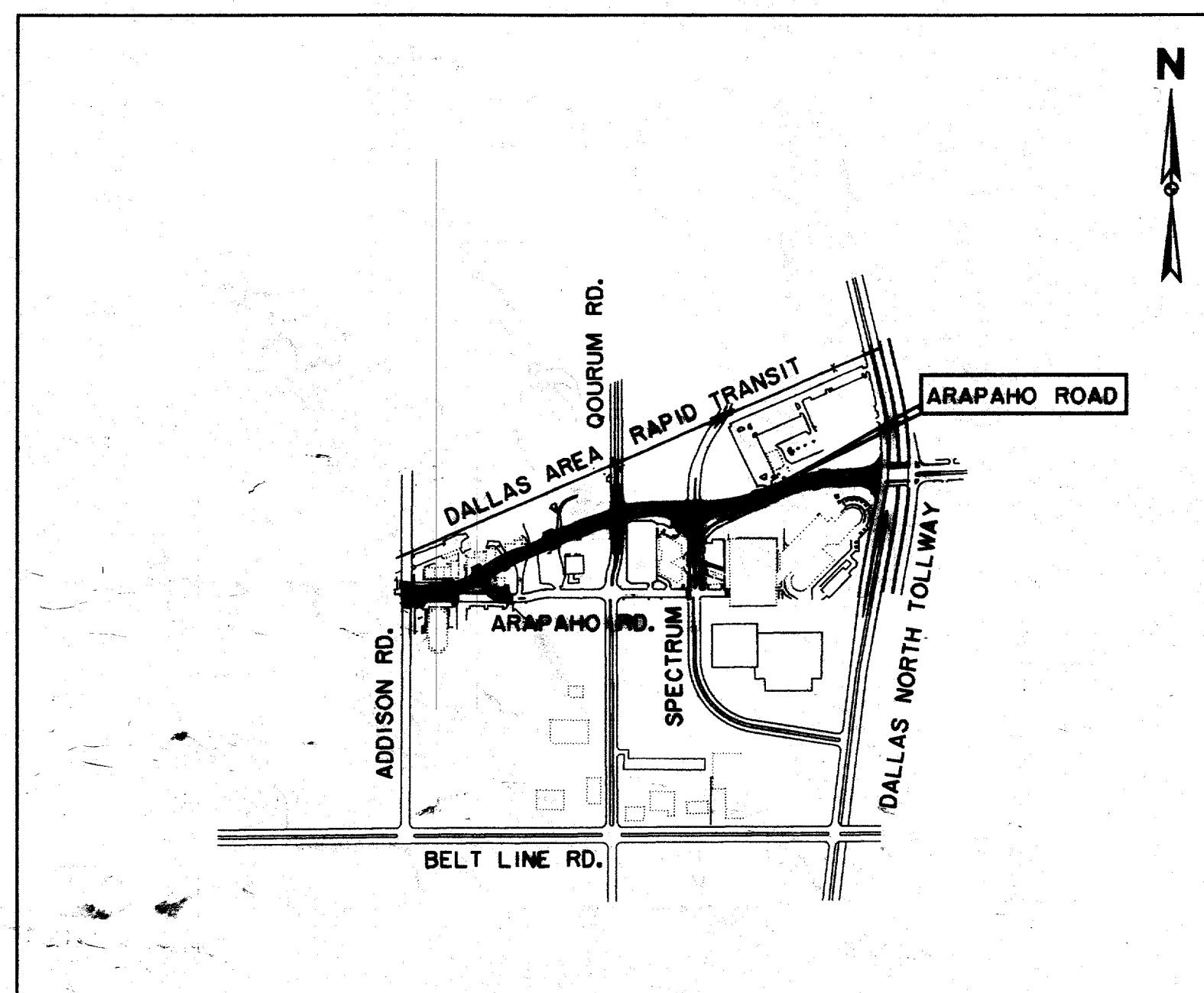
**RIGHT-OF-WAY**

4 PAGES

RECORD DOCUMENTS 6/9/2000

THESE RECORD DOCUMENTS HAVE BEEN PREPARED BASED ON INFORMATION PROVIDED BY OTHERS. THE CONSULTANT HAS NOT VERIFIED THE ACCURACY AND/OR COMPLETENESS OF THIS INFORMATION AND SHALL NOT BE RESPONSIBLE FOR ANY ERRORS OR OMISSIONS THAT MAY BE INCORPORATED AS A RESULT OF ERRONEOUS INFORMATION PROVIDED BY OTHERS.

SHEET NO.	INDEX OF DRAWINGS
	COVER SHEET
Q-1 to Q-4	QUANTITY SHEETS
R-1 to R-3	RIGHT-OF-WAY PLANS
D-1 to D-3	DEMOLITION PLANS
CS-1 to CS-7	CONSTRUCTION SEQUENCING PLANS
P-1 to P-2	PAVING TYPICAL SECTIONS
P-3 to P-14	PAVING PLANS, PROFILES & DETAILS
P-15	RETAINING WALL PLAN, PROFILE & DETAIL
P-16 to P-19	STRIPING PLANS
ST-1	DRAINAGE AREA MAP
ST-2 to ST-5	STORMWATER CALCULATIONS
ST-6 to ST-17	STORMWATER PLANS, PROFILES & DETAILS
W-1 to W-11	WATER & WASTEWATER PLAN/PROF. & DET.
S-1 to S-14	SIGNALIZATION PLANS & DETAILS
X-1 to X-10	CROSS SECTIONS
LA-1 to LA-7	LANDSCAPE LAYOUT PLANS
LC-1 to LC-4	LANDSCAPE CONSTRUCTION DETAILS
PL-1 to PL-7	PLANTING PLANS & DETAILS
IR-1 to IR-6	IRRIGATION PLANS
SE-1 to SE-6	SITE-ELECTRICAL PLANS



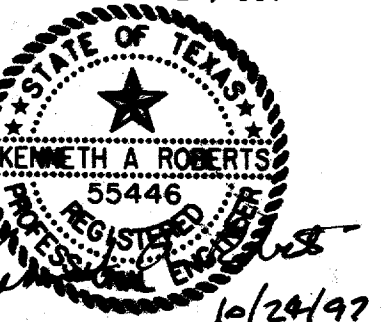
LOCATION MAP

OWNER:  
TOWN OF ADDISON  
DEPARTMENT OF PUBLIC WORKS  
16801 WESTGROVE  
P.O. BOX 144  
ADDISON, TEXAS 75001  
(972) 450-7018

ENGINEER:  
HUITT-ZOLLARS, INC.  
3131 MCKINNEY AVE., SUITE 600  
DALLAS, TEXAS 75204  
(214) 871-3311

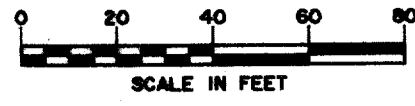
LANDSCAPE ARCHITECT:  
MESA DESIGN GROUP  
3100 MCKINNON ST., SUITE 905  
DALLAS, TEXAS 75201  
(214) 871-0568

THE SEAL APPEARING ON THIS DOCUMENT WAS AUTHORIZED BY KENNETH A. ROBERTS, P.E. 55446 ON OCTOBER 24, 1997.



ARAPAHO ROAD





**DALLAS AREA RAPID TRANSIT PROPERTY ACQUISITION**  
VOL. 910088 PG. 1390

DALLAS AREA RAPID TRANSIT  
VOL. 96899 PG. 05197

DALLAS AREA RAPID TRANSIT  
VOL. 96169 PG. 04485

JOSEPH H. JONES, BETH BRANDEBERRY,  
CAROLYN PERKINS SHIMER MERRITT AND  
SAMUEL THOMAS PERKINS, CO-TRUSTEES OF  
THE MARY CORFIELD TRUST, THE EVELYN C.  
JONES TRUST, THE BETH BRANDEBERRY TRUST  
AND THE CORINNE SHIMER TRUST AND  
A BEN PINNELL, JR.  
VOL. 97109 PG. 03158

MCM COMPANY  
VOL. 76212 PG. 3704  
VOL. 82179 PG. 1556  
VOL. 82179 PG. 1559  
VOL. 84008 PG. 1944  
VOL. 84153 PG. 0532

INTERNATIONAL GUARANTY CORP.  
VOL. 92001 PG. 0617

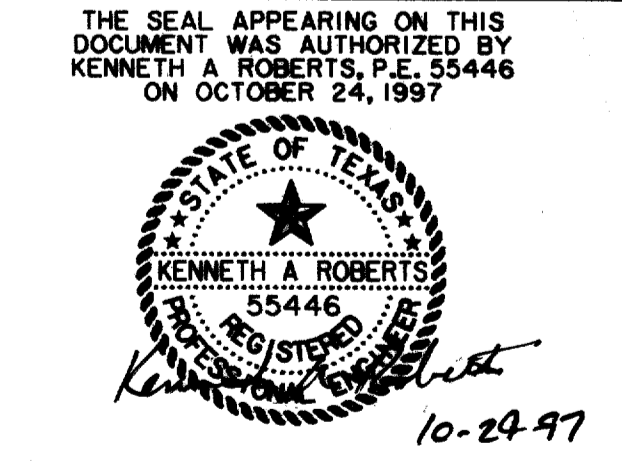
QUORUM CENTER LTD. P/S  
VOL. 42038 PG. 0247

QUORUM CENTRE ADDITION  
VOL. 84067 PG. 5718

QUORUM CENTRE ADDITION  
VOL. 84067 PG. 5718

QUORUM CENTRE - EAST NO. 2 ADDITION  
VOL. 96187 PG. 01867

RECORD DOCUMENTS 6/9/2000  
THESE RECORD DOCUMENTS HAVE BEEN PREPARED BASED ON  
INFORMATION PROVIDED BY OTHERS. THE CONSULTANT HAS  
NOT VERIFIED THE ACCURACY AND/OR COMPLETENESS OF THIS  
INFORMATION AND SHALL NOT BE RESPONSIBLE FOR ANY  
ERRORS OR OMISSIONS THAT MAY BE INCORPORATED AS A  
RESULT OF ERRONEOUS INFORMATION PROVIDED BY OTHERS.



REVISED  
1/16/98

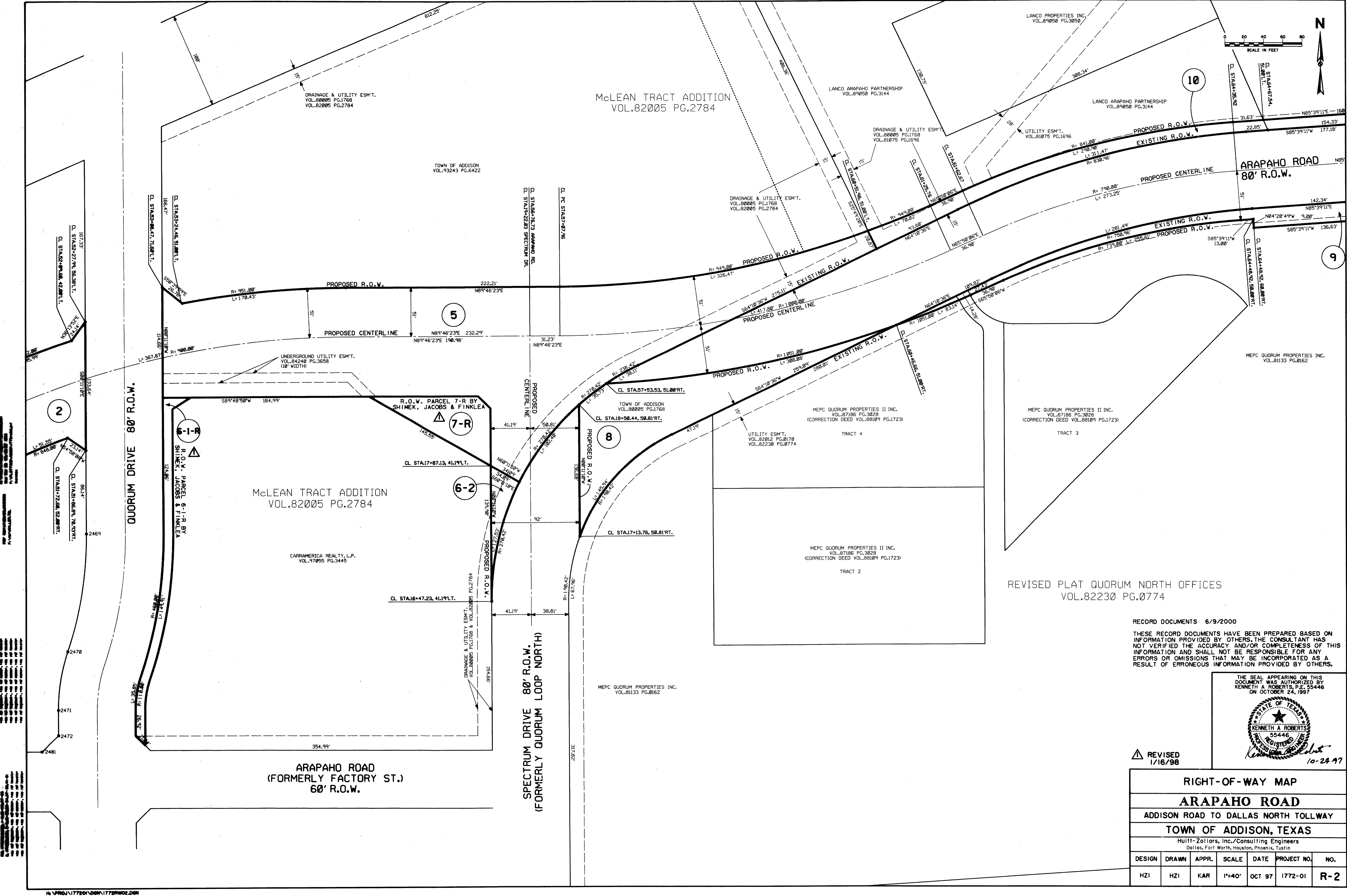
RIGHT-OF-WAY MAP						
ARAPAHO ROAD						
ADDISON ROAD TO DALLAS NORTH TOLLWAY						
TOWN OF ADDISON, TEXAS						
Hullitt-Zollars, Inc./Consulting Engineers Dallas, Fort Worth, Houston, Phoenix, Tustin						
DESIGN	DRAWN	APPR.	SCALE	DATE	PROJECT NO.	NO.
HZI	HZI	KAR	1"=40'	OCT 97	1772-01	R-1

ALL INFORMATION CONTAINED HEREIN IS UNCLASSIFIED  
 DATE 08-01-2001 BY 60322 UCBAW/STP

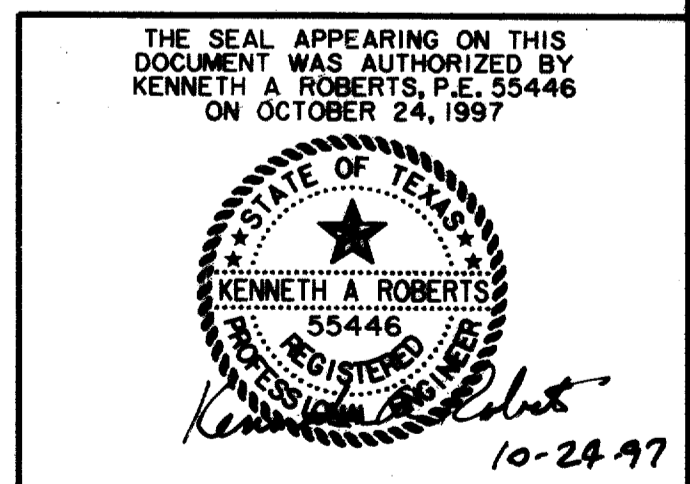
ALL INFORMATION CONTAINED HEREIN IS UNCLASSIFIED  
 DATE 08-01-2001 BY 60322 UCBAW/STP

ADDISON CAR CARE ADDITION  
VOL. 87111 PG. 0286

EDWARD COOK SURVEY ABSTRACT NO. 362  
G.W. FISHER SURVEY ABSTRACT NO. 482



RECORD DOCUMENTS 6/9/2000  
 THESE RECORD DOCUMENTS HAVE BEEN PREPARED BASED ON INFORMATION PROVIDED BY OTHERS. THE CONSULTANT HAS NOT VERIFIED THE ACCURACY AND/OR COMPLETENESS OF THIS INFORMATION AND SHALL NOT BE RESPONSIBLE FOR ANY ERRORS OR OMISSIONS THAT MAY BE INCORPORATED AS A RESULT OF ERRONEOUS INFORMATION PROVIDED BY OTHERS.



REVISÉ  
 1/16/98

RIGHT-OF-WAY MAP						
ARAPAHO ROAD						
ADDISON ROAD TO DALLAS NORTH TOLLWAY						
TOWN OF ADDISON, TEXAS						
Hult-Zollars, Inc./Consulting Engineers Dallas, Fort Worth, Houston, Phoenix, Tustin						
DESIGN	DRAWN	APPR.	SCALE	DATE	PROJECT NO.	NO.
HZI	HZI	KAR	1"=40'	OCT 97	1772-01	R-2



DALLAS AREA RAPID TRANSIT PROPERTY ACQUISITION  
VOL. 91800 PG. 1398

McLEAN TRACT ADDITION  
VOL. 82005 PG. 2784

TOWN OF ADDISON  
VOL. 93243 PG. 6422

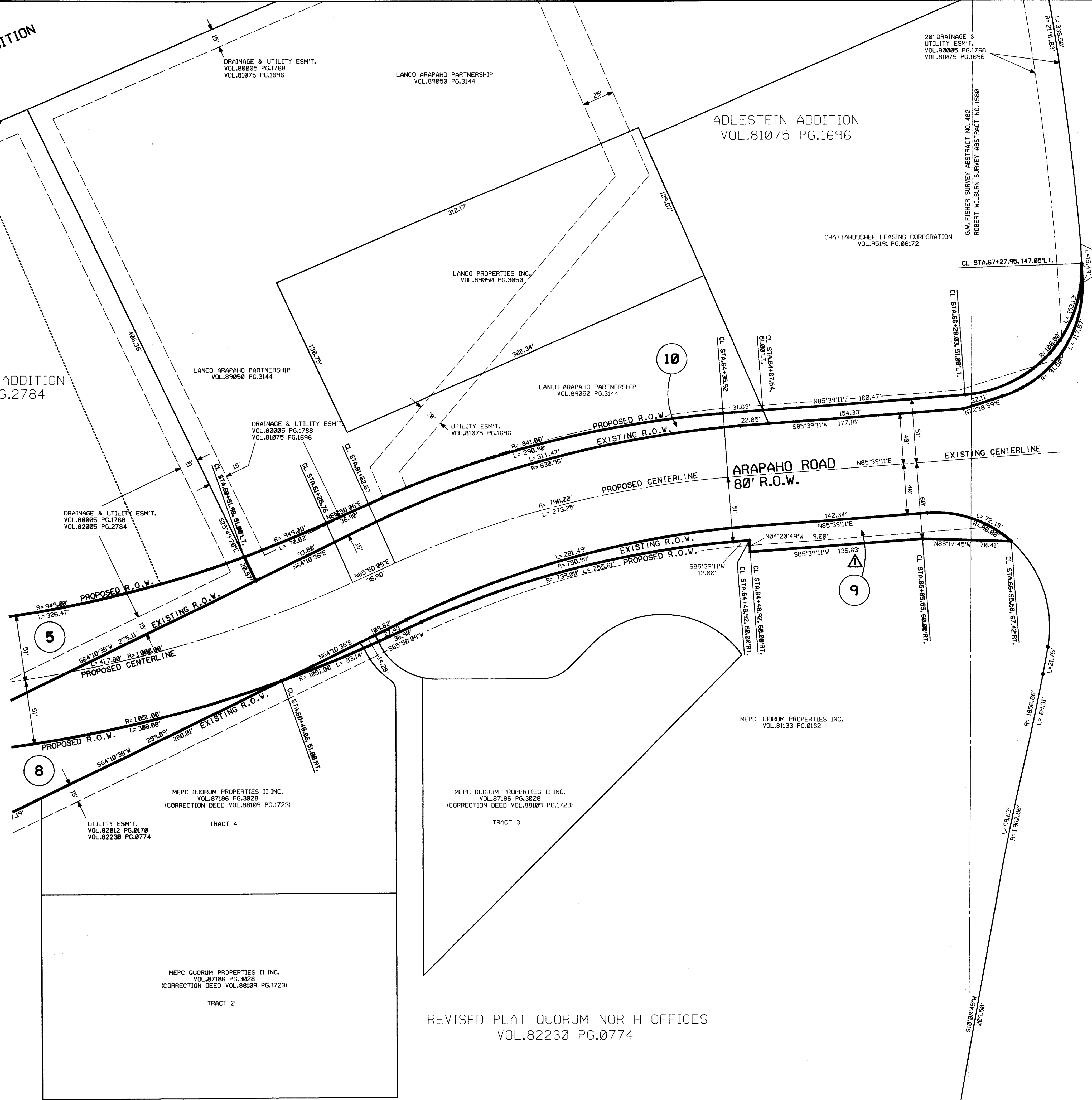
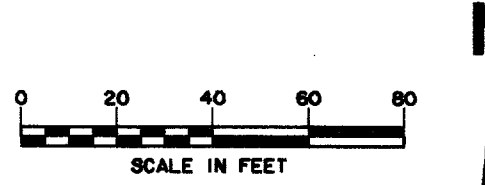
SEE PREVIOUS SHEET  
FOR THIS AREA

REVISED PLAT QUORUM NORTH OFFICES  
VOL. 82230 PG. 0774

ADLESTEIN ADDITION  
VOL. 81075 PG. 1696

ARAPAHO ROAD  
80' R.O.W.

DALLAS NORTH TOLLWAY  
(VARIABLE WIDTH)



RECORD DOCUMENTS 6/9/2000

THESE RECORD DOCUMENTS HAVE BEEN PREPARED BASED ON INFORMATION PROVIDED BY OTHERS. THE CONSULTANT HAS NOT VERIFIED THE ACCURACY AND/OR COMPLETENESS OF THIS INFORMATION AND SHALL NOT BE RESPONSIBLE FOR ANY ERRORS OR OMISSIONS THAT MAY BE INCORPORATED AS A RESULT OF ERRONEOUS INFORMATION PROVIDED BY OTHERS.

THE SEAL APPEARING ON THIS DOCUMENT WAS AUTHORIZED BY KENNETH A. ROBERTS, P.E. 55446 ON OCTOBER 24, 1997



REVISOR  
3/16/98

RIGHT-OF-WAY MAP						
ARAPAHO ROAD						
ADDISON ROAD TO DALLAS NORTH TOLLWAY						
TOWN OF ADDISON, TEXAS						
Huitl-Zollars, Inc./Consulting Engineers Dallas, Fort Worth, Houston, Phoenix, Tustin						
DESIGN	DRAWN	APPR.	SCALE	DATE	PROJECT NO.	NO.
HZI	HZI	KAR	1"=40'	OCT 97	1772-01	R-3