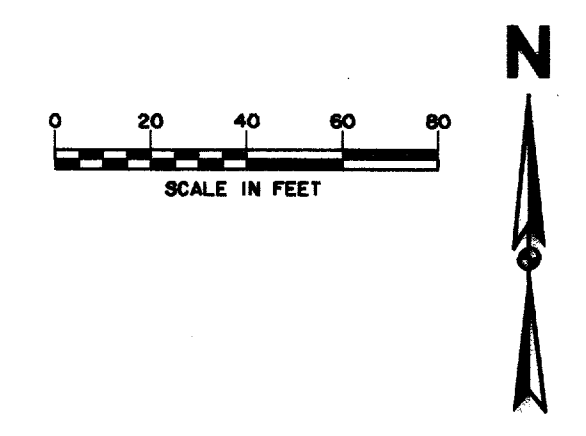


DALLAS AREA RAPID TRANSIT PROPERTY ACQUISITION
VOL. 91800 PG. 1398



TOWN OF ADDISON
VOL. 93243 PG. 6422

McLEAN TRACT ADDITION
VOL. 82005 PG. 2784

ADLESTEIN ADDITION
VOL. 81075 PG. 1696

DRAINAGE & UTILITY ESMT.
VOL. 80005 PG. 1768
VOL. 81075 PG. 1696

LANCO ARAPAHO PARTNERSHIP
VOL. 89050 PG. 3144

20' DRAINAGE & UTILITY ESMT.
VOL. 80005 PG. 1768
VOL. 81075 PG. 1696

CHATTAHOOCHEE LEASING CORPORATION
VOL. 95191 PG. 06172

LANCO PROPERTIES INC.
VOL. 89050 PG. 3050

LANCO ARAPAHO PARTNERSHIP
VOL. 89050 PG. 3144

LANCO ARAPAHO PARTNERSHIP
VOL. 89050 PG. 3144

DRAINAGE & UTILITY ESMT.
VOL. 80005 PG. 1768
VOL. 81075 PG. 1696

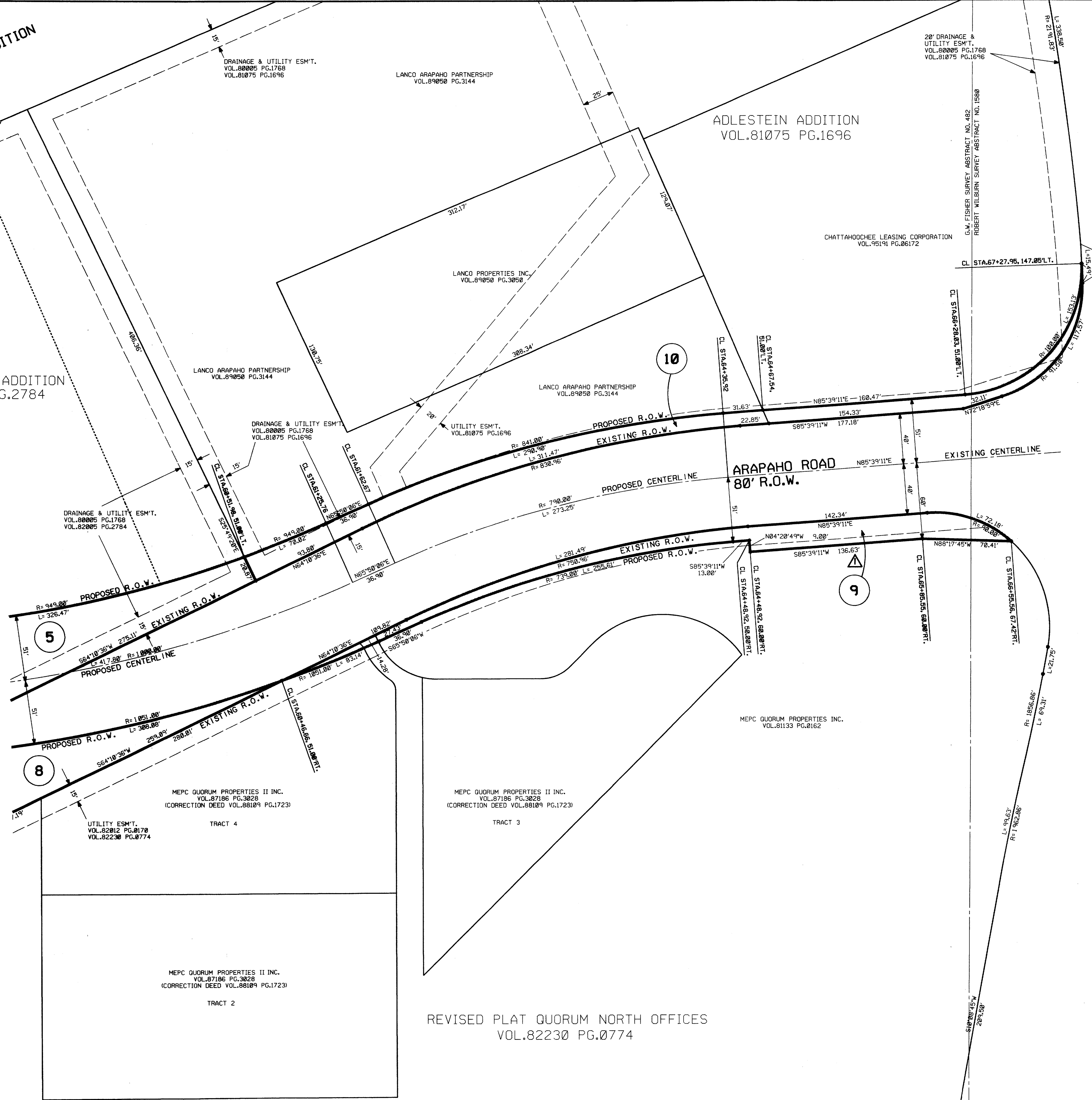
UTILITY ESMT.
VOL. 81075 PG. 1696

DRAINAGE & UTILITY ESMT.
VOL. 80005 PG. 1768
VOL. 82005 PG. 2784

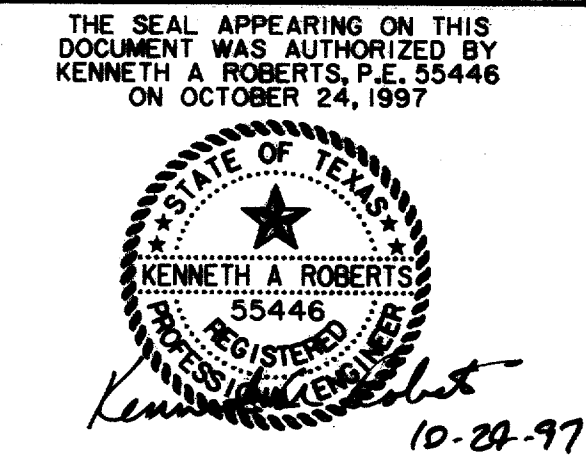
ARAPAHO ROAD
80' R.O.W.

DALLAS NORTH TOLLWAY (VARIABLE WIDTH)

SEE PREVIOUS SHEET
FOR THIS AREA



RECORD DOCUMENTS 6/9/2000
THESE RECORD DOCUMENTS HAVE BEEN PREPARED BASED ON INFORMATION PROVIDED BY OTHERS. THE CONSULTANT HAS NOT VERIFIED THE ACCURACY AND/OR COMPLETENESS OF THIS INFORMATION AND SHALL NOT BE RESPONSIBLE FOR ANY ERRORS OR OMISSIONS THAT MAY BE INCORPORATED AS A RESULT OF ERRONEOUS INFORMATION PROVIDED BY OTHERS.



REVISOR
3/16/98

RIGHT-OF-WAY MAP						
ARAPAHO ROAD						
ADDISON ROAD TO DALLAS NORTH TOLLWAY						
TOWN OF ADDISON, TEXAS						
Huitl-Zollars, Inc./Consulting Engineers Dallas, Fort Worth, Houston, Phoenix, Tustin						
DESIGN	DRAWN	APPR.	SCALE	DATE	PROJECT NO.	NO.
HZI	HZI	KAR	1"=40'	OCT 97	1772-01	R-3

REVISED PLAT QUORUM NORTH OFFICES
VOL. 82230 PG. 0774