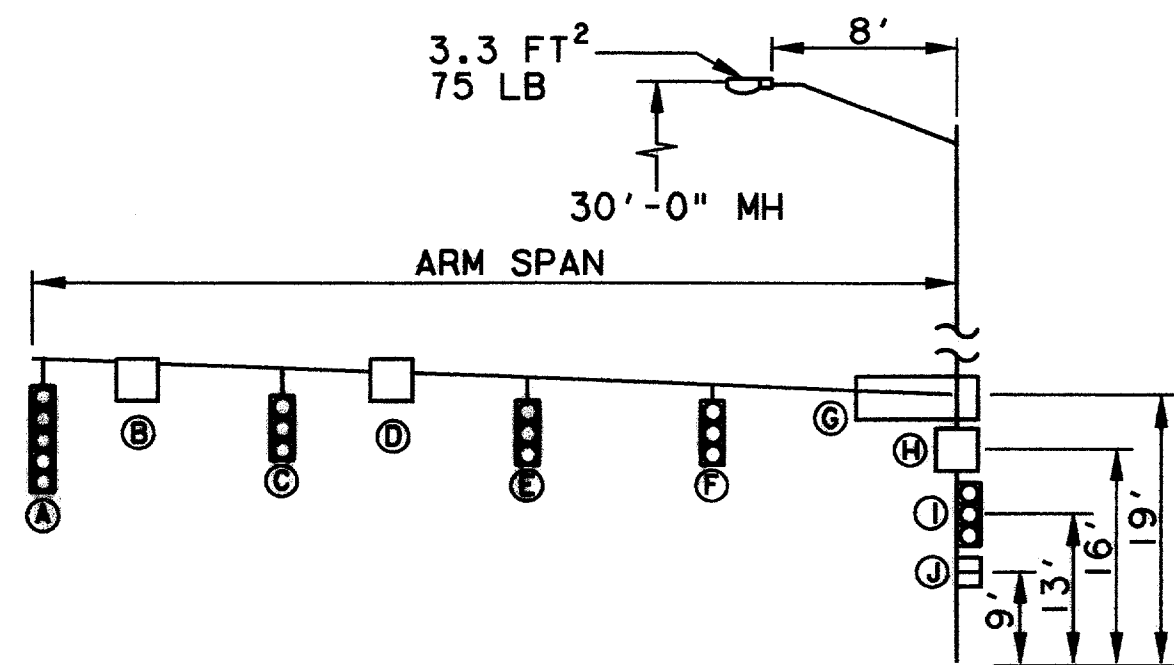


POLE TOP
NO SCALE



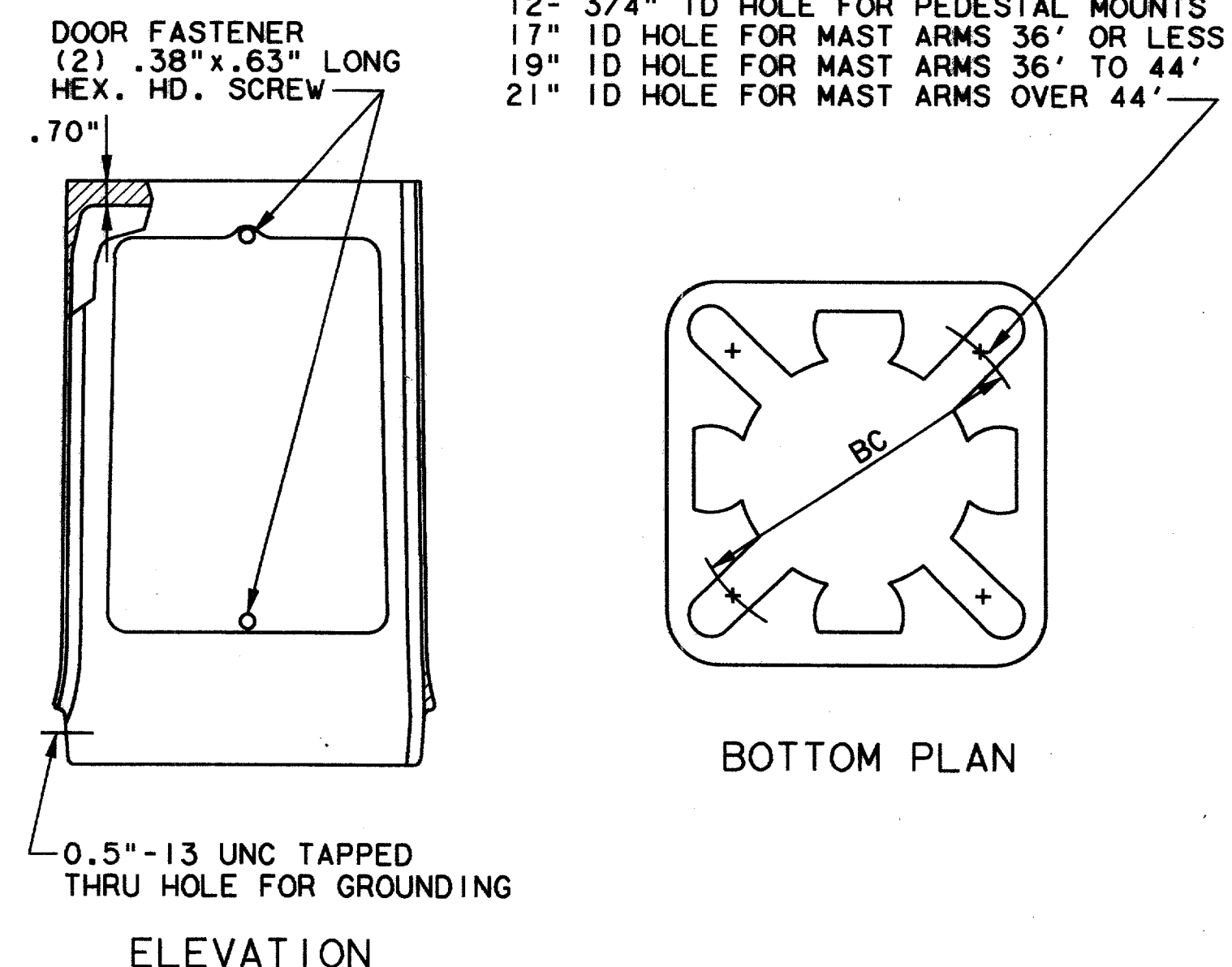
ARM SPAN	DISTANCE FROM POLE TO DEVICE (FT)						
	A	B	C	D	E	F	G
20	19	14	N.A.	N.A.	N.A.	N.A.	2
24	23	18	11	N.A.	N.A.	N.A.	2
28	27	22	15	N.A.	N.A.	N.A.	2
32	31	26	16	N.A.	N.A.	N.A.	2
36	35	24	23	12	N.A.	N.A.	2
40	39	34	26	13	N.A.	N.A.	2
44	43	28	28	20	12	N.A.	2
48	47	42	34	28	23	10	2

N.A. = NOT APPLICABLE

ALL STRUCTURES ARE DESIGNED TO THE 1985 (80 MPH) TXDOT STANDARD SPECIFICATIONS FOR STRUCTURAL SUPPORTS FOR SIGNS, LUMINAIRES, AND TRAFFIC SIGNALS.

DEVICE	DESCRIPTION	PROJ AREA (FT²)	WEIGHT (LBS)
(A) SIGNAL	12"-5 SEC WITH BACKPLATES	13.33	55
(B & D) SIGN	REGULATORY 30"x30"	6.25	15
(C & E) SIGNAL	12"-3 SEC WITH BACKPLATES	8.67	40
(G) SIGN	STREET NAME 24"x96"	16.00	50
(H) SIGN	REGULATORY 24"x24"	4.00	10
(I) SIGNAL	DUAL-12"-3 SEC WITH BACKPLATES	17.34	80
(J) SIGNAL	DUAL-PEDESTRIAN SIGNAL	8.00	60

LOADING INFORMATION



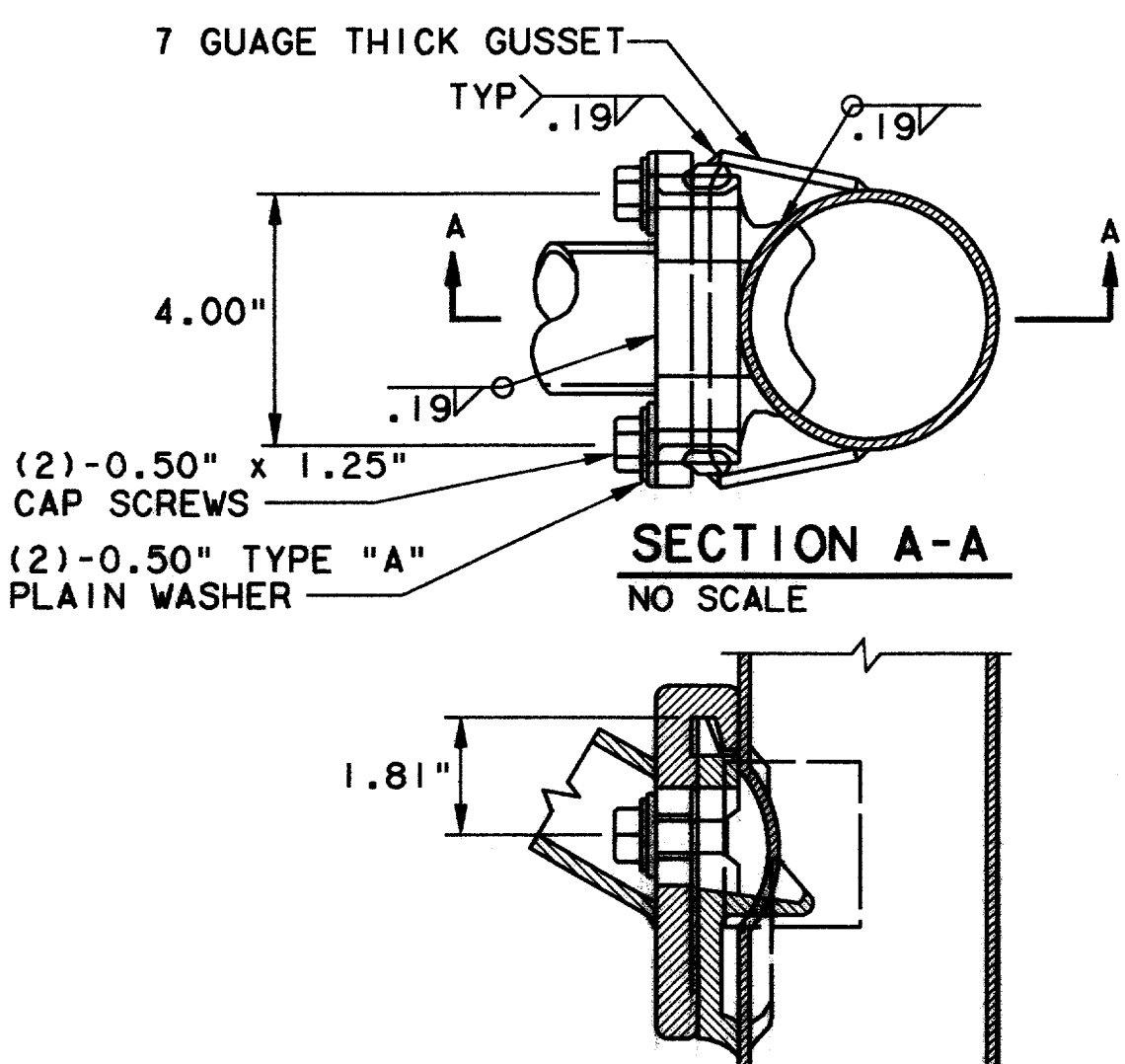
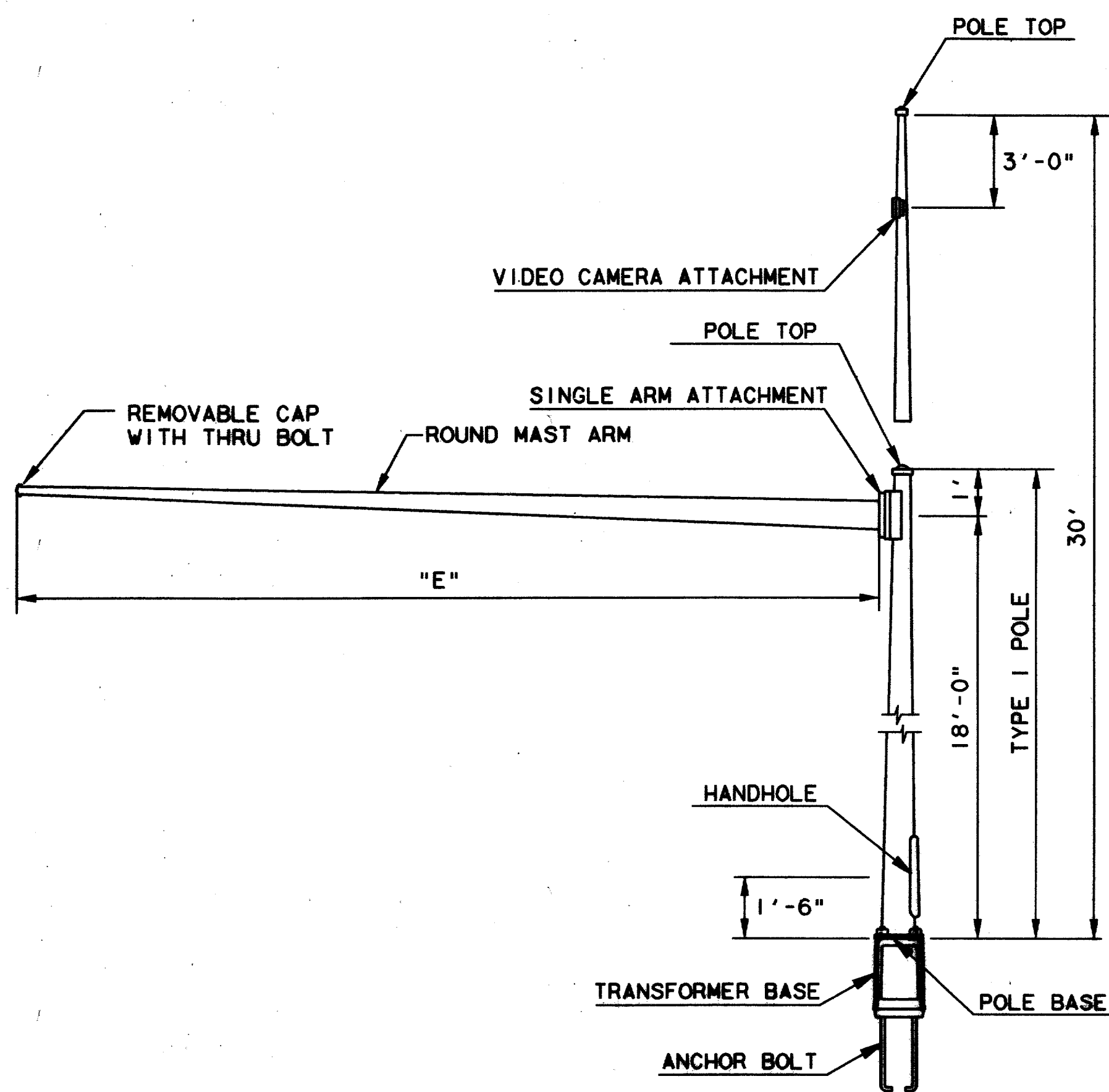
ELEVATION

BOTTOM PLAN

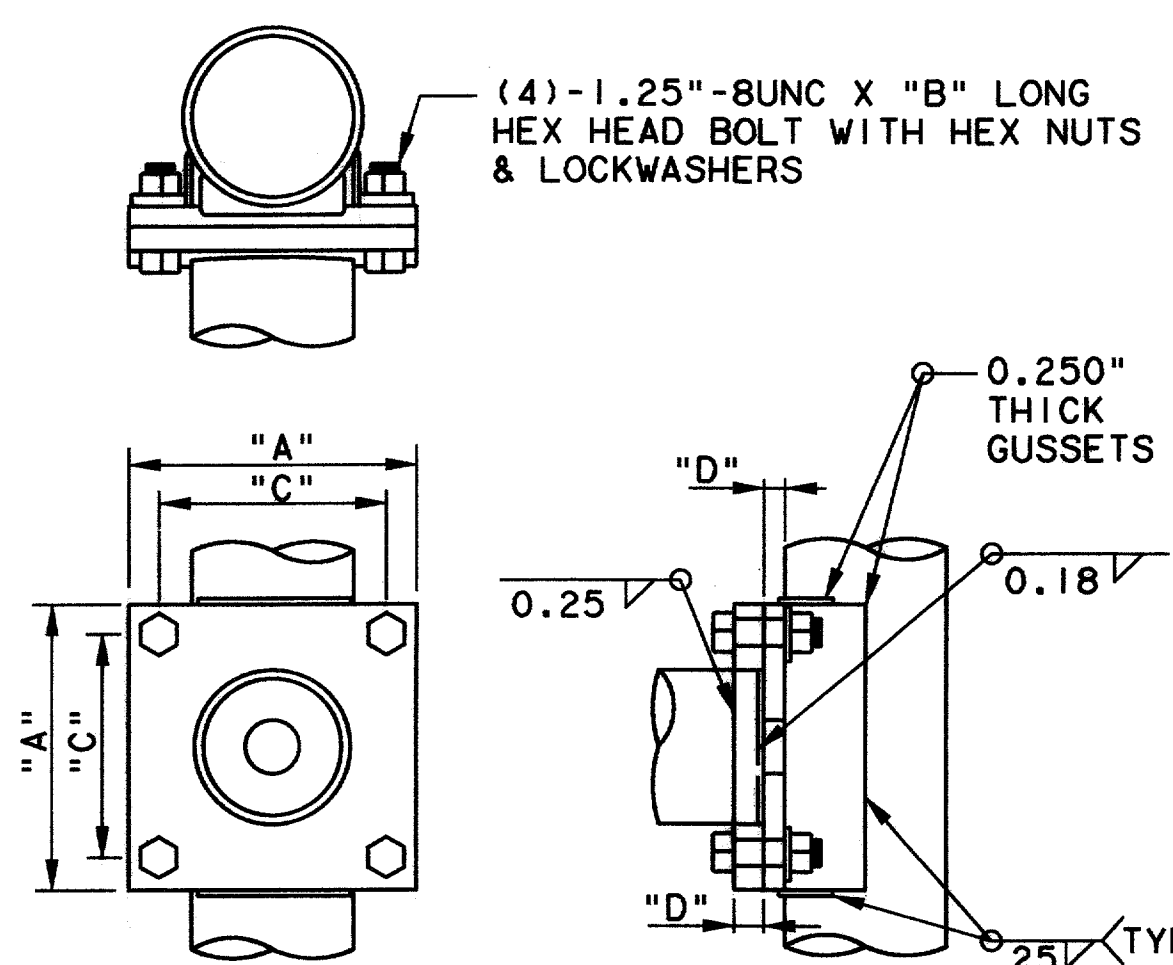
TRANSFORMER BASE NOTES:

- DOOR OPENING APPROXIMATELY 8" X 10 1/2" X 19 1/2"
- TOP BOLT HOLES WILL ACCOMMODATE MAXIMUM 1.00" DIA BOLTS.
- (4)-2.75" O.D. X 0.500" THICK FLAT WASHERS WITH HEX. HEAD CONNECTING BOLT WITH HEX. NUTS (ASTM: A325, NUTS A563 GR DH) TOP OF TRANSFORMER BASE.
- (4)-2.50" O.D. X 0.375" THICK HOLDOWN WASHERS FINISHED TO ASTM: B695 CLASS 50 PROVIDED FOR INSTALLATION UNDER THE TRANSFORMER BASE TOP PLATE.
- (4) NUT COVERS WITH STAINLESS STEEL DRIVE SCREWS TO COVER THE HEX HEAD BOLTS ON THE TOP OF TRANSFORMER BASE.
- BASE CONFORMS TO BREAKAWAY CRITERIA OF AASHTO STANDARD SPECIFICATIONS FOR STRUCTURAL SUPPORTS, FOR HIGHWAY SIGNS, LUMINAIRES AND TRAFFIC SIGNALS (1975).

TRANSFORMER BASE
NOT TO SCALE



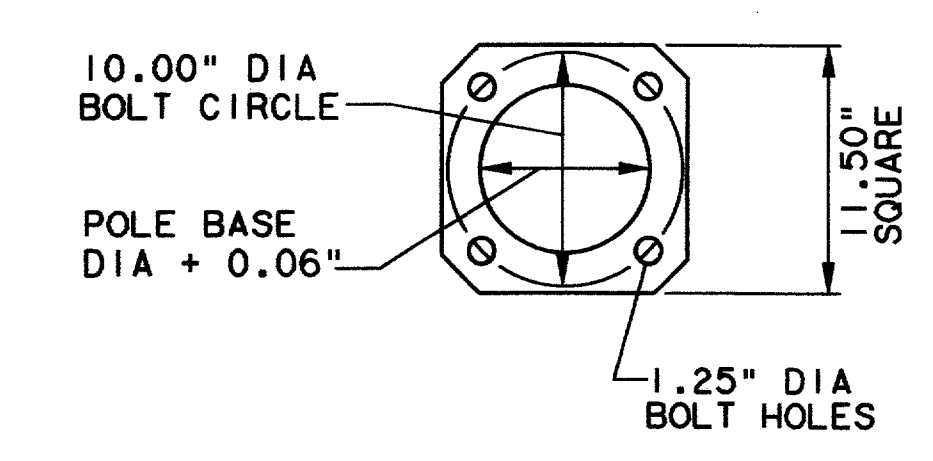
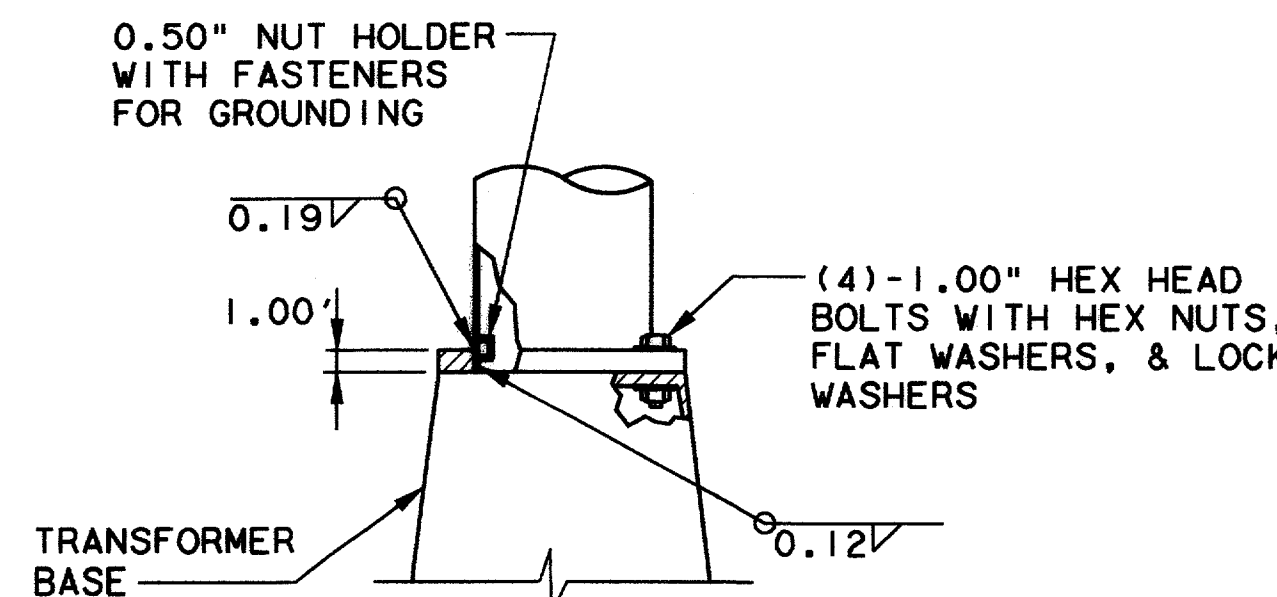
LUMINAIRE ARM ATTACHMENT
NO SCALE



SINGLE ARM ATTACHMENT
NO SCALE

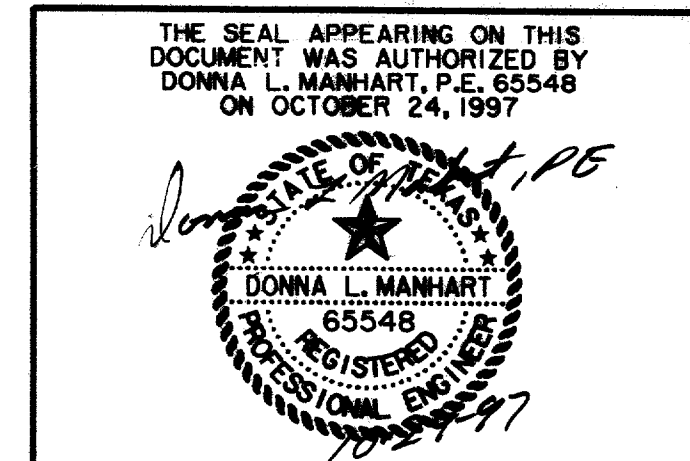
MATERIAL DATA					
COMPONENT	ASTM DESIGNATION	MIN YIELD (KSI)	COMPONENT	ASTM DESIGNATION	MIN YIELD (KSI)
TUBE - 7 & 3 GAUGE	A595 GR.A	55	POLE BASE - 7 & 3 GA.	A36	36
TUBE - ALL OTHERS	A572 GR.65	60	POLE BASE - ALL OTHERS	A572 GR.42	42
LUMINAIRE ARM PIPE	2" SCHED.40	36	SIGNAL ARM ATTACHMENT	A36	36
LUMINAIRE ARM ATTACHMENT	A27GR.65-35		SIGNAL ARM BOLTS	A325	92
ANCHOR BOLTS	A36-MOD.	55	LUMINAIRE ARM BOLTS	SAE GR.5	
GALVANIZING	A123 & A153				

POLE AND SIGNAL ARM DATA														
DESIGNATION KEY			POLE DATA				SIGNAL ARM DATA				SIGNAL ARM ATTACHMENT DATA			
POLE SERIES	POLE TYPE	SIGNAL ARM SPAN	BASE DIA	TOP DIA	LENGTH	GAUGE (THK)	FIXED END DIA	FREE END DIA	LENGTH "E"	GAUGE (INCHES)	PLATE SQUARE "A"	PLATE THICKNESS "D"	BOLT LENGTH "B"	BOLT SPACING "C"
DAL	1	20'	10.00"	7.50"	19'	0.179"	6.50"	3.80"	19.1'	0.179	11.00"	1.25"	4.50"	8.00"
DAL	1	24'	11.00"	8.50"	19'	0.179"	7.50"	4.30"	23.1'	0.179	11.00"	1.25"	4.50"	8.00"
DAL	1	28'	11.50"	9.00"	19'	0.179"	8.00"	4.20"	27.1'	0.179	11.00"	1.25"	4.50"	8.00"
DAL	1	32'	12.00"	9.50"	19'	0.179"	9.00"	4.70"	31.0'	0.179	13.00"	1.25"	4.50"	10.00"
DAL	1	36'	12.50"	10.00"	19'	0.179"	9.50"	4.60"	35.0'	0.179	13.00"	1.25"	4.50"	10.00"
DAL	1	40'	12.00"	9.50"	19'	0.239"	9.50"	4.10"	39.0'	0.239	13.00"	1.25"	4.50"	10.00"
DAL	1	44'	12.50"	10.00"	19'	0.239"	10.00"	4.10"	43.0'	0.239	14.00"	1.50"	5.00"	11.00"
DAL	1	48'	13.00"	10.50"	19'	0.239"	10.50"	4.10"	47.0'	0.239	14.00"	1.50"	5.00"	11.00"
DAL	2	20'	10.00"	5.00"	30'	0.179"	6.50"	3.80"	19.1'	0.179	11.00"	1.25"	4.50"	8.00"
DAL	2	24'	11.00"	6.80"	30'	0.179"	7.50"	4.30"	23.1'	0.179	11.00"	1.25"	4.50"	8.00"
DAL	2	28'	11.50"	7.30"	30'	0.179"	8.00"	4.20"	27.1'	0.179	11.00"	1.25"	4.50"	8.00"
DAL	2	32'	12.00"	7.80"	30'	0.179"	9.00"	4.70"	31.0'	0.179	13.00"	1.25"	4.50"	10.00"
DAL	2	36'	12.50"	8.30"	30'	0.179"	9.50"	4.60"	35.0'	0.179	13.00"	1.25"	4.50"	10.00"
DAL	2	40'	12.00"	7.80"	30'	0.239"	9.50"	4.10"	39.0'	0.239	13.00"	1.25"	4.50"	10.00"
DAL	2	44'	12.50"	8.30"	30'	0.239"	10.00"	4.10"	43.0'	0.239	14.00"	1.50"	5.00"	11.00"
DAL	2	48'	13.00"	8.80"	30'	0.239"	10.50"	4.10"	47.0'	0.239	14.00"	1.50"	5.00"	11.00"



POLE BASE
NO SCALE

RECORD DOCUMENTS 6/9/2000
THESE RECORD DOCUMENTS HAVE BEEN PREPARED BASED ON INFORMATION PROVIDED BY OTHERS. THE CONSULTANT HAS NOT VERIFIED THE ACCURACY AND/OR COMPLETENESS OF THIS INFORMATION AND SHALL NOT BE RESPONSIBLE FOR ANY ERRORS OR OMISSIONS THAT MAY BE INCORPORATED AS A RESULT OF ERRONEOUS INFORMATION PROVIDED BY OTHERS.



TRAFFIC SIGNAL POLE, MAST ARM AND TRANSFORMER BASE DETAILS						
ARAPAHO ROAD						
ADDISON ROAD TO DALLAS NORTH TOLLWAY						
TOWN OF ADDISON, TEXAS						
Huiit-Zollars, Inc./Consulting Engineers Dallas, Fort Worth, Houston, Phoenix, Tustin						
DESIGN	DRAWN	APPR.	SCALE	DATE	PROJECT NO.	NO.
HZI	HZI	DLM	NTS	OCT 97	1772-01	S-9