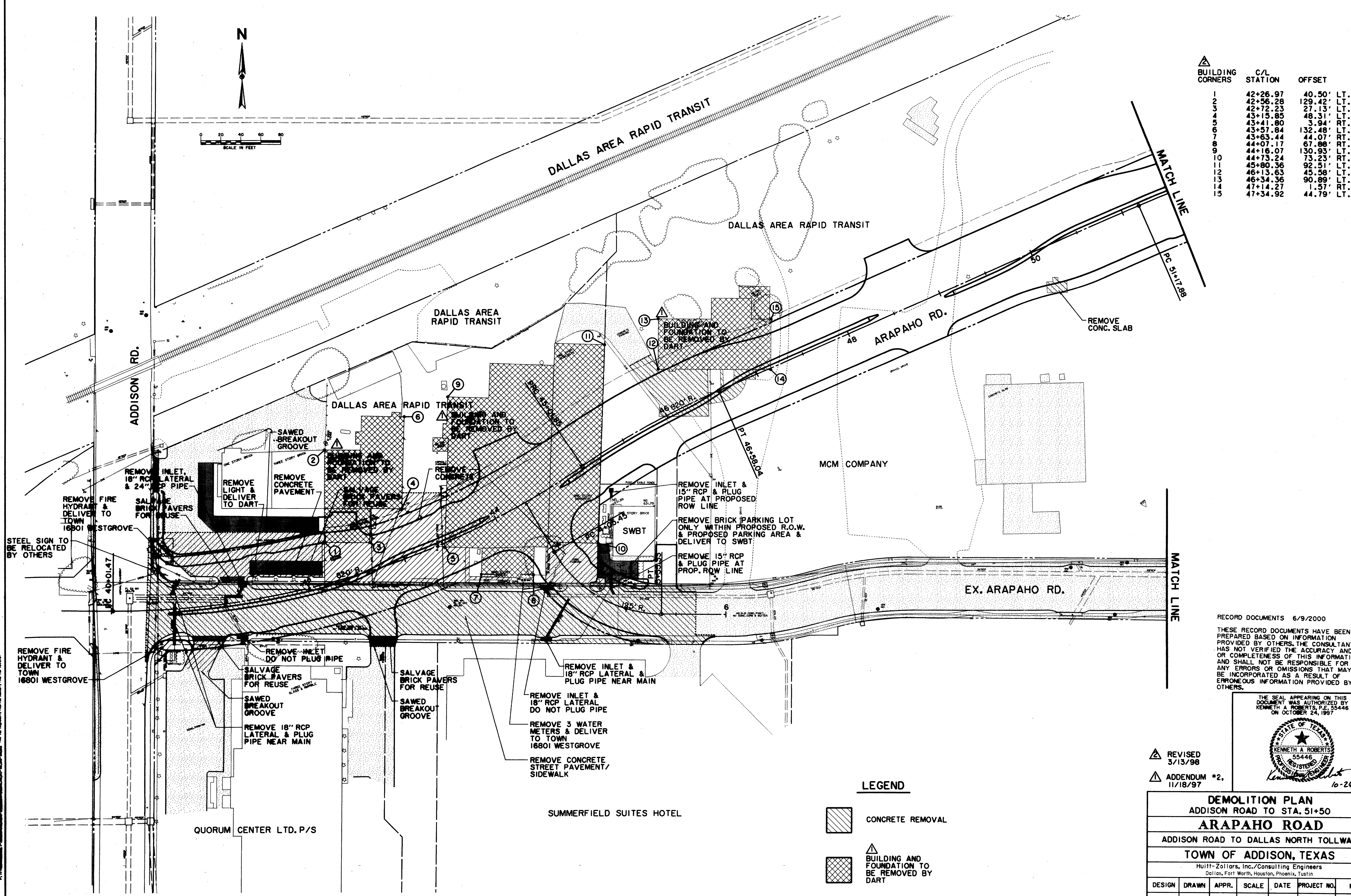


BUILDING CORNERS	C/L STATION	OFFSET	
1	42+26.97	40.50'	LT.
2	42+56.28	129.42'	LT.
3	42+72.23	27.13'	LT.
4	43+15.85	48.31'	LT.
5	43+41.80	3.94'	RT.
6	43+57.84	132.48'	LT.
7	43+63.44	44.07'	RT.
8	44+07.17	67.86'	RT.
9	44+16.07	130.93'	LT.
10	44+73.24	73.23'	RT.
11	45+80.36	92.51'	LT.
12	46+13.63	45.58'	LT.
13	46+34.36	90.89'	LT.
14	47+14.27	57.57'	RT.
15	47+34.92	44.79'	LT.



RECORD DOCUMENTS 6/9/2000

THESE RECORD DOCUMENTS HAVE BEEN PREPARED BASED ON INFORMATION PROVIDED BY OTHERS. THE CONSULTANT HAS NOT VERIFIED THE ACCURACY AND/OR COMPLETENESS OF THIS INFORMATION AND SHALL NOT BE RESPONSIBLE FOR ANY ERRORS OR OMISSIONS THAT MAY BE INCORPORATED AS A RESULT OF ERRONEOUS INFORMATION PROVIDED BY OTHERS.

THE SEAL APPEARING ON THIS DOCUMENT WAS AUTHORIZED BY KENNETH A. ROBERTS, P.E. 55446 ON OCTOBER 24, 1997



REVISD 3/13/98

ADDENDUM #2. 11/18/97

LEGEND

- CONCRETE REMOVAL
- BUILDING AND FOUNDATION TO BE REMOVED BY DART

DEMOLITION PLAN						
ADDISON ROAD TO STA. 51+50						
ARAPAHO ROAD						
ADDISON ROAD TO DALLAS NORTH TOLLWAY						
TOWN OF ADDISON, TEXAS						
<small>Hull-201ars, Inc./Consulting Engineers Dallas, Fort Worth, Houston, Phoenix, Tustin</small>						
DESIGN	DRAWN	APPR.	SCALE	DATE	PROJECT NO.	NO.
HZI	HZI	KAR	1"=40'	OCT 97	1772-01	D-1