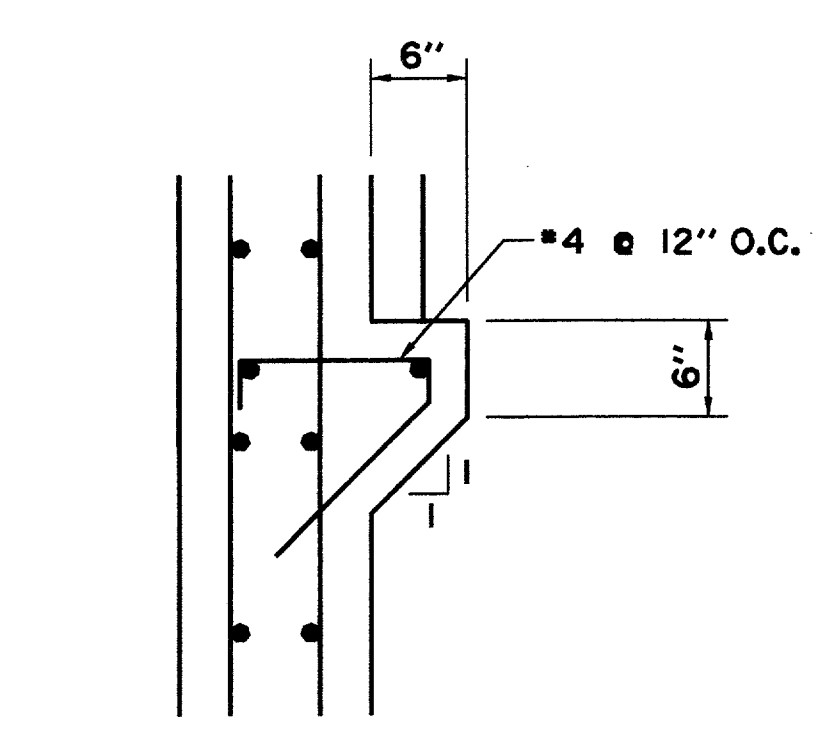
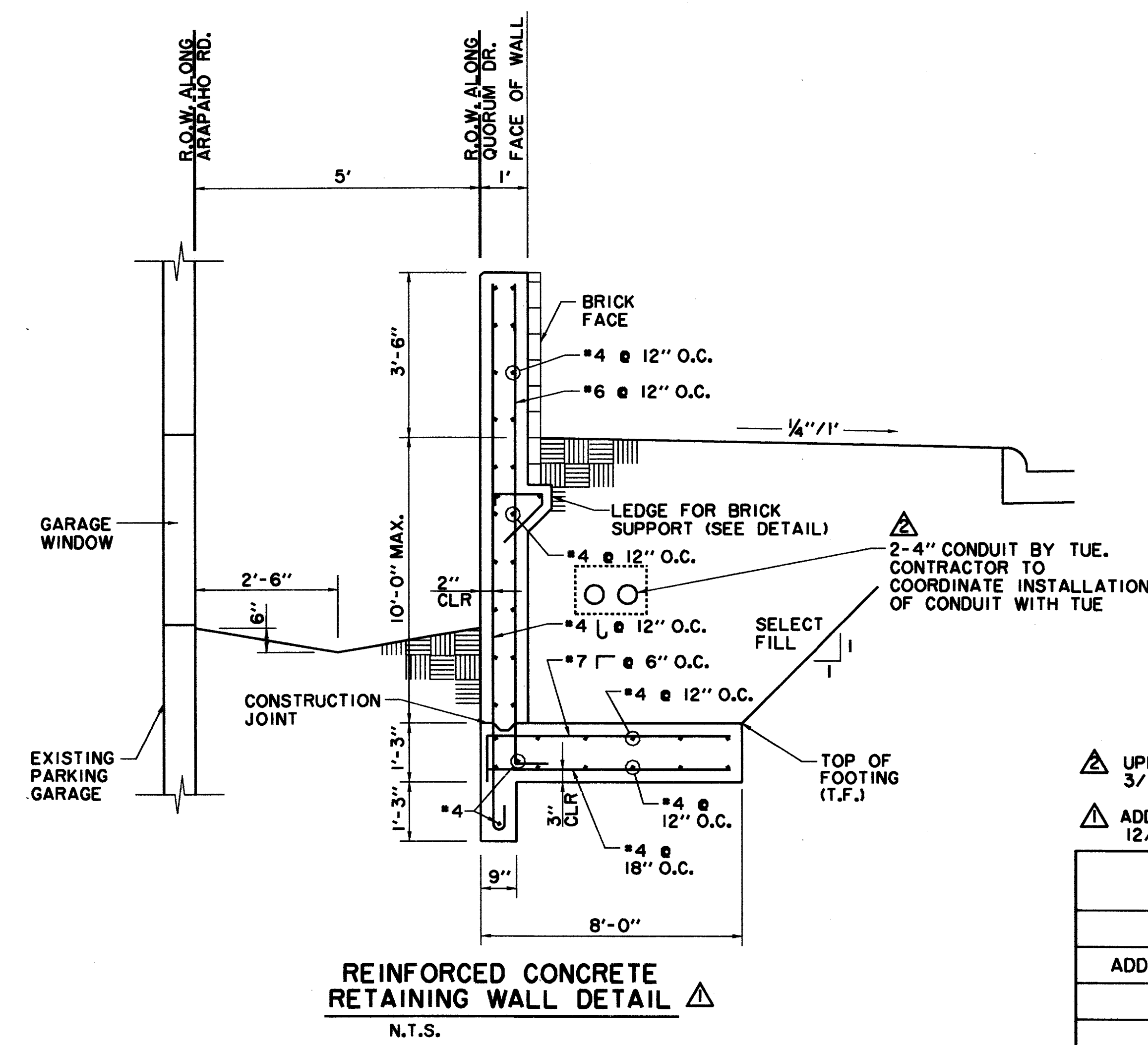
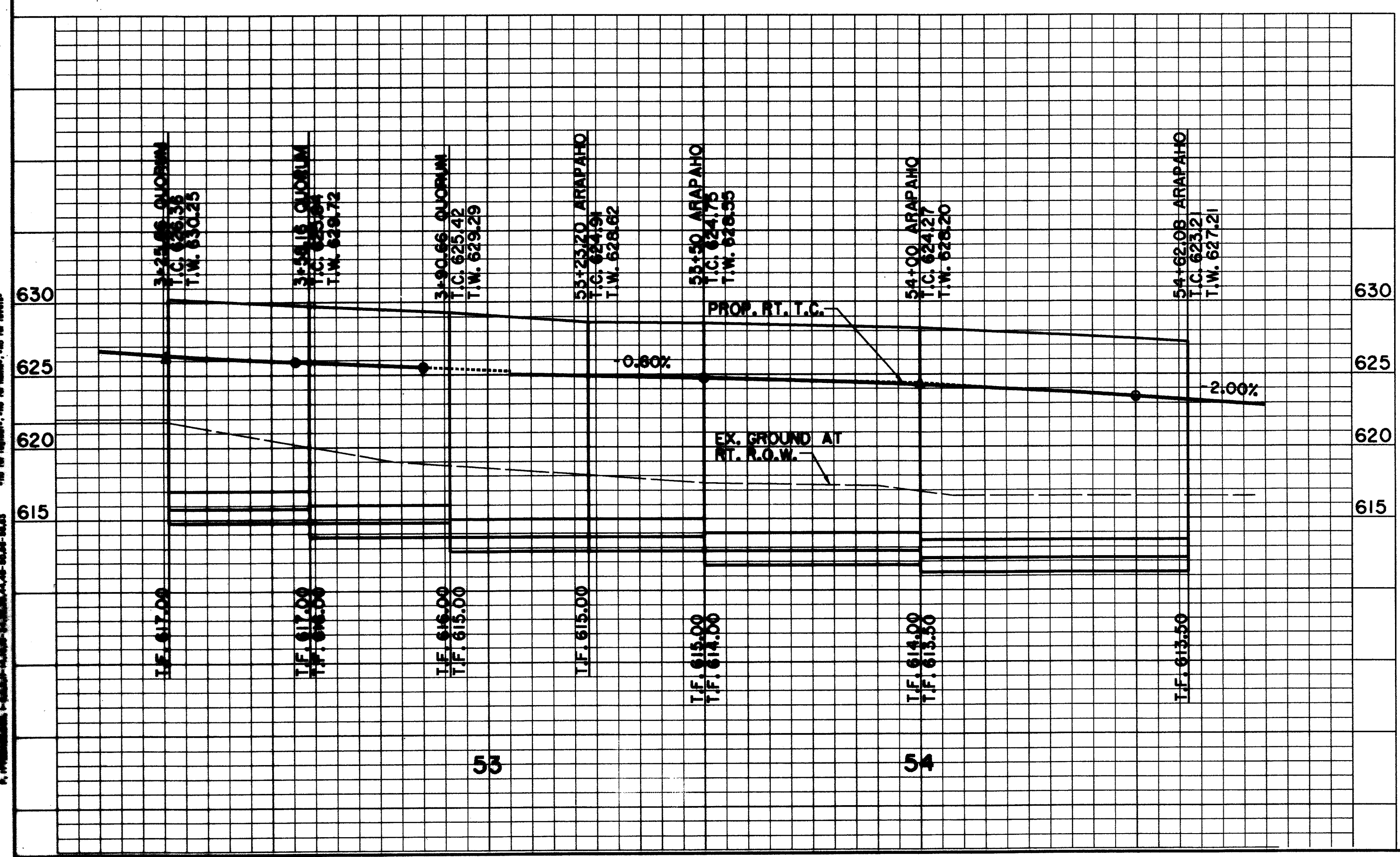


- GENERAL NOTES:**
1. SELECT FILL MATERIAL SHALL CONSIST OF INORGANIC NONEXPANSIVE SOIL OR ROCK WITH A PLASTICITY INDEX BETWEEN 4 AND 12. THE MATERIAL SHALL BE FREE OF CLAY LUMPS, ROCKS IN EXCESS OF 4 INCHES IN DIAMETER, AND OTHER DELETERIOUS MATERIAL.
 2. SELECT MATERIAL SHALL BE PLACED IN LOOSE LIFTS NOT TO EXCEED 8 INCHES IN THICKNESS AND COMPACTED TO BETWEEN 95% AND 100% OF STANDARD PROCTOR DENSITY AT OPTIMUM MOISTURE CONTENT (-0% + 3%).
 3. THE COMPACTION OF BACKFILL WITHIN 5'-0" OF WALL SHALL BE ACHIEVED USING HAND COMPACTION EQUIPMENT.
 4. REINFORCING STEEL SHALL BE NEW DOMESTIC DEFORMED BILLET STEEL CONFORMING TO ASTM A-615, GRADE 60.
 5. DETAIL REINFORCING BARS AND PROVIDE BAR SUPPORTS AND SPACES IN ACCORDANCE WITH THE LATEST EDITION OF THE ACI DETAILING MANUAL.
 6. REINFORCING BARS SHALL BE SUPPORTED, SPACED AND ACCURATELY SECURED IN PLACE BY BOLSTERS, SPACERS OR CHAIRS IN ACCORDANCE WITH SPECIFICATIONS FOR PLACING REINFORCEMENTS OF THE ACI "MANUAL OF STANDARD PRACTICE FOR DETAILING REINFORCED CONCRETE STRUCTURES".
 7. ALL REINFORCING STEEL SHALL BE LAPPED A MINIMUM OF 36 BAR DIAMETERS AT ALL CORNERS AND AT ALL SPLICE POINTS UNLESS OTHERWISE NOTED.
 8. FIVE TO SEVEN PERCENT AIR ENTRAINMENT SHALL BE ADDED TO CONCRETE USED FOR STRUCTURAL ELEMENTS EXPOSED TO WEATHER, UNLESS SPECIFIED OTHERWISE ON THE PLANS.
 9. CHAMFER ALL EXPOSED CORNERS 3/4" INCHES
 10. CONCRETE FOR ALL RETAINING WALLS AND JUNCTION STRUCTURES SHALL BE CLASS "C" WITH A MINIMUM COMPRESSIVE STRENGTH OF 3600 PSI AT 28 DAYS.
 11. WHERE INDICATED ON THE DRAWINGS, ROUGHENED SURFACES SHALL BE PROVIDED BY MEANS OF HEAVY RAKING OR GROOVING TO A FULL AMPLITUDE OF 1/4" INCH. ALL INTERFACING SURFACES MUST BE CLEAN AND FREE OF LAITANCE.
 12. ALL ITEMS TO BE CAST IN CONCRETE SUCH AS REINFORCING, DOWELS, BOLTS, ANCHORS, PIPE SLEEVES, ETC., SHALL BE SURELY POSITIONED IN THE FORMS BEFORE PLACING CONCRETE.
 13. THE KEYWAY AND FOOTING SHALL BE POURED DIRECTLY AGAINST UNDISTURBED SOIL WITHIN 48 HOURS AFTER EXCAVATION.
 14. ALL EXPOSED SURFACES ON THE RETAINING WALL SHALL BE STAINED WITH A WATER REPELLANT (PIGMENTED) STAIN MANUFACTURED BY UNITED COATINGS, EAST 19011 CATALDO, GREENACRES, WA 99016 OR APPROVED EQUAL. COLOR SELECTION SHALL BE APPROVED BY THE OWNER PRIOR TO APPLICATION.



BRICK LEDGE DETAIL
SCALE: 1" = 1'-0"



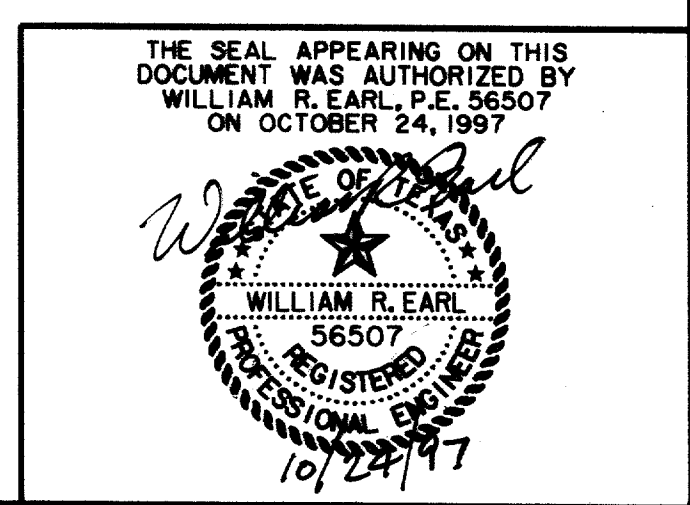
RECORD DOCUMENTS 6/9/2000

THESE RECORD DOCUMENTS HAVE BEEN PREPARED BASED ON INFORMATION PROVIDED BY OTHERS. THE CONSULTANT HAS NOT VERIFIED THE ACCURACY AND/OR COMPLETENESS OF THIS INFORMATION AND SHALL NOT BE RESPONSIBLE FOR ANY ERRORS OR OMISSIONS THAT MAY BE INCORPORATED AS A RESULT OF ERRONEOUS INFORMATION PROVIDED BY OTHERS.

BENCHMARKS:

USC & GS E-921 DISK IN BRICK WALL OF OLD ADDISON SCHOOL HOUSE (MAGIC TIME MACHINE RESTAURANT) ON SOUTH WALL, 4' EAST OF CENTER OF THE ENTRANCE, 4.7' ABOVE THE GROUND, ELEV. 650.61

'I' ON SOUTHEAST CORNER OF CONCRETE WALK AT FRONT ENTRANCE TO 4805 ARAPAHO ROAD, ELEV. 630.61



△ UPDATED 3/16/98
△ ADDENDUM #4, 12/19/97

RETAINING WALL						
PLAN, PROFILE & DETAILS						
ARAPAHO ROAD						
ADDISON ROAD TO DALLAS NORTH TOLLWAY						
TOWN OF ADDISON, TEXAS						
Huff-Zollars, Inc./Consulting Engineers Dallas, Fort Worth, Houston, Phoenix, Tucson						
DESIGN	DRAWN	APPR.	SCALE	DATE	PROJECT NO.	NO.
HZI	HZI	WRE	H _v 1"=20' V _v 1"=6'	OCT 97	1772-01	P-15