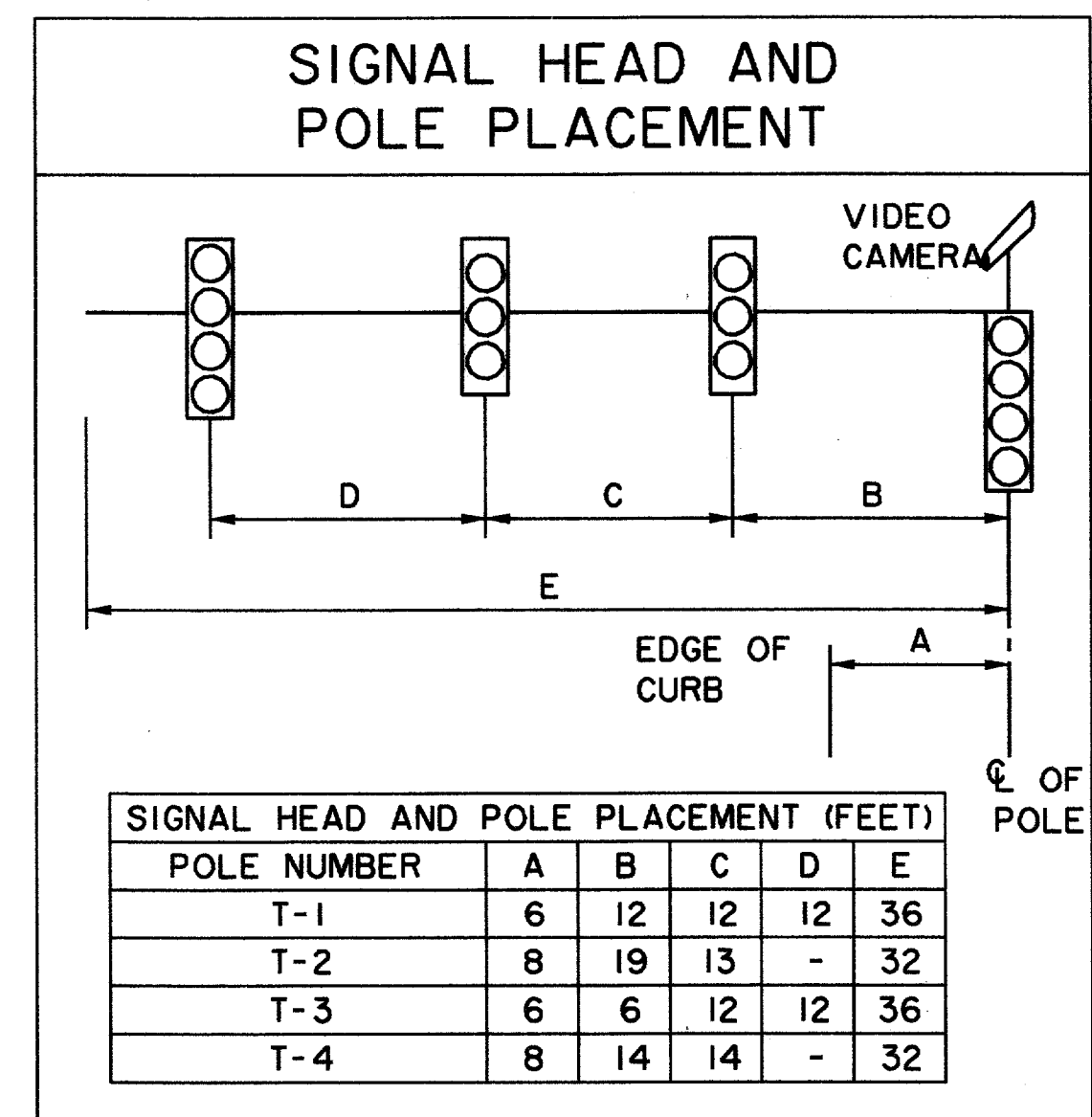
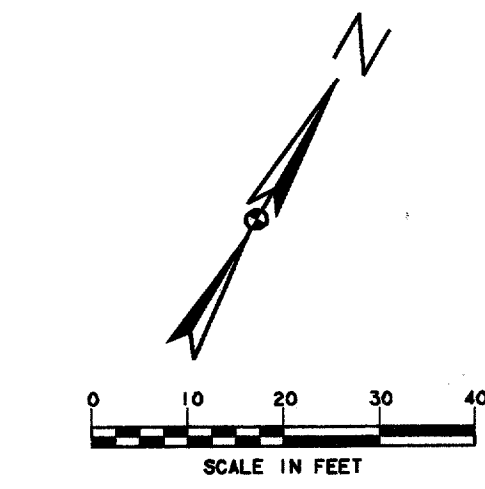


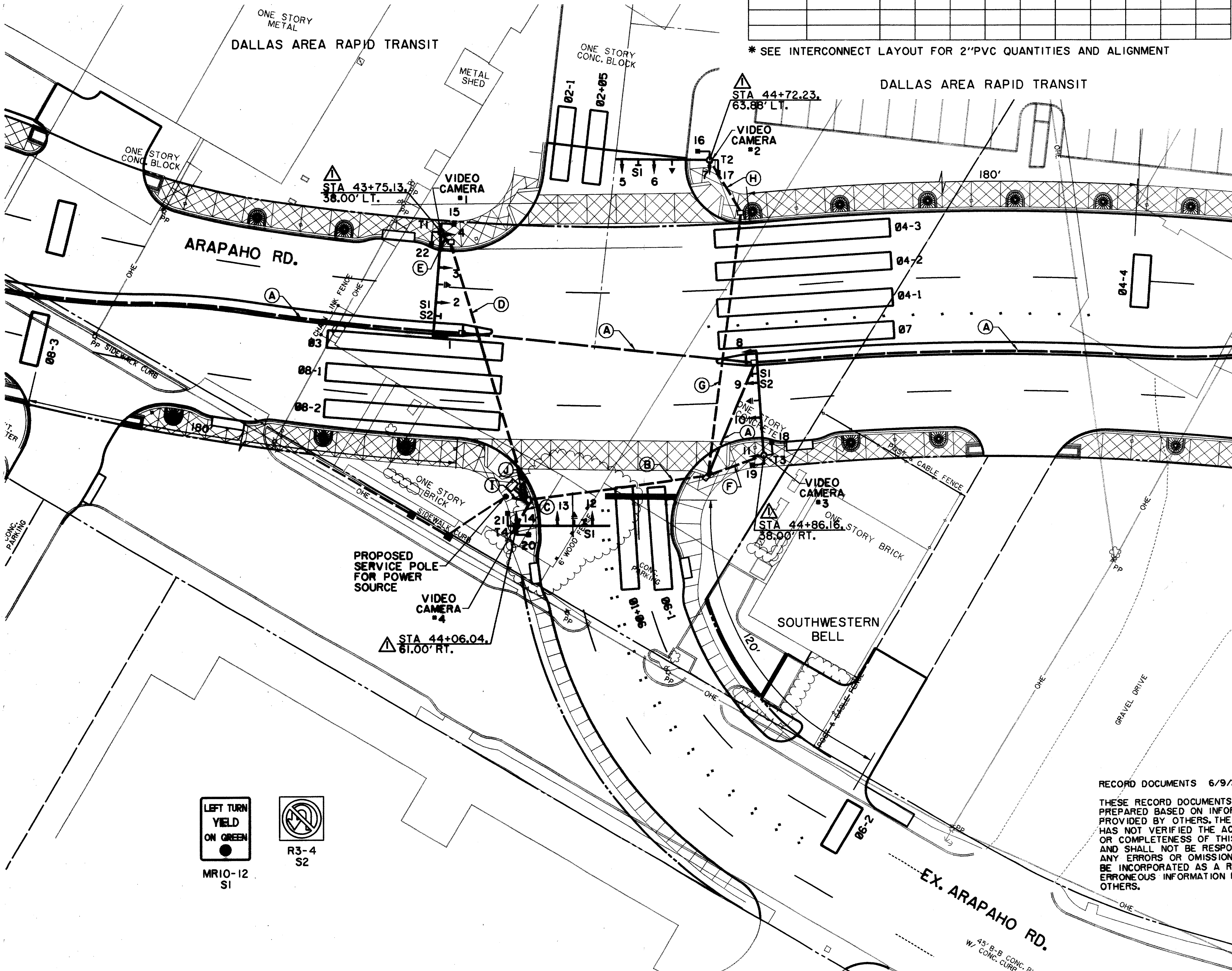
CABLE CONDUCTOR	T-1		T-2		T-3		T-4	
	S.H. NO.	INDICATION	S.H. NO.	INDICATION	S.H. NO.	INDICATION	S.H. NO.	INDICATION
WHITE/BLACK	SPARE		SPARE		SPARE		SPARE	
WHITE	COMMON		COMMON		COMMON		COMMON	
RED	1-4	R	5-7	R	8-11	R	12-14	R
ORANGE	1-4	Y	5-7	Y	8-11	Y	12-14	Y
GREEN	1-4	G	5-7	G	8-11	G	12-14	G
BLUE	1	-G	5	-G	8	-G	12	-G
BLACK	1	-Y	5	-Y	8	-Y	12	-Y
BLUE/BLACK	4	G-	7	G-	11	G-	14	G-
BLACK/WHITE	4	Y-	7	Y-	11	Y-	14	Y-
GREEN/BLACK	22	W	16	W	18	W	20	W
GREEN/WHITE	15	W	17	W	19	W	21	W
RED/BLACK	22	DW	16	DW	18	DW	20	DW
RED/WHITE	15	DW	17	DW	19	DW	21	DW
ORANGE/BLACK	PB22	02	PB16	4	PB18	06	PB20	08
BLUE/WHITE	PB15	04	PB17	06	PB19	08	PB21	02
BLACK/RED	P.B. COM		P.B. COM		P.B. COM		P.B. COM	

RUN NO.	SIZE/TYPE CONDUIT	CABLE TYPE						LENGTH OF CONDUIT	FINAL
		2 CNDR. #6 XHHW WIRE POWER	#6 BARE WIRE GROUND	COAX CABLE	4 CNDR. #20 CABLE OPT	16 CNDR. CABLE	3C VIDEO		
*A	2" PVC								
B	4" PVC		68	136	136	136	136	62	
C	3" PVC		30	15	15	15	15	9	
D	3" PVC		98	98	98	98	98	92	
E	3" PVC		10	10	10	10	10	4	
F	3" PVC		52	26	26	26	26	20	
G	3" PVC		96	96	96	96	96	90	
H	3" PVC		30	30	30	30	30	24	
I	2" PVC	20	20					14	
J	2-3" PVC	14	42	56	56	56	56	8	

* SEE INTERCONNECT LAYOUT FOR 2" PVC QUANTITIES AND ALIGNMENT



ITEM	UNIT	QTY.
CONDUIT		
1-3" TRENCH	L.F.	255
1-2" TRENCH	L.F.	14
1-4" TRENCH	L.F.	62
PULL BOX	EA.	4
VIDEO CAMERA	EA.	4
3M OPTICOM DETECTOR	EA.	4
PEDESTRIAN PUSH BUTTON	EA.	8
CABLE WIRE		
7 CONDUCTOR #12	L.F.	285
5 CONDUCTOR #12	L.F.	393
16 CONDUCTOR #12	L.F.	467
3 CONDUCTOR (VIDEO)	L.F.	587
1 CONDUCTOR #6 GROUND	L.F.	446
2 CONDUCTOR #6 POWER	L.F.	34
4 CONDUCTOR OPTICOM	L.F.	638
COAX CABLE	L.F.	587
SIGNS		
MR10-12	EA.	4
R3-4	EA.	2
FOUNDATIONS		
CONTROLLER	EA.	1
TYPE 30-A	EA.	4
POLES:		
SIGNAL PEDESTAL	EA.	-
MAST ARM POLE		
W/ 32' ARM	EA.	2
W/ 36' ARM	EA.	2
SIGNAL HEADS:		
4 SECTION 12" LENS	EA.	8
3 SECTION 12" LENS	EA.	6
2 SECTION PEDESTRIAN	EA.	8
INSTALL TUE SUPPLIED		
PEDESTAL POLE & METER	L.S.	1



NO	TYPE	PHASE	BACKPLATE		12' VEH SEC	PED SIG SEC
			3 SEC	4 SEC		
1	V4LT	07		1	4	
2	V3	04	1		3	
3	V3	04	1		3	
*4	V4RT	04		1	4	
5	V4LT	01+06		1	4	
6	V3	06	1		3	
*7	V4RT	06		1	4	
8	V4LT	03		1	4	
9	V3	08	1		3	
10	V3	08	1		3	
*11	V4RT	08		1	4	
12	V4LT	02+05		1	4	
13	V3	02	1		3	
*14	V4RT	02		1	4	
15,16	PED	04P				2
17,18	PED	06P				2
19,20	PED	08P				2
21,22	PED	02P				2
TOTALS			6	8	50	8

*FIBER OPTIC SIGNAL

- LEGEND**
- PROPOSED PEDESTRIAN SIGNAL
 - H CONDUIT RUN NUMBER
 - 8 SIGNAL HEAD NUMBER
 - ↓ PROPOSED SIGNAL HEAD
 - PROPOSED SIGNAL CONDUIT
 - PROPOSED PULL BOX
 - EXISTING PULL BOX
 - T3 PROPOSED SIGNAL POLE
 - ↑ LEFT TURN ON ARROW SIGN
 - ↑ OPTICOM
 - DETECTION ZONE FOR VIDEO
 - TUE SWITCHGEAR
 - TUE PEDESTAL POLE & METER

- NOTES:**
- ALL CABLE SHALL BE RUN CONTINUOUSLY WITHOUT SPLICES.
 - SEE INTERCONNECT LAYOUT SHEET FOR 2" PVC RUN A ALIGNMENT AND SUMMARY.
 - CONTRACTOR SHALL CONTACT TU ELECTRIC TO COORDINATE DISCONNECT AND RECONNECT OF EXISTING STREET LIGHT CIRCUIT. CONTRACTOR SHALL INSTALL NEW FOUNDATION, CONDUIT AND CONDUCTOR IF NECESSARY TO RELOCATE SERVICE POLE.
 - VIDEO CAMERAS SHALL BE MOUNTED ON TOP OF SIGNAL POLE AND AIMED IN THE SAME DIRECTION AS SIGNAL HEADS AND ALIGNED TO DETECT ZONES SHOWN ON THIS SHEET.
 - STREET NAME SIGNS WILL BE INSTALLED BY THE TOWN OF ADDISON.
 - TUE WILL PROVIDE PEDESTAL & METER FOR CONTRACTOR TO INSTALL.

RECORD DOCUMENTS 6/9/2000
 THESE RECORD DOCUMENTS HAVE BEEN PREPARED BASED ON INFORMATION PROVIDED BY OTHERS. THE CONSULTANT HAS NOT VERIFIED THE ACCURACY AND/OR COMPLETENESS OF THIS INFORMATION AND SHALL NOT BE RESPONSIBLE FOR ANY ERRORS OR OMISSIONS THAT MAY BE INCORPORATED AS A RESULT OF ERRONEOUS INFORMATION PROVIDED BY OTHERS.

REVISD 3/16/98

SIGNALIZATION PLAN
 ARAPAHO ROAD & EXISTING ARAPAHO ROAD
ARAPAHO ROAD
 ADDISON ROAD TO DALLAS NORTH TOLLWAY
 TOWN OF ADDISON, TEXAS
 Huitt-Zollars, Inc./Consulting Engineers
 Dallas, Fort Worth, Houston, Phoenix, Tustin

DESIGN	DRAWN	APPR.	SCALE	DATE	PROJECT NO.	NO.
HZI	HZI	DLM	1"=20'	OCT 97	1772-01	S-4

