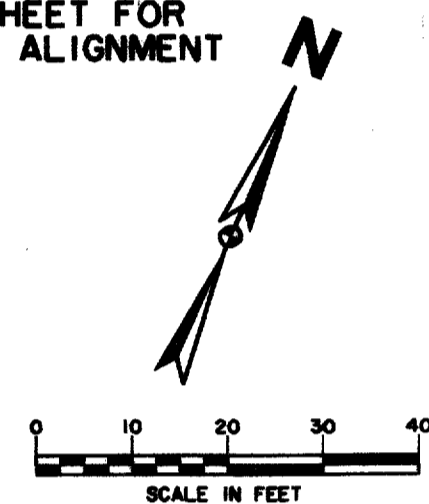


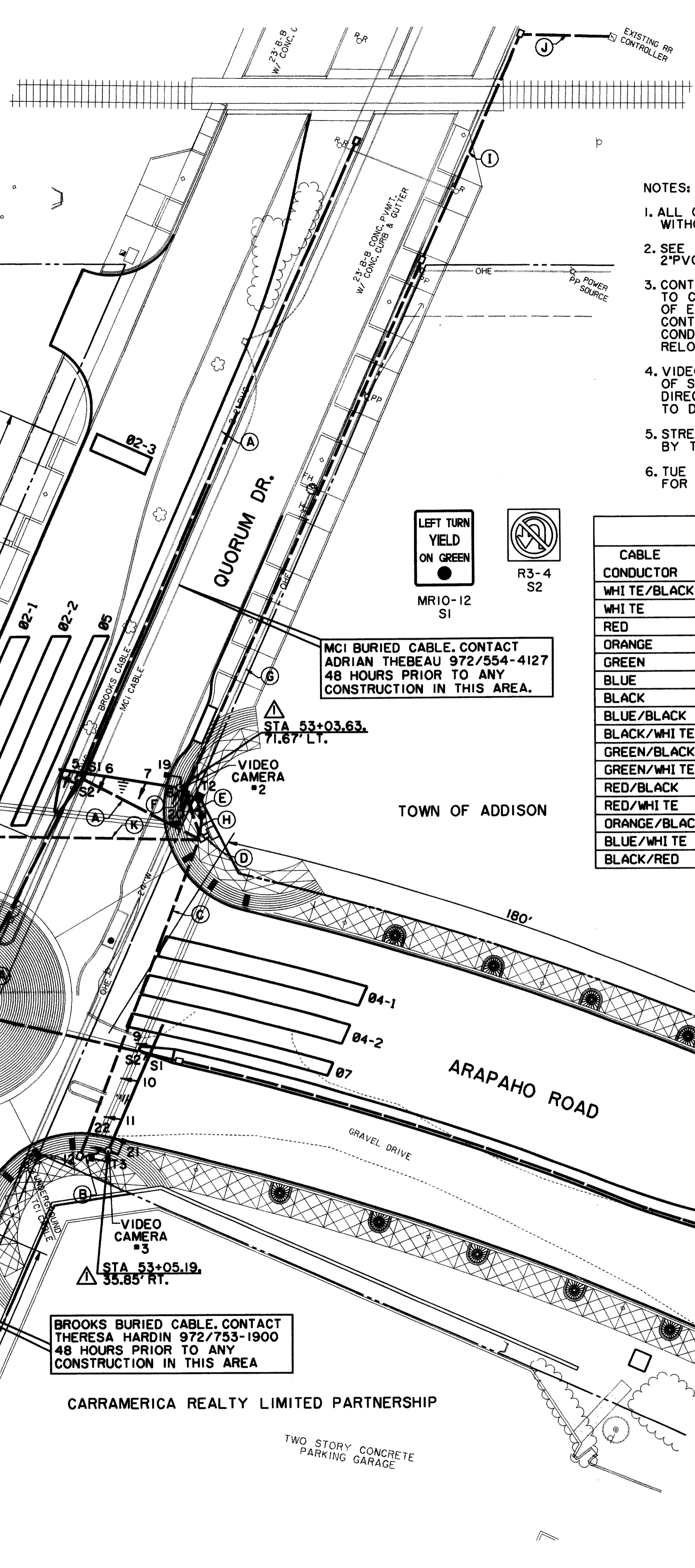
QUANTITIES		
ITEM	UNIT	QTY.
CONDUIT		
1-3" TRENCH	L.F.	269
1-2" TRENCH	L.F.	280
1-4" TRENCH	L.F.	101
PULL BOX	EA.	7
VIDEO CAMERA	EA.	4
3M OPTICOM DETECTOR	EA.	4
PEDESTRIAN PUSH BUTTON		
	EA.	8
CABLE WIRE		
5 CONDUCTOR RR	L.F.	321
7 CONDUCTOR #12	L.F.	307
5 CONDUCTOR #12	L.F.	420
16 CONDUCTOR #12	L.F.	560
COAX CABLE	L.F.	560
1 CONDUCTOR #6 GROUND	L.F.	591
2 CONDUCTOR #6 POWER	L.F.	64
3 CONDUCTOR VIDEO	L.F.	680
4 CONDUCTOR OPTICOM	L.F.	630
SIGNS		
MR10-12	EA.	4
R3-4	EA.	4
FOUNDATIONS		
CONTROLLER	EA.	1
TYPE 30-A	EA.	2
TYPE 30-B	EA.	2
POLES:		
SIGNAL PEDESTAL	EA.	-
MAST ARM POLE	EA.	-
W/ 36' ARM	EA.	2
W/ 40' ARM	EA.	2
SIGNAL HEADS:		
4 SECTION 12" LENS	EA.	8
3 SECTION 12" LENS	EA.	8
2 SECTION PEDESTRIAN	EA.	8
MISCELLANEOUS:		
CONNECT TO RAILROAD GATE CONTROLLER	L.S.	1
INSTALL TUE PEDESTAL & METER	L.S.	1

CONDUIT RUNS										
RUN NO.	SIZE/TYPE CONDUIT	CABLE TYPE							LENGTH OF CONDUIT	FINAL
		2 CND #6 XHHW WIRE POWER	#6 BARE WIRE GROUND	COAX CABLE	4 CNDR. #20 CABLE OPT	16 CNDR. CABLE	3 CNDR. VIDEO	5CND RR		
* #A	2" PVC									
B	3" PVC		15	15	15	15	15		9	
C	3" PVC		104	104	104	104	104		98	
D	2-3" PVC	12	36	48	48	48	48	12	6	
E	3" PVC	20	20	20	20	20	20	20	14	
F	3" PVC	20	10	10	10	10			4	
G	2" PVC							176	170	
H	2" PVC	16	16						10	
I	2" PVC	80						80	74	
J	2" PVC	32						32	26	
K	4" PVC	107	214	214	214	214			101	
L	3" PVC	24	12	12	12	12			7	
M	3" PVC	126	126	126	126	126			120	
N	3" PVC	11	11	11	11	11			5	

* INTERCONNECT
 **SEE INTERCONNECT LAYOUT SHEET FOR INTERCONNECT QUANTITY AND ALIGNMENT



DALLAS AREA RAPID TRANSIT

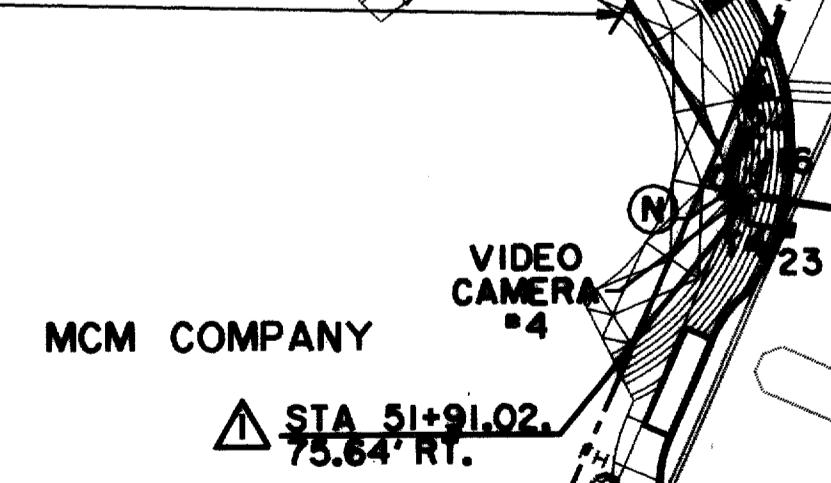
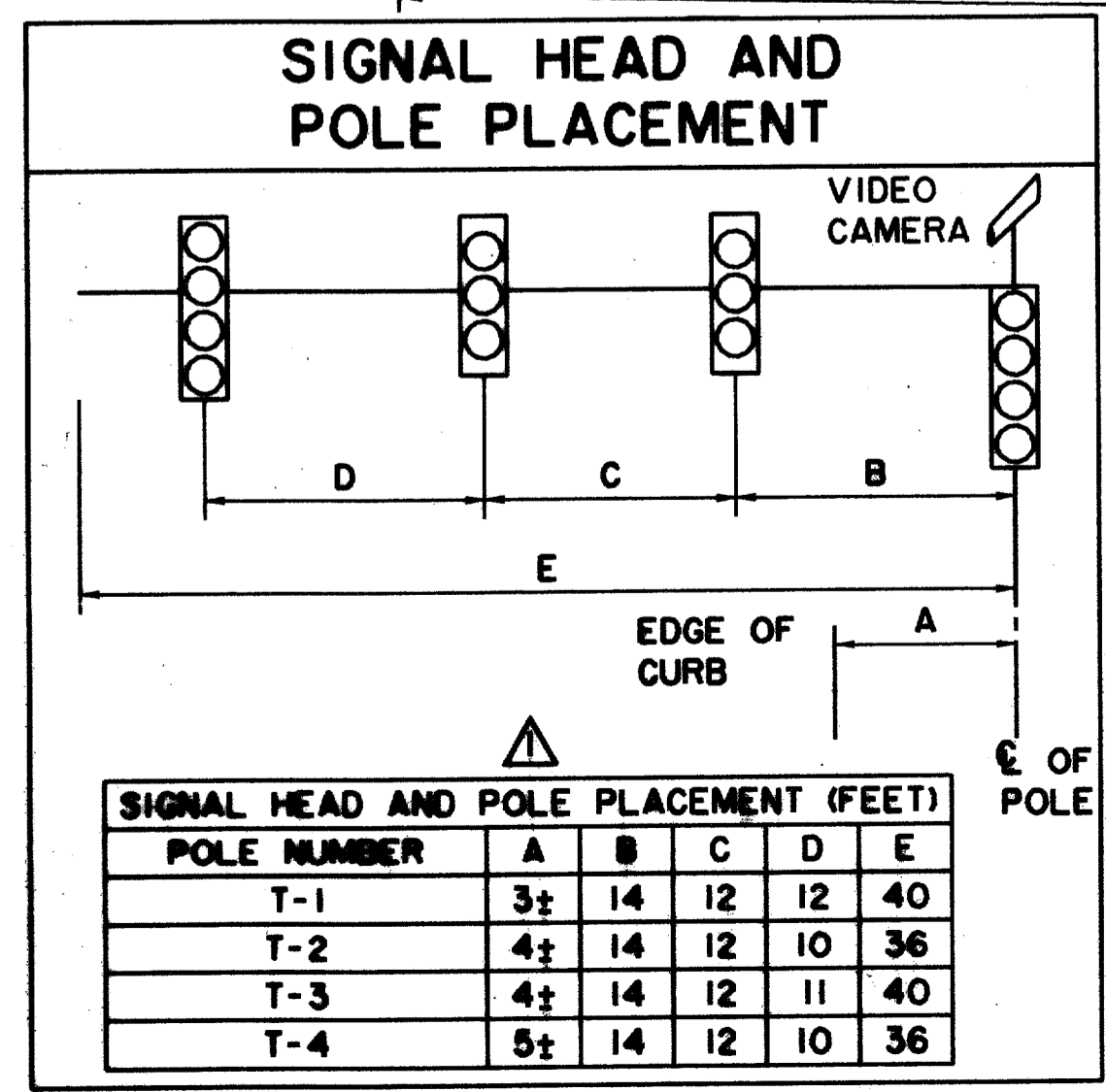


- NOTES:
- ALL CABLE SHALL BE RUN CONTINUOUSLY WITHOUT SPLICES.
 - SEE INTERCONNECT LAYOUT SHEET FOR 2" PVC RUN ALIGNMENT AND SUMMARY.
 - CONTRACTOR SHALL CONTACT TU ELECTRIC TO COORDINATE DISCONNECT AND RECONNECT OF EXISTING STREET LIGHT CIRCUIT. CONTRACTOR SHALL INSTALL NEW FOUNDATION, CONDUIT AND CONDUCTOR IF NECESSARY TO RELOCATE SERVICE POLE.
 - VIDEO CAMERAS SHALL BE MOUNTED ON TOP OF SIGNAL POLE AND AIMED IN THE SAME DIRECTION AS SIGNAL HEADS AND ALIGNED TO DETECT ZONES SHOWN ON THIS SHEET.
 - STREET NAME SIGNS WILL BE INSTALLED BY THE TOWN OF ADDISON.
 - TUE WILL PROVIDE PEDESTAL & METER FOR CONTRACTOR TO INSTALL.

SIGNAL HEADS						
NO	TYPE	PHASE	BACKPLATE		12" VEH SEC	PED SIG SEC
			3 SEC	4 SEC		
1	V4LT	07			4	
2	V3	04			3	
3	V3	04			3	
4	V4RT	04			4	
5	V4LT	01			4	
6	V3	06			3	
7	V3	06			3	
8	V4RT	06			4	
9	V4LT	03			4	
10	V3	08			3	
11	V3	08			3	
12	V4RT	08			4	
13	V4LT	05			4	
14	V3	02			3	
15	V3	02			3	
16	V4RT	02			4	
17,24	PED	02P				2
18,19	PED	04P				2
20,21	PED	06P				2
22,23	PED	08P				2
TOTALS			8	8	56	8

CABLE TERMINATION CHART								
CABLE CONDUCTOR	T-1		T-2		T-3		T-4	
	S. H. NO.	INDICATION	S. H. NO.	INDICATION	S. H. NO.	INDICATION	S. H. NO.	INDICATION
WHITE/BLACK	SPARE		SPARE		SPARE		SPARE	
WHITE	COMMON		COMMON		COMMON		COMMON	
RED	1-4	R	5-8	R	9-12	R	13-16	R
ORANGE	1-4	Y	5-8	Y	9-12	Y	13-16	Y
GREEN	1-4	G	5-8	G	9-12	G	13-16	G
BLUE	1	-G	5	-G	9	-G	3	-G
BLACK	1	-Y	5	-Y	9	-Y	3	-Y
BLUE/BLACK	4	G-	8	G-	12	G-	16	G-
BLACK/WHITE	4	Y-	8	Y-	12	Y-	16	Y-
GREEN/BLACK	17	W	19	W	21	W	23	W
GREEN/WHITE	18	W	20	W	22	W	24	W
RED/BLACK	17	DW	19	DW	21	DW	23	DW
RED/WHITE	18	DW	20	DW	22	DW	24	DW
ORANGE/BLACK	PB17	02	PB19	04	PB21	06	PB23	08
BLUE/WHITE	PB18	04	PB20	06	PB22	08	PB24	02
BLACK/RED	P. B. COM		P. B. COM		P. B. COM		P. B. COM	

- LEGEND
- PROPOSED PEDESTRIAN SIGNAL
 - H CONDUIT RUN NUMBER
 - 8 SIGNAL HEAD NUMBER
 - PROPOSED SIGNAL HEAD
 - PROPOSED SIGNAL CONDUIT
 - EXISTING SIGNAL CONDUIT
 - FUTURE SIGNAL CONDUIT
 - PROPOSED PULL BOX
 - EXISTING PULL BOX
 - PROPOSED SIGNAL POLE
 - LEFT TURN ON ARROW SIGN
 - OPTICOM
 - DETECTION ZONE FOR VIDEO
 - TUE SWITCHGEAR
 - TUE PEDESTAL SOURCE & METER



BROOKS BURIED CABLE. CONTACT THERESA HARDIN 972/753-1900 48 HOURS PRIOR TO ANY CONSTRUCTION IN THIS AREA

TWO STORY CONCRETE PARKING GARAGE

REVISED 3/16/98

THE SEAL APPEARING ON THIS DOCUMENT WAS AUTHORIZED BY DONNA L. MANHART, P.E. 65548 ON OCTOBER 24, 1997

SIGNALIZATION PLAN						
ARAPAHO ROAD & QUORUM DRIVE						
ARAPAHO ROAD						
ADDISON ROAD TO DALLAS NORTH TOLLWAY						
TOWN OF ADDISON, TEXAS						
Huitt-Zollars, Inc./Consulting Engineers Dallas, Fort Worth, Houston, Phoenix, Tustin						
DESIGN	DRAWN	APPR.	SCALE	DATE	PROJECT NO.	NO.
HZ1	HZ1	DLM	1"=20'	OCT 97	1772-01	S-6

RECORD DOCUMENTS 6/9/2000

THESE RECORD DOCUMENTS HAVE BEEN PREPARED BASED ON INFORMATION PROVIDED BY OTHERS. THE CONSULTANT HAS NOT VERIFIED THE ACCURACY AND/OR COMPLETENESS OF THIS INFORMATION AND SHALL NOT BE RESPONSIBLE FOR ANY ERRORS OR OMISSIONS THAT MAY BE INCORPORATED AS A RESULT OF ERRONEOUS INFORMATION PROVIDED BY OTHERS.