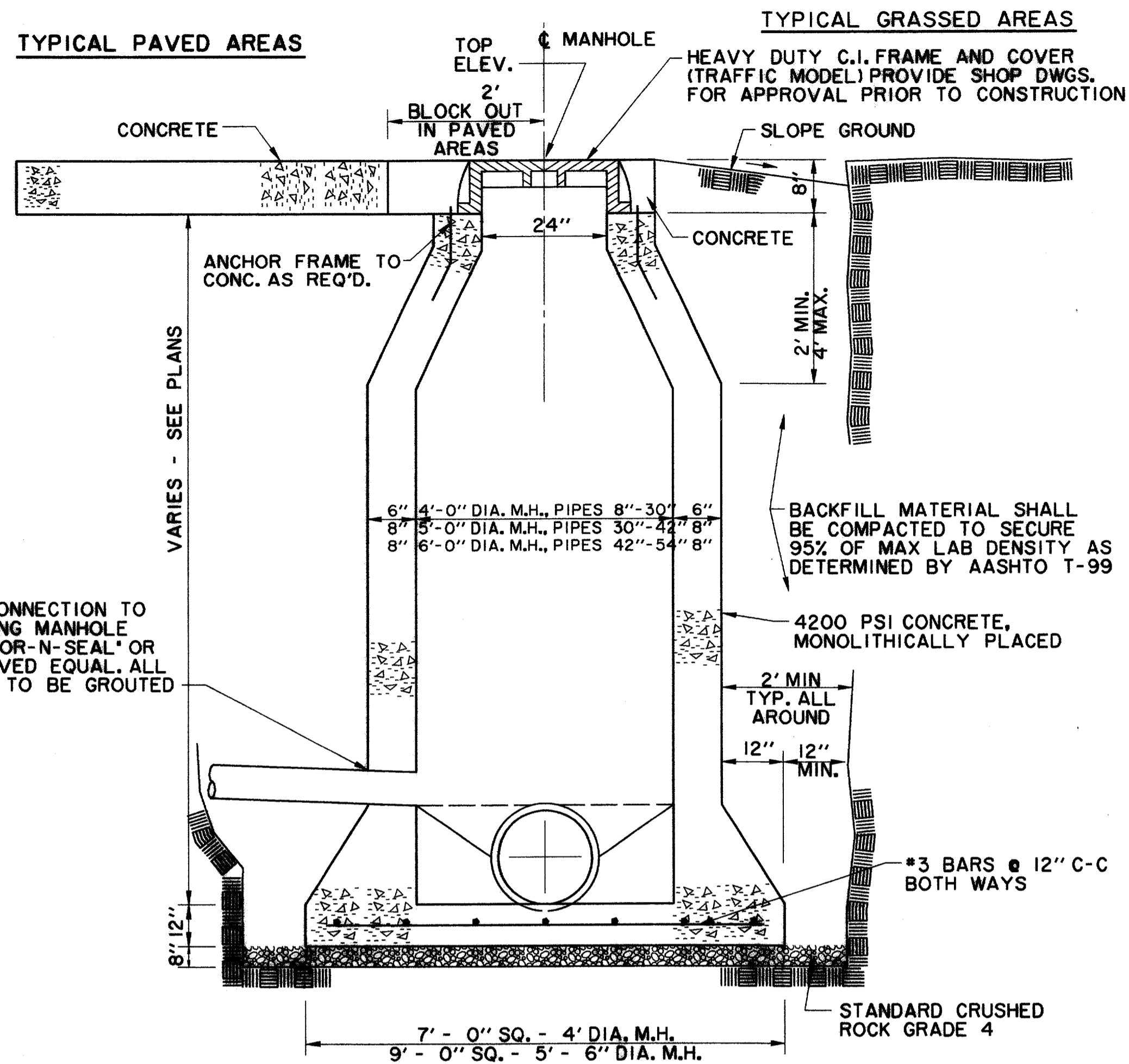
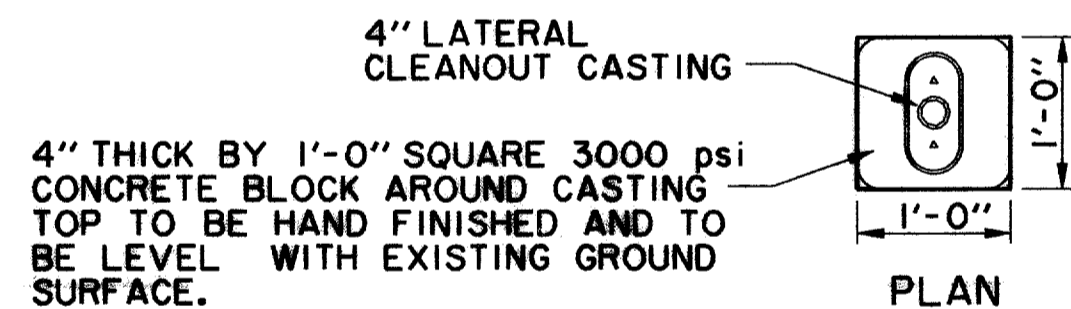


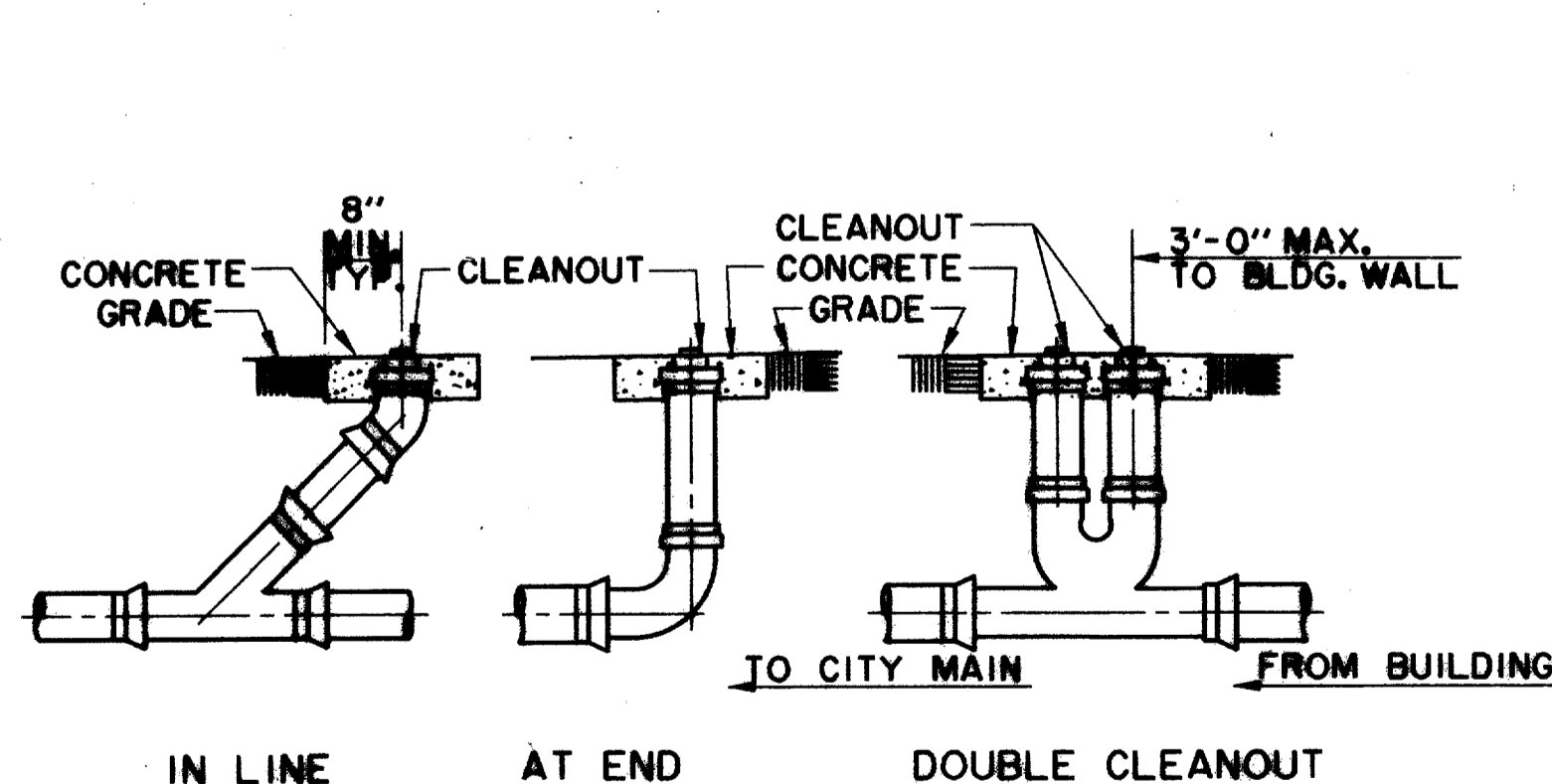
**SANITARY SEWER SERVICE CONNECTION**  
NTS



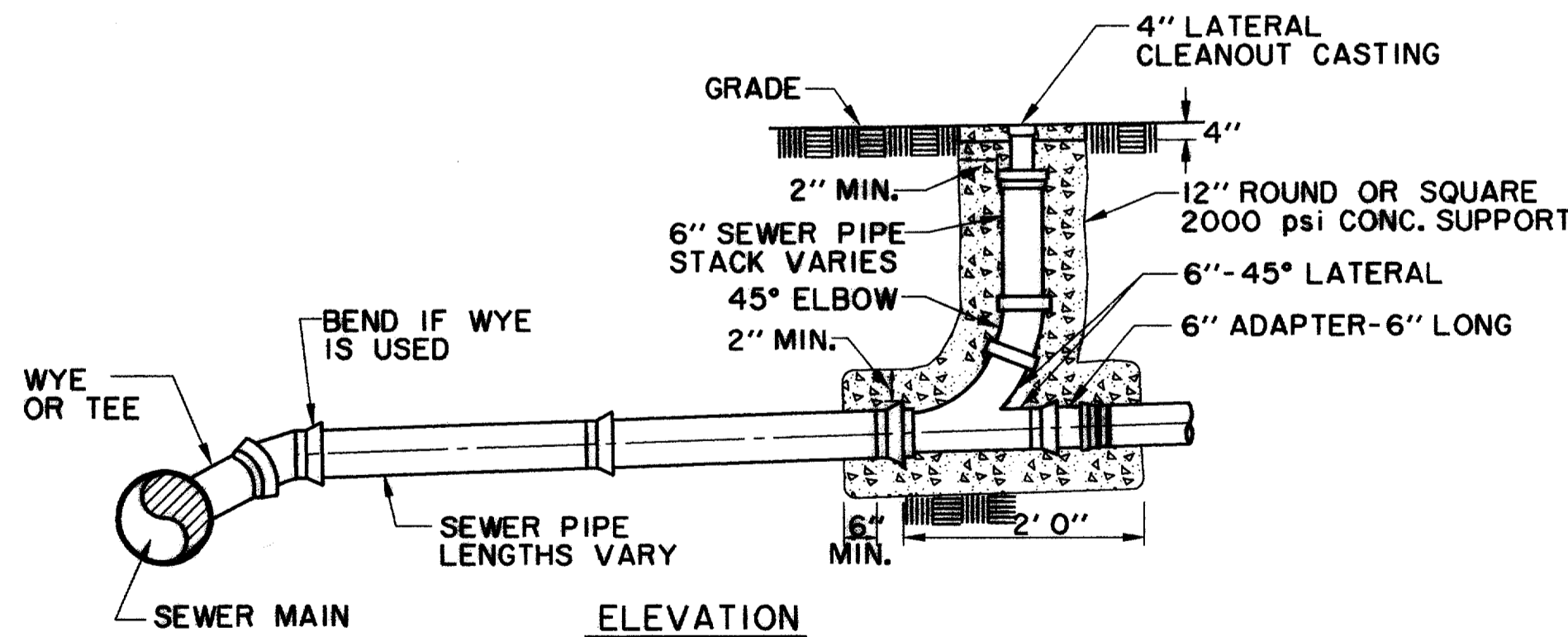
**CAST IN PLACE MANHOLE**  
NOTE:  
KEYWAY WITH P.V.C. WATERSTOP  
REQUIRED AT ALL CONSTRUCTION  
JOINTS



4" THICK BY 1'-0" SQUARE 3000 psi  
CONCRETE BLOCK AROUND CASTING  
TOP TO BE HAND FINISHED AND TO  
BE LEVEL WITH EXISTING GROUND  
SURFACE.



**TYPICAL CLEANOUTS IN NON-PAVED AREAS**



**SANITARY SEWER CLEANOUT DETAIL**  
NTS

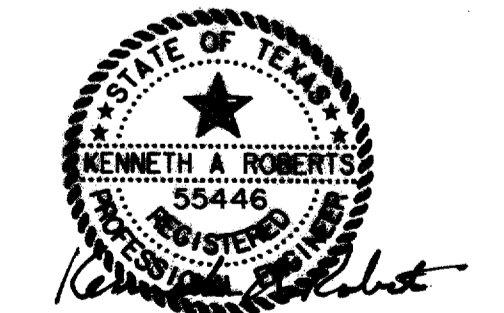
PVC SANITARY SEWER PIPE TO BE SDR 35 OR SDR 26 (AS NOTED ON  
PLANS) WITH INTEGRAL BELL. IT SHALL BE THE RESPONSIBILITY OF THE  
CONTRACTOR TO FIELD LOCATE HORIZONTALLY EACH SERVICE IN RELATION  
TO THE SANITARY SEWER STATIONING.

FIELD TIES ARE TO BE INCLUDED AND RECORDED ON ALUMINIZED  
SANITARY SEWER TAPE. THIS TAPE, GREEN OR RED IN COLOR IS TO BE  
ATTACHED TO THE 6" SERVICE AT THE R.O.W. LINE AND BROUGHT TO  
THE SURFACE TO BE USED AS A PERMANENT MARKER.

RECORD DOCUMENTS 6/9/2000

THESE RECORD DOCUMENTS HAVE BEEN PREPARED BASED ON  
INFORMATION PROVIDED BY OTHERS. THE CONSULTANT HAS  
NOT VERIFIED THE ACCURACY AND/OR COMPLETENESS OF THIS  
INFORMATION AND SHALL NOT BE RESPONSIBLE FOR ANY  
ERRORS OR OMISSIONS THAT MAY BE INCORPORATED AS A  
RESULT OF ERRONEOUS INFORMATION PROVIDED BY OTHERS.

THE SEAL APPEARING ON THIS  
DOCUMENT WAS AUTHORIZED BY  
KENNETH A. ROBERTS, P.E. 55446  
ON OCTOBER 24, 1997



10-24-97

**WASTEWATER DETAILS**

**ARAPAHO ROAD**

ADDISON ROAD TO DALLAS NORTH TOLLWAY

TOWN OF ADDISON, TEXAS

Huitt-Zollars, Inc./Consulting Engineers  
Dallas, Fort Worth, Houston, Phoenix, Tustin

DESIGN	DRAWN	APPR.	SCALE	DATE	PROJECT NO.	NO.
HZI	HZI	KAR	N.T.S.	OCT 97	1772-01	W-10