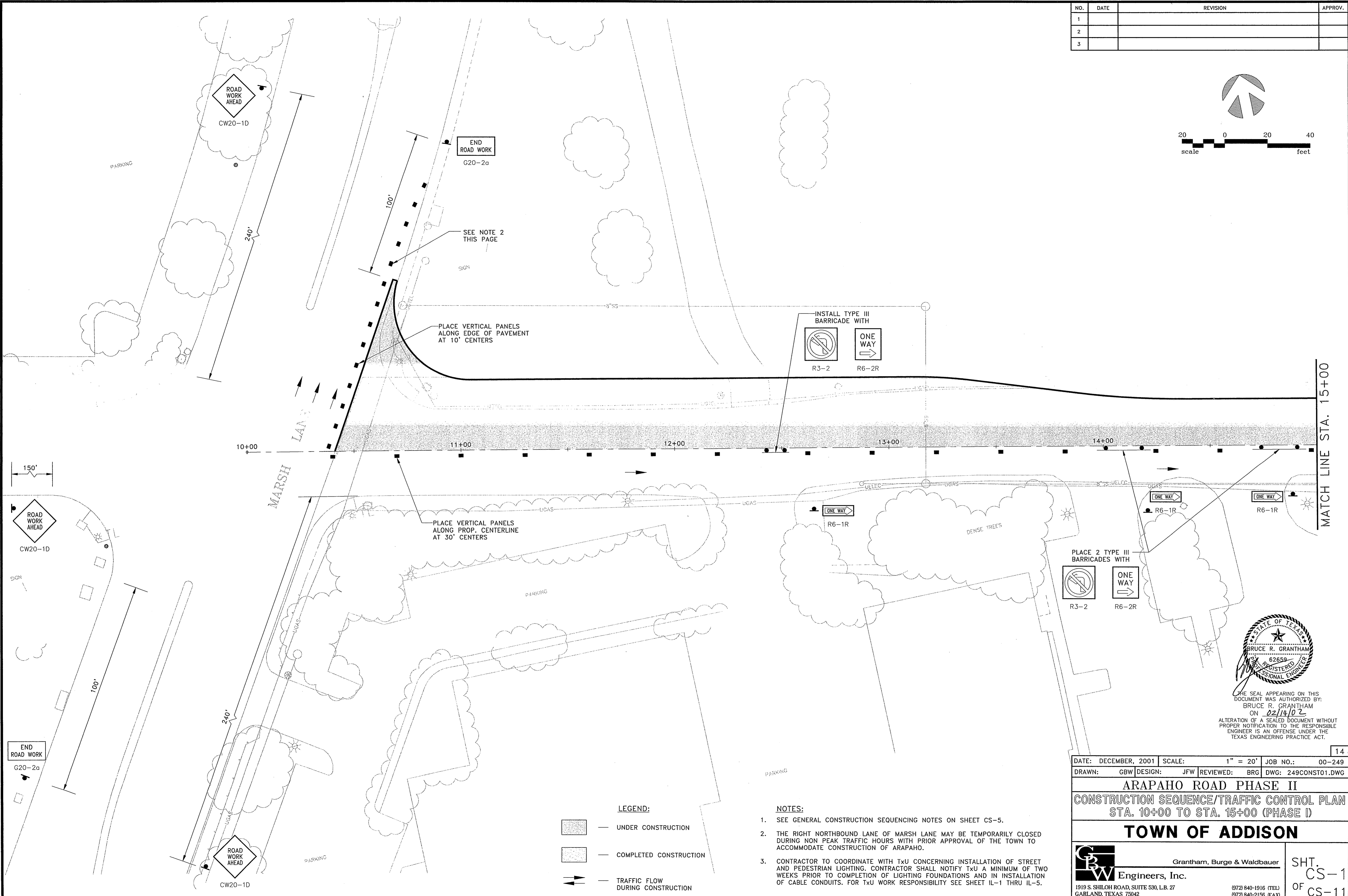
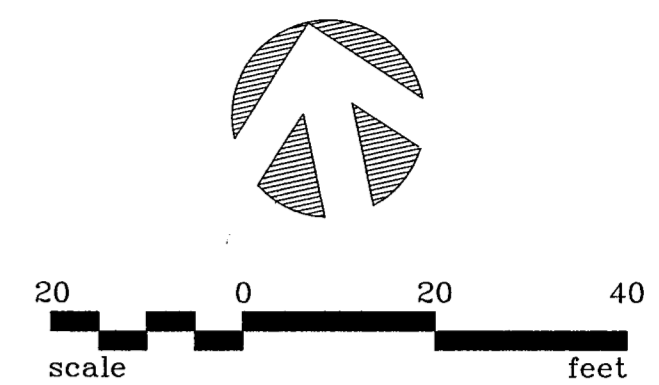


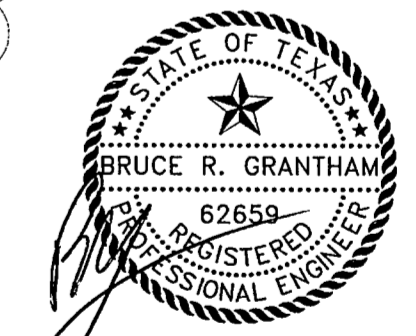
NO.	DATE	REVISION	APPROV.
1			
2			
3			



MATCH LINE STA. 15+00

- LEGEND:**
- UNDER CONSTRUCTION
 - COMPLETED CONSTRUCTION
 - TRAFFIC FLOW DURING CONSTRUCTION

- NOTES:**
- SEE GENERAL CONSTRUCTION SEQUENCING NOTES ON SHEET CS-5.
 - THE RIGHT NORTHBOUND LANE OF MARSH LANE MAY BE TEMPORARILY CLOSED DURING NON PEAK TRAFFIC HOURS WITH PRIOR APPROVAL OF THE TOWN TO ACCOMMODATE CONSTRUCTION OF ARAPAHO.
 - CONTRACTOR TO COORDINATE WITH TxU CONCERNING INSTALLATION OF STREET AND PEDESTRIAN LIGHTING. CONTRACTOR SHALL NOTIFY TxU A MINIMUM OF TWO WEEKS PRIOR TO COMPLETION OF LIGHTING FOUNDATIONS AND IN INSTALLATION OF CABLE CONDUITS. FOR TxU WORK RESPONSIBILITY SEE SHEET IL-1 THRU IL-5.



THE SEAL APPEARING ON THIS DOCUMENT WAS AUTHORIZED BY:
 BRUCE R. GRANTHAM
 ON 02/14/02
 ALTERATION OF A SEALED DOCUMENT WITHOUT PROPER NOTIFICATION TO THE RESPONSIBLE ENGINEER IS AN OFFENSE UNDER THE TEXAS ENGINEERING PRACTICE ACT.

DATE: DECEMBER, 2001	SCALE: 1" = 20'	JOB NO.: 00-249
DRAWN: GBW	DESIGN: JFW	REVIEWED: BRG
DWG: 249CONST01.DWG		

ARAPAHO ROAD PHASE II
 CONSTRUCTION SEQUENCE/TRAFFIC CONTROL PLAN
 STA. 10+00 TO STA. 15+00 (PHASE I)

TOWN OF ADDISON

	Grantham, Burge & Waldbauer Engineers, Inc.	SHT. CS-1 OF CS-11
	1919 S. SHILOH ROAD, SUITE 530, L.B. 27 GARLAND, TEXAS 75042 (972) 840-1916 (TEL) (972) 840-2156 (FAX)	