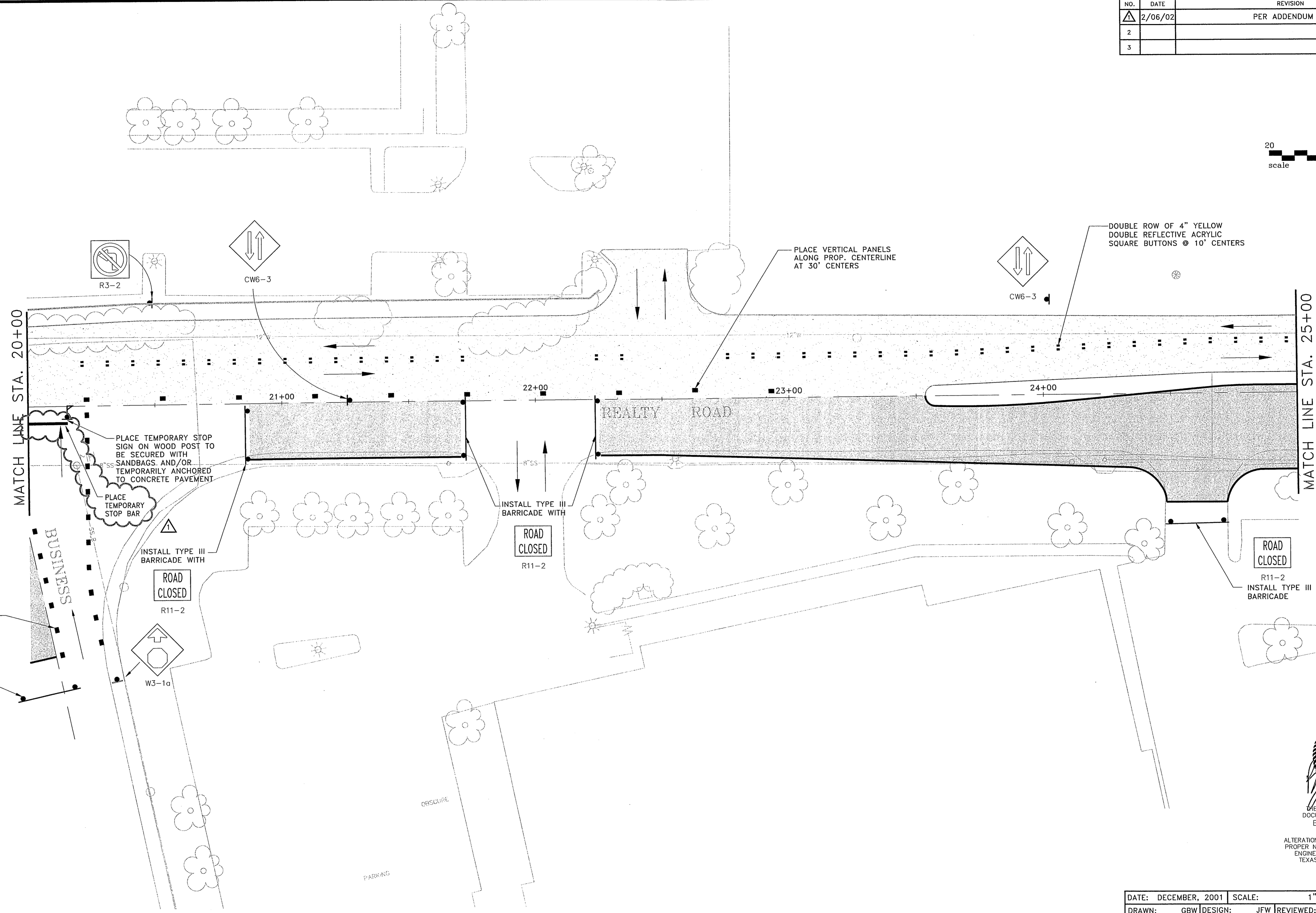
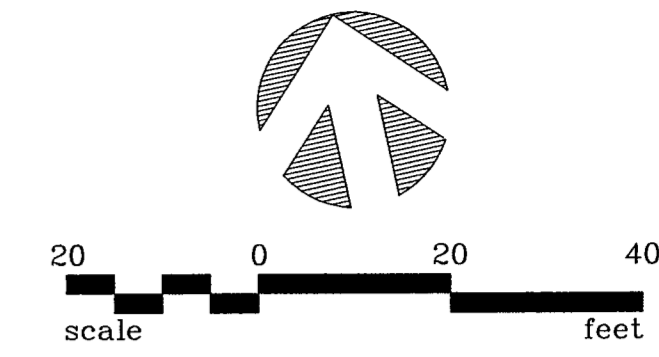


NO.	DATE	REVISION	APPROV.
1	2/06/02	PER ADDENDUM No.2	BRG
2			
3			



THE SEAL APPEARING ON THIS DOCUMENT WAS AUTHORIZED BY: BRUCE R. GRANTHAM ON 02/14/02 ALTERATION OF A SEALED DOCUMENT WITHOUT PROPER NOTIFICATION TO THE RESPONSIBLE ENGINEER IS AN OFFENSE UNDER THE TEXAS ENGINEERING PRACTICE ACT.

**LEGEND:**

	— UNDER CONSTRUCTION
	— COMPLETED CONSTRUCTION
	— TRAFFIC FLOW DURING CONSTRUCTION

- NOTES:**
- SEE GENERAL CONSTRUCTION SEQUENCING NOTES ON SHEET CS-5.
  - THE RIGHT NORTHBOUND LANE OF MARSH LANE MAY BE TEMPORARILY CLOSED DURING NON PEAK TRAFFIC HOURS WITH PRIOR APPROVAL OF THE TOWN TO ACCOMMODATE CONSTRUCTION OF ARAPAHO.
  - CONTRACTOR TO COORDINATE WITH TxU CONCERNING INSTALLATION OF STREET AND PEDESTRIAN LIGHTING. CONTRACTOR SHALL NOTIFY TxU A MINIMUM OF TWO WEEKS PRIOR TO COMPLETION OF LIGHTING FOUNDATIONS AND IN INSTALLATION OF CABLE CONDUITS. FOR TxU WORK RESPONSIBILITY SEE SHEET IL-1 THRU IL-5.

DATE: DECEMBER, 2001	SCALE: 1" = 20'	JOB NO.: 00-249
DRAWN: GBW	DESIGN: JFW	REVIEWED: BRG
DWG: 249CONST08.DWG		

**ARAPAHO ROAD PHASE II**  
**CONSTRUCTION SEQUENCE/TRAFFIC CONTROL PLAN**  
**STA. 20+00 TO STA. 25+00 (PHASE II)**

**TOWN OF ADDISON**

	<b>Granham, Burge &amp; Waldbauer</b> <b>Engineers, Inc.</b>	SHT. <b>CS-8</b> OF <b>CS-11</b>
	1919 S. SHILOH ROAD, SUITE 530, L.B. 27 GARLAND, TEXAS 75042	