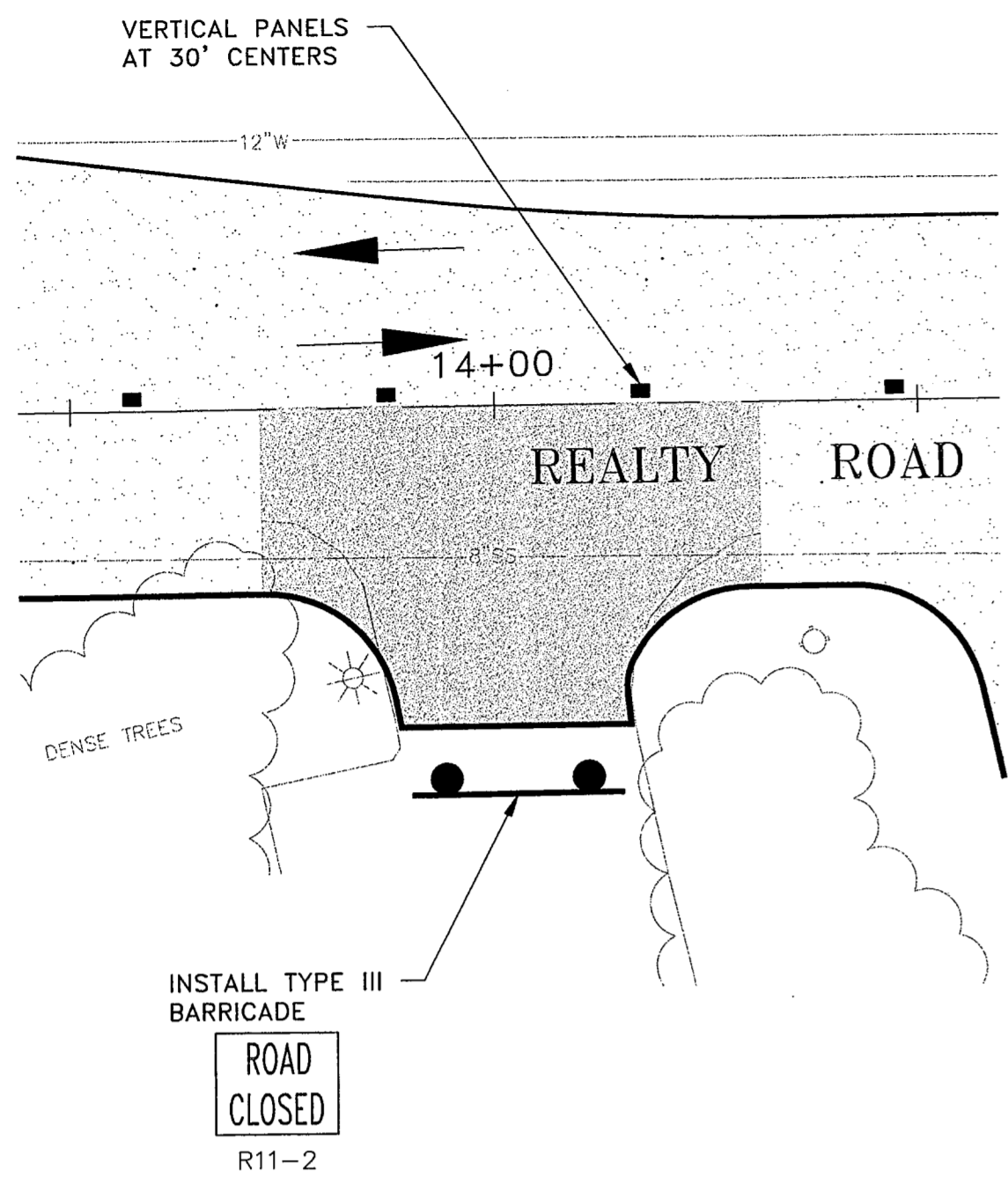
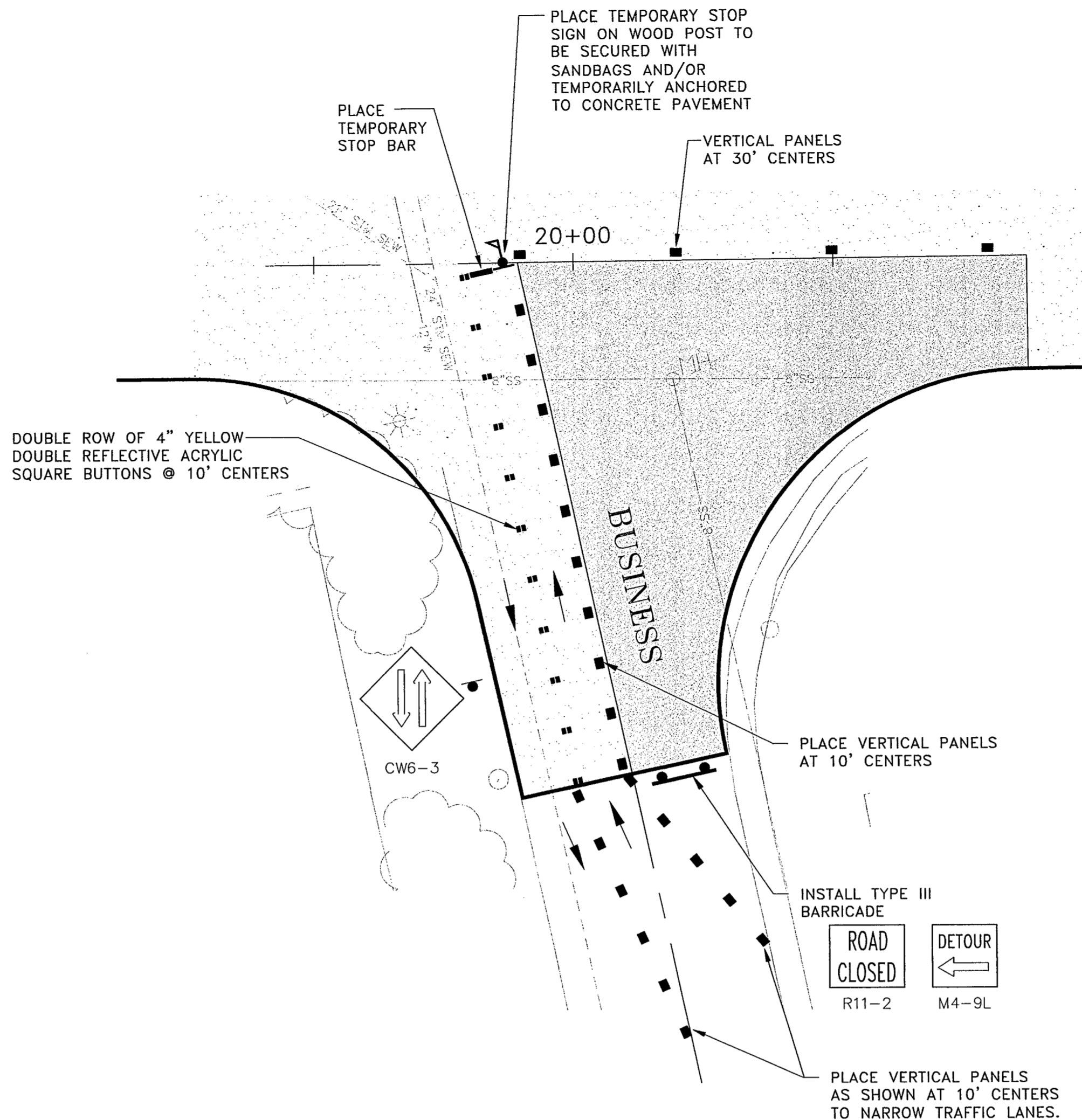


| NO. | DATE | REVISION | APPROV. |
|-----|------|----------|---------|
| 1   |      |          |         |
| 2   |      |          |         |
| 3   |      |          |         |



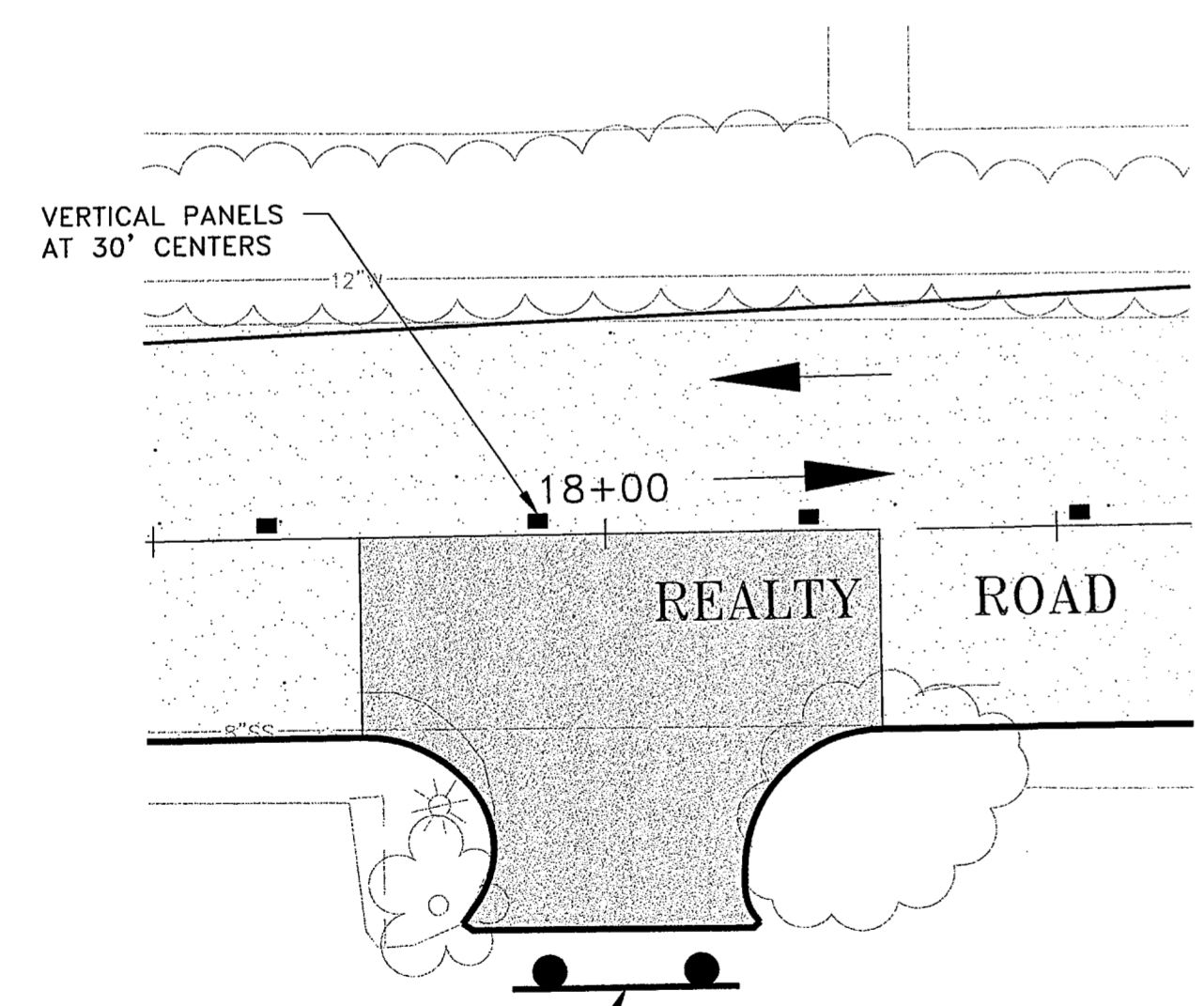
PHASE 2-A  
DRIVEWAY AT STA. 14+01.44  
NOT TO SCALE

INSTALL TYPE III BARRICADE  
ROAD CLOSED  
R11-2



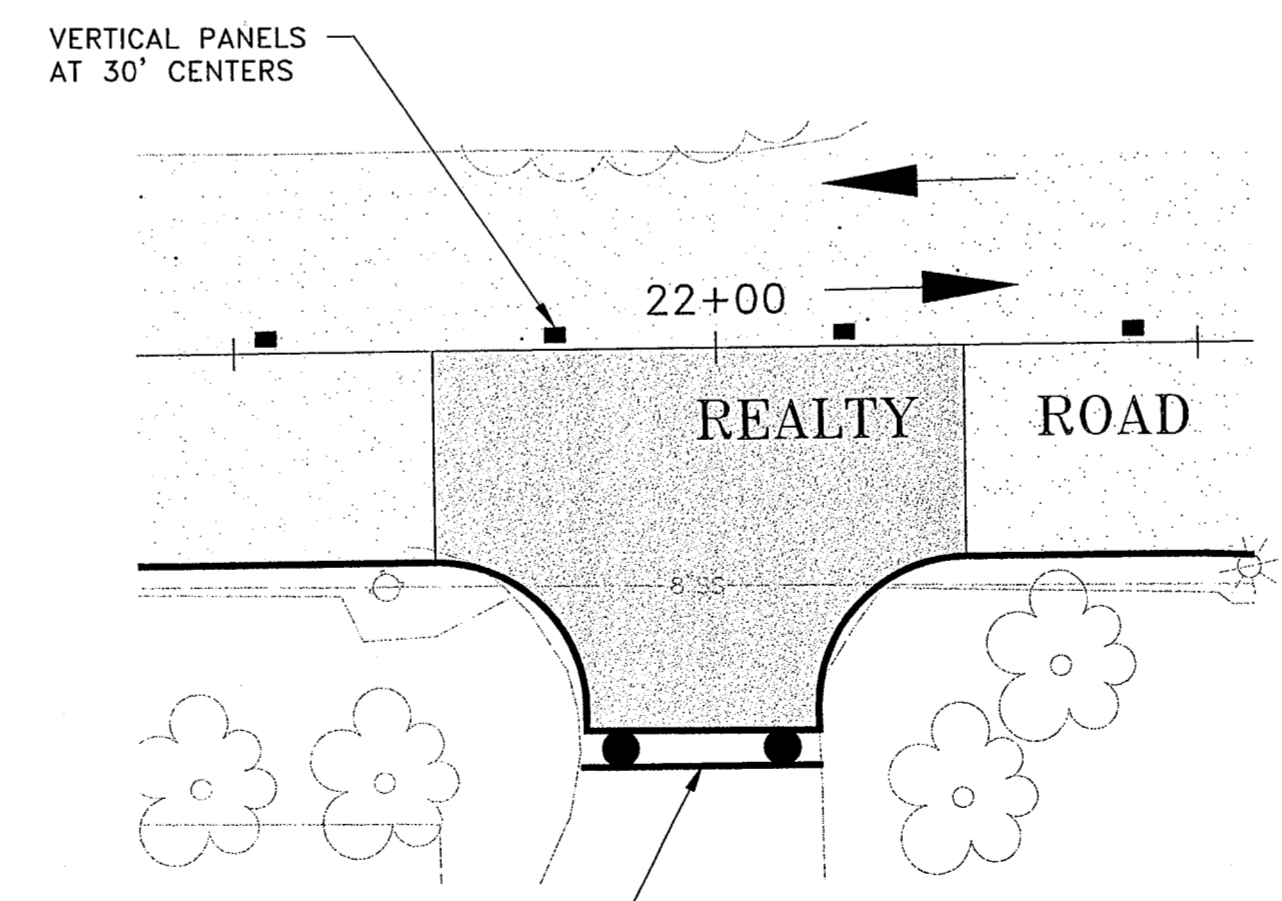
PHASE 2-A  
BUSINESS AVENUE  
NOT TO SCALE

INSTALL TYPE III BARRICADE  
ROAD CLOSED  
R11-2  
DETOUR  
M4-9L



PHASE 2-A  
DRIVEWAY AT STA. 17+99.96  
NOT TO SCALE

INSTALL TYPE III BARRICADE  
ROAD CLOSED  
R11-2

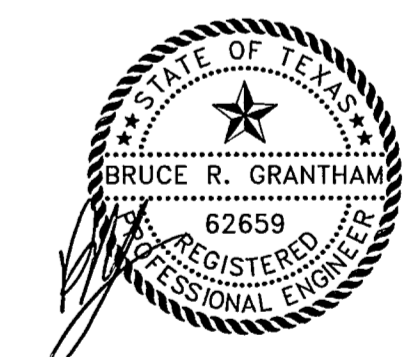


PHASE 2-A  
DRIVEWAY AT STA. 21+98.12  
NOT TO SCALE

INSTALL TYPE III BARRICADE  
ROAD CLOSED  
R11-2

- LEGEND:**
- UNDER CONSTRUCTION
  - COMPLETED CONSTRUCTION
  - TRAFFIC FLOW DURING CONSTRUCTION

- NOTES:**
- SEE GENERAL CONSTRUCTION SEQUENCING NOTES ON SHEET CS-5.
  - THE RIGHT NORTHBOUND LANE OF MARSH LANE MAY BE TEMPORARILY CLOSED DURING NON PEAK TRAFFIC HOURS WITH PRIOR APPROVAL OF THE TOWN TO ACCOMMODATE CONSTRUCTION OF ARAPAHO.
  - CONTRACTOR TO COORDINATE WITH TXU CONCERNING INSTALLATION OF STREET AND PEDESTRIAN LIGHTING. CONTRACTOR SHALL NOTIFY TXU A MINIMUM OF TWO WEEKS PRIOR TO COMPLETION OF LIGHTING FOUNDATIONS AND IN INSTALLATION OF CABLE CONDUITS. FOR TXU WORK RESPONSIBILITY SEE SHEET IL-1 THRU IL-5.



THE SEAL APPEARING ON THIS DOCUMENT WAS AUTHORIZED BY:  
BRUCE R. GRANTHAM  
ON 02/14/02  
ALTERATION OF A SEALED DOCUMENT WITHOUT PROPER NOTIFICATION TO THE RESPONSIBLE ENGINEER IS AN OFFENSE UNDER THE TEXAS ENGINEERING PRACTICE ACT.

|                      |                     |                 |
|----------------------|---------------------|-----------------|
| DATE: DECEMBER, 2001 | SCALE: NOT TO SCALE | JOB NO.: 00-249 |
| DRAWN: GBW           | DESIGN: JFW         | REVIEWED: BRG   |
| DWG: 249CONST11.DWG  |                     |                 |

**ARAPAHO ROAD PHASE II  
CONSTRUCTION SEQUENCE/TRAFFIC CONTROL PLAN  
DRIVEWAY DETAILS - PHASE 2A**

**TOWN OF ADDISON**

**GW** Grantham, Burge & Waldbauer  
Engineers, Inc.  
1919 S. SHILOH ROAD, SUITE 530, L.B. 27  
GARLAND, TEXAS 75042

(972) 840-1916 (TEL)  
(972) 840-2155 (FAX)

SHT.  
CS-11  
OF  
CS-11