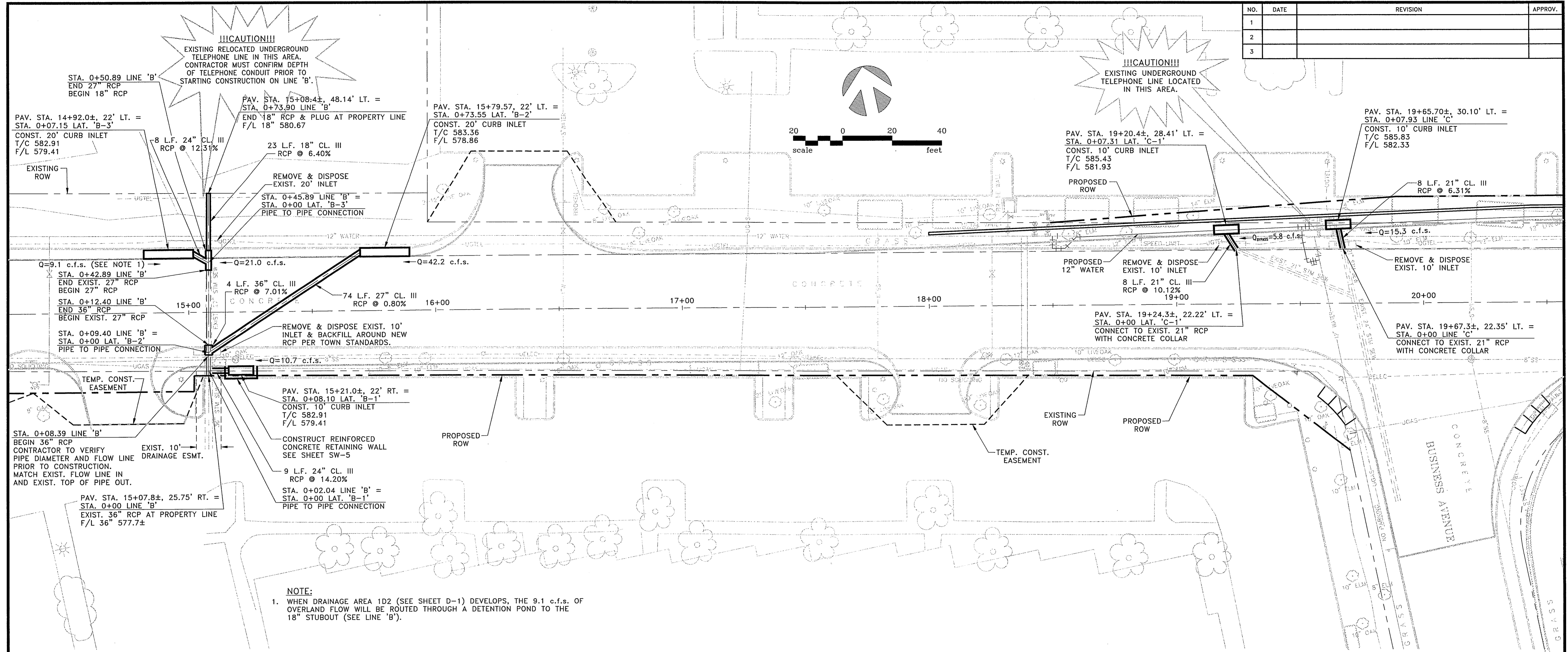


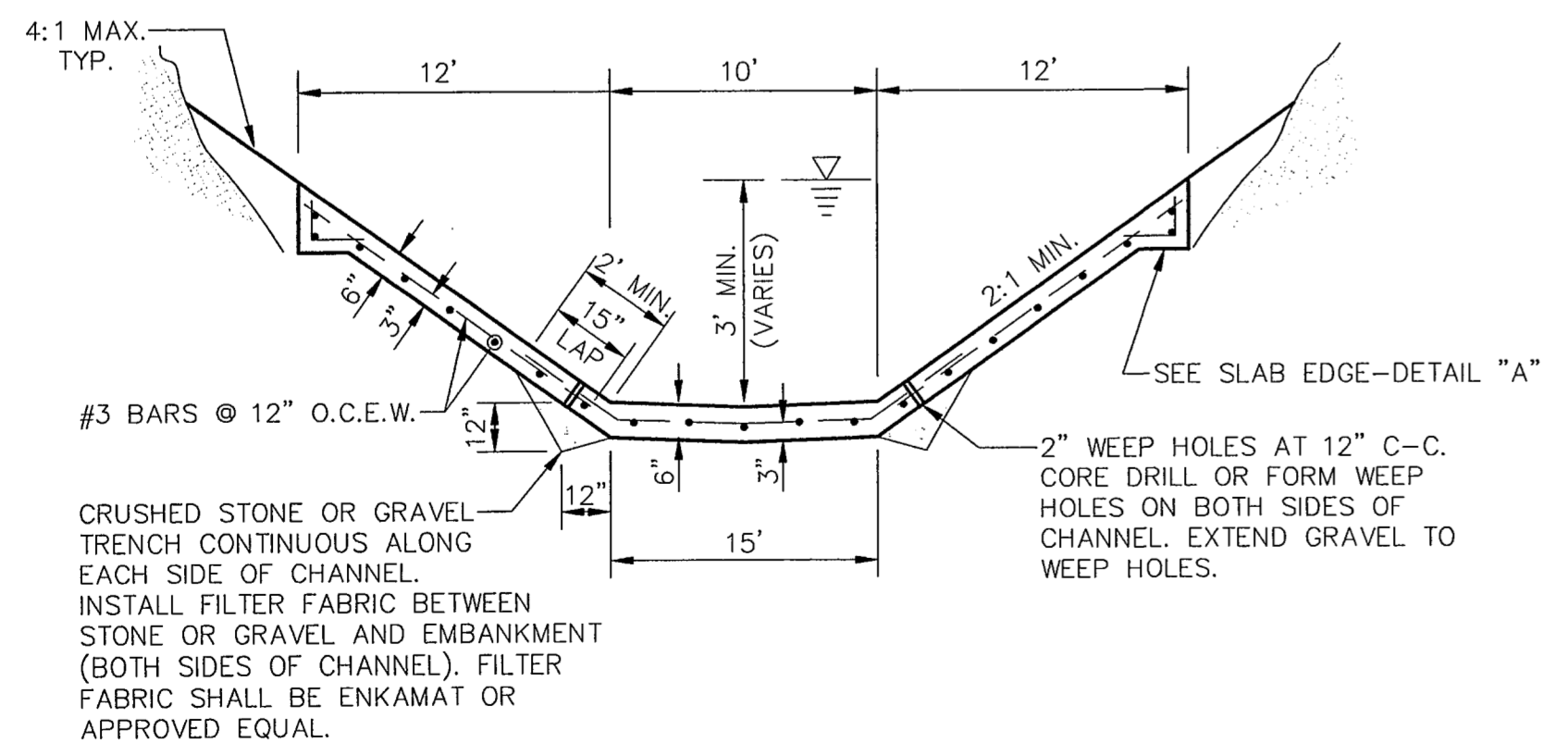
NO.	DATE	REVISION	APPROV.
1			
2			
3			



!!!CAUTION!!!
EXISTING RELOCATED UNDERGROUND TELEPHONE LINE IN THIS AREA. CONTRACTOR MUST CONFIRM DEPTH OF TELEPHONE CONDUIT PRIOR TO STARTING CONSTRUCTION ON LINE 'B'.

!!!CAUTION!!!
EXISTING UNDERGROUND TELEPHONE LINE LOCATED IN THIS AREA.

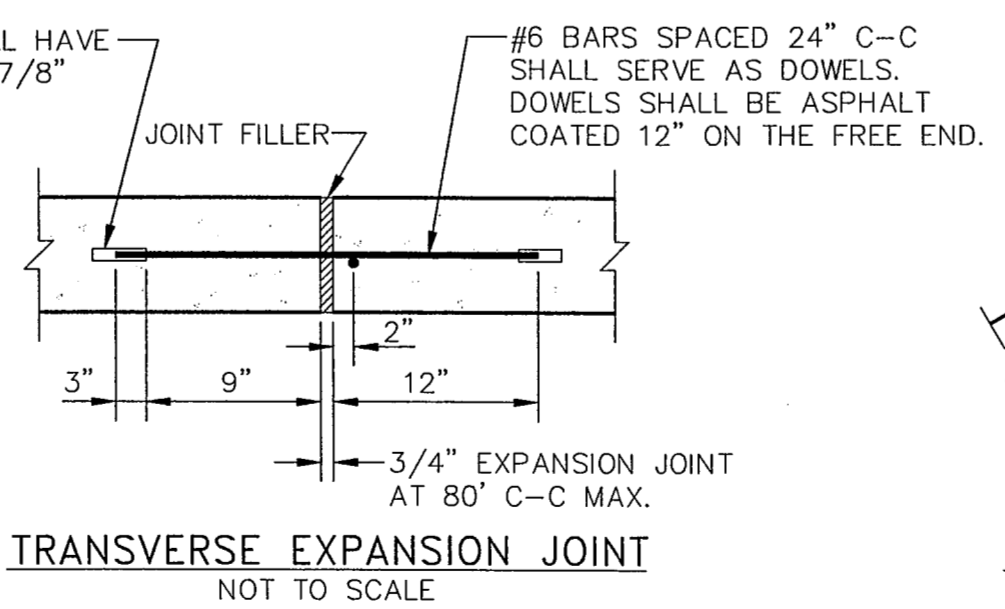
NOTE:
1. WHEN DRAINAGE AREA 1D2 (SEE SHEET D-1) DEVELOPS, THE 9.1 c.f.s. OF OVERLAND FLOW WILL BE ROUTED THROUGH A DETENTION POND TO THE 18" STUBOUT (SEE LINE 'B').



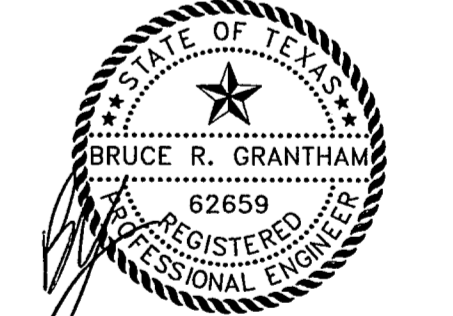
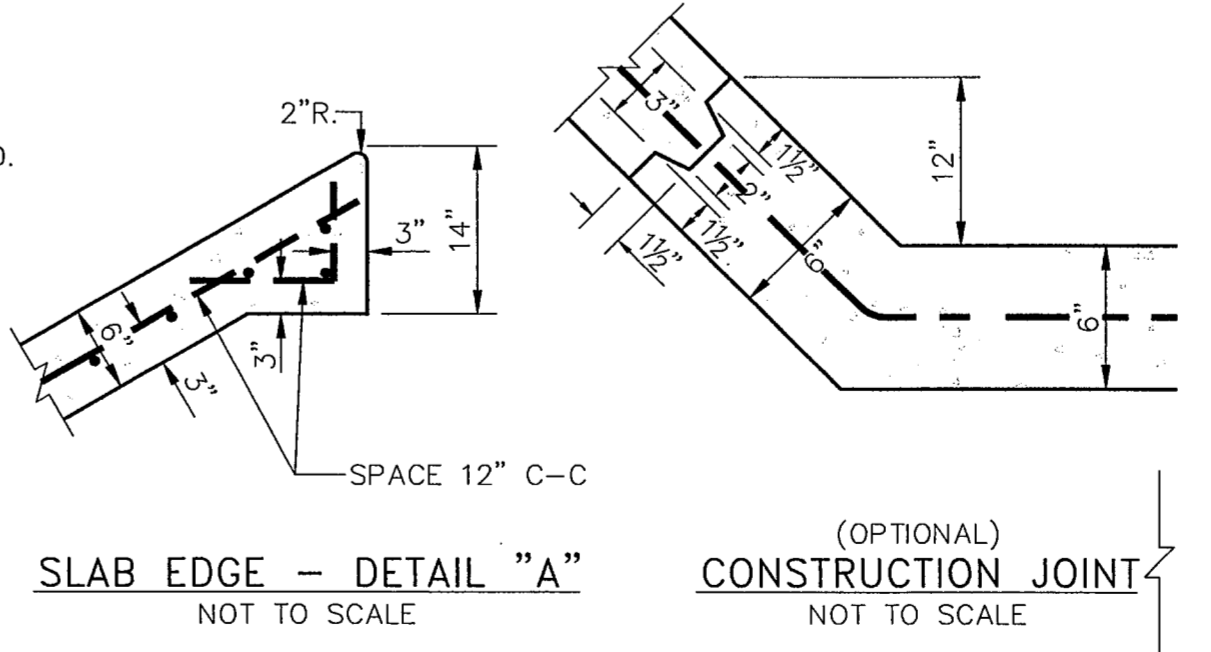
NOTES:

1. PROPOSED CHANNEL LINING SHALL MATCH EXISTING CHANNEL LINING.
2. DOWEL 18" LONG #3 BARS @ 12" CENTERS FROM CHANNEL LINING 9" INTO PARALLEL BOX CULVERT WINGWALLS (SEE SHEETS SW-2 AND SW-8).

SLEEVE FOR DOWEL SHALL HAVE AN INSIDE DIAMETER OF 7/8" AND SHALL BE 5" LONG.



GENERAL UTILITY NOTE
RELOCATION OF ELECTRIC, GAS, TELEPHONE, AND CABLE TELEVISION LINES WILL OCCUR AFTER THESE DRAWINGS ARE COMPLETED. CONTRACTOR MUST OBTAIN NEW LOCATIONS OF ALL UTILITIES PRIOR TO STARTING CONSTRUCTION.



THE SEAL APPEARING ON THIS DOCUMENT WAS AUTHORIZED BY:
BRUCE R. GRANTHAM
ON 02/14/02
ALTERATION OF A SEALED DOCUMENT WITHOUT PROPER NOTIFICATION TO THE RESPONSIBLE ENGINEER IS AN OFFENSE UNDER THE TEXAS ENGINEERING PRACTICE ACT.

DATE: DECEMBER, 2001	SCALE: 1"=20'	JOB NO.: 00-249
DRAWN: GBW	DESIGN: JFW	REVIEWED: BRG
DWG: 249STMPL02.DWG		

ARAPAHO ROAD PHASE II
STORM WATER PLAN -
SHEET 1

TOWN OF ADDISON

GBW Engineers, Inc.
1919 S. SHILOH ROAD, SUITE 530, L.B. 27 GARLAND, TEXAS 75042
GRANTHAM, BURGE & WALDBAUER
(972) 840-1916 (TEL)
(972) 840-2156 (FAX)

SHT. SW-1
OF SW-8