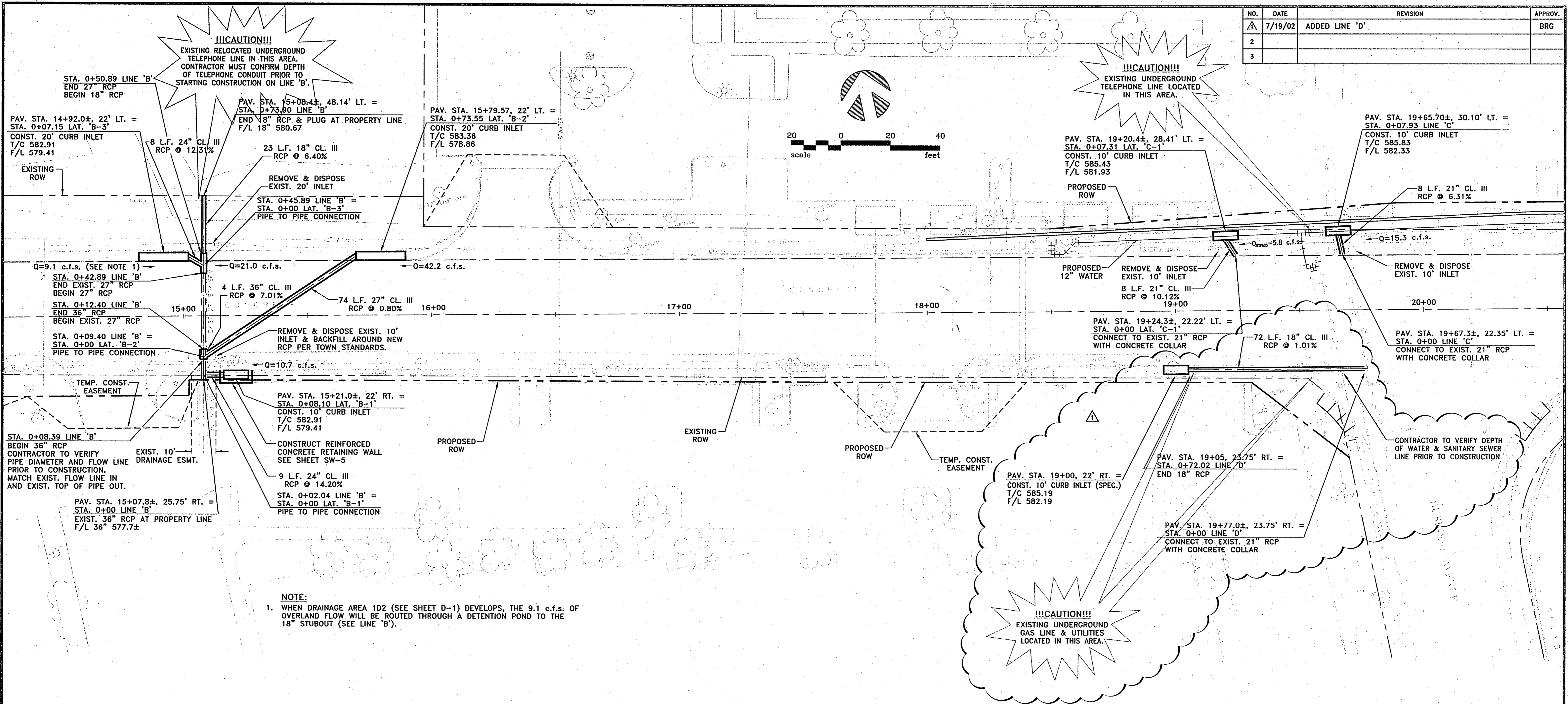
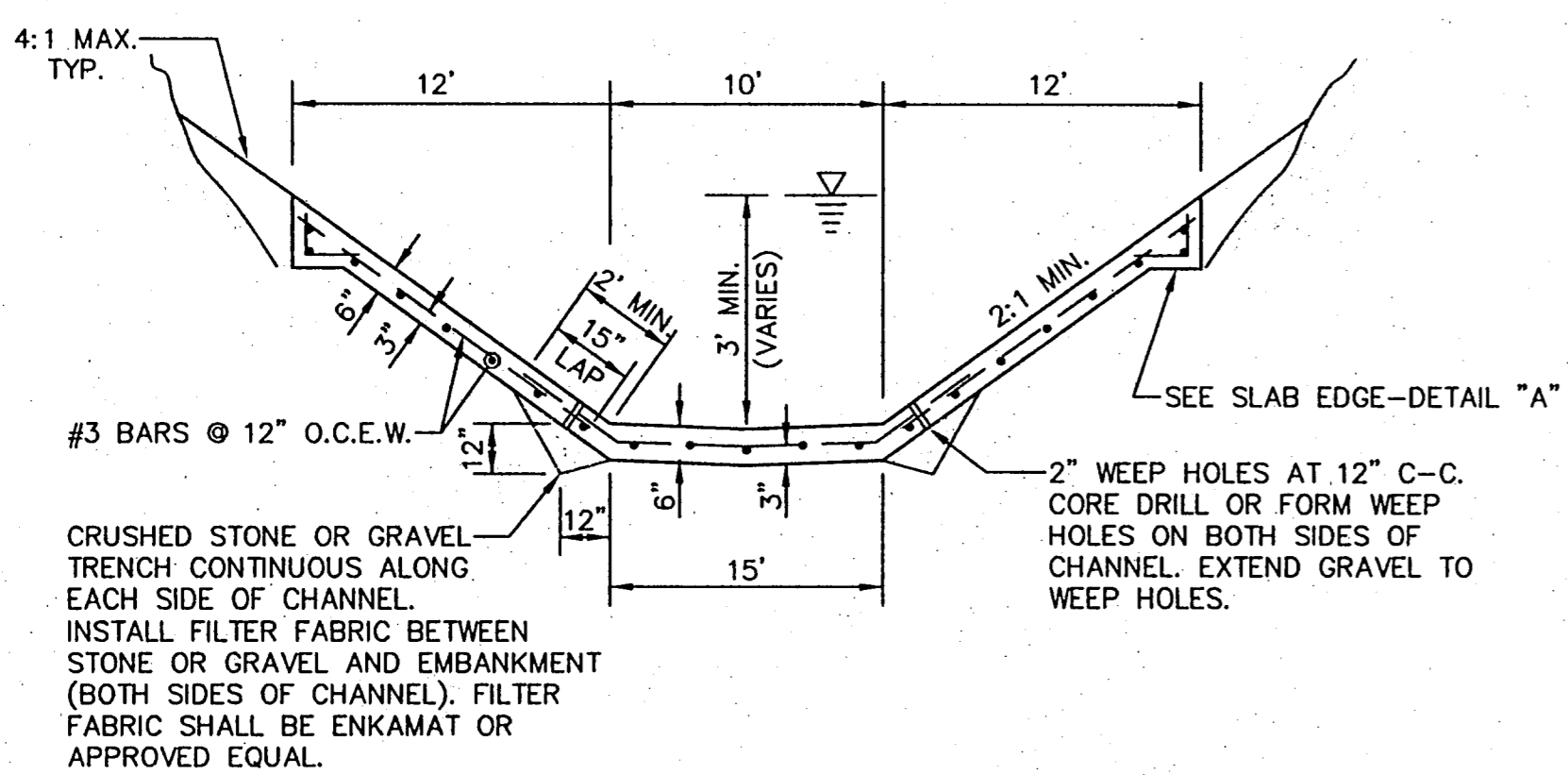


NO.	DATE	REVISION	APPROV.
1	7/19/02	ADDED LINE 'D'	BRG
2			
3			



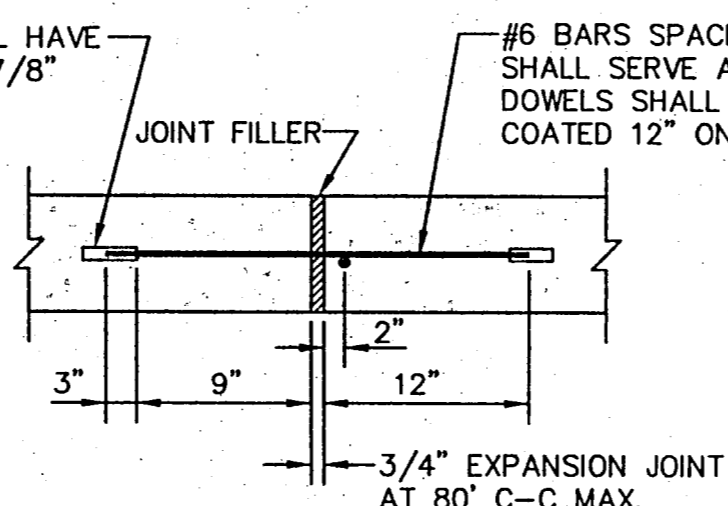
NOTE:
 1. WHEN DRAINAGE AREA 1D2 (SEE SHEET D-1) DEVELOPS, THE 9.1 c.f.s. OF OVERLAND FLOW WILL BE ROUTED THROUGH A DETENTION POND TO THE 18" STUBOUT (SEE LINE 'B').



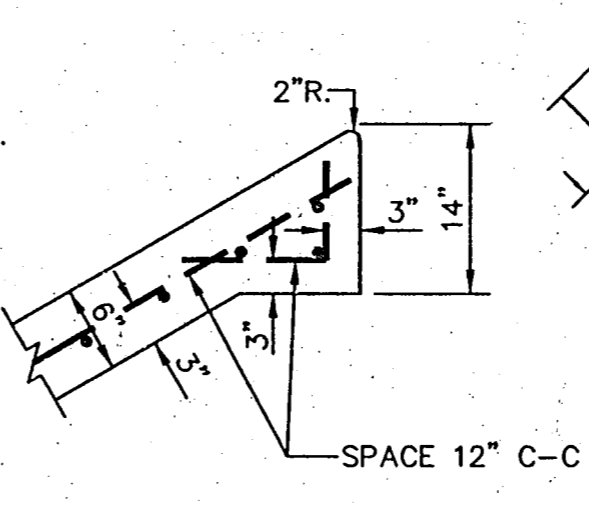
CHANNEL LINING DETAIL
NOT TO SCALE

- NOTES:**
1. PROPOSED CHANNEL LINING SHALL MATCH EXISTING CHANNEL LINING.
 2. DOWEL 18" LONG #3 BARS @ 12" CENTERS FROM CHANNEL LINING 9" INTO PARALLEL BOX CULVERT WINGWALLS (SEE SHEETS SW-2 AND SW-8).

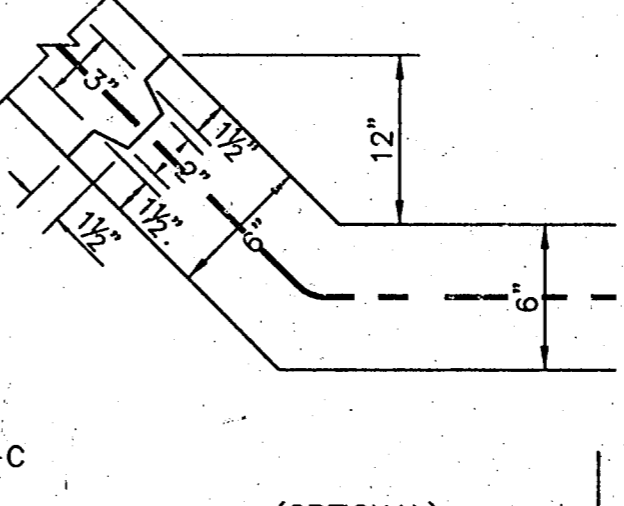
SLEEVE FOR DOWEL SHALL HAVE AN INSIDE DIAMETER OF 7/8" AND SHALL BE 5" LONG.



TRANSVERSE EXPANSION JOINT
NOT TO SCALE

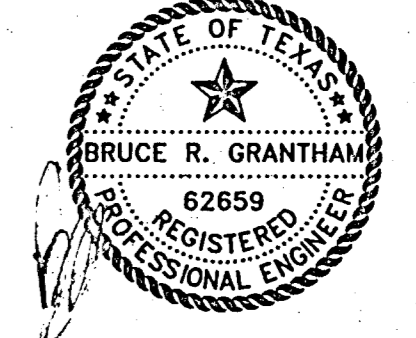


SLAB EDGE - DETAIL "A"
NOT TO SCALE



CONSTRUCTION JOINT
NOT TO SCALE

GENERAL UTILITY NOTE
 RELOCATION OF ELECTRIC, GAS, TELEPHONE, AND CABLE TELEVISION LINES WILL OCCUR AFTER THESE DRAWINGS ARE COMPLETED. CONTRACTOR MUST OBTAIN NEW LOCATIONS OF ALL UTILITIES PRIOR TO STARTING CONSTRUCTION.



THE SEAL APPEARING ON THIS DOCUMENT WAS AUTHORIZED BY BRUCE R. GRANTHAM ON 07/19/02. ALTERATION OF A SEALED DOCUMENT WITHOUT PROPER NOTIFICATION TO THE RESPONSIBLE ENGINEER IS AN OFFENSE UNDER THE TEXAS ENGINEERING PRACTICE ACT.

DATE: DECEMBER, 2001	SCALE: 1"=20'	JOB NO.: 00-249
DRAWN: GBW	DESIGN: JFW	REVIEWED: BRG
DWG: 249STMPLO2.DWG		

ARAPAHO ROAD PHASE II
STORM WATER PLAN -
SHEET 1
TOWN OF ADDISON

Grantham, Burge & Waldbauer
Engineers, Inc.
 1919 S. SHILOH ROAD, SUITE 530, LB. 27 GARLAND, TEXAS 75042
 (972) 840-1916 (TEL)
 (972) 840-2156 (FAX)

SHT. SW-1 OF SW-8