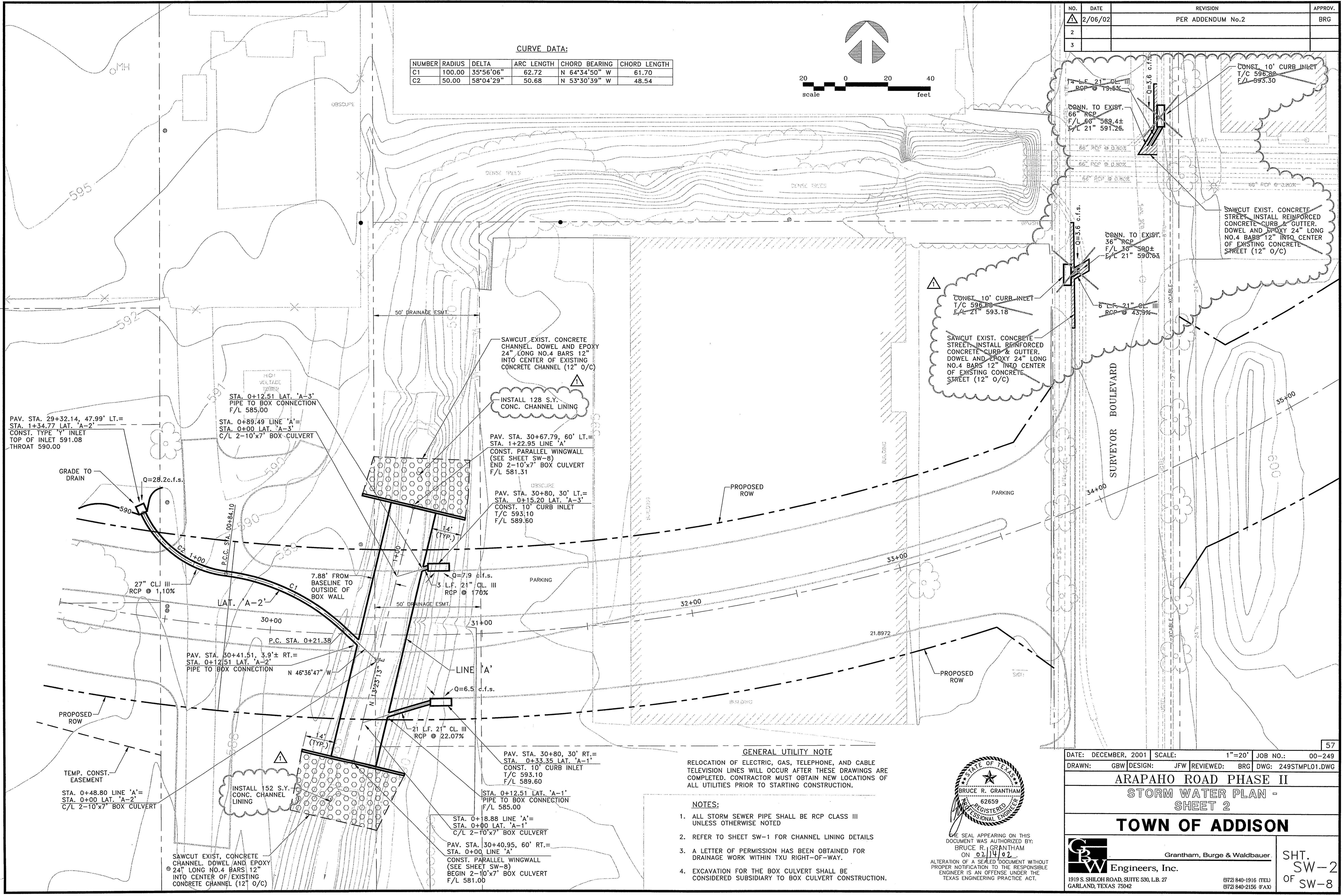
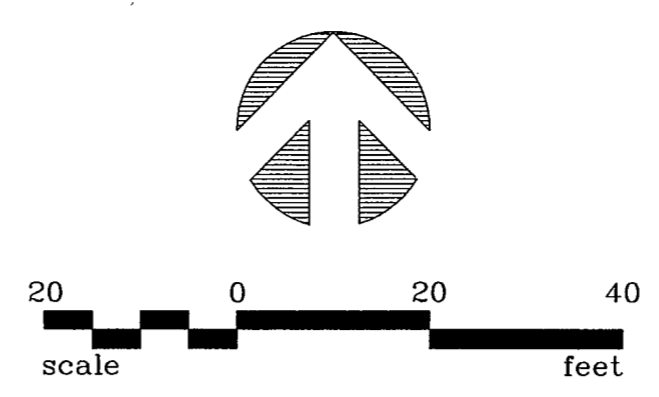


NO.	DATE	REVISION	APPROV.
1	2/06/02	PER ADDENDUM No.2	BRG
2			
3			

CURVE DATA:

NUMBER	RADIUS	DELTA	ARC LENGTH	CHORD BEARING	CHORD LENGTH
C1	100.00	35°56'06"	62.72	N 64°34'50" W	61.70
C2	50.00	58°04'29"	50.68	N 53°30'39" W	48.54



SAWCUT EXIST. CONCRETE CHANNEL DOWEL AND EPOXY 24" LONG NO.4 BARS 12" INTO CENTER OF EXISTING CONCRETE CHANNEL (12" O/C)

INSTALL 128 S.Y. CONC. CHANNEL LINING

PAV. STA. 30+67.79, 60' LT.= STA. 1+22.95 LINE 'A'
CONST. PARALLEL WINGWALL (SEE SHEET SW-8)
END 2-10'x7' BOX CULVERT
F/L 581.31

PAV. STA. 30+80, 30' LT.= STA. 0+15.20 LAT. 'A-3'
CONST. 10' CURB INLET
T/C 593.10
F/L 589.60

PAV. STA. 30+80, 30' RT.= STA. 0+35.35 LAT. 'A-1'
CONST. 10' CURB INLET
T/C 593.10
F/L 589.60

STA. 0+12.51 LAT. 'A-1'
PIPE TO BOX CONNECTION
F/L 585.00

PAV. STA. 30+40.95, 60' RT.= STA. 0+00 LINE 'A'
CONST. PARALLEL WINGWALL (SEE SHEET SW-8)
BEGIN 2-10'x7' BOX CULVERT
F/L 581.00

PAV. STA. 29+32.14, 47.99' LT.= STA. 1+34.77 LAT. 'A-2'
CONST. TYPE 'Y' INLET
TOP OF INLET 591.08
THROAT 590.00

STA. 0+12.51 LAT. 'A-3'
PIPE TO BOX CONNECTION
F/L 585.00

STA. 0+89.49 LINE 'A'
STA. 0+00 LAT. 'A-3'
C/L 2-10'x7' BOX CULVERT

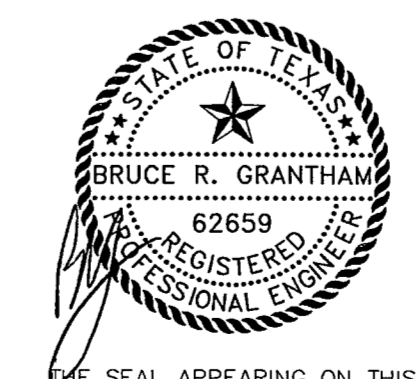
PAV. STA. 50+41.51, 3.9'± RT.= STA. 0+12.51 LAT. 'A-2'
PIPE TO BOX CONNECTION
N 46°36'47" W

INSTALL 152 S.Y. CONC. CHANNEL LINING

SAWCUT EXIST. CONCRETE CHANNEL DOWEL AND EPOXY 24" LONG NO.4 BARS 12" INTO CENTER OF EXISTING CONCRETE CHANNEL (12" O/C)

GENERAL UTILITY NOTE
RELOCATION OF ELECTRIC, GAS, TELEPHONE, AND CABLE TELEVISION LINES WILL OCCUR AFTER THESE DRAWINGS ARE COMPLETED. CONTRACTOR MUST OBTAIN NEW LOCATIONS OF ALL UTILITIES PRIOR TO STARTING CONSTRUCTION.

- NOTES:**
1. ALL STORM SEWER PIPE SHALL BE RCP CLASS III UNLESS OTHERWISE NOTED
 2. REFER TO SHEET SW-1 FOR CHANNEL LINING DETAILS
 3. A LETTER OF PERMISSION HAS BEEN OBTAINED FOR DRAINAGE WORK WITHIN TXU RIGHT-OF-WAY.
 4. EXCAVATION FOR THE BOX CULVERT SHALL BE CONSIDERED SUBSIDIARY TO BOX CULVERT CONSTRUCTION.



THE SEAL APPEARING ON THIS DOCUMENT WAS AUTHORIZED BY:
BRUCE R. GRANTHAM
ON 02/14/02
ALTERATION OF A SEALED DOCUMENT WITHOUT PROPER NOTIFICATION TO THE RESPONSIBLE ENGINEER IS AN OFFENSE UNDER THE TEXAS ENGINEERING PRACTICE ACT.

DATE: DECEMBER, 2001 SCALE: 1"=20' JOB NO.: 00-249
DRAWN: GBW DESIGN: JFW REVIEWED: BRG DWG: 249STMPLO1.DWG

**ARAPAHO ROAD PHASE II
STORM WATER PLAN -
SHEET 2**

TOWN OF ADDISON
Grantham, Burge & Waldbauer
SHT. SW-2 OF SW-8
1919 S. SHILOH ROAD, SUITE 530, L.B. 27 GARLAND, TEXAS 75042 (972) 840-1916 (TEL) (972) 840-2156 (FAX)