

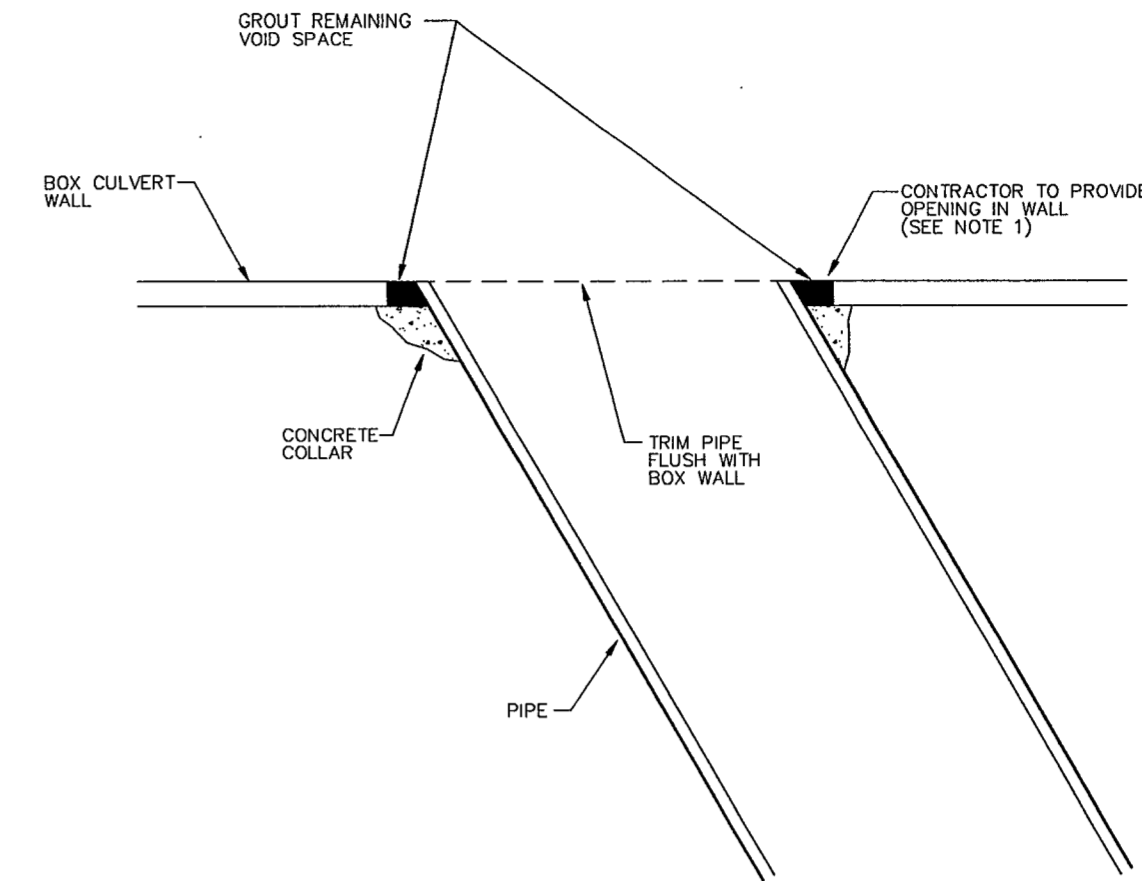
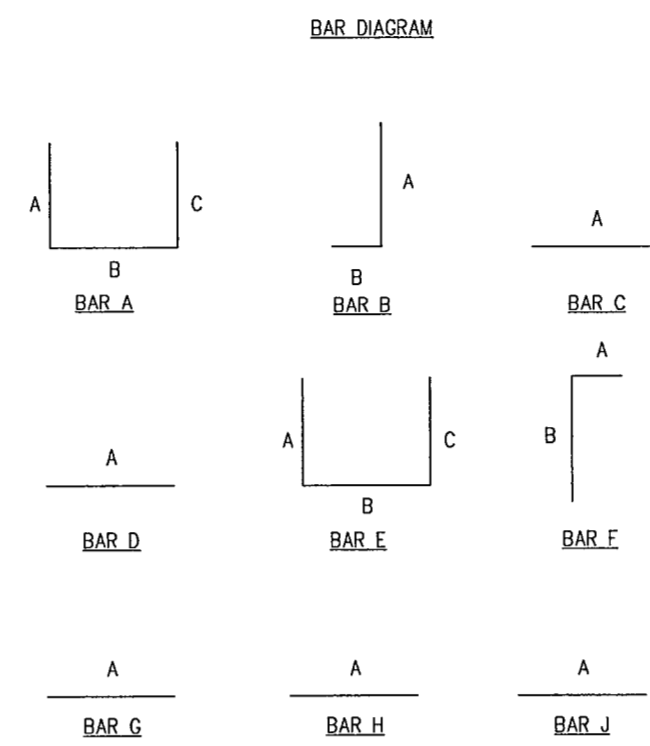
NO.	DATE	REVISION	APPROV.
1			
2			
3			

REINFORCING BAR SCHEDULE							
INLET LENGTH	BAR MARK NUMBER	BAR DIAGRAM TYPE	BAR SIZE	NUMBER REQUIRED	BAR BENDING DIMENSIONS		
					A	B	C
8	A	I	#3	9	3'-2"	6"	--
	B	I	#3	2	6'-8"	6"	--
	C	II	#4	VARIES	8'-8"	6"	--
	D	IV	#3	12	8'-8"	6"	--
	E	IV	#3	7	8'-8"	6"	--
	F	III	#3	2	4'-0"	--	--
	G	V	#4	10	3'-2"	3'-2"	**
	H	III	#4	VARIES	3'-2"	--	--
10	A	I	#3	14	3'-2"	6"	--
	B	I	#3	2	8'-8"	6"	--
	C	II	#4	VARIES	10'-8"	6"	--
	D	IV	#3	6	10'-8"	6"	--
	E	IV	#3	8	10'-8"	6"	--
	F	III	#3	2	4'-0"	--	--
	G	V	#4	12	3'-2"	3'-2"	**
	H	III	#4	VARIES	3'-2"	--	--
12	A	I	#3	10	3'-2"	6"	--
	B	I	#3	2	10'-8"	6"	--
	C	II	#4	VARIES	12'-8"	6"	--
	D	IV	#3	6	12'-8"	6"	--
	E	IV	#3	8	12'-8"	6"	--
	F	III	#3	2	4'-0"	--	--
	G	V	#4	10	3'-2"	3'-2"	**
	H	III	#4	VARIES	3'-2"	--	--
14	A	I	#3	14	3'-2"	6"	--
	B	I	#3	2	12'-8"	6"	--
	C	II	#4	VARIES	14'-8"	6"	--
	D	IV	#3	6	14'-8"	6"	--
	E	IV	#3	8	14'-8"	6"	--
	F	III	#3	2	4'-0"	--	--
	G	V	#4	14	3'-2"	3'-2"	**
	H	III	#4	VARIES	3'-2"	--	--

\* SEE BAR DIAGRAM FOR DIMENSIONS.  
\*\* LENGTH VARIES DUE TO DEPTH OF INLET.

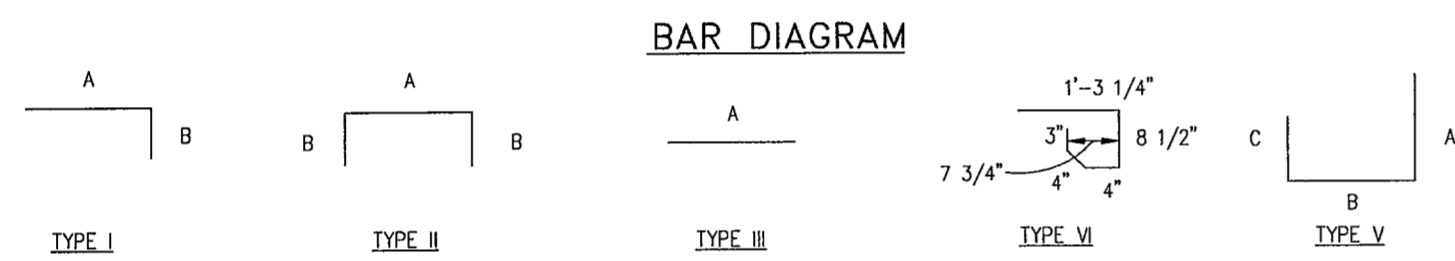
REINFORCING BAR SCHEDULE					
BAR	NO. REQ'D	BAR SIZE	BAR BENDING DIMENSIONS		
			A	B	C
A	4	#4	VARIES	3'-0"	VARIES
B	4	#4	3'-0"	VARIES	--
C	2	#4	VARIES	--	--
D	VARIES	#4	3'-0"	3'-0"	3'-0"
E	4	#4	1'-0"	2'-0"	--
G	8	#4	3'-2"	--	--
H	4	#4	2'-1"	--	--
J	4	#4	3'-2"	--	--

NOTE:  
BARS "A" & "E" ARE USED IN THE WALLS PARALLEL TO THE R.C.P.  
BARS "B" ARE IN THE WALL OPPOSITE THE R.C.P.

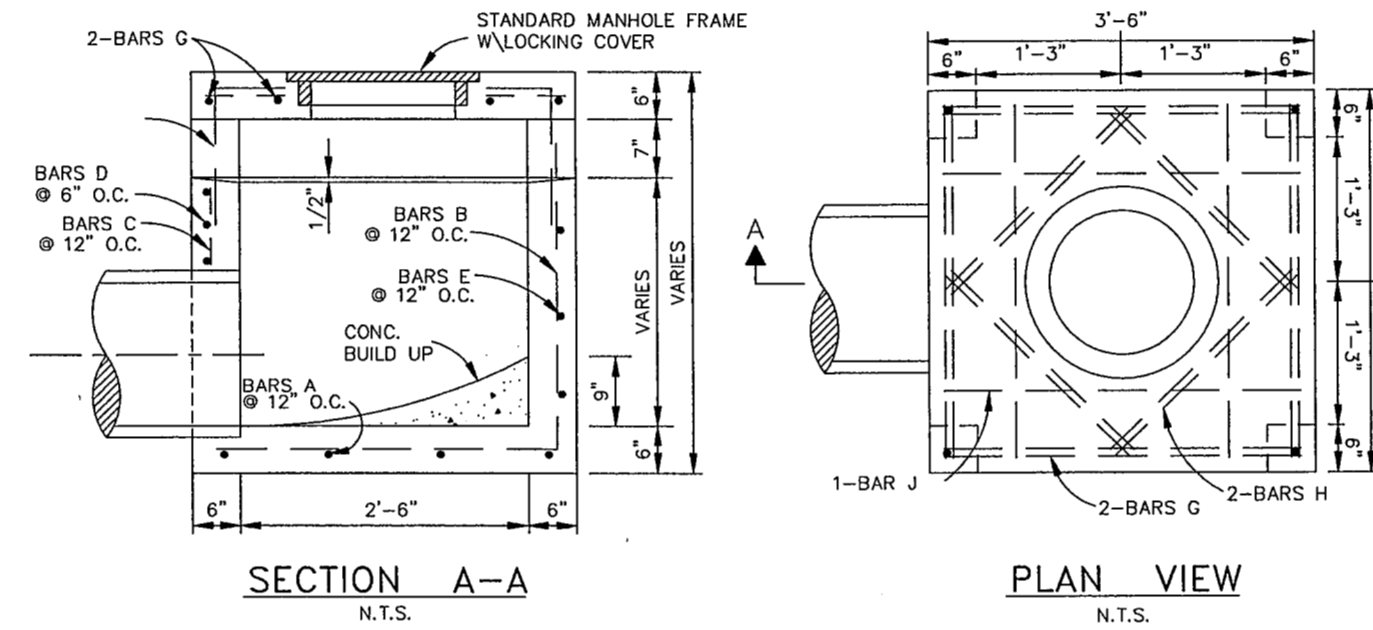


NOTE:  
1. IF CAST-IN-PLACE BOX IS USED, CONTRACTOR TO SET PIPE IN WALL FORMS PRIOR TO PLACEMENT OF CONCRETE.  
2. CONCRETE COLLAR AROUND PIPE AT WALL CONNECTION

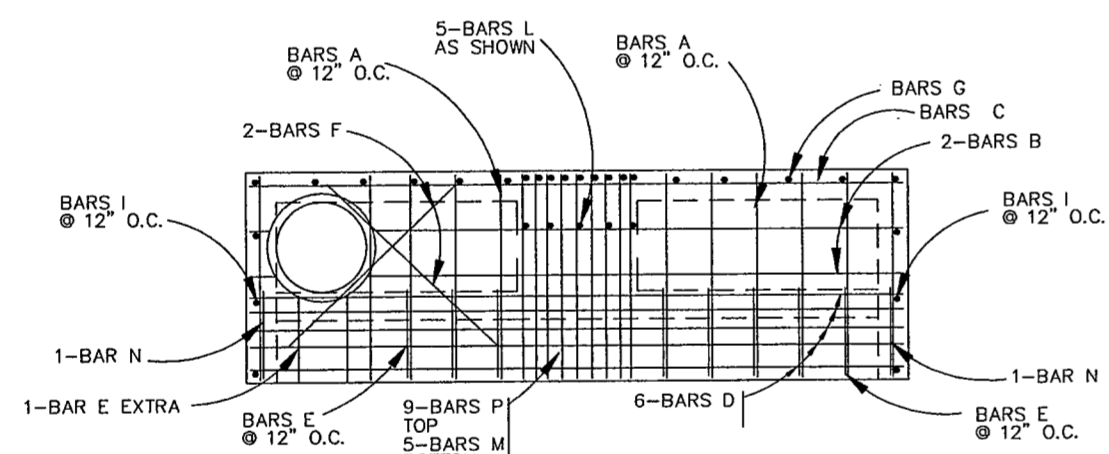
PIPE TO BOX CONNECTION  
N.T.S.



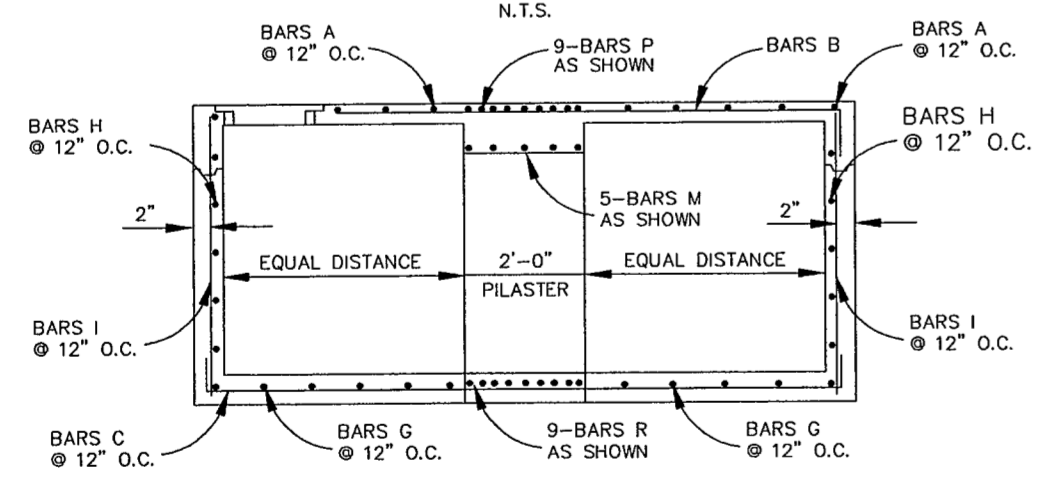
BAR DIAGRAM



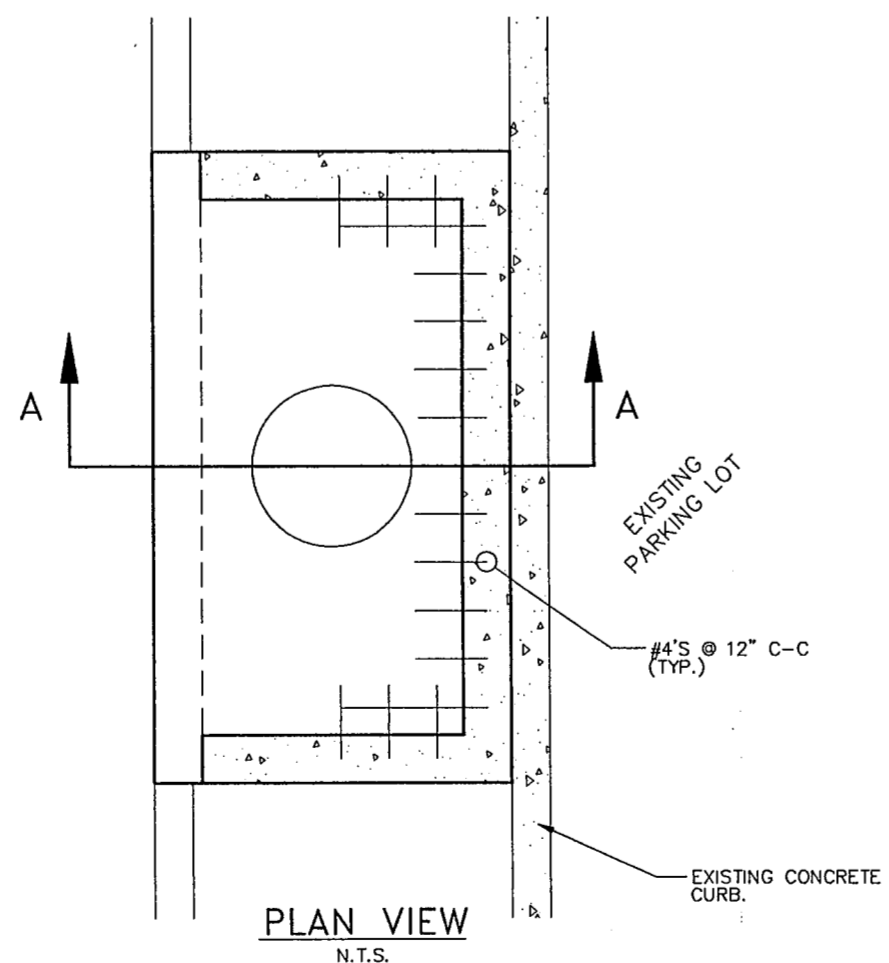
"Y" TYPE INLET DETAILS  
N.T.S.



PLAN VIEW (12 AND 14 FOOT INLET)  
N.T.S.

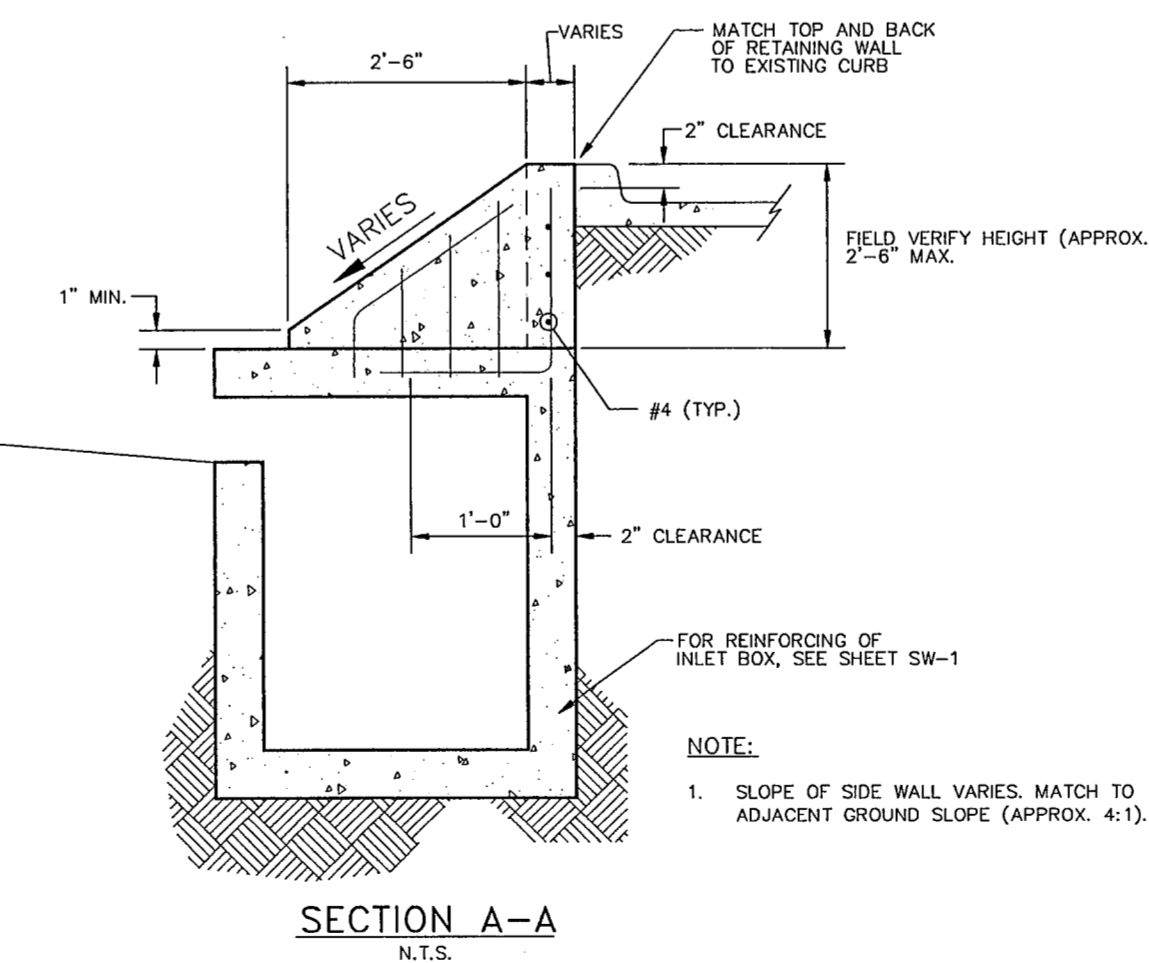


SECTION A-A  
N.T.S.



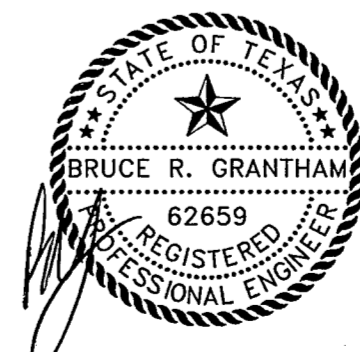
PLAN VIEW  
N.T.S.

RETAINING WALL DETAIL FOR INLET @ PAV. STA. 15+20±

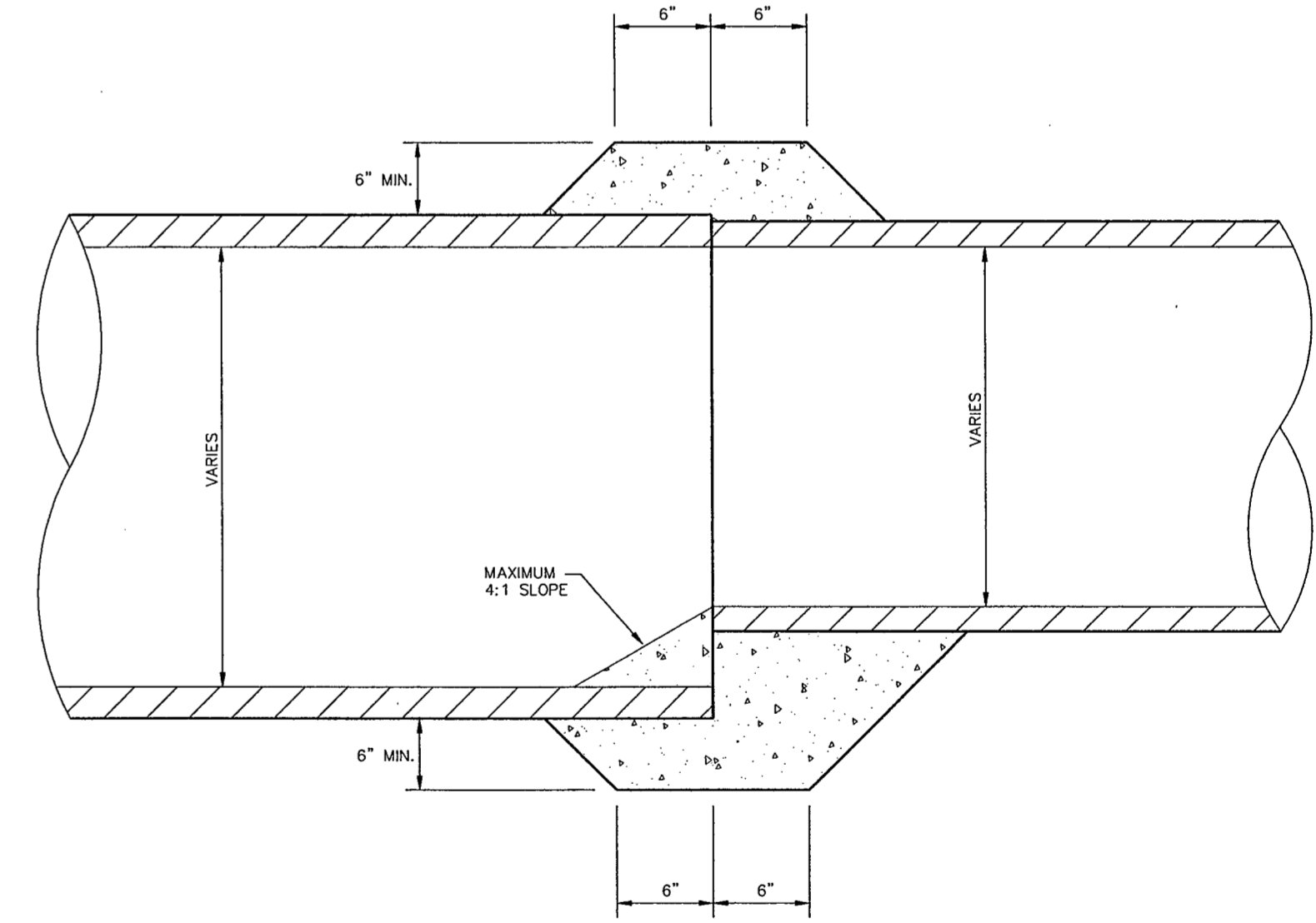


SECTION A-A  
N.T.S.

NOTE:  
1. SLOPE OF SIDE WALL VARIES. MATCH TO ADJACENT GROUND SLOPE (APPROX. 4:1).



THE SEAL APPEARING ON THIS DOCUMENT WAS AUTHORIZED BY: BRUCE R. GRANTHAM ON 02/14/02 ALTERATION OF A SEALED DOCUMENT WITHOUT PROPER NOTIFICATION TO THE RESPONSIBLE ENGINEER IS AN OFFENSE UNDER THE TEXAS ENGINEERING PRACTICE ACT.



DETAIL OF CONCRETE COLLAR FOR END TO END EXTENSIONS  
N.T.S.

DATE: DECEMBER, 2001	SCALE: NOT TO SCALE	JOB NO.: 00-249
DRAWN: GBW	DESIGN: BRG	REVIEWED: JFW
DWG: 249DETAILS		

ARAPAHO ROAD PHASE II  
STANDARD CONSTRUCTION DETAILS  
DRAINAGE - SHEET 2 OF 2

TOWN OF ADDISON

Grantham, Burge & Waldbauer  
Engineers, Inc.  
1919 S. SHILOH ROAD, SUITE 530, L.B. 27 GARLAND, TEXAS 75042  
(972) 840-1916 (TEL)  
(972) 840-2156 (FAX)

SHT. SW-6  
OF SW-8